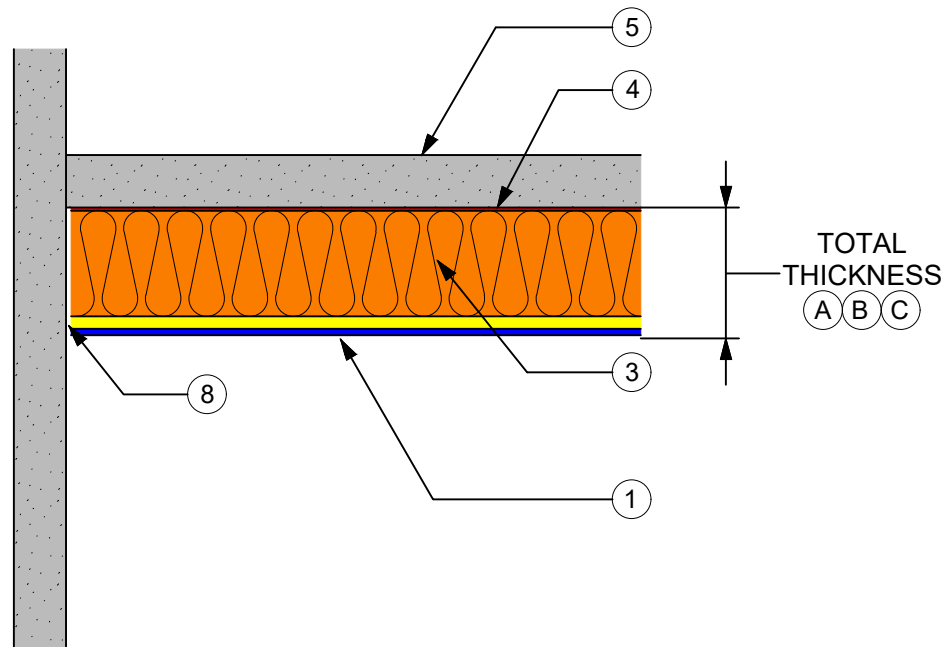


BASWA Phon Base Finish

CEILING TO WALL TRANSITION DETAIL #2

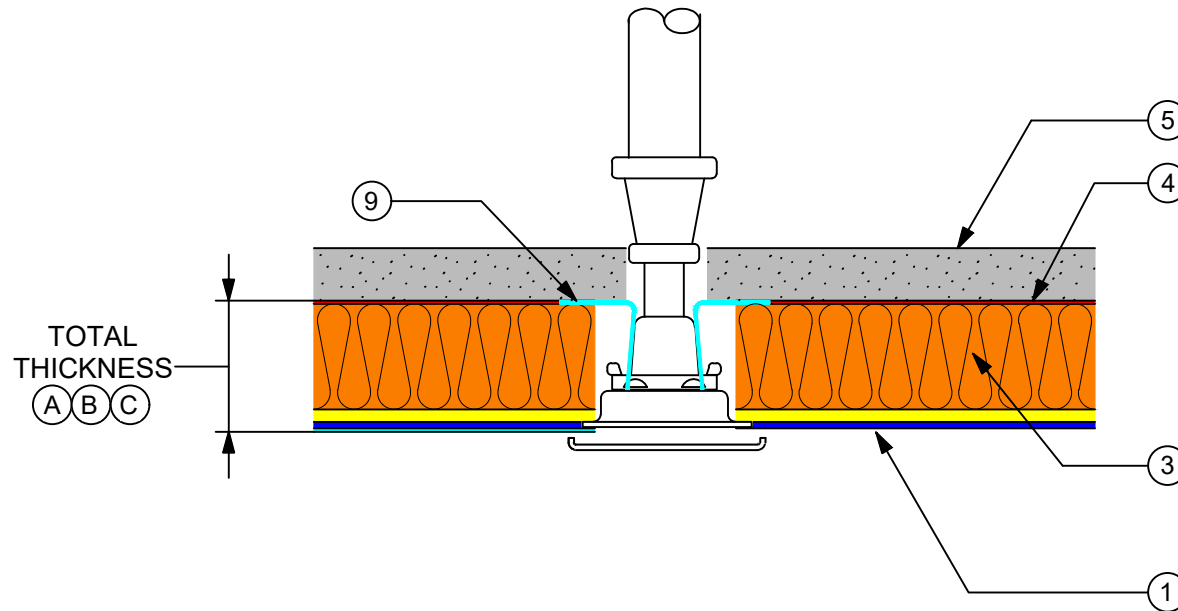


- 1 BASWA Base
Base coat gauged using 6mm notched trowel (a050)
- 3 BASWA Pre-Coated Supporting Panel
- 4 BASWA Adhesive
- 5 Stable Substrate
- 8 1/8" Swedish Cut

| DIMENSIONS | | | |
|-----------------|-------------------|-------------------|------------------|
| SYSTEM | (A) | (B) | (C) |
| TOTAL THICKNESS | 1 3/16" (30MM) | 1 9/16" (40MM) | 2 3/4" (70MM) |

BASWA Phon Base Finish

FIRE SPRINKLER HEAD DETAIL #3

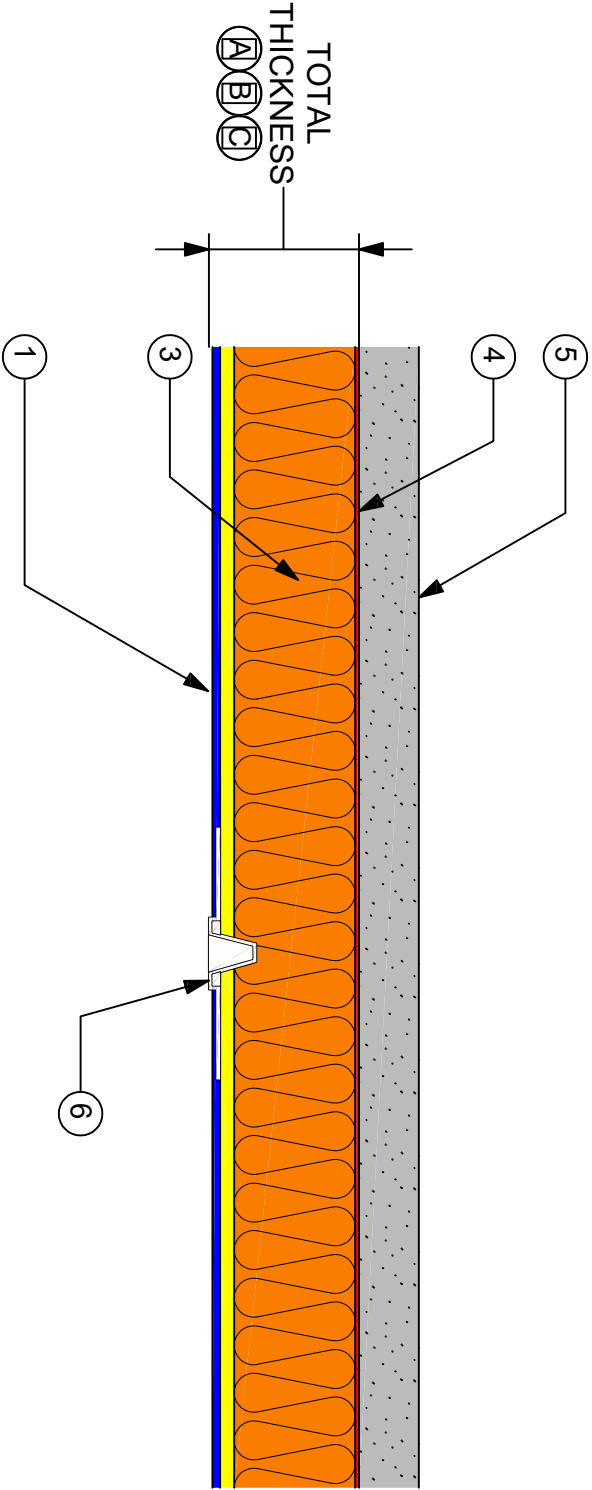


- 1 BASWA Base
Base coat gauged using 6mm notched trowel (a050)
- 3 BASWA Pre-Coated Supporting Panel
- 4 BASWA Adhesive
- 5 Stable Substrate
- 9 Adhesive Tape (to prevent air filtration)

| DIMENSIONS | | | |
|---|-------------------|-------------------|------------------|
| SYSTEM | (A) | (B) | (C) |
| TOTAL THICKNESS | 1 3/16" (30MM) | 1 9/16" (40MM) | 2 3/4" (70MM) |
| FIXTURE ROUGH-IN BELOW FACE OF SUBSTRATE | 1" | 1 3/8" | 2 9/16" |

BASWA Phon Base Finish

EXPANSION JOINT DETAIL #4



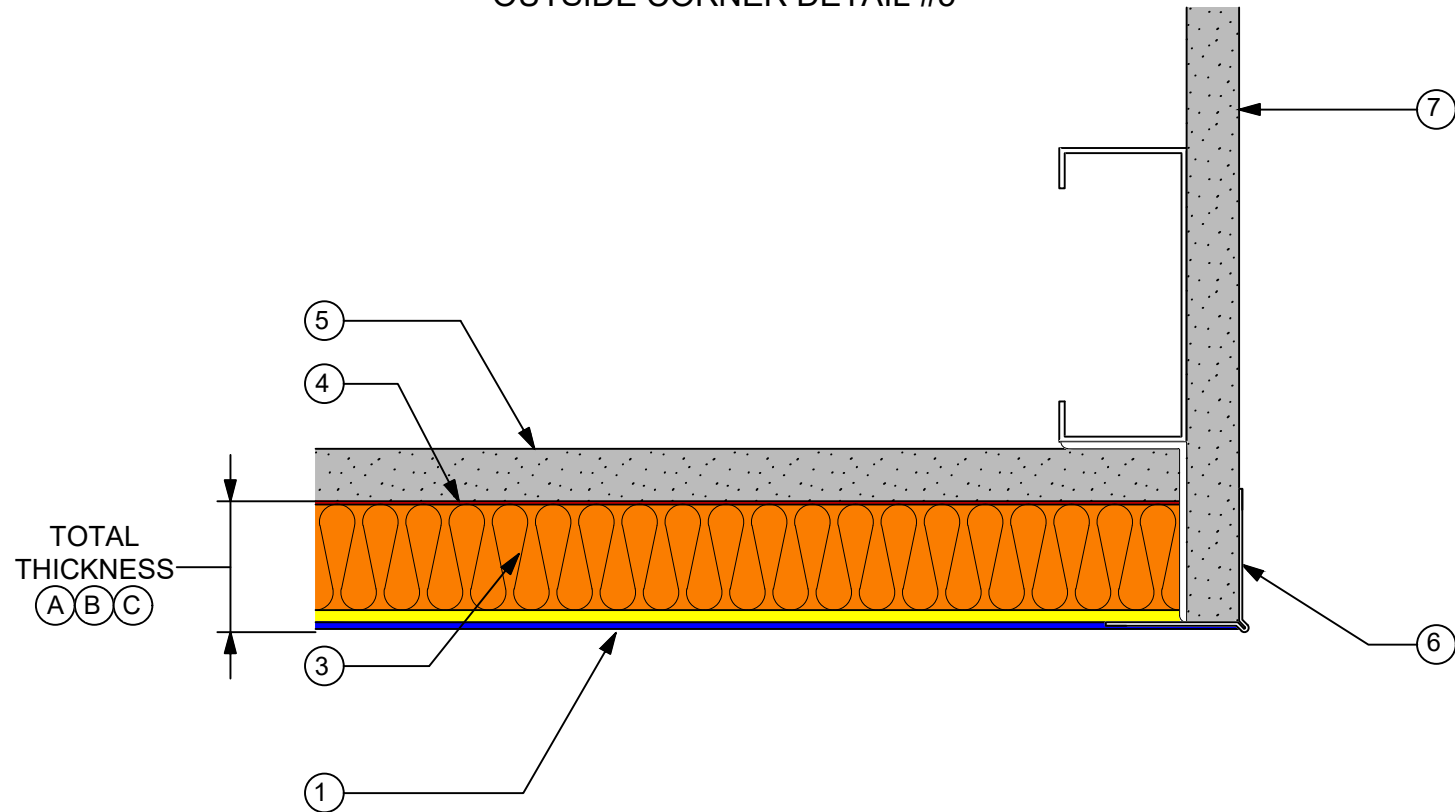
- 1 BASWA Base
Base coat gauged using 6mm notched trowel (a050)
- 3 BASWA Pre-Coated Supporting Panel
- 4 BASWA Adhesive
- 5 Stable Substrate
- 6 Vinyl Trim BAS 093V Expansion Joint*

| DIMENSIONS | | | |
|-----------------|----------------|----------------|---------------|
| SYSTEM | A | B | C |
| TOTAL THICKNESS | 1 3/16" (30MM) | 1 9/16" (40MM) | 2 3/4" (70MM) |

*All Vinyl Trims Applied with BAS 847 Spray Adhesive

BASWA Phon Base Finish

OUTSIDE CORNER DETAIL #5



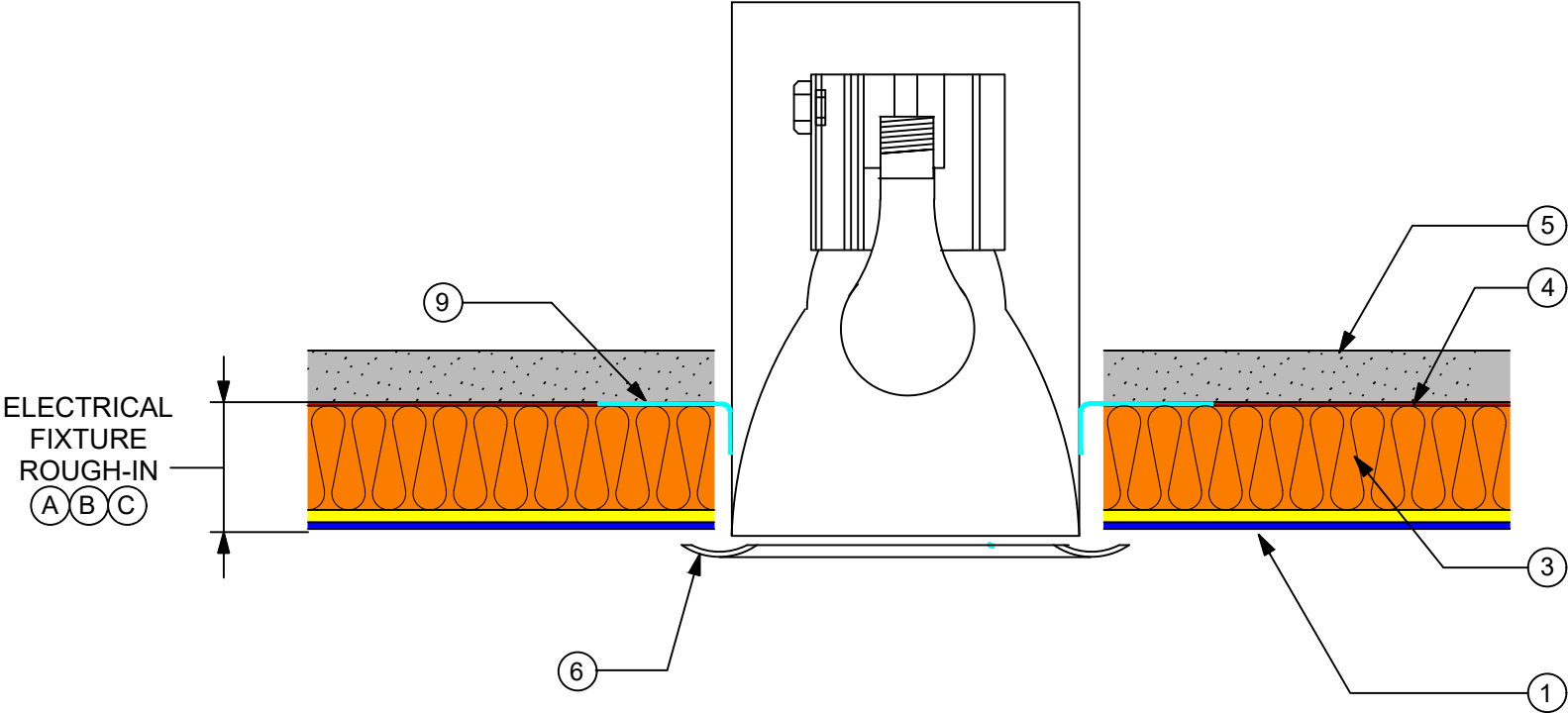
- 1 BASWA Base
Base coat gauged using 6mm notched trowel (a050)
- 3 BASWA Pre-Coated Supporting Panel
- 4 BASWA Adhesive
- 5 Stable Substrate
- 6 Vinyl Trim BAS S010 Corner Bead*
- 7 Drywall Finished and Painted

| DIMENSIONS | | | |
|--|-------------------|-------------------|------------------|
| SYSTEM | (A) | (B) | (C) |
| TOTAL THICKNESS | 1 3/16" (30MM) | 1 9/16" (40MM) | 2 3/4" (70MM) |
| DRYWALL OVERHANG BELOW FACE OF SUBSTRATE | 1" | 1 3/8" | 2 9/16" |

*All Vinyl Trims Applied with BAS 847 Spray Adhesive

BASWA Phon Base Finish

RECESSED LIGHT DETAIL #6

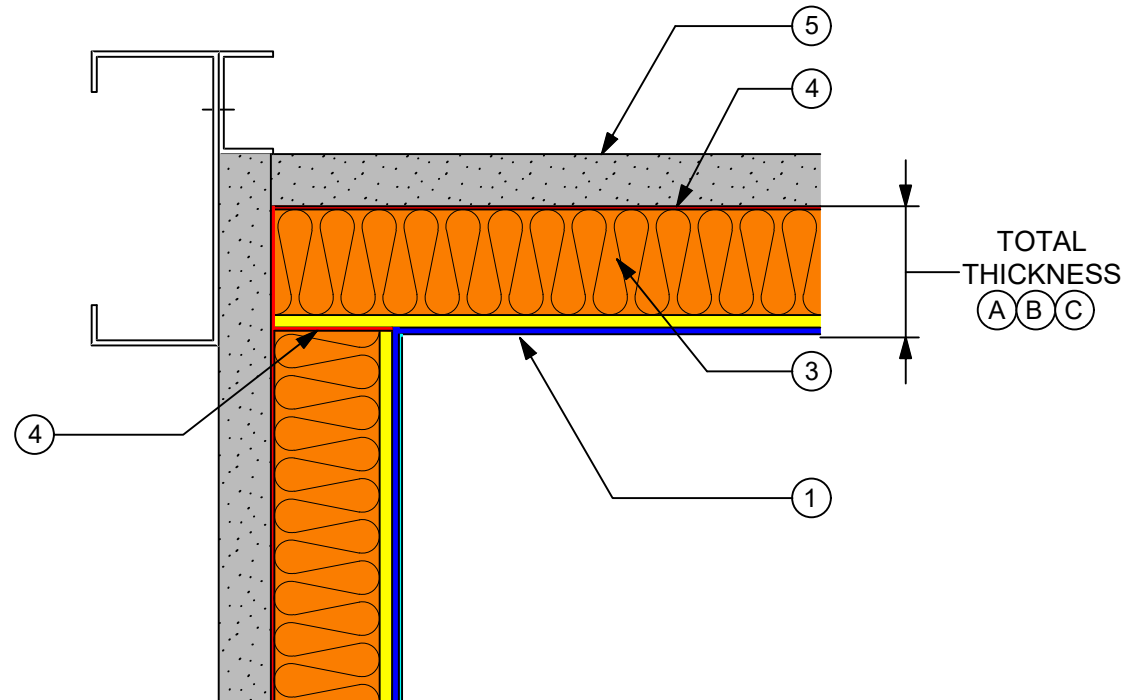


- 1 BASWA Base
Base coat gauged using 6mm notched trowel (a050)
- 3 BASWA Pre-Coated Supporting Panel
- 4 BASWA Adhesive
- 5 Stable Substrate
- 6 Surface Mounted Trim Piece
- 9 Adhesive Tape (to prevent air filtration)

| DIMENSIONS | | | |
|--|-------------------|-------------------|------------------|
| SYSTEM | A | B | C |
| TOTAL THICKNESS | 1 3/16" (30MM) | 1 9/16" (40MM) | 2 3/4" (70MM) |
| FIXTURE ROUGH IN BELOW FACE OF SUBSTRATE | 1" | 1 3/8" | 2 9/16" |

BASWA Phon

INSIDE CORNER DETAIL: BASWA Phon to BASWA Phon DETAIL #7

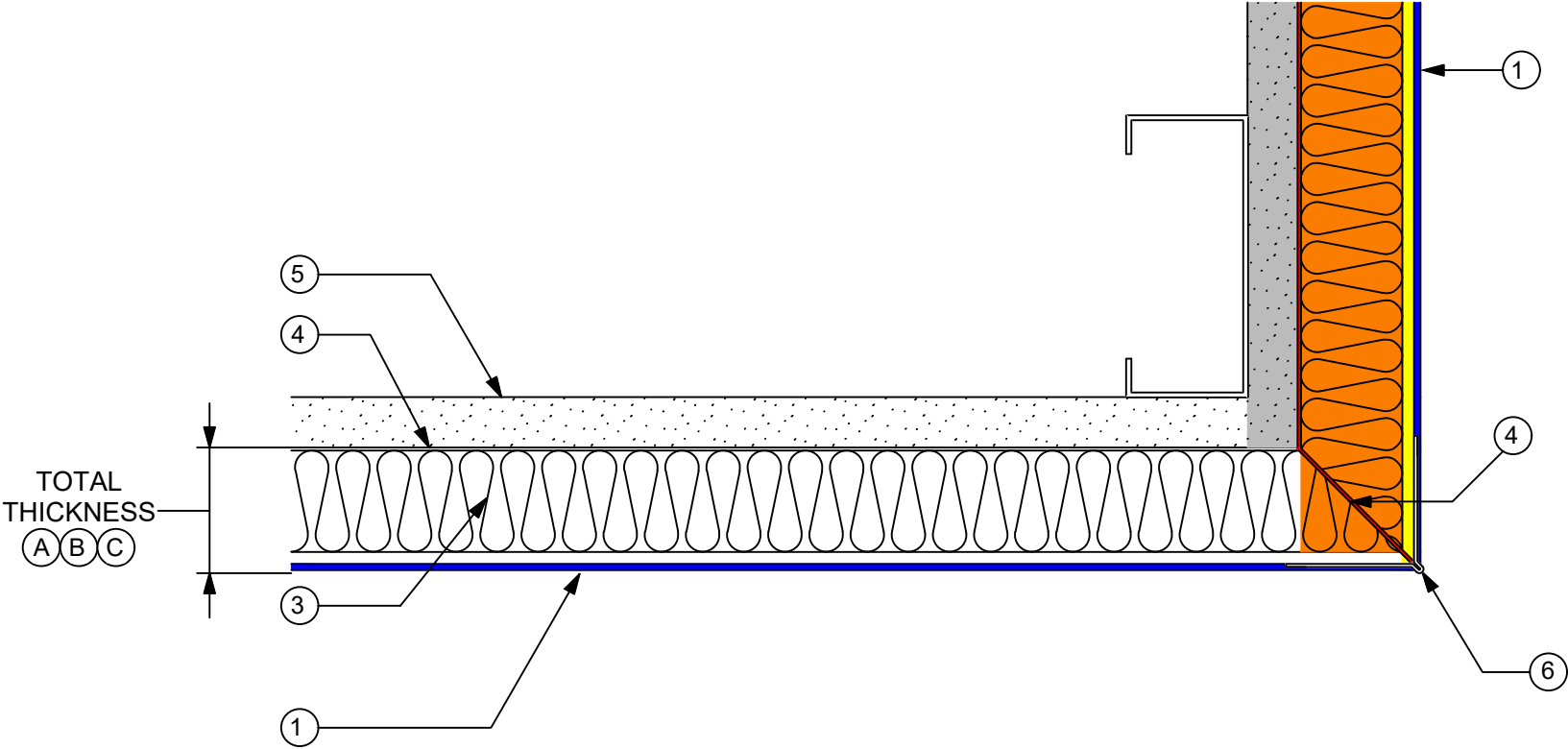


- 1 BASWA Base
Base coat gauged using 6mm notched trowel (a050)
- 3 BASWA Pre-Coated Supporting Panel
- 4 BASWA Adhesive
- 5 Stable Substrate

| DIMENSIONS | | | |
|-----------------|-------------------|-------------------|------------------|
| SYSTEM | A | B | C |
| TOTAL THICKNESS | 1 3/16" (30MM) | 1 9/16" (40MM) | 2 3/4" (70MM) |

BASWA Phon Base Finish

OUTSIDE CORNER DETAIL: BASWA Phon to BASWA Phon DETAIL #8

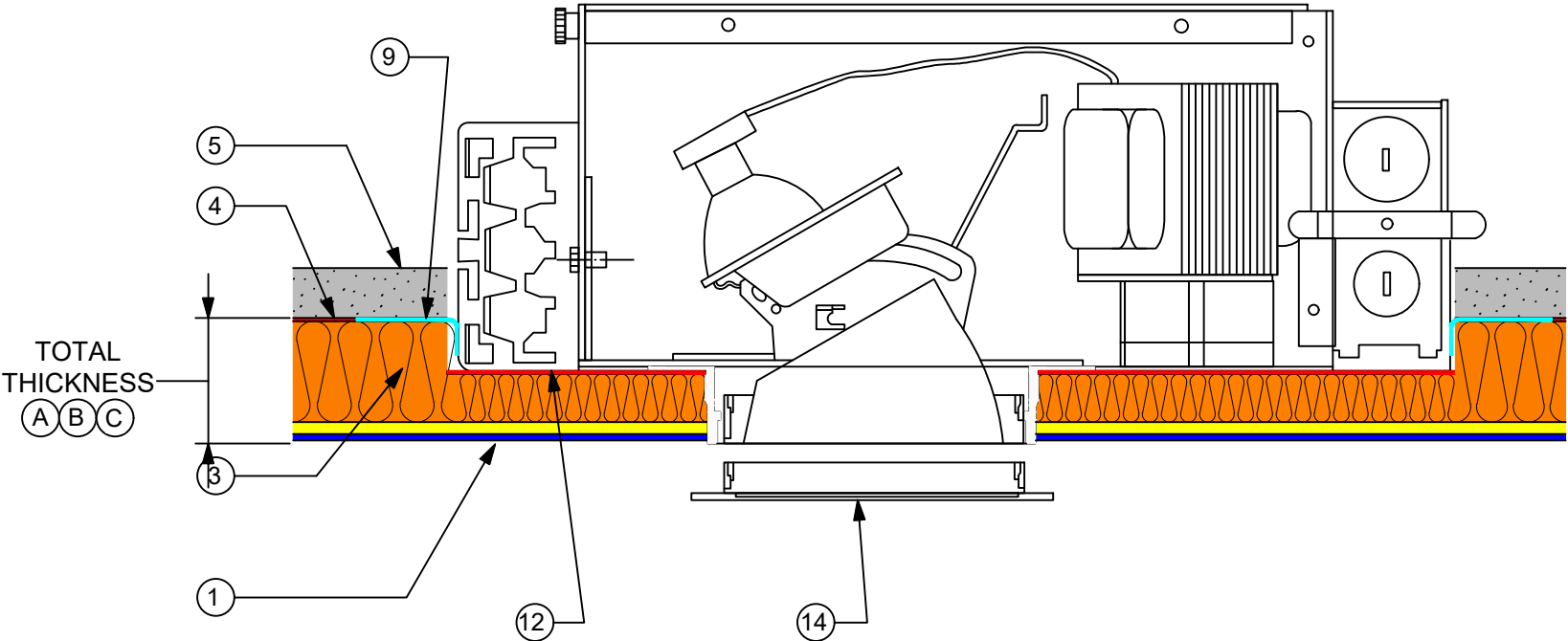


| DIMENSIONS | | | |
|-----------------|-------------------|-------------------|------------------|
| SYSTEM | A | B | C |
| TOTAL THICKNESS | 1 3/16" (30MM) | 1 9/16" (40MM) | 2 3/4" (70MM) |

*All Vinyl Trims Applied with BAS 847 Spray Adhesive

BASWA Phon Base Finish

RECESSED LIGHT FIXTURE DETAIL #11

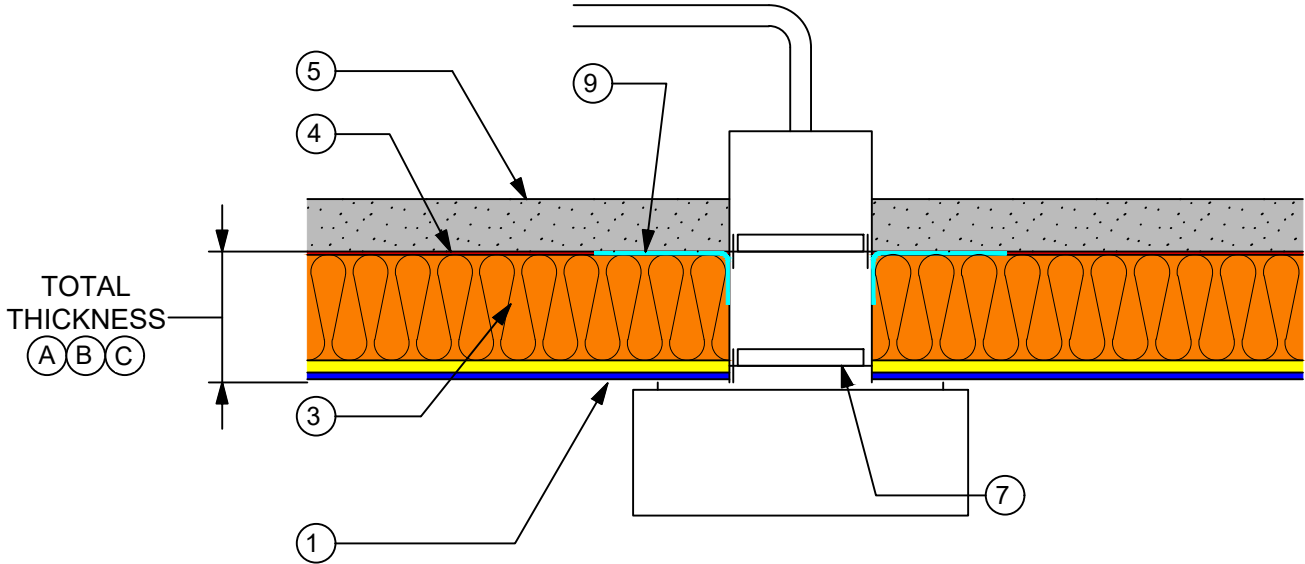


- 1 BASWA Base
Base coat gauged using 6mm notched trowel (a050)
- 3 BASWA Pre-Coated Supporting Panel
- 4 BASWA Adhesive
- 5 Stable Substrate
- 9 Adhesive Tape (to prevent air filtration)
- 12 Cut Out Back of Panel
- 14 Surface Mounted Trim Piece

| DIMENSIONS | | | |
|--|----------------|----------------|---------------|
| SYSTEM | A | B | C |
| TOTAL THICKNESS | 1 3/16" (30MM) | 1 9/16" (40MM) | 2 3/4" (70MM) |
| FIXTURE ROUGH IN BELOW FACE OF SUBSTRATE | 1" | 1 3/8" | 2 9/16" |

BASWA Phon Base Finish

CEILING MOUNTED FIXTURE #12

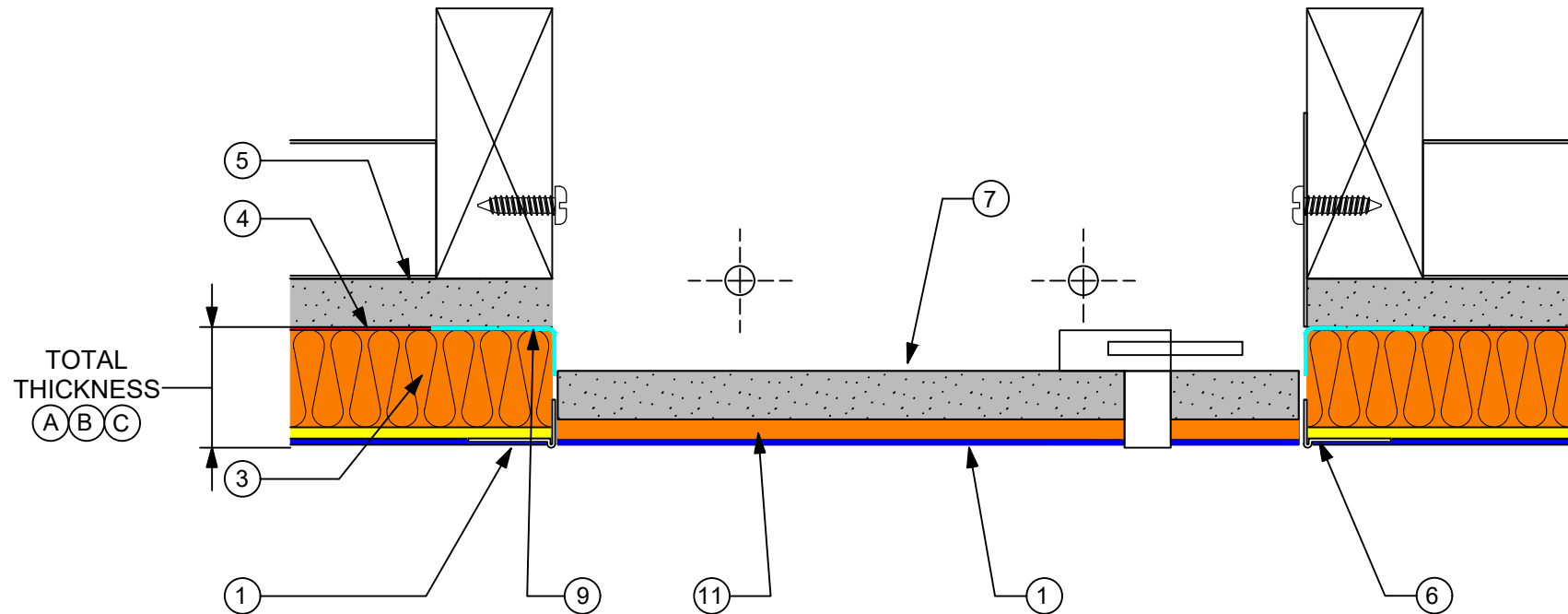


- 1 BASWA Base
Base coat gauged using 6mm notched trowel (a050)
- 3 BASWA Pre-Coated Supporting Panel
- 4 BASWA Adhesive
- 5 Stable Substrate
- 7 Electrical Junction Box Extension
- 9 Adhesive Tape (to prevent air infiltration)

| DIMENSIONS | | | |
|--|----------------|----------------|---------------|
| SYSTEM | (A) | (B) | (C) |
| TOTAL THICKNESS | 1 3/16" (30MM) | 1 9/16" (40MM) | 2 3/4" (70MM) |
| FIXTURE ROUGH IN BELOW FACE OF SUBSTRATE | 1" | 1 3/8" | 2 9/16" |

BASWA Phon Base Finish

ACCESS PANEL DETAIL #15



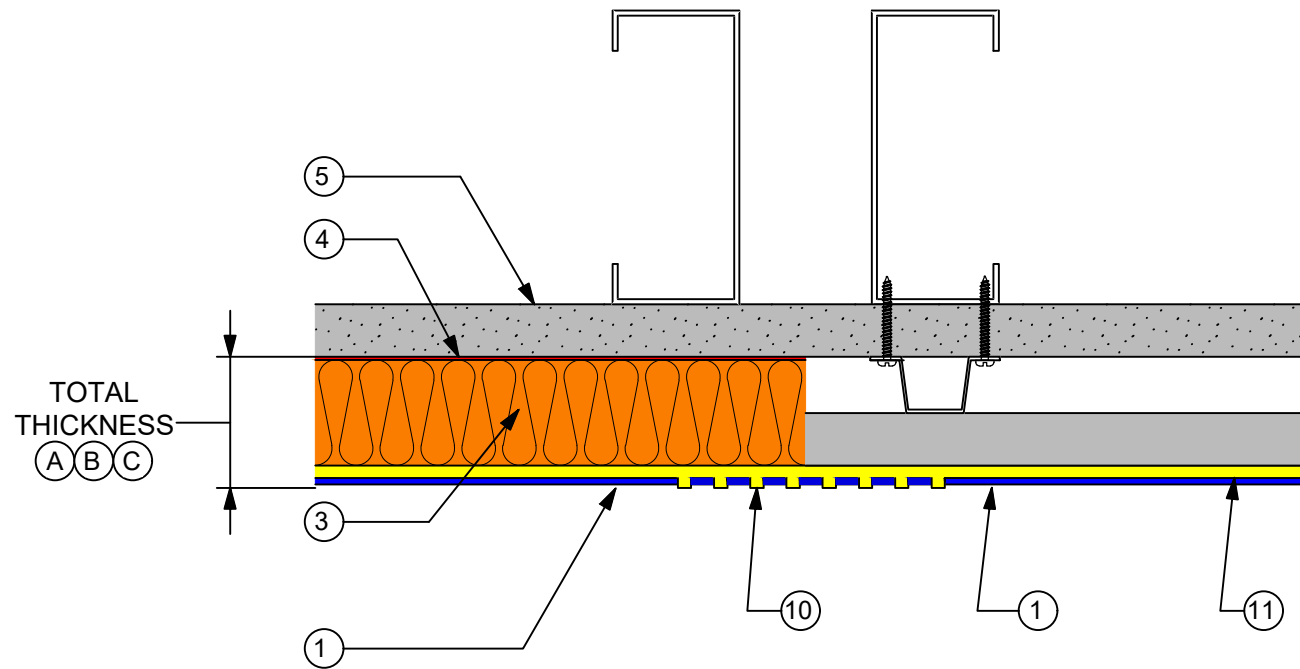
- 1 BASWA Base
Base coat gauged using 6mm notched trowel (a050)
- 3 BASWA Pre-Coated Supporting Panel
- 4 BASWA Adhesive
- 5 Stable Substrate
- 6 Vinyl Trim BAS 3310 5/8 " L Bead*
- 7 5/8" Drywall
- 9 Adhesive Tape (to prevent air infiltration)
- 11 BASWA Fill
- 14 Access Door (Acudor AT-5020)

| DIMENSIONS | | | |
|--|-------------------|-------------------|------------------|
| SYSTEM | (A) | (B) | (C) |
| TOTAL THICKNESS | 1 3/16" (30MM) | 1 9/16" (40MM) | 2 3/4" (70MM) |
| ACCESS PANEL ROUGH IN BELOW FACE OF SUBSTRATE | 1 3/16" | 1 9/16" | 2 3/4" |

*All Vinyl Trims Applied with BAS 847 Spray Adhesive

BASWA Phon Base Finish

BASWA Phon DRYWALL TRANSITION DETAIL #21



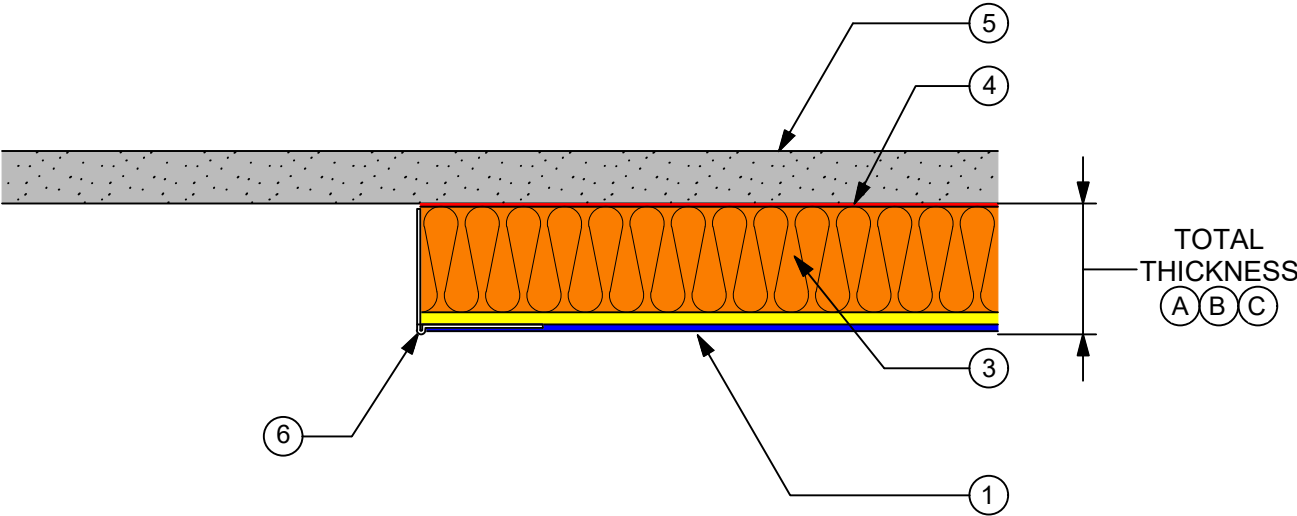
- 1 BASWA Base
Base coat gauged using 6mm notched trowel (a050)
- 3 BASWA Pre-Coated Supporting Panel
- 4 BASWA Adhesive
- 5 Stable Substrate
- 10 Fiberglass Mesh Tape**
- 11 BASWA Fill

| DIMENSIONS | | | |
|-----------------|-------------------|-------------------|------------------|
| SYSTEM | A | B | C |
| TOTAL THICKNESS | 1 3/16" (30MM) | 1 9/16" (40MM) | 2 3/4" (70MM) |

**Mesh Tape Applied with 3M High Strength Adhesive

BASWA Phon Base Finish

TERMINATION (L-BEAD) DETAIL #25



- 1 BASWA Base
Base coat gauged using 6mm notched trowel (a050)
- 3 BASWA Pre-Coated Supporting Panel
- 4 BASWA Adhesive
- 5 Stable Substrate
- 6 Vinyl Trim BASWA

| DIMENSIONS | | | |
|-------------------|----------------|----------------|---------------|
| SYSTEM | A | B | C |
| TOTAL THICKNESS | 1 3/16" (30MM) | 1 9/16" (40MM) | 2 3/4" (70MM) |
| BASWA TRIM TO USE | BAS 3510 | BAS 3650 | BAS 3710 |

*All Vinyl Trims Applied with BAS 847 Spray Adhesive