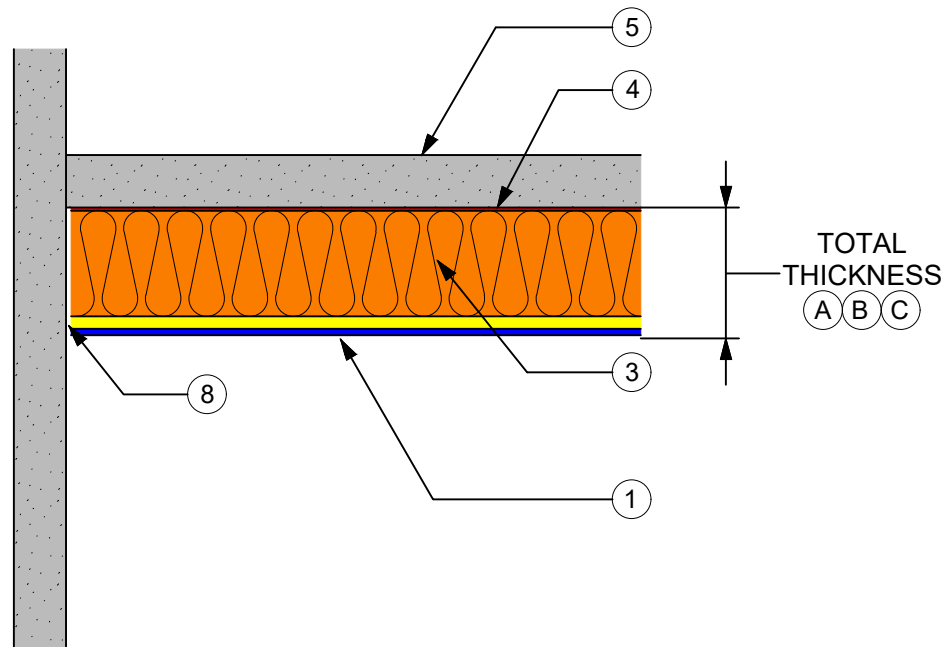


BASWA Phon Fine Finish

CEILING TO WALL TRANSITION DETAIL #2

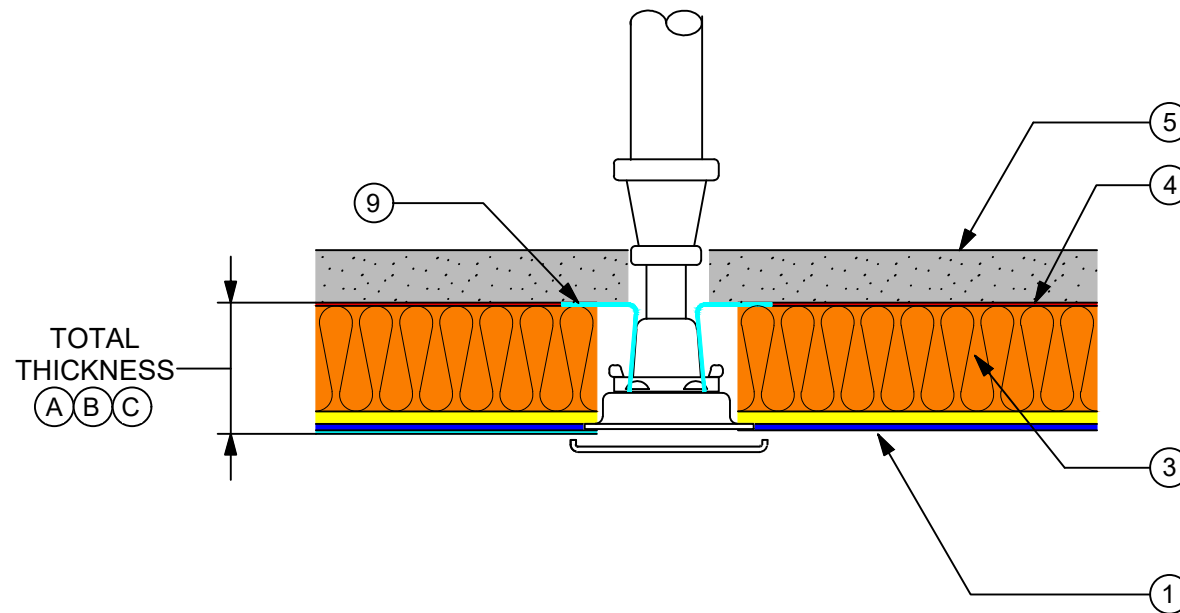


- 1 BASWA Fine Finish Coat
Fine coat gauged using 6mm notched trowel (a050)
- 3 BASWA Pre-Coated Supporting Panel
- 4 BASWA Adhesive
- 5 Stable Substrate
- 8 1/8" Swedish Cut

DIMENSIONS			
SYSTEM	(A)	(B)	(C)
TOTAL THICKNESS	1 3/16" (30MM)	1 9/16" (40MM)	2 3/4" (70MM)

BASWA Phon Fine Finish

FIRE SPRINKLER HEAD DETAIL #3

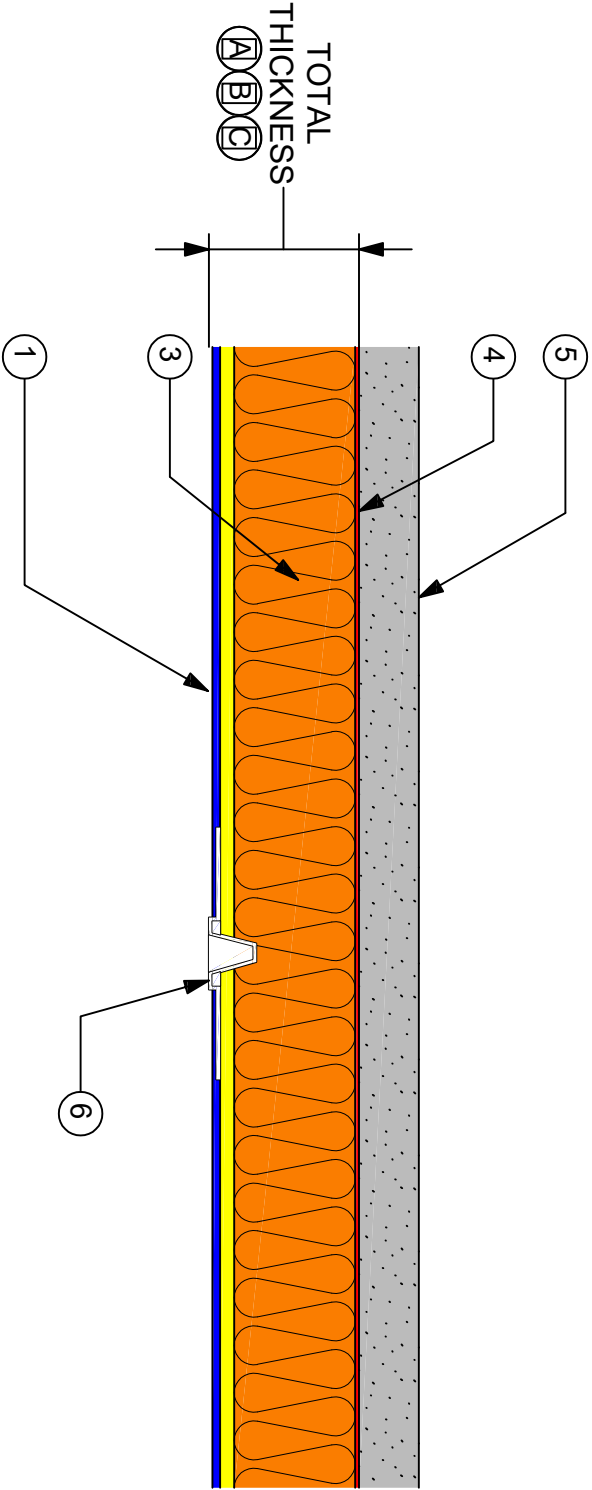


- 1 BASWA Fine Finish Coat
Fine coat gauged using 6mm notched trowel (a050)
- 3 BASWA Pre-Coated Supporting Panel
- 4 BASWA Adhesive
- 5 Stable Substrate
- 9 Adhesive Tape (to prevent air filtration)

DIMENSIONS			
SYSTEM	(A)	(B)	(C)
TOTAL THICKNESS	1 3/16" (30MM)	1 9/16" (40MM)	2 3/4" (70MM)
FIXTURE ROUGH-IN BELOW FACE OF SUBSTRATE	1"	1 3/8"	2 9/16"

BASWA Phon Fine Finish

EXPANSION JOINT DETAIL #4



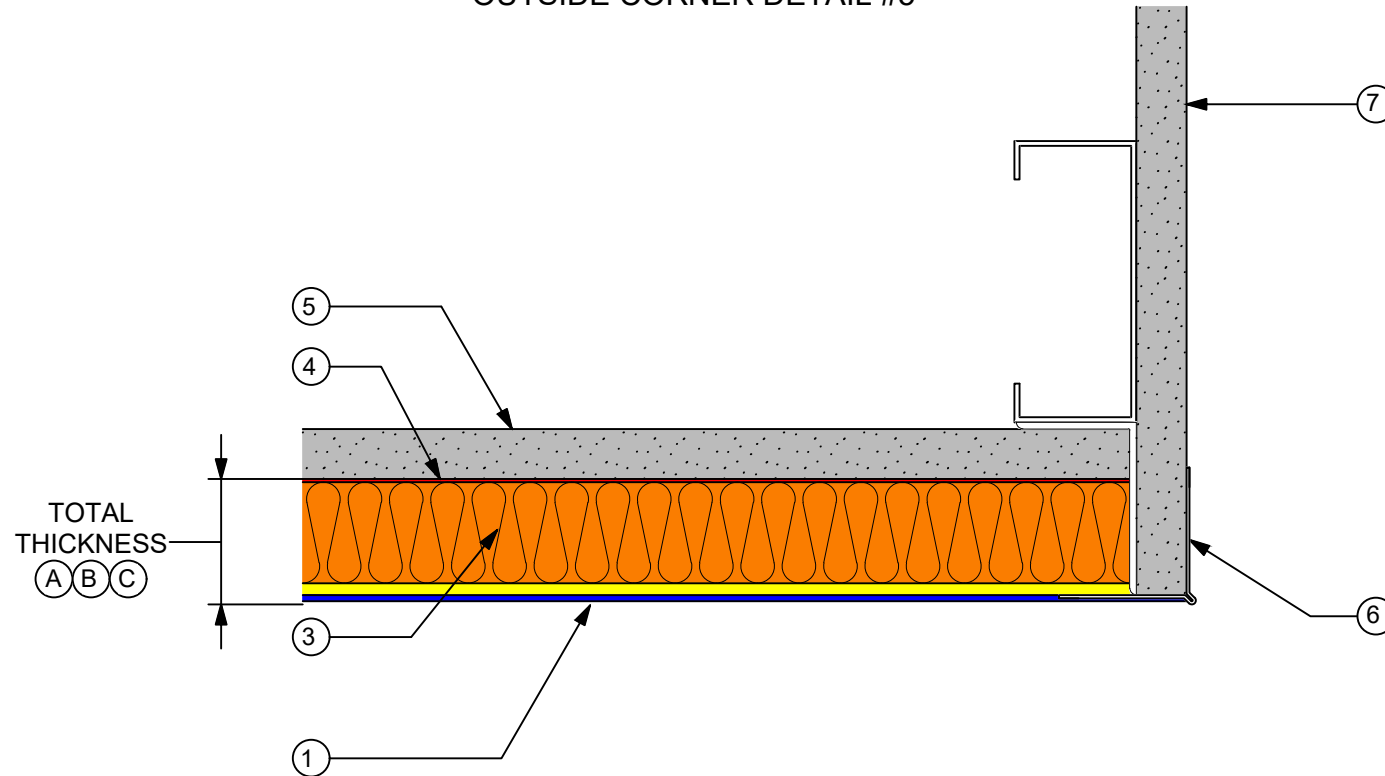
- 1 BASWA Fine Finish Coat
- Fine coat gauged using 6mm notched trowel (a050)
- 3 BASWA Pre-Coated Supporting Panel
- 4 BASWA Adhesive
- 5 Stable Substrate
- 6 Vinyl Trim BAS 093V Expansion Joint*

DIMENSIONS			
SYSTEM	A	B	C
TOTAL THICKNESS	1 3/16" (30MM)	1 9/16" (40MM)	2 3/4" (70MM)

*All Vinyl Trims Applied with Trim Tex 847 Spray Adhesive

BASWA Phon Fine Finish

OUTSIDE CORNER DETAIL #5



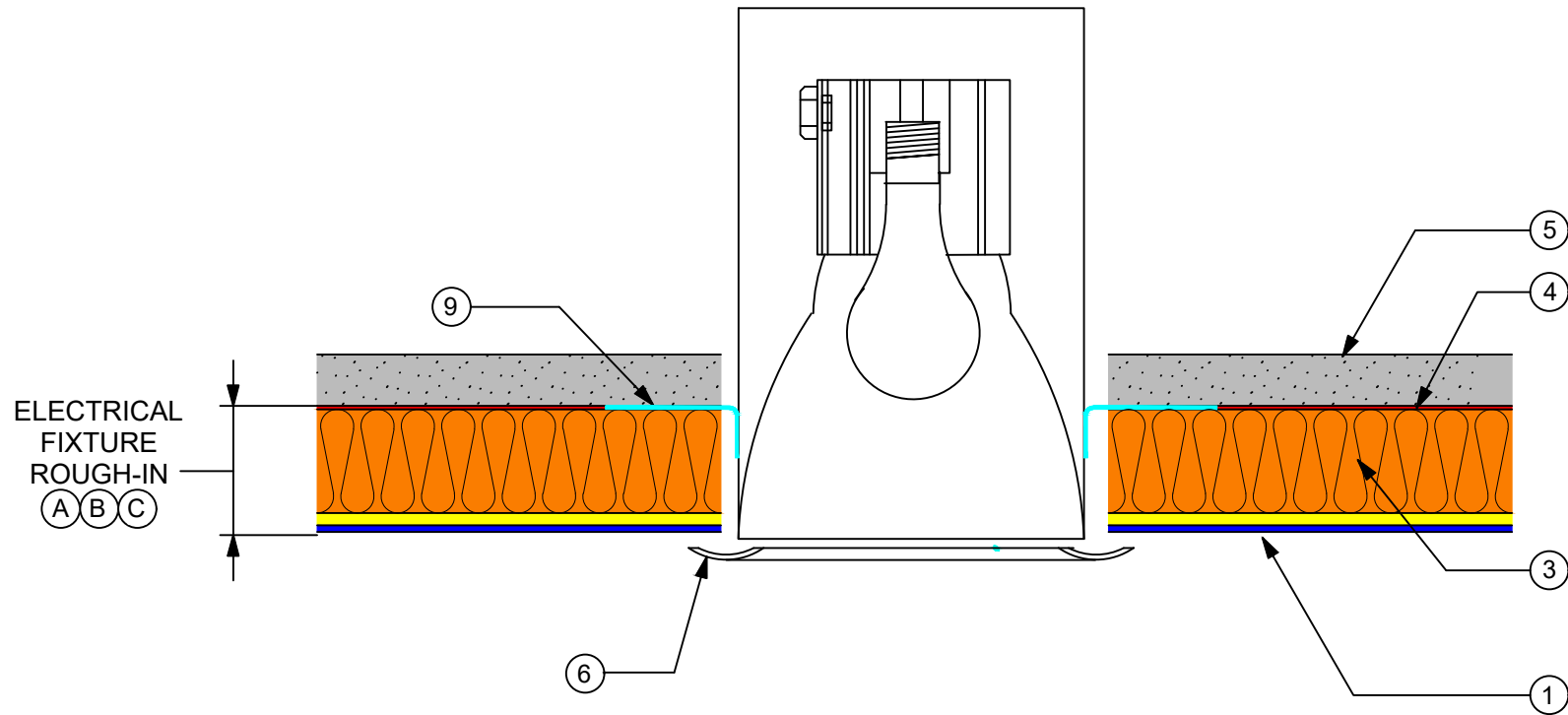
- 1 BASWA Fine Finish Coat
Fine coat gauged using 6mm notched trowel (a050)
- 3 BASWA Pre-Coated Supporting Panel
- 4 BASWA Adhesive
- 5 Stable Substrate
- 6 Vinyl Trim BAS S010 Corner Bead*
- 7 Drywall Finished and Painted

DIMENSIONS			
SYSTEM	(A)	(B)	(C)
TOTAL THICKNESS	1 3/16" (30MM)	1 9/16" (40MM)	2 3/4" (70MM)
DRYWALL OVERHANG BELOW FACE OF SUBSTRATE	1"	1 3/8"	2 9/16"

*All Vinyl Trims Applied with Trim Tex 847 Spray Adhesive

BASWA Phon Fine Finish

RECESSED LIGHT DETAIL #6

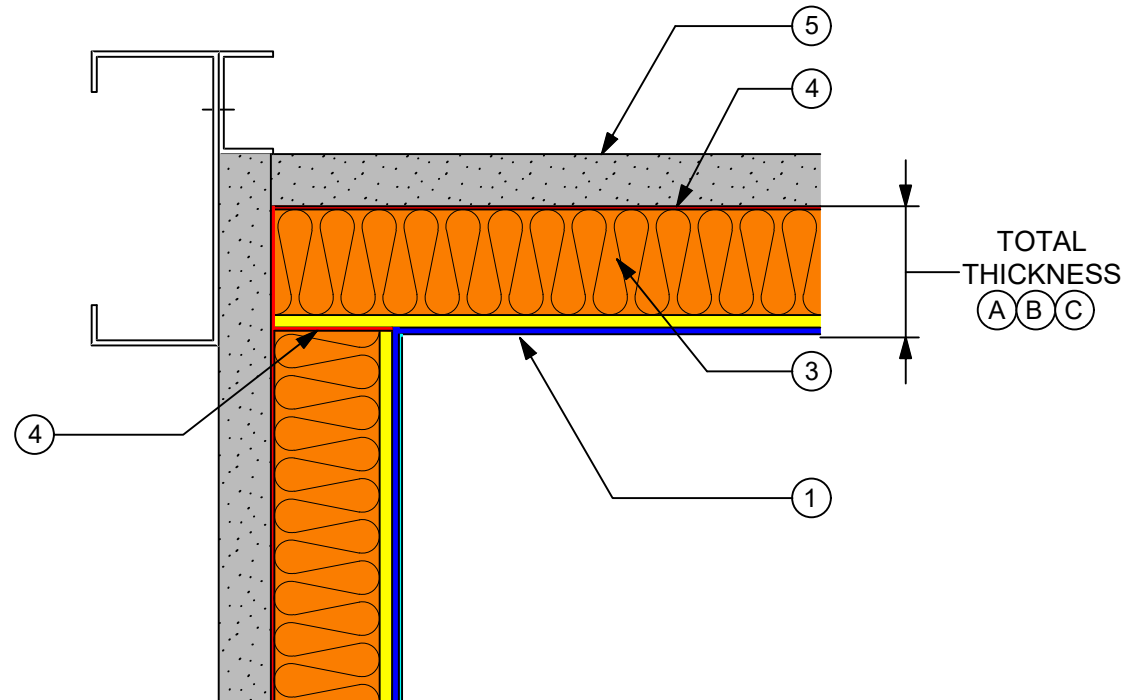


- 1 BASWA Fine Finish Coat
Fine coat gauged using 6mm notched trowel (a050)
- 3 BASWA Pre-Coated Supporting Panel
- 4 BASWA Adhesive
- 5 Stable Substrate
- 6 Surface Mounted Trim Piece
- 9 Adhesive Tape (to prevent air filtration)

DIMENSIONS			
SYSTEM	(A)	(B)	(C)
TOTAL THICKNESS	1 3/16" (30MM)	1 9/16" (40MM)	2 3/4" (70MM)
FIXTURE ROUGH IN BELOW FACE OF SUBSTRATE	1"	1 3/8"	2 9/16"

BASWA Phon Fine Finish

INSIDE CORNER DETAIL: BASWA Phon to BASWA Phon DETAIL #7

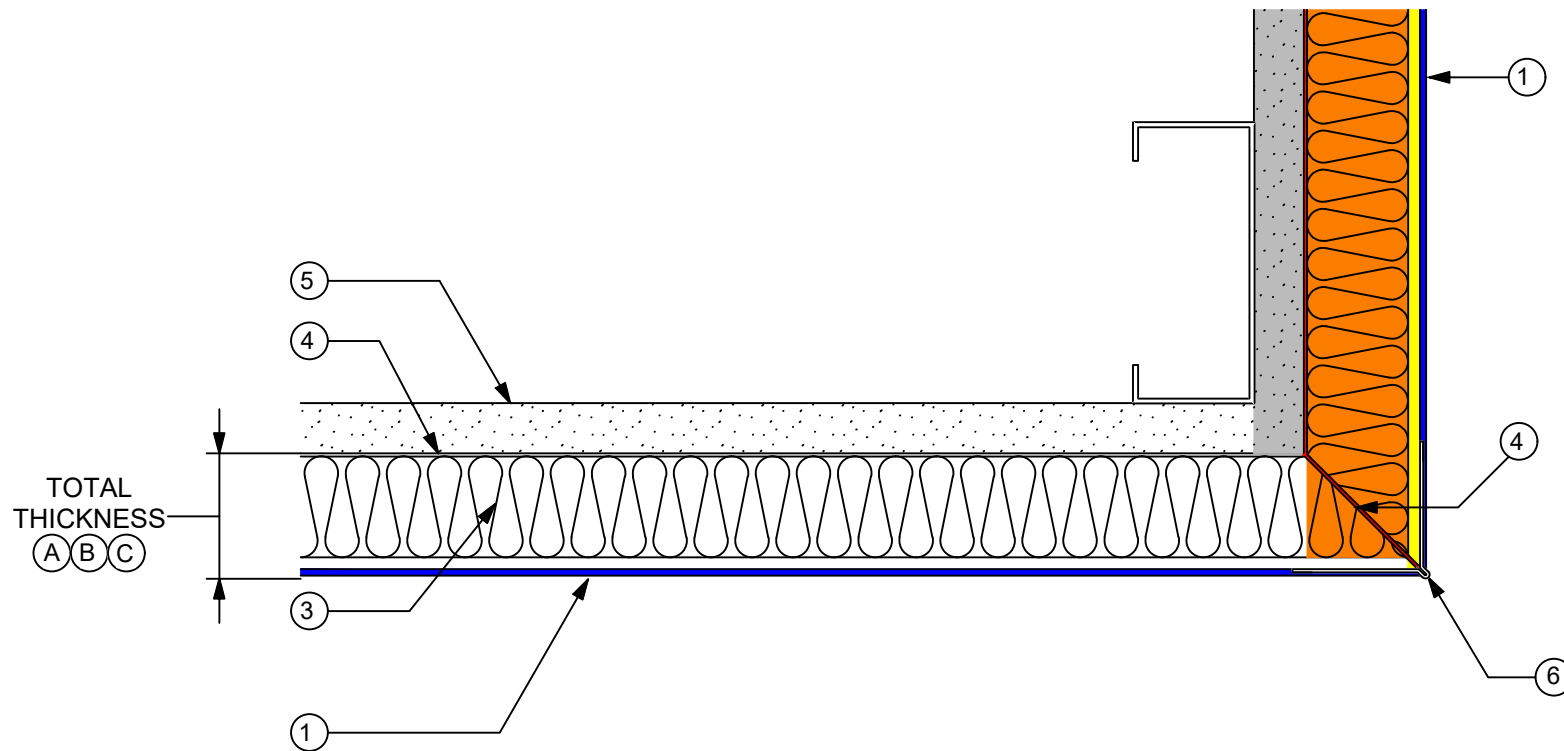


- 1 BASWA Fine Finish Coat
Fine coat gauged using 6mm notched trowel (a050)
- 3 BASWA Pre-Coated Supporting Panel
- 4 BASWA Adhesive
- 5 Stable Substrate

DIMENSIONS			
SYSTEM	(A)	(B)	(C)
TOTAL THICKNESS	1 3/16" (30MM)	1 9/16" (40MM)	2 3/4" (70MM)

BASWA Phon Fine Finish

OUTSIDE CORNER DETAIL: BASWA to BASWA Phon DETAIL #8



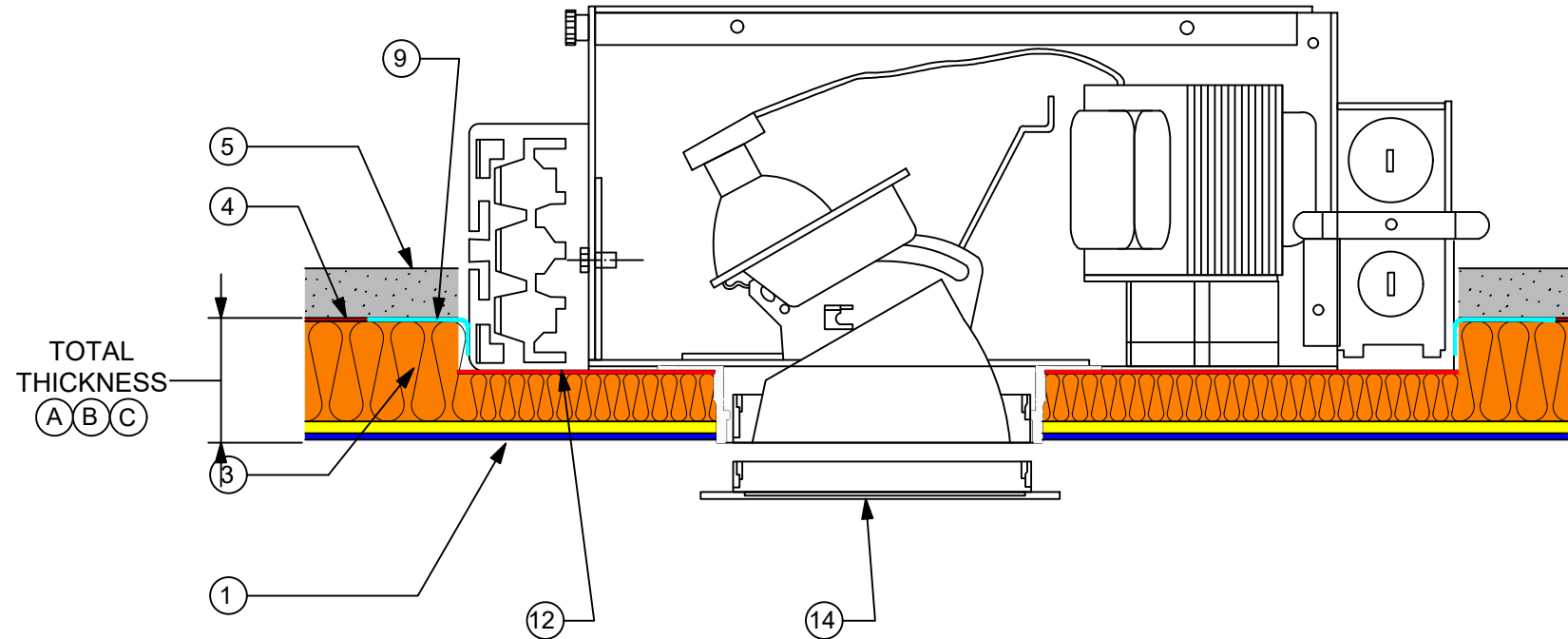
- 1 BASWA Fine Finish Coat
Fine coat gauged using 6mm notched trowel (a050)
- 3 BASWA Pre-Coated Supporting Panel
- 4 BASWA Adhesive
- 5 Stable Substrate
- 6 Vinyl Trim BAS S010 Corner Bead*

DIMENSIONS			
SYSTEM	(A)	(B)	(C)
TOTAL THICKNESS	1 3/16" (30MM)	1 9/16" (40MM)	2 3/4" (70MM)

*All Vinyl Trims Applied with Trim Tex 847 Spray Adhesive

BASWA Phon Fine Finish

RECESSED LIGHT FIXTURE DETAIL #11

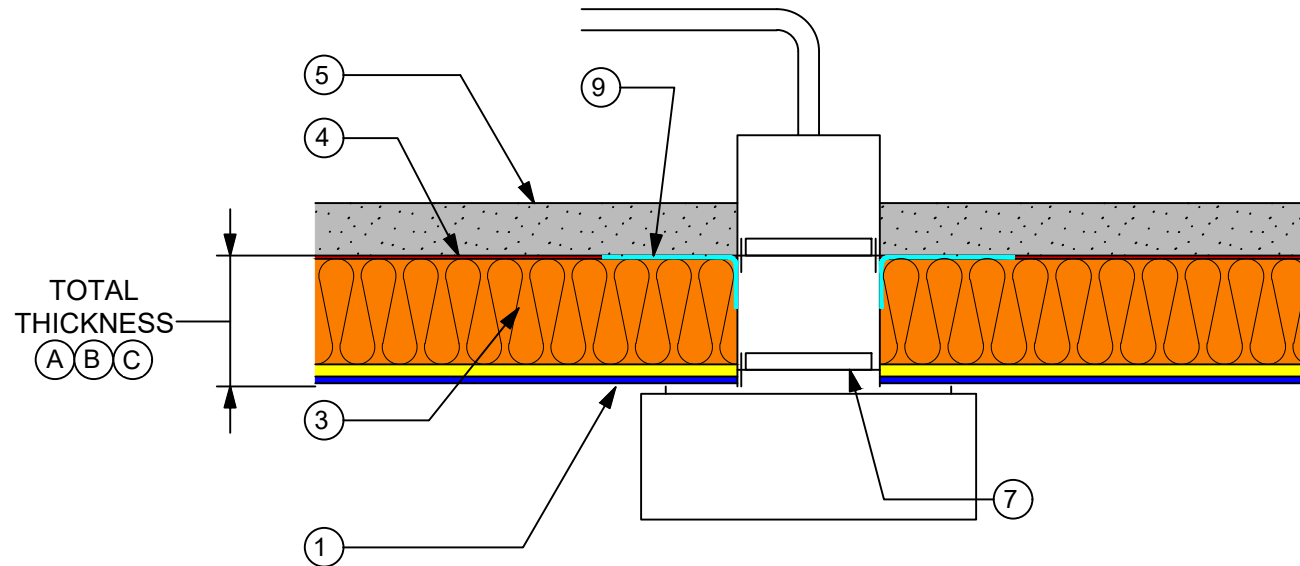


- 1 BASWA Fine Finish Coat
Fine coat gauged using 6mm notched trowel (a050)
- 3 BASWA Pre-Coated Supporting Panel
- 4 BASWA Adhesive
- 5 Stable Substrate
- 9 Adhesive Tape (to prevent air filtration)
- 12 Cut Out Back of Panel
- 14 Surface Mounted Trim Piece

DIMENSIONS			
SYSTEM	(A)	(B)	(C)
TOTAL THICKNESS	1 3/16" (30MM)	1 9/16" (40MM)	2 3/4" (70MM)
FIXTURE ROUGH IN BELOW FACE OF SUBSTRATE	1"	1 3/8"	2 9/16"

BASWA Phon Fine Finish

CEILING MOUNTED FIXTURE #12

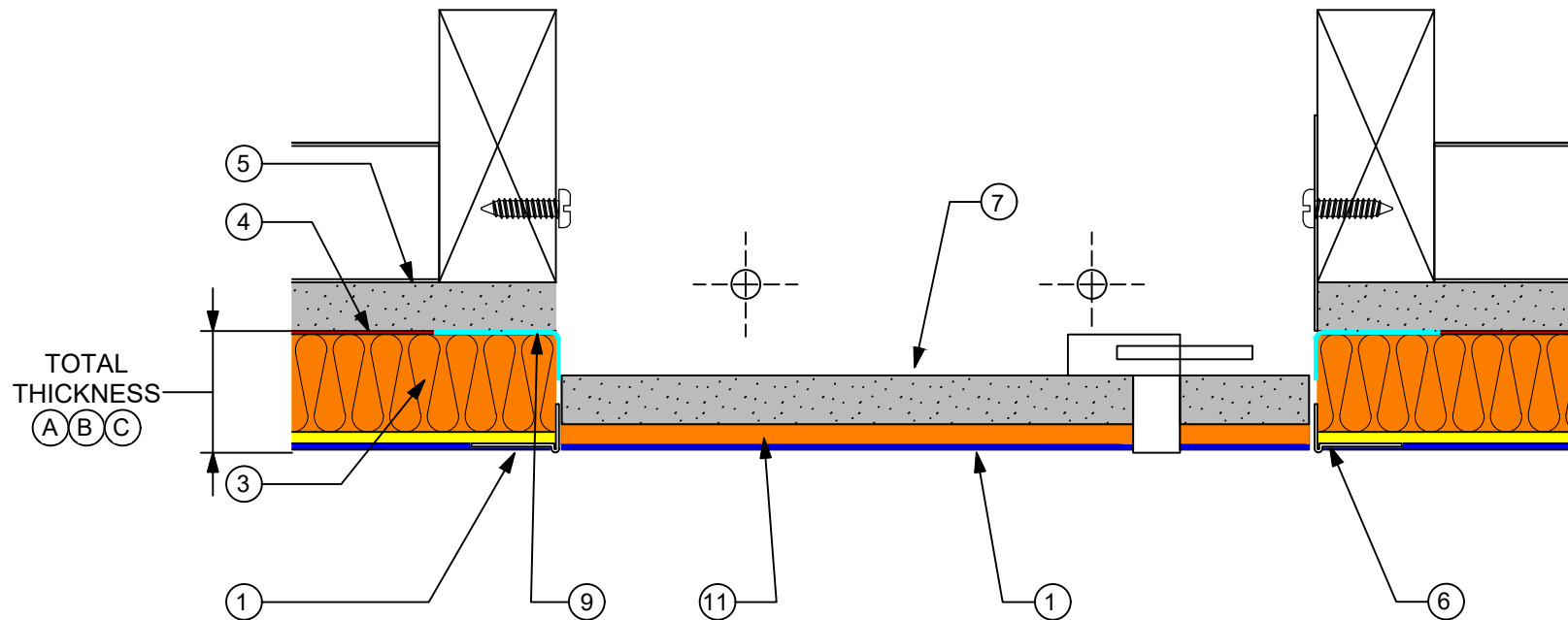


- 1 BASWA Fine Finish Coat
Fine coat gauged using 6mm notched trowel (a050)
- 3 BASWA Pre-Coated Supporting Panel
- 4 BASWA Adhesive
- 5 Stable Substrate
- 7 Electrical Junction Box Extension
- 9 Adhesive Tape (to prevent air infiltration)

DIMENSIONS			
SYSTEM	(A)	(B)	(C)
TOTAL THICKNESS	1 3/16" (30MM)	1 9/16" (40MM)	2 3/4" (70MM)
FIXTURE ROUGH IN BELOW FACE OF SUBSTRATE	1"	1 3/8"	2 9/16"

BASWA Phon Fine Finish

ACCESS PANEL DETAIL #15



- 1 BASWA Fine Finish Coat
Fine coat gauged using 6mm notched trowel (a050)
- 3 BASWA Pre-Coated Supporting Panel
- 4 BASWA Adhesive
- 5 Stable Substrate
- 6 Vinyl Trim BAS 3310 5/8" L Bead
- 7 5/8" Drywall
- 9 Adhesive Tape (to prevent air infiltration)
- 11 BASWA Fill
- 14 Access Door (Acudor AT-5020)

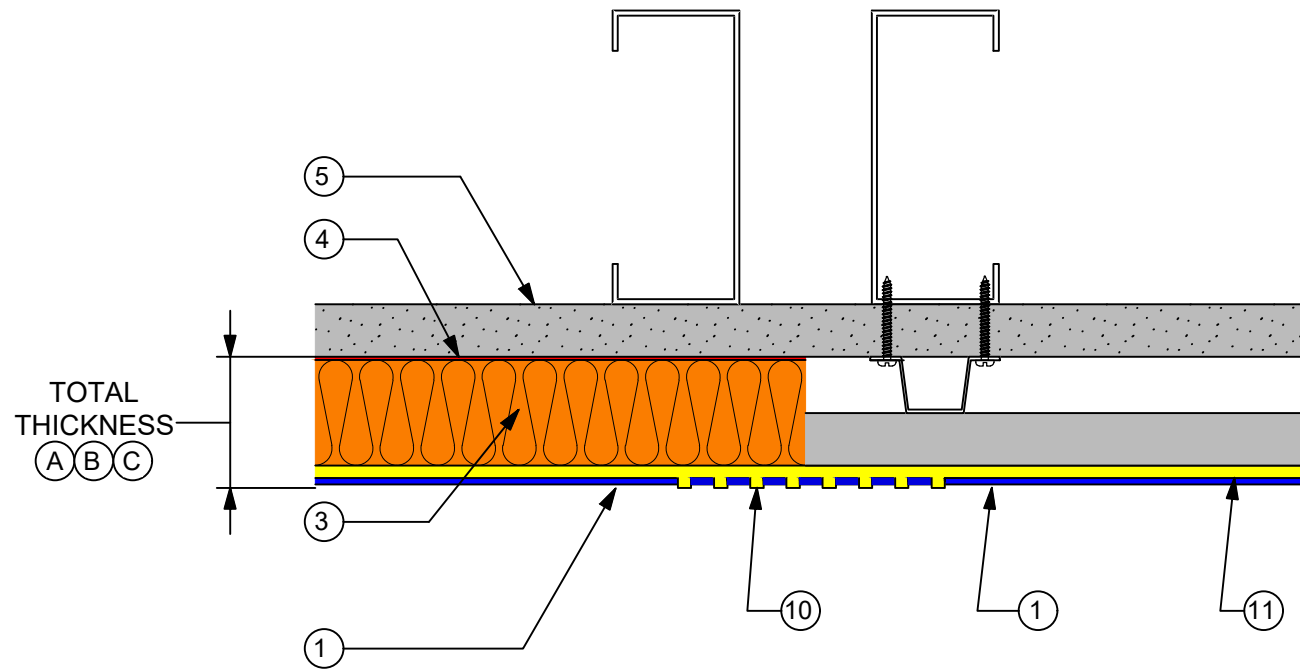
DIMENSIONS

SYSTEM	(A)	(B)	(C)
TOTAL THICKNESS	1 3/16" (30MM)	1 9/16" (40MM)	2 3/4" (70MM)
ACCESS PANEL ROUGH IN BELOW FACE OF SUBSTRATE	1 3/16"	1 9/16"	2 3/4"

*All Vinyl Trims Applied with Trim Tex 847 Spray Adhesive

BASWA Phon Fine Finish

BASWA Phon DRYWALL TRANSITION DETAIL #21

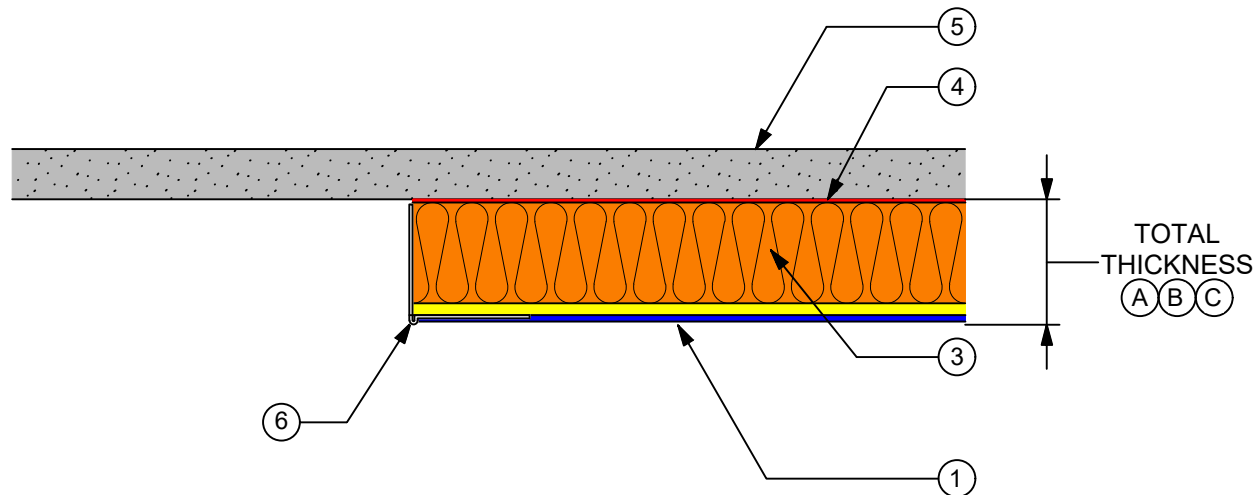


- 1 BASWA Fine Finish Coat
Fine coat gauged using 6mm notched trowel (a050)
- 3 BASWA Pre-Coated Supporting Panel
- 4 BASWA Adhesive
- 5 Stable Substrate
- 10 Fiberglass Mesh Tape
- 11 BASWA Fill

DIMENSIONS			
SYSTEM	A	B	C
TOTAL THICKNESS	1 3/16" (30MM)	1 9/16" (40MM)	2 3/4" (70MM)

BASWA Phon Fine Finish

TERMINATION (L-BEAD) DETAIL #25



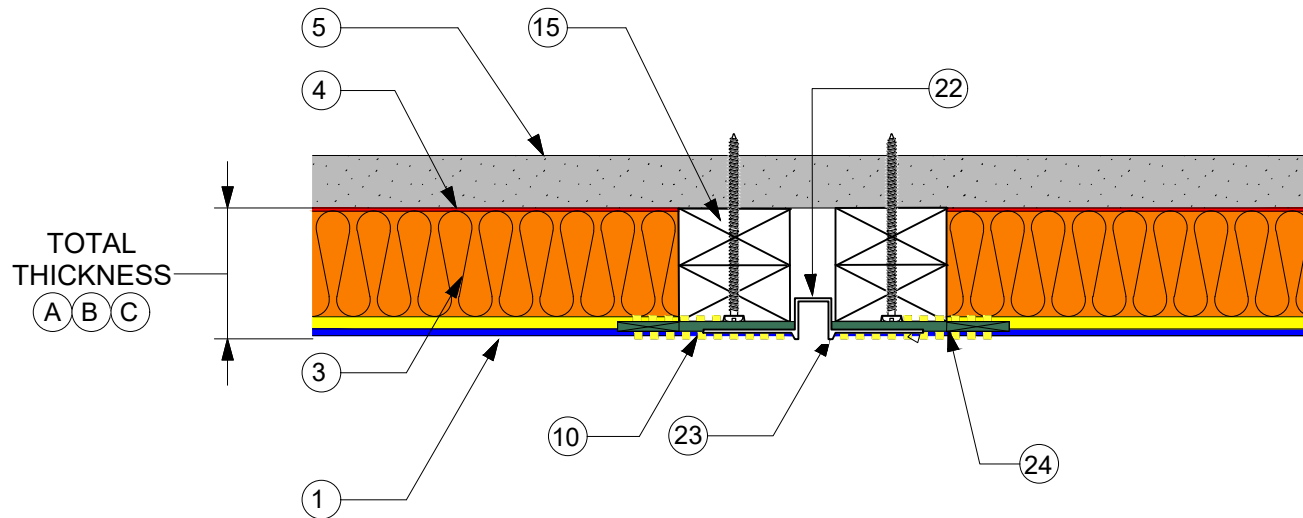
- 1 BASWA Fine Finish Coat
Fine coat gauged using 6mm notched trowel (a050)
- 3 BASWA Pre-Coated Supporting Panel
- 4 BASWA Adhesive
- 5 Stable Substrate
- 6 Vinyl Trim (Refer to Dimension Box)

DIMENSIONS			
SYSTEM	(A)	(B)	(C)
TOTAL THICKNESS	1 3/16" (30MM)	1 9/16" (40MM)	2 3/4" (70MM)
TRIM TEX TRIM TO USE	BAS 3510	BAS 3650	BAS 3710

*All Vinyl Trims Applied with Trim Tex 847 Spray Adhesive

BASWA Phon Fine Finish

BLOCKING FOR METAL REVEAL DETAIL #40



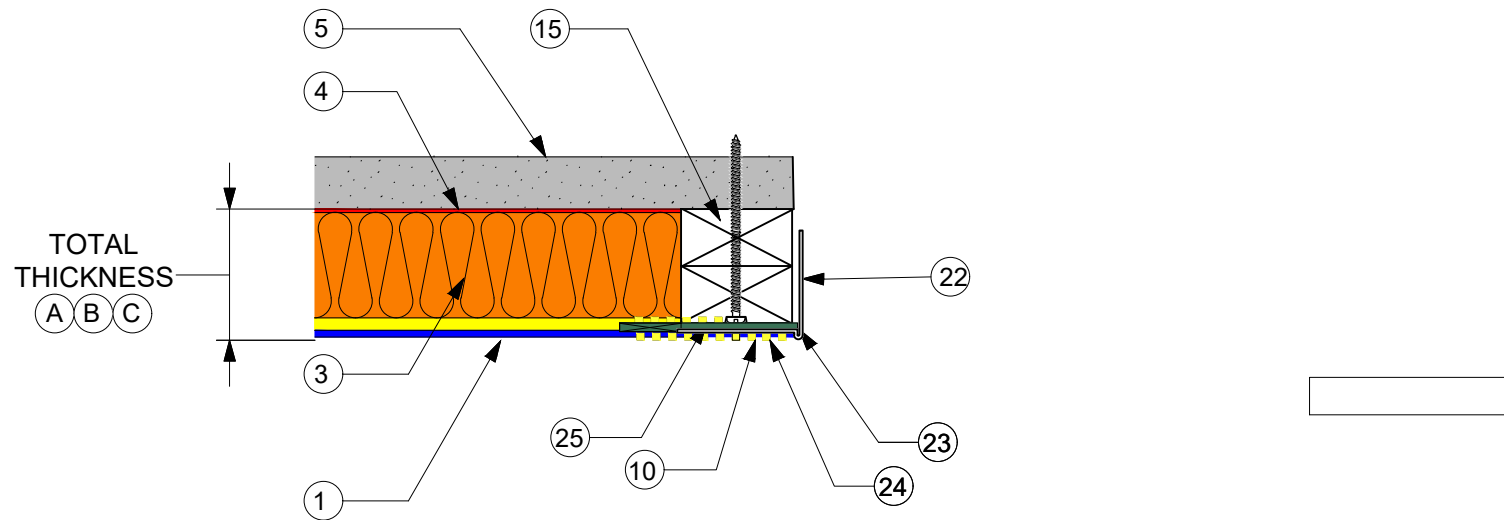
- 1 BASWA Fine Finish Coat
Fine coat gauged using 6mm notched trowel (a050)
- 3 BASWA Pre-Coated Supporting Panel
- 4 BASWA Adhesive
- 5 Stable Substrate
- 10 Fiberglass Mesh Tape**
- 15 Blocking
- 22 Metal Trims Secured to Framing with Screws
- 23 BASWA Pre-fill to Edge Before Applied Metal Trim is Installed
- 24 BASWA Pre-fill on Face 2" wide to accept Mesh Tape & Pre-fill

DIMENSIONS			
SYSTEM	(A)	(B)	(C)
TOTAL THICKNESS	1 3/16" (30MM)	1 9/16" (40MM)	2 3/4" (70MM)
BLOCKING ROUGH IN BELOW SUBSTRATE	7/8"	1 1/4"	2 3/8"

*All Vinyl Trims Applied with Trim Tex 847 Spray Adhesive
 **Mesh Tape Applied with 3M 90 High Strength Spray Adhesive

BASWA Phon Fine Finish

BLOCKING FOR METAL "L" TRIM DETAIL #41



- 1 BASWA Fine Finish Coat
Fine coat gauged using 6mm notched trowel (a050)
- 3 BASWA Pre-Coated Supporting Panel
- 4 BASWA Adhesive
- 5 Stable Substrate
- 10 Fiberglass Mesh Tape
- 15 Blocking
- 22 Metal Trims Secured to Framing with Screws
- 23 Pre-fill to Edge Before Applied Metal Trim is Installed
- 24 Sand Pre-fill on Face 2" wide to accept Mesh Tape & Pre-fill
- 25 Mesh Tape Applied with 3M 90 High Strength Spray Adhesive

DIMENSIONS			
SYSTEM	(A)	(B)	(C)
TOTAL THICKNESS	1 3/16" (30MM)	1 9/16" (40MM)	2 3/4" (70MM)
BLOCKING ROUGH IN BELOW SUBSTRATE	7/8"	1 1/4"	2 3/8"

*All Vinyl Trims Applied with Trim Tex 847 Spray Adhesive