

AUTISM SERVICES PRESENTS



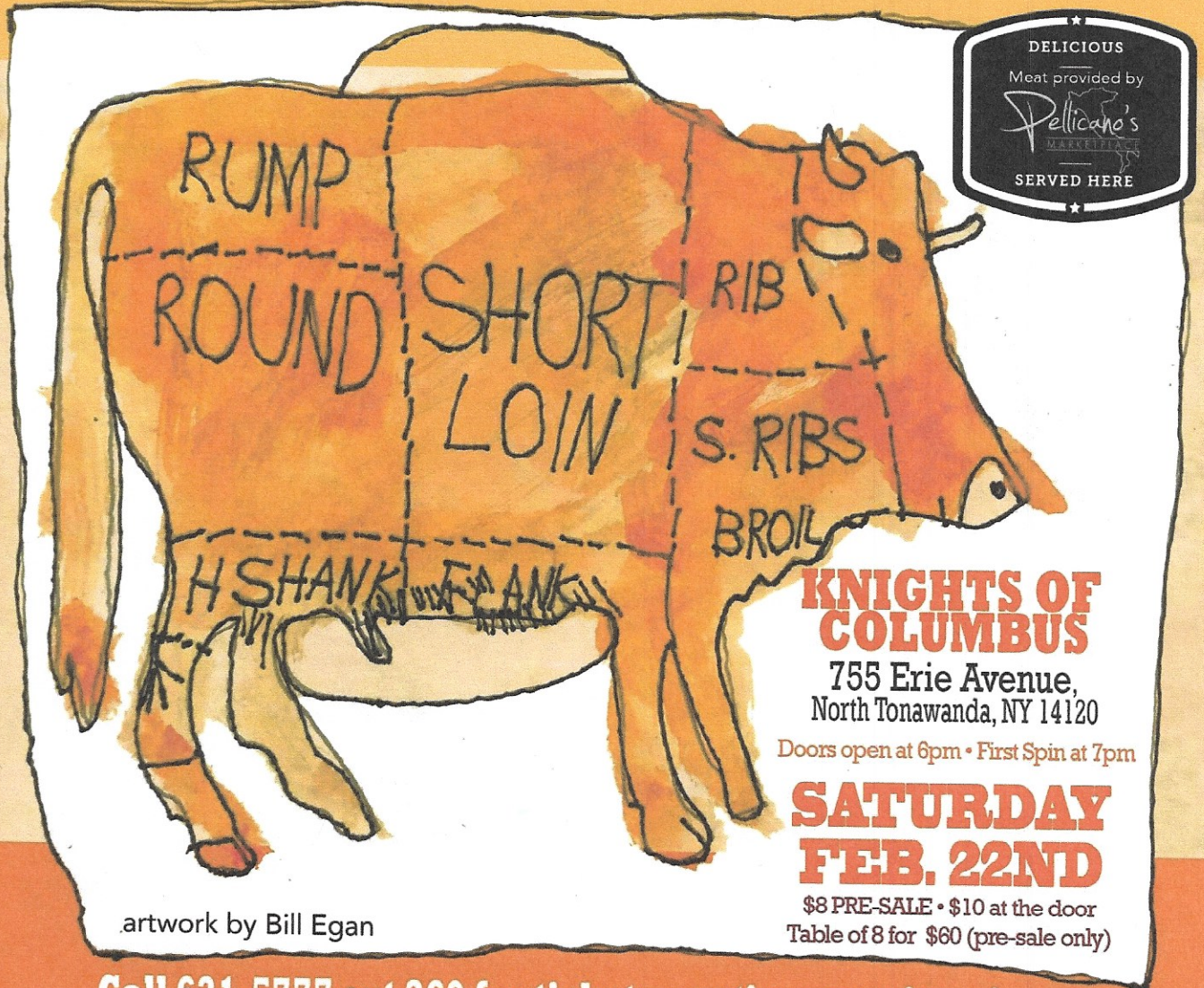
The Thomas J. Mazur 2nd Annual Meat Raffle

# MEAT RAFFLE

to benefit ASI

BEER, POP AND WINE INCLUDED. NO BYOB! BRING PLENTY OF **SINGLES**,  
A COOLER FOR YOUR WINNINGS AND SNACKS TO ENJOY DURING THE RAFFLE!

**50/50 Raffle • Basket Raffle • Prizes**



DELICIOUS  
Meat provided by  
*Pellicano's*  
MARKETPLACE  
SERVED HERE

**KNIGHTS OF COLUMBUS**

755 Erie Avenue,  
North Tonawanda, NY 14120

Doors open at 6pm • First Spin at 7pm

**SATURDAY  
FEB. 22ND**

\$8 PRE-SALE • \$10 at the door  
Table of 8 for \$60 (pre-sale only)

artwork by Bill Egan

Call 631-5777 ext 369 for tickets • [autism-services-inc.org](http://autism-services-inc.org)

Proceeds to help build a playground at the Thomas J. Mazur Academic Building, 30 Hazelwood Drive, Amherst, NY