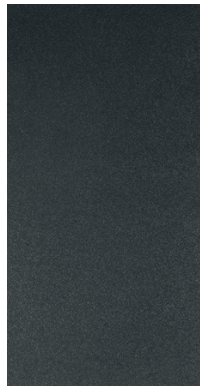




**BLACK
RECTIFIED
24" X 24"**



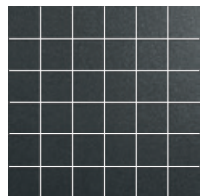
**BLACK
RECTIFIED
12" X 24"**



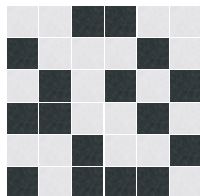
**SUPER WHITE
RECTIFIED
24" X 24"**



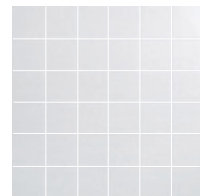
**SUPER WHITE
RECTIFIED
12" X 24"**



**BLACK
MOSAIC
12" X 12"**



**MIX
MOSAIC
12" X 12"**



**SUPER WHITE
MOSAIC
12" X 12"**



PACKAGING INFORMATION

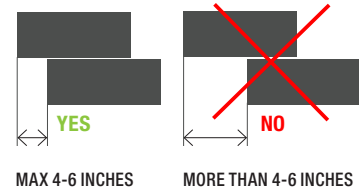
Size	Type	Colour	Pcs. per Box	Boxes per Skid	Pcs. per S/F
12" x 24"	Rectified	All	6	48	0.516
24" x 24"	Rectified	All	3	40	0.258
2" x 2" (12" x 12")	Mosaic	All	5	90	1.032
2" x 2" (12" x 12")	Mix Mosaic	All	5	90	1.032

TECHNICAL INFORMATION

CB Colour Body	Yes	Water Absorption	< 0.5%
PEI PEI (Wear Resistance)	3 (Black), 5 (White)	Slip Resistance	Class 2
Shade Variation	V1 (Low)	Porcelain	Yes
Frost Resistance	Yes	Floor	Yes
MOHS (Scratch Resistance)	7	Wall	Yes
Thickness	9.6 mm	Country of origin	Spain

"RUNNING BOND" PATTERNS

When rectangular products are laid in "Running Bond" patterns, the longest side should be staggered in relation to the length of the piece next to it by no more than 4-6 inches.



The technical information listed above has been supplied by the manufacturer and may be subject to change without notice. For further details, please contact your Midgley West® Sales Representative.