

**ANTHRACITE**



4" x 24" CHEVRON  
RECTIFIED

**DARK GREY**



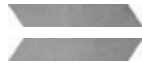
4" x 24" CHEVRON  
RECTIFIED

**IVORY**



4" x 24" CHEVRON  
RECTIFIED

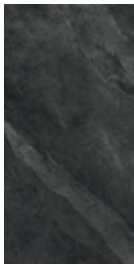
**MID GREY**



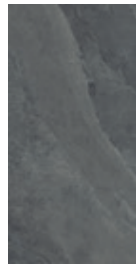
4" x 24" CHEVRON  
RECTIFIED



24" x 48"  
RECTIFIED



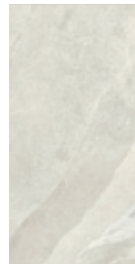
24" x 48"\*  
RECT. STRUCT.



24" x 48"  
RECTIFIED



24" x 48"\*  
RECT. STRUCT.



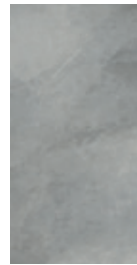
24" x 48"  
RECTIFIED



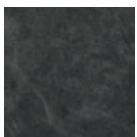
24" x 48"\*  
RECT. STRUCT.



24" x 48"  
RECTIFIED



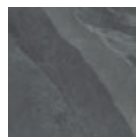
24" x 48"\*  
RECT. STRUCT.



24" x 24"  
RECTIFIED



12" x 24"  
RECTIFIED



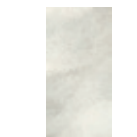
24" x 24"  
RECTIFIED



12" x 24"  
RECTIFIED



24" x 24"  
RECTIFIED



12" x 24"  
RECTIFIED



24" x 24"  
RECTIFIED



12" x 24"  
RECTIFIED



2" x 2" (12" x 12")  
MOSAIC



12" x 12" MOSAIC  
ASYMMETRICAL\*



2" x 2" (12" x 12")  
MOSAIC



12" x 12" MOSAIC  
ASYMMETRICAL\*



2" x 2" (12" x 12")  
MOSAIC



12" x 12" MOSAIC  
ASYMMETRICAL\*



2" x 2" (12" x 12")  
MOSAIC



12" x 12" MOSAIC  
ASYMMETRICAL\*

\*SPECIAL ORDER. ALLOW 8-10 WEEKS. FULL BOX ORDERS ONLY. NO RETURNS.



## PACKAGING INFORMATION

Size	Type	Colour	Pcs. per Box	Boxes per Skid	Pcs. per S/F
12" x 24"	Rectified	All	7	40	0.5
24" x 24"	Rectified	All	4	30	0.249
24" x 48"	Rectified	All	2	36	0.124
24" x 48" FP-2*	Rectified, Structured	All	1	36	0.1255
4" x 24"	Chevron, Rectified	All	12	60	1.715
12" x 12"*	Mosaic asymmetrical	All	9	48	1.032
2" x 2" (12" x 12")	Mosaic	All	7	60	1.032

\* SPECIAL ORDER

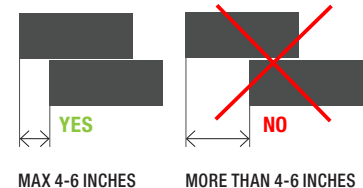
### TECHNICAL INFORMATION

Colour Body	Yes	Water Absorption	≤ 0.5%
PEI (Wear Resistance)	N/A	Slip Resistance	≥ 0.42
Shade Variation	V4 (Random)	Porcelain	Yes
Frost Resistance	Yes	Floor	Yes
MOHS (Scratch Resistance)	N/A	Wall	Yes
Thickness	9 mm, 9.5 mm (24" x 48"), 19.3 mm (24" x 48" FP-2)	Country of origin	Italy

The technical information listed above has been supplied by the manufacturer and may be subject to change without notice. For further details, please contact your Midgley West<sup>®</sup> Sales Representative.

### "RUNNING BOND" PATTERNS

When rectangular products are laid in "Running Bond" patterns, the longest side should be staggered in relation to the length of the piece next to it by no more than 4-6 inches.



### TERMS AND CONDITIONS FOR SPECIAL ORDERS

- A 50% deposit will be required before an order is placed at the factory
- Special orders may be subject to additional freight and less-than-a-pallet fee from the factory
- Delivery may require between 8 to 10 weeks to complete from the moment an order is placed
- Full box orders only allowed. No return of merchandise will be accepted
- Shipments from our warehouse to your destination may require the charge of extra fees
- Please contact your Midgley West<sup>®</sup> Sales Representative for info on any charge that may apply

