

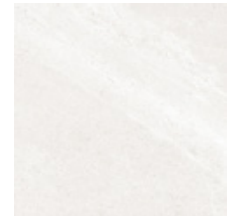
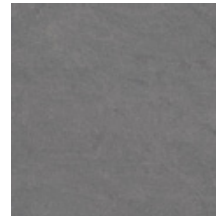


**ASH**

**BEIGE**

**COAL**

**ICE**

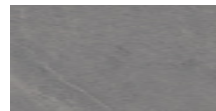
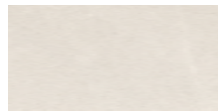
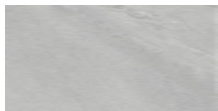


**24" x 24"  
RECTIFIED**

**24" x 24"  
RECTIFIED**

**24" x 24"  
RECTIFIED**

**24" x 24"  
RECTIFIED**

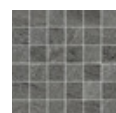


**12" x 24"  
RECTIFIED**

**12" x 24"  
RECTIFIED**

**12" x 24"  
RECTIFIED**

**12" x 24"  
RECTIFIED**



**2" x 2" (12" x 12")  
MOSAIC**

**2" x 2" (12" x 12")  
MOSAIC**

**2" x 2" (12" x 12")  
MOSAIC**

**2" x 2" (12" x 12")  
MOSAIC**



**PACKAGING INFORMATION**

Size	Type	Colour	Pcs. per Box	Boxes per Skid	Pcs. per S/F
12" x 24"	Rectified	All	7	40	0.500
24" x 24"	Rectified	All	4	30	0.249
2" x 2" (12" x 12")	Mosaic	All	7	-	1

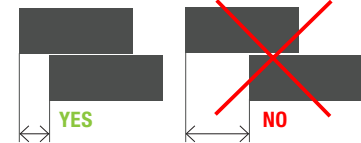
**TECHNICAL INFORMATION**

<b>CB</b> Colour Body	Yes	<b>Water Absorption</b>	≤ 0.5%
<b>PEI</b> PEI (Wear Resistance)	4	<b>Slip Resistance</b>	R10
<b>Shade Variation</b>	V3 (High)	<b>Porcelain</b>	Yes
<b>Frost Resistance</b>	Yes	<b>Floor</b>	Yes
<b>MOHS</b> (Scratch Resistance)	N/A	<b>Wall</b>	Yes
<b>Thickness</b>	9 mm	<b>Country of origin</b>	Italy

The technical information listed above has been supplied by the manufacturer and may be subject to change without notice. For further details, please contact your Midgley West® Sales Representative.

**"RUNNING BOND" PATTERNS**

When rectangular products are laid in "Running Bond" patterns, the longest side should be staggered in relation to the length of the piece next to it by no more than 4-6 inches.



MAX 4-6 INCHES

MORE THAN 4-6 INCHES

