

# Levine Electronics and Electric Line Card

Serving Georgia, Alabama, Florida,  
Mississippi, Tennessee, and Arkansas

# The Team

## Outside Sales

John Levine, PE (*GA*)

Rich Lussier (*GA, TN*)

Billy Sanders (*AL, MS, FL Pan*)

Adam Norrell (*AL, MS, FL Pan*)

Carlin Boswell (*FL, S. GA*)

Maurice Allen (*AL, GA, TN*)

Michael Kahn (*GA, TN*)

Kris Vance (*FL*)

Jim Lazzara (*FL*)

Jeff Shallbetter (*FL*)

Terrence Smith (*TN*)

Scott Benson (*AL*)

## Inside Sales

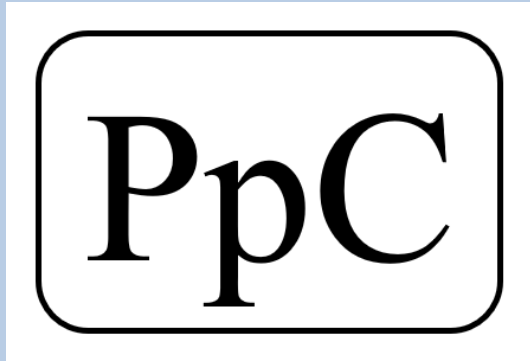
Ava Maguire

Doris Sherrill

Craig McLean

Brooke Sever

Austin Broadfoot



# Power Plus Controls

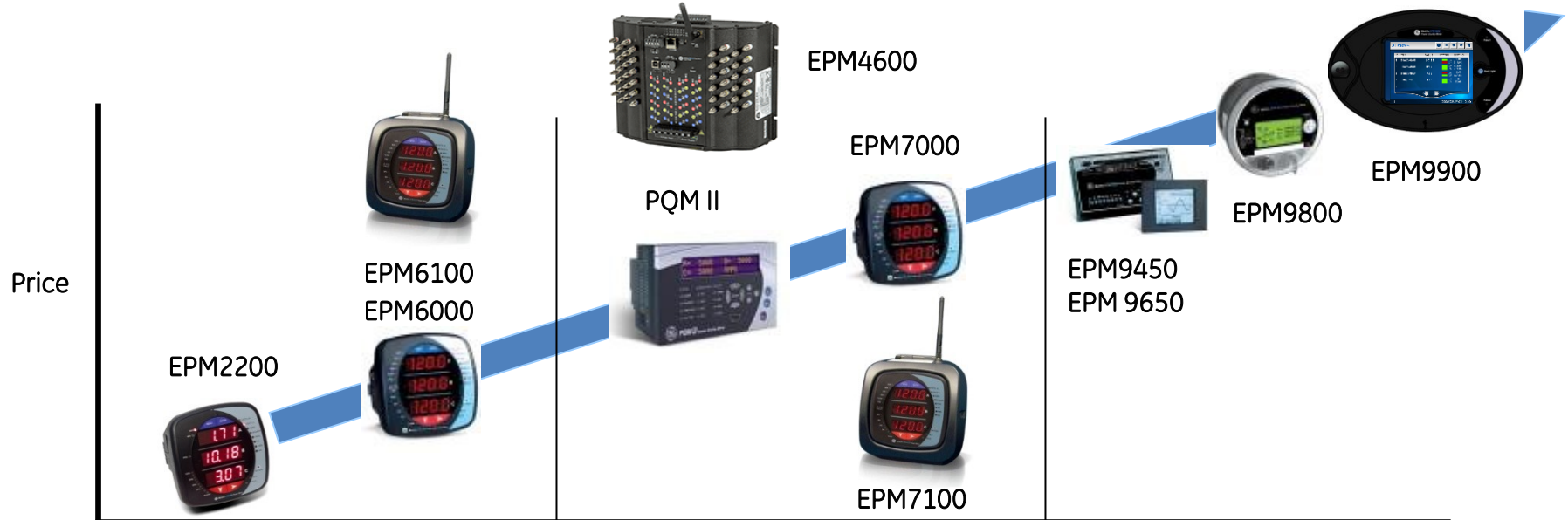
- Sister Company to Levine Electronics and Letric, Inc.
- Electrical Distributor to assist Customers and Distributors to find hard to find items, reconditioned equipment, emergency equipment
- Service Arm for L<sup>3</sup>





# GE Multilin Meters

***GE Multilin has a full spectrum of advanced metering***



Basic Power Monitoring

Power Quality & Cost Management

Advanced PQ Analysis

- Replacement of Analog Meters
- Campus Monitoring
- Energy Management
- Generator over and under voltage
- Over frequency monitoring
- Continuous monitoring
- Voltage Studies
- Monitoring Transformer losses
- Monitoring transients
- Time of Use energy use





# GE Automation



## Applications

- Mini Data Concentrator
- Distribution Automation / Pole Mount applications.

- Small Point Count RTU
- Digital Fault Recorder
- Measurement
- Bay Controller
- M&D Equipment Integration

- Medium Centralized Systems.
- Integration of Legacy devices.
- Communication to Master Stations.

- IEC 61850 Systems
- Cyber Security
- Local HMI

- Large Centralized SCADA systems.
- Large Serial Port density.



Communication Gateways to fit any size of applications



# GE Monitoring and Diagnostics

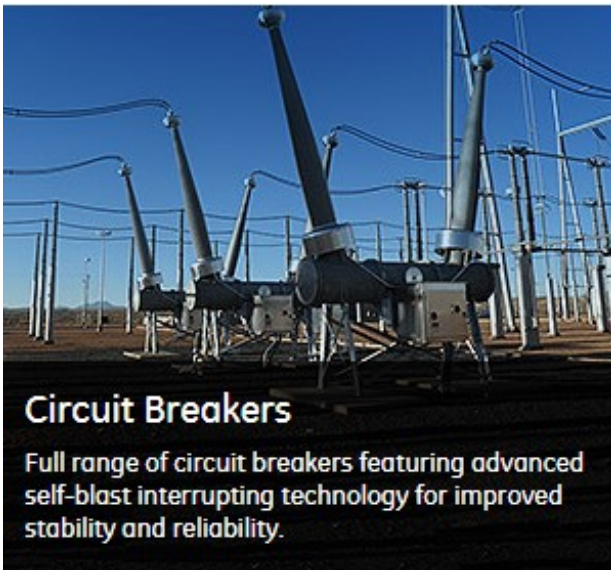
GE provides power utilities and industrial organizations with a wide range of transformer monitoring solutions. For more than 35 years, we have developed advanced technological hardware and user-friendly software to enable continuous monitoring, detect impending issues and provide accurate diagnostics to help maximize critical asset operational uptime.





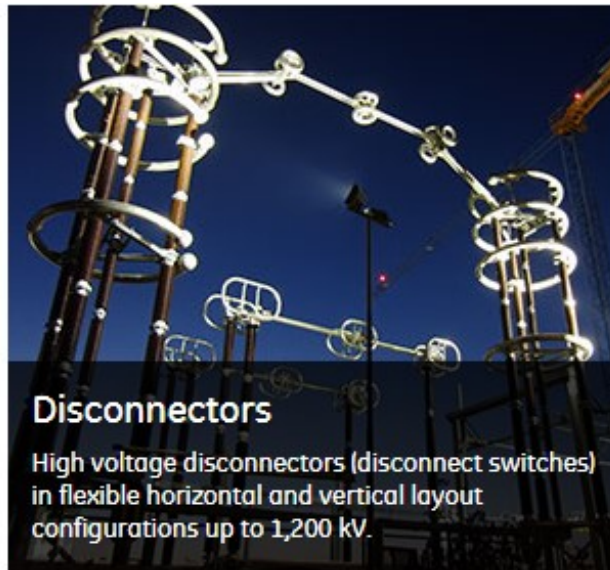


# GE HV/ MV Equipment



## Circuit Breakers

Full range of circuit breakers featuring advanced self-blast interrupting technology for improved stability and reliability.



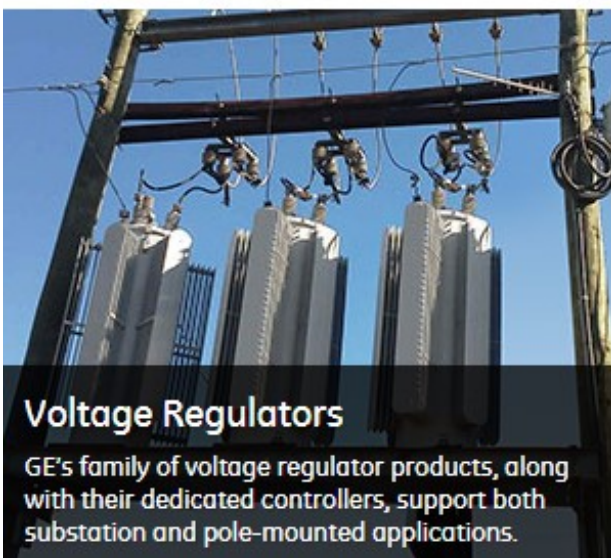
## Disconnectors

High voltage disconnectors (disconnect switches) in flexible horizontal and vertical layout configurations up to 1,200 kV.



## Instrument Transformers

Suite of high accuracy current and voltage measurement devices for the effective operation and management of T&D systems.



## Voltage Regulators

GE's family of voltage regulator products, along with their dedicated controllers, support both substation and pole-mounted applications.



## Bushings, Post Insulators & Surge Arresters



## Capacitors & Reactors

GE's reactive power compensation solutions improve power quality by eliminating disturbances and improving power factor.





# EP Industrial Solutions

## ABB's Full UL rated Transfer Switch and Paralleling Switchgear portfolio



Open Style ATS

Enclosed ATS: Going to Market as ABB Zenith

### TruONE



#### OEM general purpose, industrial & critical

- Open style ATS in standard or delayed transition
- 30-1200A, 200-480V ratings
- 2, 3 or 4 pole applications
- Modular all-in-one design with wide range of features in 3 controller levels

### ZTX

#### UPDATED



#### Small frame residential, commercial & light industrial

- Standard transition
- 30-1200A, 200-480V ratings
- 2, 3, or 4 pole applications
- Enclosed in type 1 or type 3R enclosures

### ZTG

#### UPDATED



#### General purpose commercial & industrial

- Standard or delayed transition for transfer with a timed "off" position
- Ekip connectivity and advanced interface from 30-1200A,
- Extended ratings up to 3000A & 600Vac (2, 3, or 4 pole), and service entrance

### ZTS



#### Business & industrial critical

- Standard, delayed, or closed transition for make-before-break switching
- Extended ratings up to 4000A & 600Vac (2, 3, or 4 pole), and service entrance
- Maintenance bypass available on all frames and transition types

### ZTE



#### Mission, process & healthcare critical

- Specially-designed for critical applications, with built-in PQ metering, enhanced diagnostics, and connectivity
- Full color graphical display
- Standard, delayed, closed transition & bypass up to 4000A & 600Vac (2, 3 or 4 pole)



# EP Industrial Solutions

## Single and Three Phase UPS

### TLE Series



TLE Series UPS - 60 Hz,  
225-1000kW



TLE Series UPS - CE, 30-  
40kW



TLE Series UPS - CE, 40-  
120kW Scalable



TLE Series UPS - 50 Hz,  
160-400kW

### SG Series



SG Series UPS - 60 Hz,  
10-750kVA



SG Series UPS - 50 Hz,  
10-600kVA, 400Vac

### LP33 Series



LP33 Series II UPS - 15-  
100kVa, UL Version  
208/120VAC



LP33 Series I UPS 10-  
120kVa, CE Version  
380/400/415VAC



## StormSwitch

- **Range:** 70A-3000A
- **Connectors:**
  - 400A Cam-style Male Quick Disconnects
- **Enclosure Construction:**
  - NEMA 3R GalvaSteel
  - 304SS and 316SS Options



## TripleSwitch

- **Range:** 100A-3000A
- **Connectors:**
  - 400A Cam-style Male & Female Quick Disconnects
- **Enclosure Construction:**
  - NEMA 3R GalvaSteel
  - 304SS and 316SS Options







# Liquid Filled Transformers



VIRGINIA - GEORGIA TRANSFORMER  
ONE SOURCE-ONE COMMITMENT



- Distribution, Power, Rectifier, and Grounding Transformers
- UP to 1400MVA
- Primary Voltages up to 500KV



# PadMount Transformers

## Liquid Filled Padmount



- UP to 5MVA
- Primary Voltages up to 69KV



# Vantran

## TRANSFORMERS

- UP to 10 MVA
- Primary Voltage up to 34.5 KV
- Submersible Transformers
- Great submittal package



# Dry Type Transformers

- ❑ Capacity: 9 KVA thru 10 MVA
- ❑ Voltage: up to 34.5 KV
- ❑ Winding Configurations
  - Multiple Pulse (6, 12, 18, 24, etc.)
  - Unit Substation
  - Mining
  - Scott T Connection
  - Custom Medium Voltage Dry-Type
- ❑ Buy U.S. Statutes
  - Made in USA
  - ARRA (American Recovery and Reinvestment Act)
  - BAA (Buy American Act & Buy America Provisions)
  - TAA (Trade Agreements Act)
  - SPPA 73 P.S. 1881 (Steel Products Procurement Act)



# Cast Resin Transformers

## ➤ Cast Resin Power Transformers:

- From 150kVA to 25MVA
- Primary Voltages up to 34.5kV
- Transformers are rigidly bound in epoxy via a vacuum casting process
- Cast resin types highest on evolutionary spectrum of transformer technology
- Epoxy cast coils arranged coaxially around an iron core







# Post Glover

*"The Resistor Specialists"*



## High Resistance Grounding

Post Glover's industry leading PulserPlus.Net™ is an integral part of a system wide 98% arc-flash prevention strategy as well as providing 24/7 system reliability. The only digital HRG system on the market delivers flexible defense and the ability to communicate with your existing network protection package.

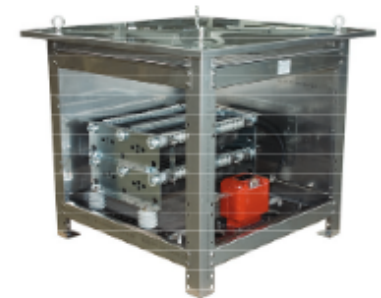
- UL and C-UL certified
- Available for Delta connected networks
- Low and medium voltage designs
- Stand-alone or switchgear cubicle installation



## Low Resistance Grounding

Standardized, pre-engineered packages allow for quick shipment and reduce your cost. Customers rely on our extensive experience to efficiently deal with unique applications.

- Available UL and CSA certifications eliminate field inspections
- Current transformers
- Special enclosure finish and materials
- Elevating structures
- Special side or top entrance/exit bushings
- Custom ratings



## MOTOR CONTROL

Relying on the industry's most innovative resistor manufacturer with over 100 years of experience takes the guesswork out of your motor control applications. With all resistor elements made from rugged, specialty stainless steel alloys, Post Glover is the one source for original or replacement resistors.

- Crane control resistors for all sizes of electric overhead cranes
- Wound rotor, induction and squirrel cage motor resistors





**AMR**  
**PEMCO**



## Batteries and Battery Chargers

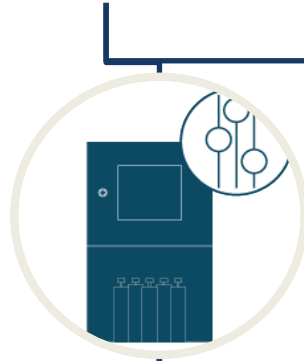
- Nickel Cadmium
  - Pocket Plate
  - Sintered / PBE
- Vented Lead Acid
  - OPzS (tubular)
  - Pasted Plate
- VRLA
  - Gel
  - AGM
- Battery Chargers
- Battery Racks and Cabinets



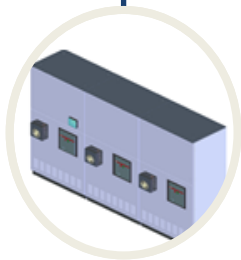


# **PRODUCT LINE OFFERING**

## PQ SOLUTIONS



*Equalizer (EQ)*



*Activar Plus (AP)*



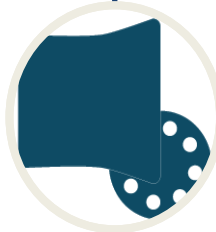
*Activar (AR)*



## METERING & PROTECTION



### PQ METERS



*PQSCADA Sapphire*



**G4K  
(Fixed)**



**G4500  
(Portable)**



**G5 Multifunction  
Meter  
(2018 Q3 Est. Launch)**

- ❖ The SPS product line includes a full complement of metal enclosures and buildings, low voltage controls and full switchgear systems up to 38kV





## Generator Paralleling Switchgear and Low Voltage Switchgear and Switchboards

- Voltage Rating: Up to 27KV
- Ampacity: Up to 10,000A
- Short Circuit Current Rating: Up to 200kA
- UL891, UL1558, & Metal Clad Available
- Suitable for Service Entrance Equipment
- Nema Type 1,3R,4,or 12 Enclosures
- Corrosive Environment Enclosures Available
- Front, Rear, and Side Access, optional future expansion provisions
- Engineering Design flexibility allows for custom sheet metal and bussing to allow for bus duct, cable, and transformer connections





# Padmount Switchgear

- ❖ 5-35kV Padmount and Submersible Vacuum Switchgear

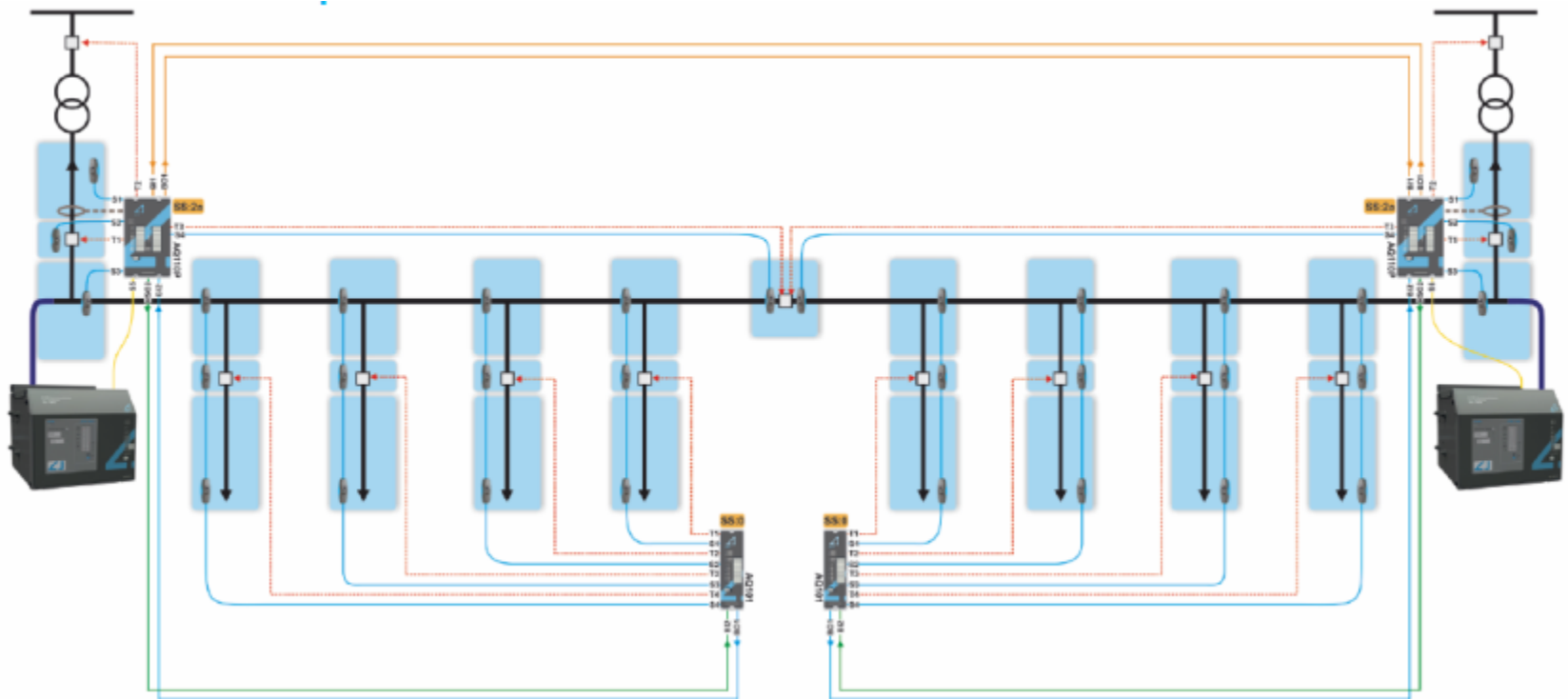


Grid Smart. Grid Tough.



# • Arcteq Arc Flash Quenching Systems **TECH 4**

- **ELIMINATES** the need for all arc-rated PPE clothing.
- *Why “redirect” or “vent” when you can ELIMINATE?*
- The ultimate solution for mitigating arc flash hazards.
- Minimizes damage to critical equipment assets.
- Meets IEEE C37.20.7-2007 Arc Resistant Switchgear requirements.
- Protects both switchgear and downstream assets such as MCCs.
- Guaranteed low-voltage arc quenching in 6 milliseconds.
- Guaranteed medium-voltage (up to 15 kV) arc quenching in 6 milliseconds.
- Less than 1.2 calories per cm<sup>2</sup> incident energy at the Working Distance.
- Available in both new and retrofit applications – UL Listed.

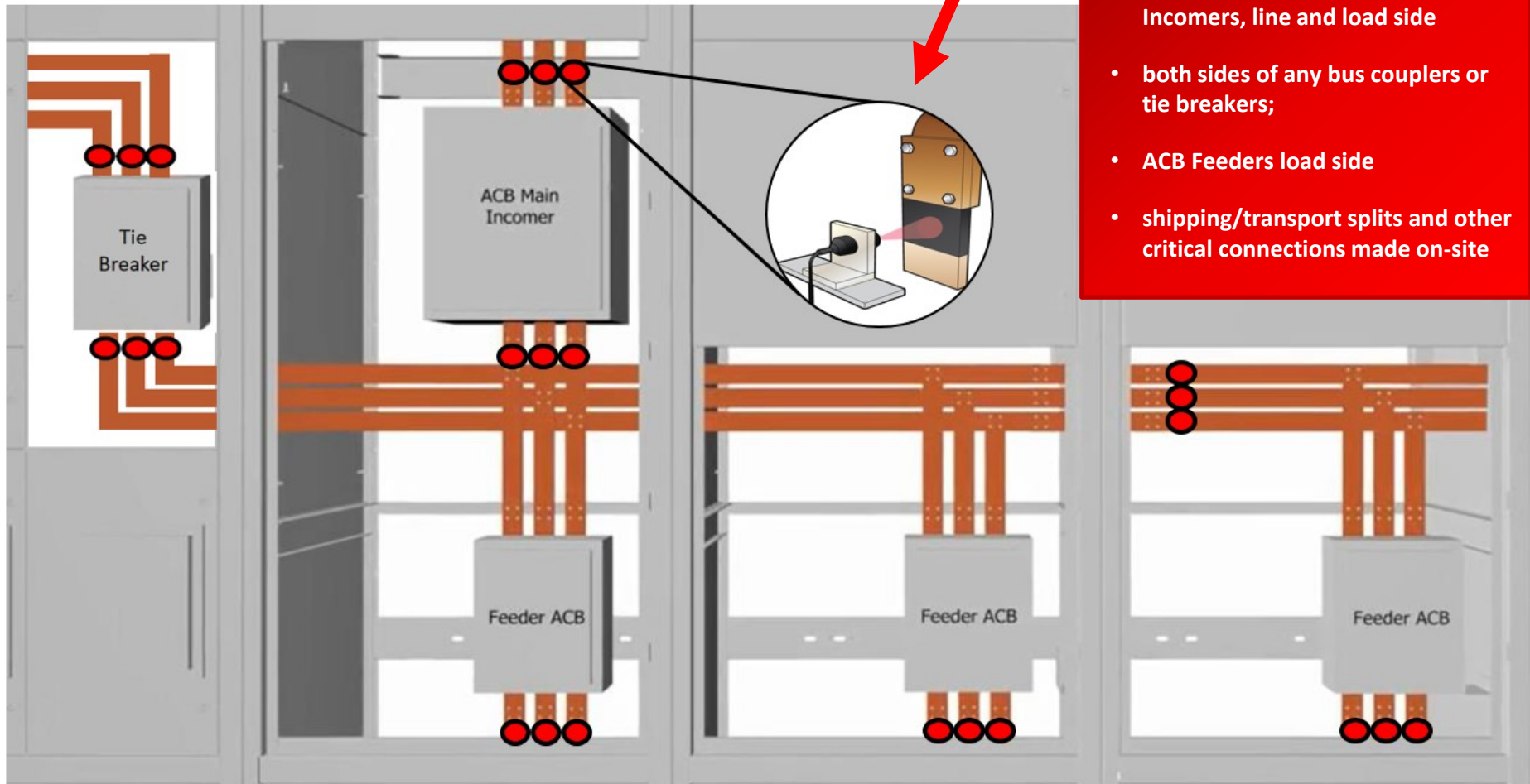


# Exertherm 24x7 Thermal Monitoring



## MV, LV, MCC Switchgear and Transformers: IR

We also can  
monitor Cables



### Busbar Joints

- IR Sensors monitor ACB Main Incomers, line and load side
- both sides of any bus couplers or tie breakers;
- ACB Feeders load side
- shipping/transport splits and other critical connections made on-site



# TECHNIBUS

## METAL ENCLOSED BUS SOLUTIONS



Segregated and Non-Segregated Bus



Iso-Phase Bus

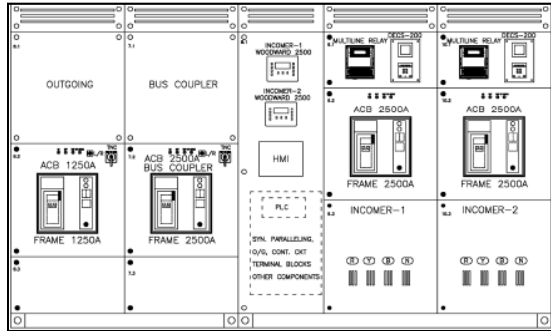
Advanced Systems –  
Precision Fabrication  
and More



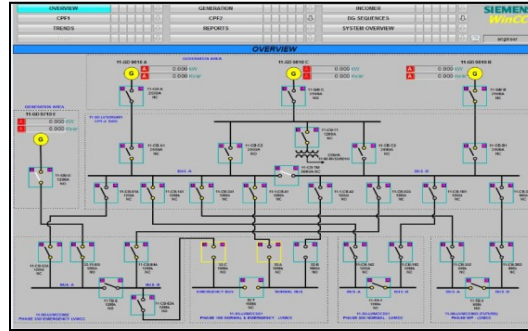
Bus Bar Fabrication

- **Field Testing and Site Maintenance Services**
  - Scheduled testing and maintenance services for electrical systems
  - Installation, start-up and commissioning of new equipment
  - Protective relaying, variable frequency drives and PLC's
  - Field and site testing of motors, motor contactors and starters
  - Relay Upgrades
- **Engineering and Design Engineering Services**
  - Substation and distribution system design, upgrades and additions
  - System load studies and protective relaying coordination studies, NFPA70E Arc Flash Analysis
  - Electrical inspections to determine compliance with codes and standards
    - Equipment failure forensics/arc flash hazard studies
- **In-Shop Remanufacturing Services**

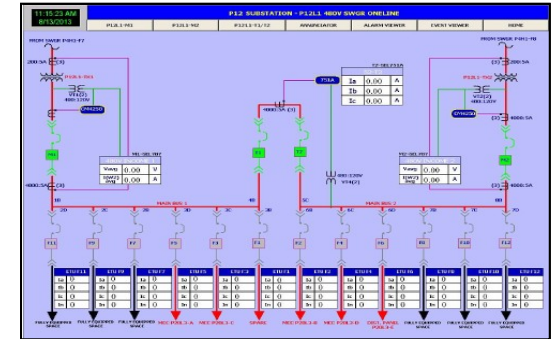




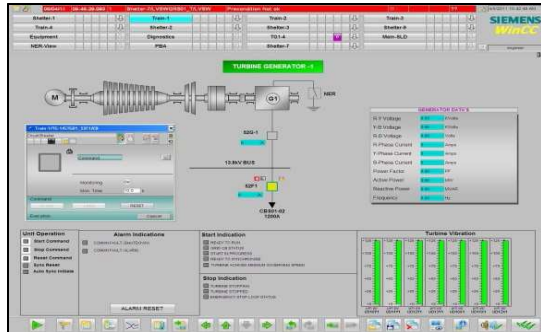
**LV & MV paralleling switchgear.**  
Built to (UL / ANSI & IEC) standards.



**Power management system**  
Generator based prime power ,back up.



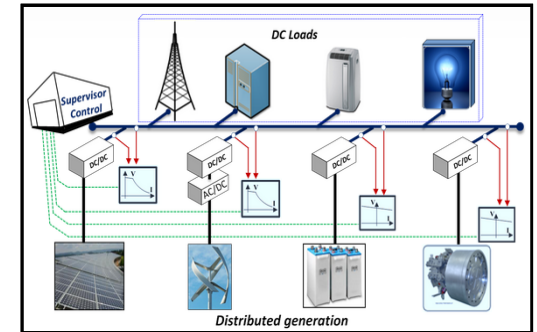
**Switchgear automation - SCADA**  
main-tie-main, main-tie-generator



**Turbine control, generator protection**  
Power plant - distributed control



**Remote generator/asset monitoring**  
Geo Fence, RTU, remote control, 3G



**Microgrid solutions**  
AC, DC, DC Storage solutions



# SIBA Fuses





**Control Transformer with F2  
primary fusing**



**F4 secondary fuse block  
holder on SNC Control  
Transformer allows easy  
factory or field installation of  
fuses/contactors**



**Control Transformer Base  
Unit**

### **Transformer Standard Voltages**

- Primary: 220 x 440, 230 x 460, 240 x 480 – Secondary: 110/115/120 – 50/60 Hz
- Primary: 440/220/200, 460/230/208, 480/240 – Secondary: 110/23, 115/24, 120/25 – 50/60 Hz
- Primary: 460/230/208, 480/240, 440/220/200 – Secondary: 115/120/110 – 50/60 Hz
- Primary: 550/575/600 – Secondary: 110/115/120 – 50/60 Hz
- Primary: 120/240 – Secondary: 24 – 50/60 Hz

ENGINEERING  
TOMORROW

*Danfoss*

6 YEAR

Breadth and depth in **expert products**

DrivePro<sup>®</sup> Extended  
Warranty

**VLT<sup>®</sup>**



**VACON<sup>®</sup>**



# Comsys

## Practical Solution to Eliminate Harmonics

### ADF Product Range 208-690Volts





# Mangoldt Products that Improve VFD System Power Quality



"5 in 1" Line/Load Reactors



Input Harmonic Filters



PolyGap<sup>®</sup> Sinewave Filters and L-C-L Filters for AFE's



to 690Vac

Reactor Technology at Its Best

**MANGOLDT**



# Pfannenberg

## ELECTRO-TECHNOLOGY FOR INDUSTRY



**FILTERFANS®**  
Pfannenberg  
Filterfans® and  
accessories. Trust in  
the Original.

**FILTERFANS 4.0™**

**OUTDOOR FILTERFANS**

**EXHAUST FILTERS**

**DATAWIND FILTERFANS**

**SLIM LINE FILTERFANS®**

**TOP MOUNT FILTERFANS®**

**EMC FILTERFANS®**

**FILTI**

### COMPACT CHILLERS

Compact, packaged and ready to use;  
requires only piping & power to install a  
solution for process cooling.



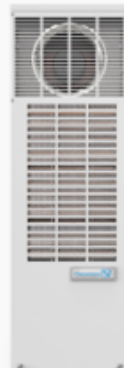
**CCE SERIES COMPACT  
CHILLERS**



### AIR / AIR HEAT EXCHANGERS

This method of cooling  
is Ideal for when you  
need to cool  
electronics but the  
ambient air is  
contaminated by dust,  
liquid or gas.

**PKS SERIES AIR TO AIR HEAT  
EXCHANGERS**



**COOLING UNITS**  
Enclosure Cooling  
Units (Air  
Conditioners) are ideal  
for keeping electronics  
cool high ambient  
conditions

**DTS SERIES COOLING UNITS  
(Side Mount Design)**



**AIR / WATER  
HEAT  
EXCHANGERS**  
When the ambient air  
temperature is high &  
contaminated by dust,  
liquid or gas, this  
method of cooling is  
ideal. Use with  
existing water or one  
of our Chillers.

**PWS 3000 SERIES AIR TO  
WATER HEAT EXCHANGERS**

**PWS 7000 SERIES AIR TO  
WATER HEAT EXCHANGERS**



**HEATERS,  
THERMOSTATS &  
HYGROSTATS**  
Maintain constant  
temperature, improve  
thermal management  
efficiency & reduce  
condensation.

**HEATERS**

**THERMOSTATS**

**HYGROSTATS**

### LARGE PACKAGED CHILLERS

Our larger packaged chillers are available  
in sizes from just over 1 ton to over 30 tons



**EB SERIES LARGE PACKAGED  
CHILLERS**

### ECO CHILLERS

The ECO Chillers take advantage of the  
inverter technology ensuring a direct  
response to cooling needs.



**EB SERIES ECO CHILLERS**

### WATER/WATER HEAT EXCHANGERS

Designed with durable components to  
ensure the effectiveness and longevity of  
the critical cooling process.

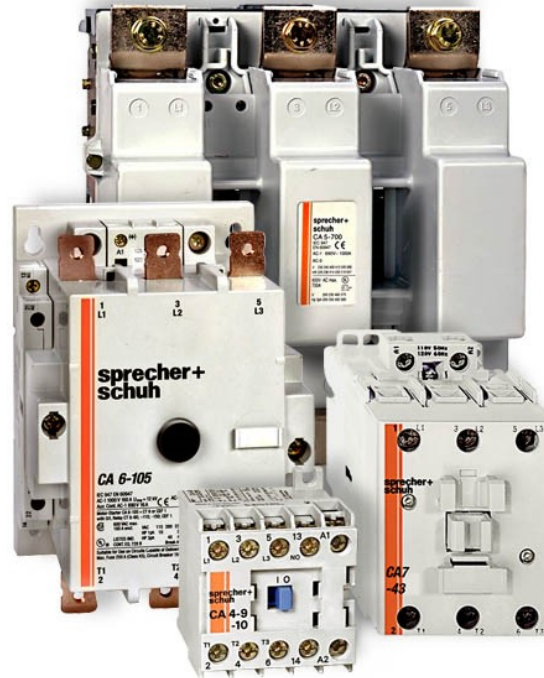


**PWW SERIES WATER/WATER  
HEAT EXCHANGERS**

## Manual Motor Control



## Contactors



## Softstarters



## Overloads



## Disconnects





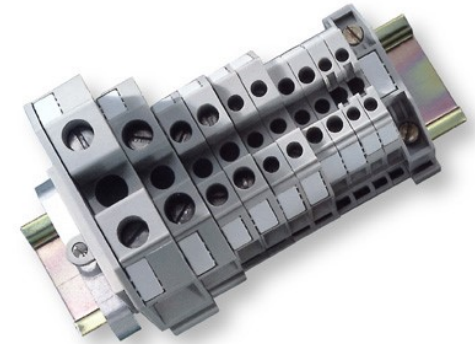
## Auer Signal Lights



## Timing Relays



## Terminal Blocks



## Mini Circuit Breakers



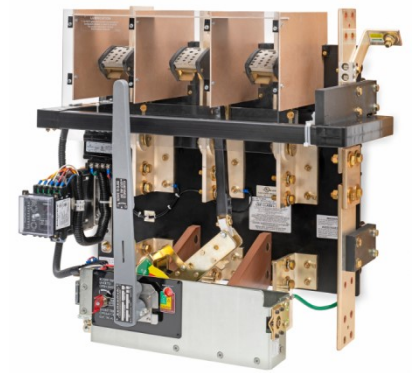
## Pushbuttons







Switching and Protection



Boltswitch  
Bolted Pressure Switches



Energy Storage



Dynapar offers a wide range of NorthStar, Hengstler and Dynapar magnetic and optical encoders, many of them available with dual sensor output for maximum uptime.



*NorthStar RIM Tach  
8500 NexGen (RT8)*



*HD35R Encoder*



*HS35R Encoder*



*AC58  
Encoder*

## Timers and Relays



**SOLID STATE  
CURRENT SENSOR**



**TRUE OFF DELAY  
CUBE RELAY TIMER**



**HVAC CONTROL**



**SOLID STATE TIMER**



**CUSTOM  
CURRENT SENSOR**



**CUSTOM CONTROL**



**HEAT PUMP CONTROL**



**MICROPROCESSOR  
RECYCLE TIMER**





## PUTTING **POWER** TO WORK in Water Irrigation Systems



**Peltec 102 Recycle Timer**  
Universal voltage repeat cycle in  
rail timer



### UNIVERSAL VOLTAGE RELAY TIMERS & DIGITAL TIMERS

Available in a wide variety of  
timing modes.



### VOLTAGE & PHASE MONITORING CONTROLS

Phase monitoring available from  
208 to 575 Volts. Voltage  
monitoring from 24 to 276 Volts.



### OVER / UNDER CURRENT SENSORS

For AC sensing from .1 to 20  
amps.



### UNIVERSAL VOLTAGE POWER RELAYS

Available in 8 amp or 16 amp  
outputs in 3PDT or SPDT.

