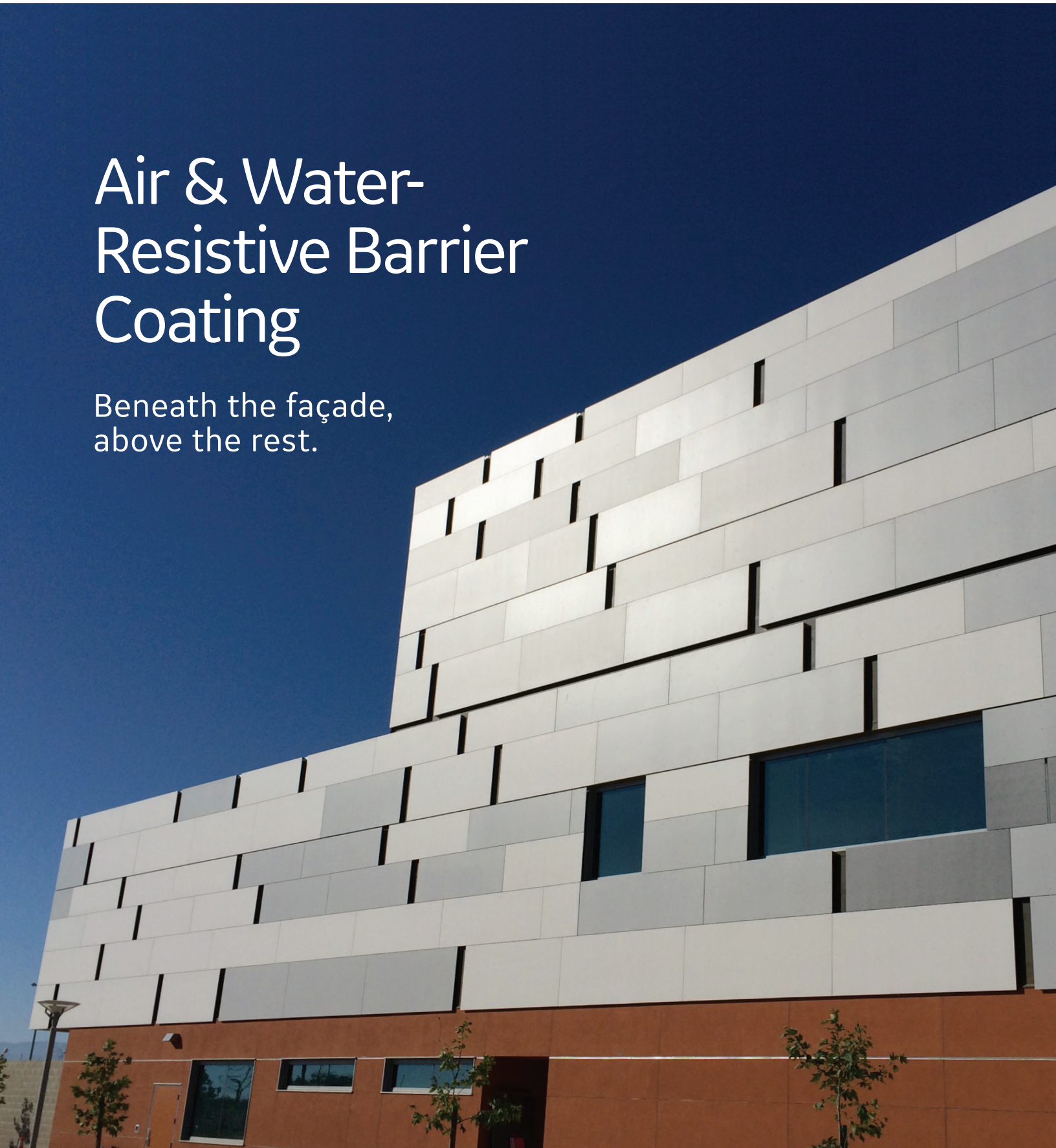




Silicones

# Air & Water-Resistive Barrier Coating

Beneath the façade,  
above the rest.



# 100% silicone, 100% confidence.

We know that building effective air barrier systems today involves big challenges. Battling moisture intrusion. Achieving compliance with complex codes. Meeting ambitious sustainability goals. Designing façades that resist fire and flame spread to help keep occupants safe. And much more.

For today's complex building needs, trust in the power of 100% silicone. Rely on 60 years of experience. Turn to GE Silicones Air & Water-Resistive Barrier (AWB) solutions.

For your next project, trust in the leading benefits of GE Silicones AWB Solutions.



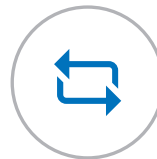
**WARRANTY**  
protects the building and  
your reputation



**UV RESISTANT**  
during construction  
and after



**COLD WEATHER  
APPLICATION**  
in temperatures as  
low as 0°F



**SEAMLESS COVERAGE**  
between building  
materials when paired  
with GE Silicones sealants



**RAIN READY**  
in as little as  
30 minutes



Achieved 70-day timeline  
for completion

Photo courtesy of University of British Columbia



## Tight deadline. Met.



**Brock Commons—Tallwood House, University of British Columbia**  
Vancouver, British Columbia, Canada

GE Elemax™ 2600 Coating

This mass timber residence building needed to be completed before students arrived on campus. The quick drying time of GE Elemax 2600 helped the wall fabricator move production quickly and finish the project in eight weeks.

NOTE: GE Silicones are not endorsed by or affiliated with the owner(s) of the Brock Commons Student Residence.



# One system for seamless protection.

It only takes one tear or unsealed connection to compromise the entire system's integrity. To help ensure continuity, our fully compatible 100% silicone GE Elemax™ AWB system works seamlessly, allowing its components to create a continuous seal around joints, seams, penetrations, and more. System elements can be applied in any sequence—and can adhere in one coat without a primer to most construction materials.



## Elemax 2600 Coating

A single coat of this non-water based silicone coating forms a vapor permeable and airtight membrane to help control moisture and humidity inside your building—supporting air quality and energy efficiency for years.



## GE Elemax 5000 Liquid Flashing

Securely seal critical junctures such as joints, gaps, seams, fasteners, rough openings, and transitions with this liquid-applied flashing. The one-part formula forms a durable barrier to prevent air and water leaks and resist UV rays, even after decades of exposure.

## Companion Products



GE Elemax SS Flashing



GE RF100 Reinforcing Fabric



UltraSpan™ UST2200 Transition Sheet



UltraSpan UST/USM Pre-Cured Silicone Rubber Accessories



## Medium build, high performance.

GE Elemax™ 2600 AWB coating is a medium build solution that can offer three to four times the coverage of other products. Due to its higher solids content, it can cover approximately 60–80 sq. ft./gallon in one coat.<sup>1</sup> At only 19 mils (WFT)/17 mils dry (DFT) our AWB coating can provide an excellent seal over every part of the surface to allow significant material, time, and labor savings.

<sup>1</sup>Coverage depends on substrate conditions (temperature and moisture), substrate porosity, and uniformity of application.

# Design resiliency into your next project. Choose silicone.

	<b>Elemax™ 100% Silicone AWB Coating</b>	Water-based Silicone	Hybrid	Typical Acrylic/ Latex (water- based)
<b>Self sealing</b> over fasteners per ASTM D1970 industry standard	✓	✓	✓	✓
<b>Fire resistant</b> according to NFPA 285 standard	✓	✓	✓	✓
<b>Low VOC<sup>1</sup> formula</b> to meet industry requirements	✓	✓	✓	✓
<b>Vapor permeable</b> to stand up to the elements	✓	✓	✓	✓
<b>Permanently elastomeric</b> remains flexible for the life of the building	✓	✓	✓	✗
<b>Primerless adhesion</b> to most common substrates	✓	✓	✓	✓
<b>Rain ready</b> in 30 minutes or less	✓	✗	✓	✗
<b>Wide service temperature range</b> from -40°F to 300°F (-40°C to 149°C)	✓	✓	✓	✗
<b>Fast cure</b> properties to keep projects moving	✓	✓	✓	✗
<b>One-coat application</b> to simplify the job	✓	✓	✓	✗
<b>No limit to UV exposure</b> for protection during and after construction	✓	✓	✗	✗
<b>Warranty up to 20 years</b> that covers the entire product family	✓	✓	✗	✗
<b>Wide application temperature range</b> from 0°F to 150°F (-18°C to 66°C)	✓	✗	✗	✗

<sup>1</sup>Based on VOC content of less than 50 g/L, as provided for in the 06/2018 US EPA (40 CFR 59) and the 02/2016 South Coast AQMD (Rule 1113) VOC emission standards for architectural coatings.

Note: Based on available manufacturer performance claims and internal testing.

# We're behind you, all the way.

From project inception to completion, the GE Silicones coatings team can help simplify project planning, ensure system integrity, and lower your risk. With decades of experience on some of the world's most innovative structures, the team provides a wealth of knowledge and support to help deliver results.

## Our technical assistance includes:



### Project Review

**Review project information**  
to assist with proper product selection based on usage criteria, specifications, and customer needs.



### Drawing Review

**Review drawings and details**  
to address project-specific terminations, transitions, and penetrations.



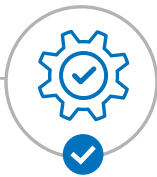
### Code Compliance

As confirmed by our International Code Council® Evaluation Report:

#### **GE Elemax™ system**

International Building Code  
International Residential Code  
International Energy Conservation Code  
California Green Building Standards  
International Green Construction Code  
National Green Building Standard

#### **GE Elemax 2600 coating**



### Onsite Testing

**Assist with substrate testing**  
to be used for adhesion or compatibility to other building materials, if necessary.



### Onsite Training

**Train onsite with contractors**  
when starting a project to help ensure proper installation.



### Project Warranty

**Offer extended warranties**  
up to 20 years.

Contact us at

**[gesilicones.com](https://www.gesilicones.com)**



The GE Silicones family of coating and sealant products are engineered with excellence to support the ever-inventive, increasingly demanding architecture found around the world.



#### **Air & Water-Resistive Barrier Coating**

Beneath the façade, above the rest.



#### **Architectural Coatings**

Protect and enhance the building surface.



#### **Roof Coatings**

Strong, lasting roof performance.



#### **Insulating Glass Sealants**

Seal in lasting performance.



#### **Residential Glazing Sealants**

Simple, snug, and secure.



#### **Structural Silicone Glazing Sealants**

The trusted bond that lets you explore new boundaries of building design.



#### **Weatherseal Sealants**

For strong, resilient building joints.

## **Coat & Seal. Protect & Restore.**

GE Silicones are a family of coatings and sealants used to weatherproof, insulate, and strengthen every element of the building envelope. Roofs. Façades. Glazing. And more. We put advanced and trusted innovation to work on your project. Some of our 100% silicone formulas have been part of the world's most ambitious projects. Astronaut boots on the moon. Soaring glass skyscrapers. Structures that have remained snug and secure since the 1970s. And, we make it easy. GE Silicones building envelope solutions are simple to install, and offer resilient, long-lasting protection.

## Get the results you expect for your building envelope.

**[gesilicones.com](https://www.gesilicones.com)**

THE MATERIALS, PRODUCTS, AND SERVICES OF MOMENTIVE PERFORMANCE MATERIALS INC. AND ITS SUBSIDIARIES AND AFFILIATES (COLLECTIVELY "SUPPLIER"), ARE SOLD SUBJECT TO SUPPLIER'S STANDARD CONDITIONS OF SALE, WHICH ARE INCLUDED IN THE APPLICABLE DISTRIBUTOR OR OTHER SALES AGREEMENT, PRINTED ON THE BACK OF ORDER ACKNOWLEDGMENTS AND INVOICES, AND AVAILABLE UPON REQUEST. ALTHOUGH ANY INFORMATION, RECOMMENDATIONS, OR ADVICE CONTAINED HEREIN IS GIVEN IN GOOD FAITH, SUPPLIER MAKES NO WARRANTY OR GUARANTEE, EXPRESS OR IMPLIED, (i) THAT THE RESULTS DESCRIBED HEREIN WILL BE OBTAINED UNDER END-USE CONDITIONS, OR (ii) AS TO THE EFFECTIVENESS OR SAFETY OF ANY DESIGN INCORPORATING ITS PRODUCTS, MATERIALS, SERVICES, RECOMMENDATIONS, OR ADVICE. EXCEPT AS PROVIDED IN SUPPLIER'S STANDARD CONDITIONS OF SALE, SUPPLIER AND ITS REPRESENTATIVES SHALL IN NO EVENT BE RESPONSIBLE FOR ANY LOSS RESULTING FROM ANY USE OF ITS MATERIALS, PRODUCTS, OR SERVICES DESCRIBED HEREIN. Each user bears full responsibility for making its own determination as to the suitability of Supplier's materials, services, recommendations, or advice for its own particular use. Each user must identify and perform all tests and analyses necessary to assure that its finished parts incorporating Supplier's products, materials, or services will be safe and suitable for or waive any provision of Supplier's standard Conditions of Sale or this Disclaimer, unless any such modification is specifically agreed to in a writing signed by Supplier. No statement contained herein concerning a possible or suggested use of any material, product, service, or design is intended, or should be construed, to grant any license under any patent or other intellectual property right of Supplier covering such use or design, or as a recommendation for the use of such material, product, service, or design in the infringement of any patent or other intellectual property right.

GE is a registered trademark of General Electric Company and is used under license by Momentive Performance Materials Inc.

™Elemax and UltraSpan are trademarks of Momentive Performance Materials Inc.

Copyright 2022 Momentive Performance Materials Inc. All rights reserved.