

BIG EVENTS **MADE EASY** VENUE BROCHURE



**HEARTFELT
ARENA**



ABOUT HEARTFELT ARENA

Heartfelt Arena is an Events Venue that understands the value of your time. We offer a variety of in-house services to allow you more time to focus on what is important to you. Our venues are designed around simplifying large events, and are perfect for:

- Expos & Exhibitions
- Gala Dinners
- Year-End Functions
- Conferences
- Sporting Events
- Music Concerts
- Award Shows
- TV Productions

**LEVEL 2
B-BBEE
CONTRIBUTOR**



Tourism Grading Council
of South Africa



BIG EVENTS MADE EASY

Contents

| | |
|---------------------------|----|
| Main Arena..... | 1 |
| Floor Plan..... | 5 |
| Seating Layouts..... | 6 |
| Our Venue Grounds | 7 |
| Parking..... | 8 |
| Additional Services | 9 |
| Theatre | 11 |
| Seating Layouts..... | 14 |
| Conference Room | 15 |
| VIP Lounge..... | 17 |
| The Studio..... | 19 |
| VIP Suite | 21 |
| Rehearsal Studio..... | 23 |



Main Arena



4 Ablution Blocks which are monitored by our cleaning team



Full Venue Back-up Power is on standby with our generator



Holding Rooms are available to book for performing artists & speakers



2 Tier Stage which includes two backstage rooms & basic stage lighting



High Roof with ample rigging points (11m at the lowest, 15m at the highest)



Advanced 3-Phase Power distribution network to cater for your event needs

UP TO

4500

CINEMA STYLE

UP TO

1800

BANQUET STYLE

UP TO

8000

STANDING



3500m² of Versatile Space

Perfect for a Multitude of Different Events



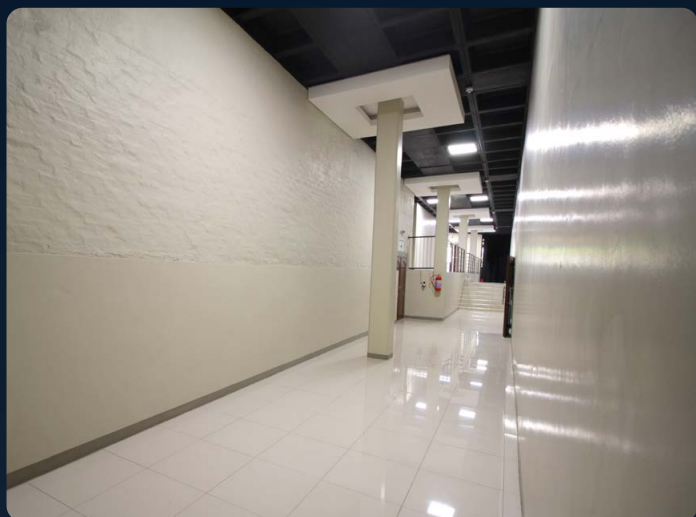
Perfect for Your Event

Variety of In-House Services Available for Turnkey Solutions





Our **main stage** is a two level platform, which is well equipped with 32 and 63 amp connectors. The stage hosts two backstage rooms, two 4m x 6m **projector screens**, and **FOH stage lighting**.



We have four main **ablution blocks** situated around the arena. Our cleaning staff will ensure that the facilities remain well kept throughout your event, with a detailed waste management system customised to your event



FLOOR PLAN



Main Arena



Theatre



Conference Room



VIP Lounge



Studio



VIP Suite



Rehearsal Studio



Holding Rooms

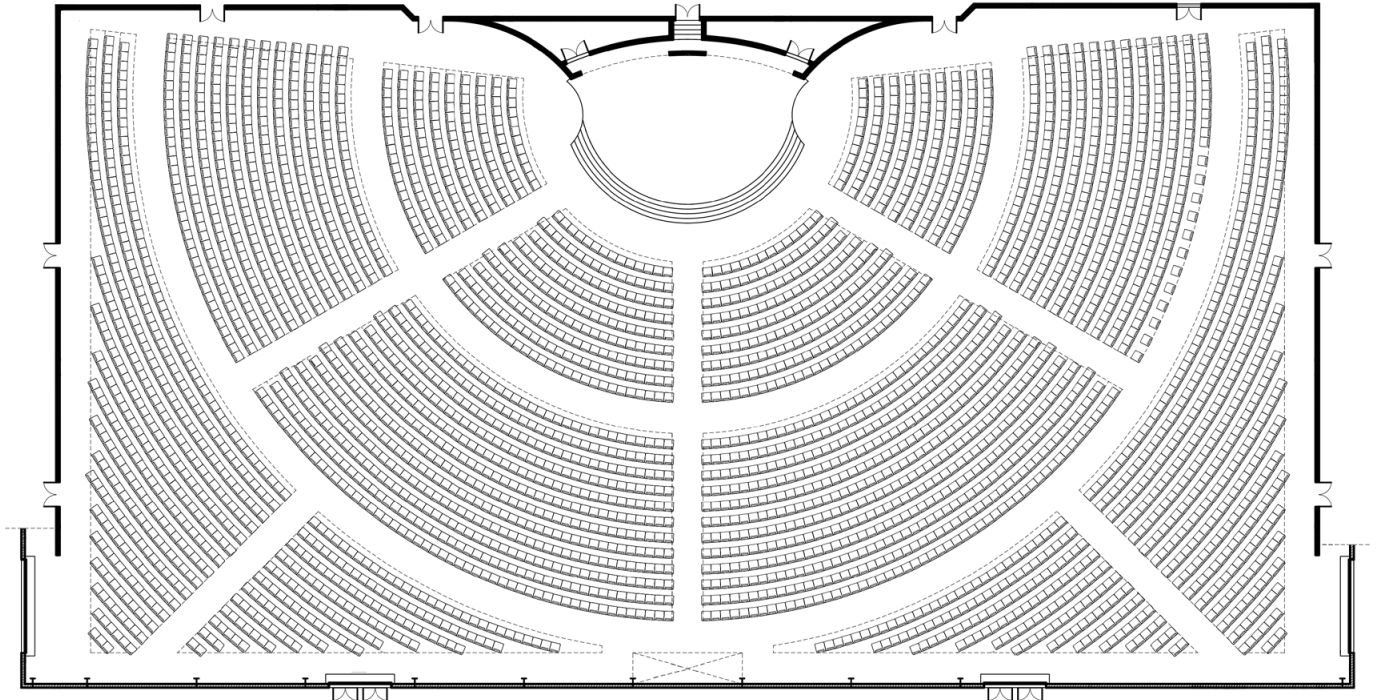


Theatre Backstage

SEATING LAYOUTS

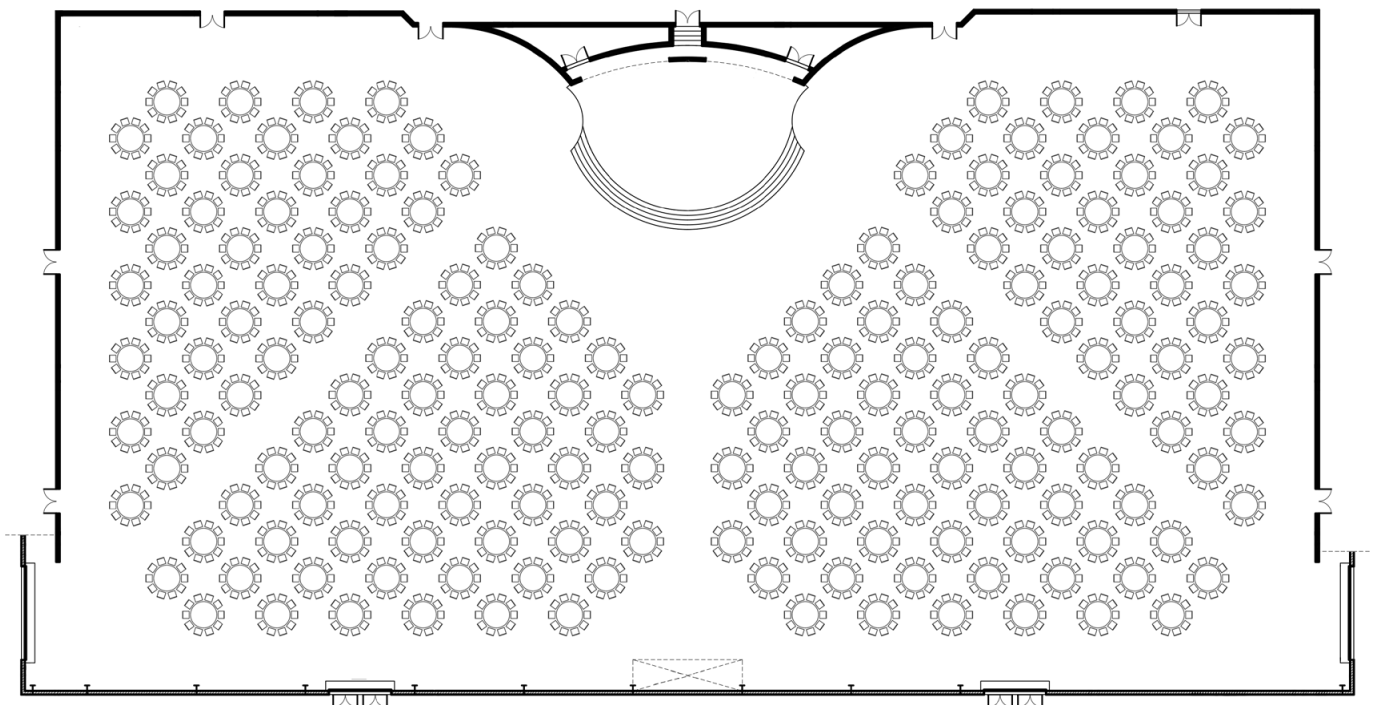
CINEMA STYLE

UP TO **4500 PAX**



BANQUET STYLE

UP TO **1800 PAX**



**Please note that these are suggested layouts, and can be customised according to your event needs.*

OUR VENUE GROUNDS



Our grounds provide up to **2300 Parking Bays** and are ideal for events that require additional space for outdoor activities. The premises are secured by access control fencing which assists security with control.



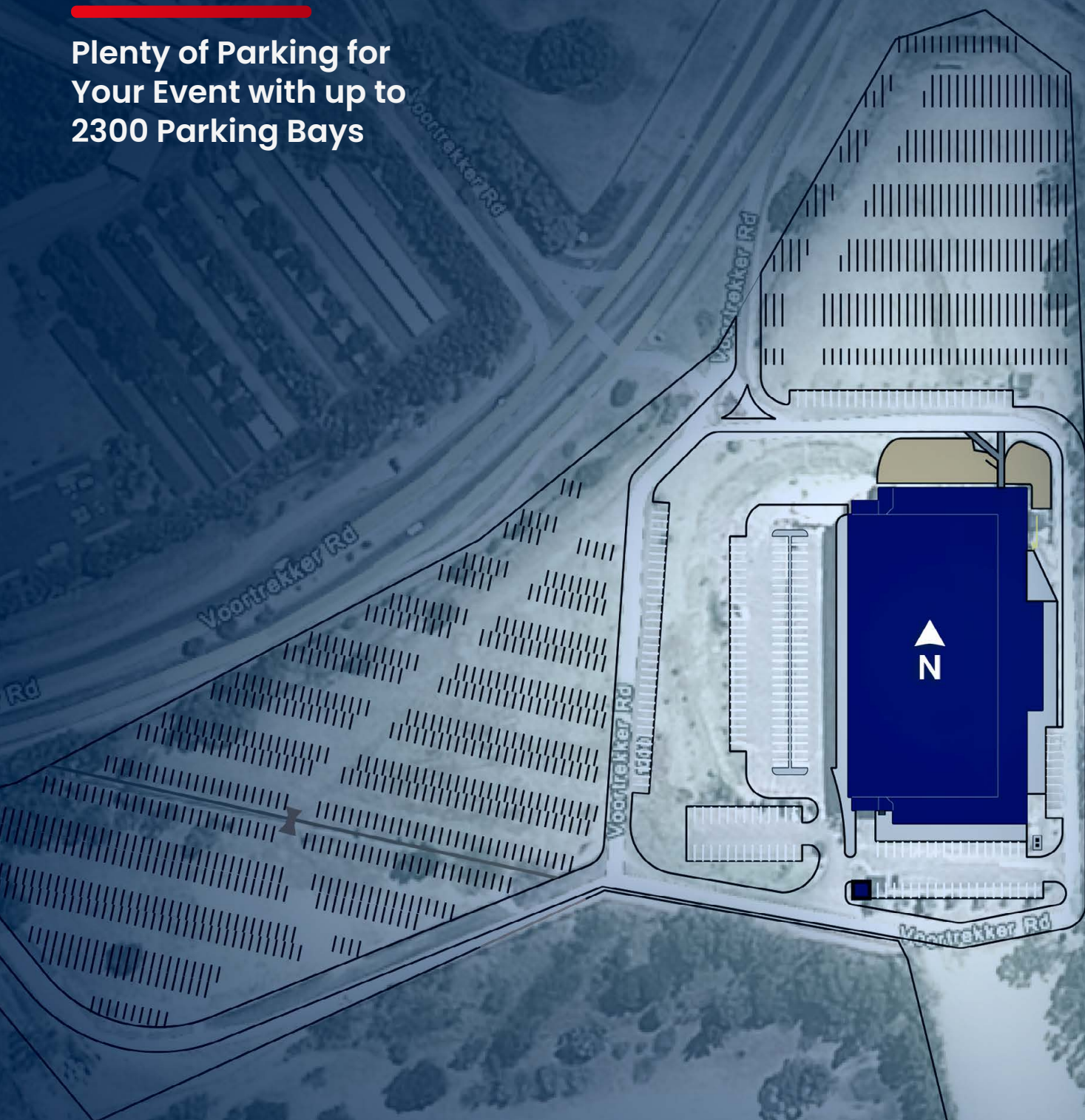
We have areas with **3-Phase Power** which can be utilised for food stalls to cater for your visitors.



There is plenty of space outside for activities to be setup.

PARKING

Plenty of Parking for
Your Event with up to
2300 Parking Bays



ADDITIONAL SERVICES

We value our clients and we know that you value your time, therefore we offer a variety of services to allow you more time to focus on what is important to you.

ALLOW THE **EXPERTS** TO ASSIST



CATERING SERVICES

We offer custom packages with tastings before your event to ensure a perfect menu.

- Coffee, Tea, Juice & Water stations
- Buffet & Plated Meals
 - Cocktail Platters
 - Pre-packed Meals
 - Bar Services
- Waiters & Runners
- Cutlery, Crockery & Glassware



SOUND, LIGHTING & AV

A large venue requires a competent and experienced technical crew to ensure a top quality production. The Heartfelt team can create a package to suit your exact requirements.



**Sound
Reinforcement**



Event Lighting



Audio Visual



Video Services



STAGE DESIGN

We understand that leaving a lasting impression on your guests is of the utmost importance.

That is why we offer a variety of stage designs that will integrate with your lighting setup and take your event to the next level.



DECOR & FURNITURE

We supply a wide variety of basic furniture and decor that can be provided as required.

From tables viewings to sample decor, our demo setups will help you with the look and feel of your event in planning.



MEDICS, SAFETY & SECURITY

We can handle everything relating to the safety of your event from the Tshwane JOC approval & safety officers, to the event security & medical services.

We will ensure your event is safe and runs smoothly.



Theatre

This Venue Includes:



Basic PA System



Projector & Screen (4m x 3m)



Basic Stage & Venue Lighting



A Large Stage (7m x 13m)



Air Conditioning



Chairs

UP TO
500
CINEMA STYLE

UP TO
250
BANQUET STYLE

An **All Inclusive** Event Solution





Fully Equipped & Air Conditioned Venue



Perfect for Your Event

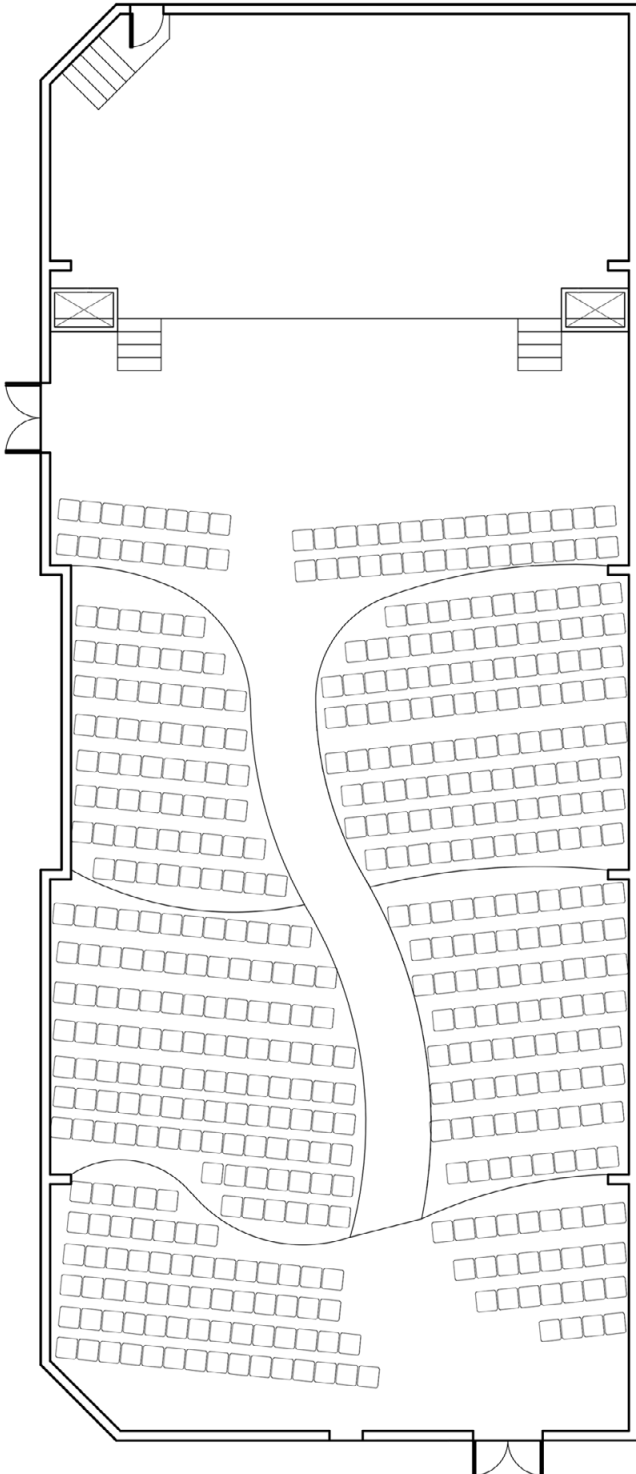
This Plug-And-Play Venue Makes Your Event Even Easier



SEATING LAYOUTS

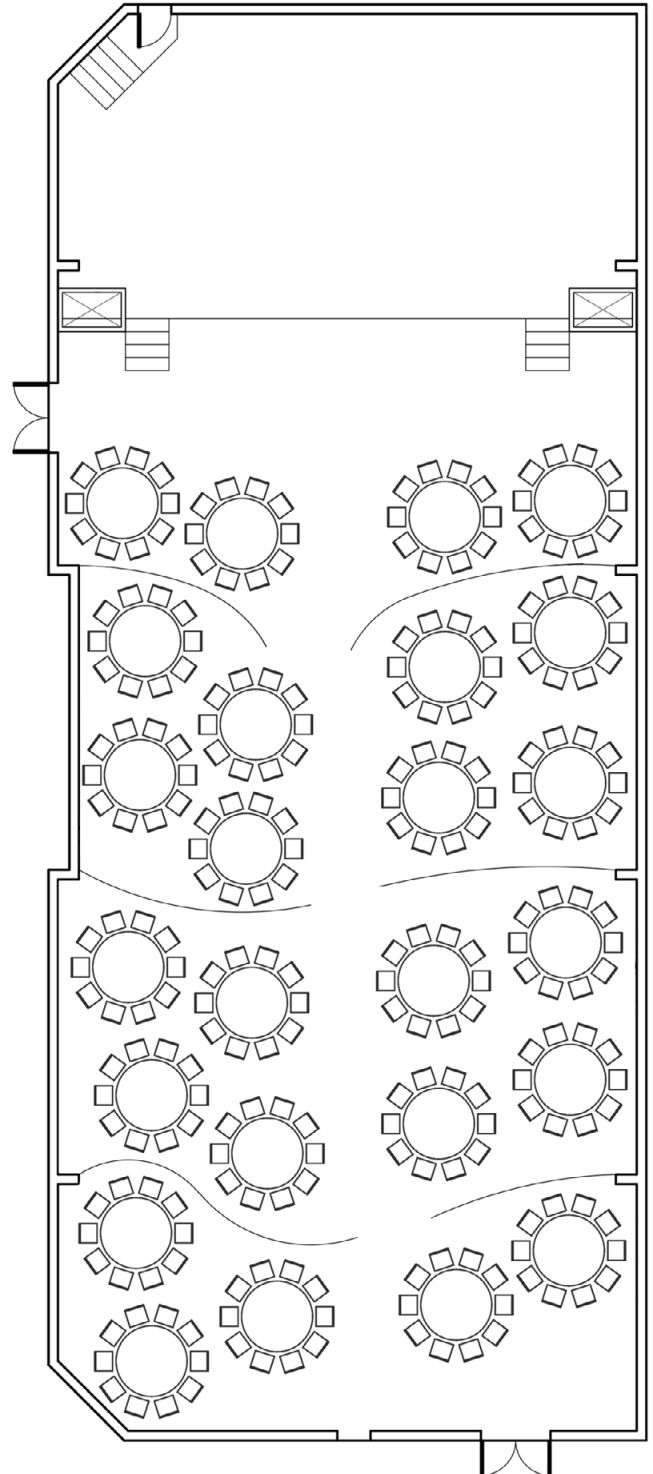
CINEMA STYLE

UP TO **500 PAX**



BANQUET STYLE

UP TO **250 PAX**



**Please note that these are suggested layouts, and can be customised according to your event needs.*



UP TO
200
CINEMA STYLE

UP TO
120
BANQUET STYLE

SUPPORTING VENUE

Conference Room

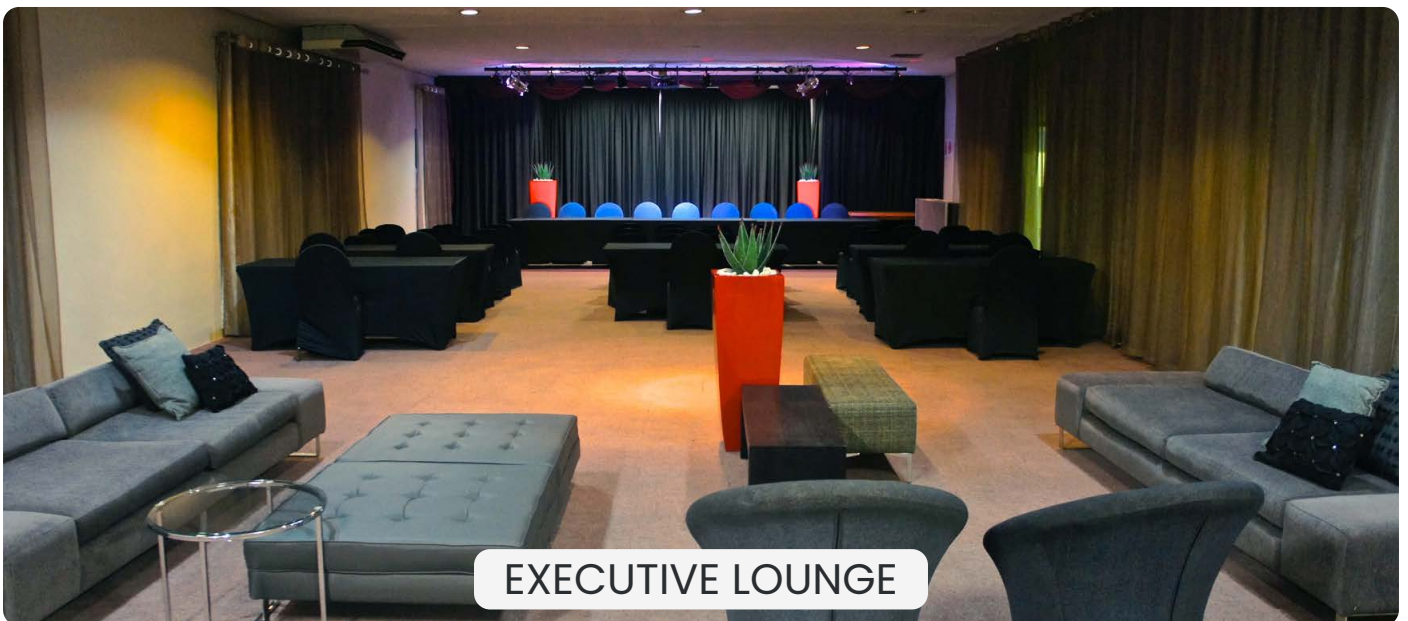
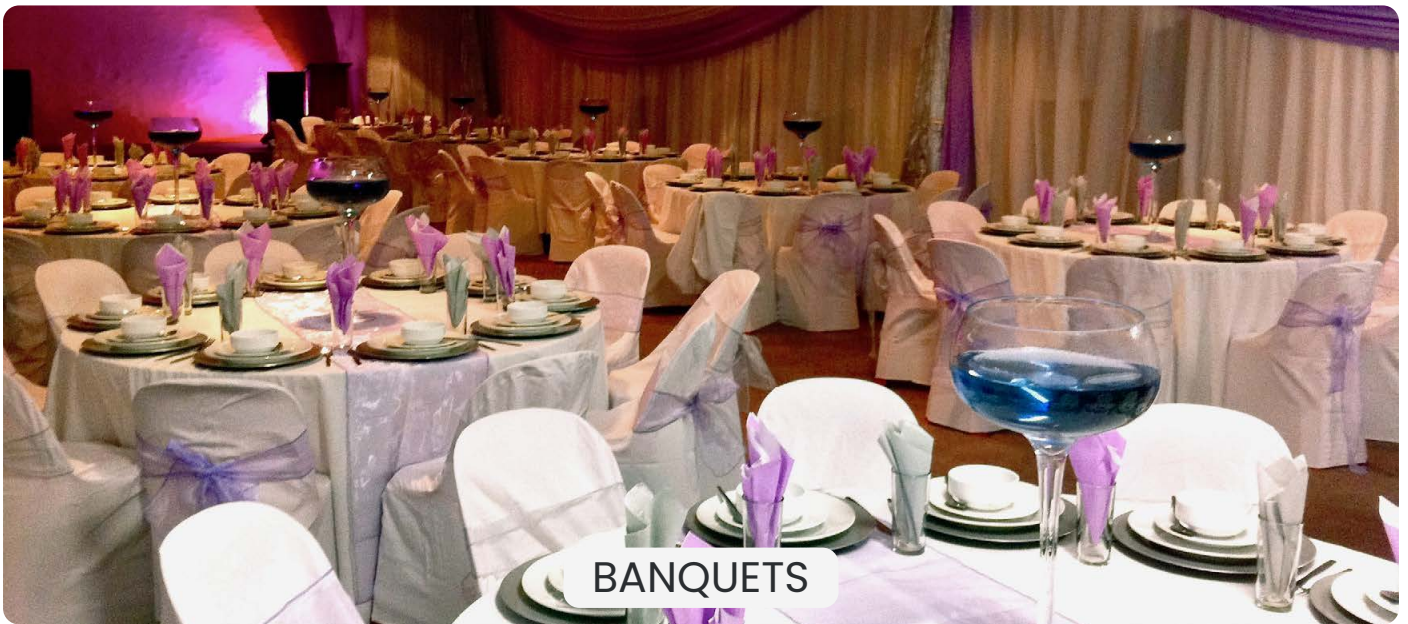
The Conference Room offers an ideal space for banquets and smaller sized conferences. This venue includes a satellite kitchen, air conditioning, and basic furniture.

This venue also includes a built-in stage and all conferencing equipment.



Perfect for Your Event

Versatile Venue Suitable for Conferences & Catering





UP TO
60
BANQUET STYLE

SUPPORTING VENUE

VIP Lounge

The VIP Lounge is ideal for hosting smaller groups of people. This venue is fitted with a serving bar and under-counter fridges to assist with catering requirements. Glass panels provide a clear view of the Main Arena which allows guests to be connected to the event.

Air conditioning, as well as the built-in fireplace, ensures a comfortable temperature is maintained.



VIP Venue

Our VIP Lounge is perfect for a variety of uses





80m²
AREA

SUPPORTING VENUE

The Studio

The Studio is best utilised as an artist holding room or base of operations. The venue is air conditioned and is situated on the ground floor within close proximity to both the Main Arena and Theatre stages.

**Please note that although this space can be used to record in, it is not a recording studio.*



Purpose-Built Holding Room

A Versatile Space to Support Your Event





SUPPORTING VENUE

VIP Suite

Our VIP Suite is an ideal green room for artists and guest speakers, and can be utilised as a changing room. The suite includes a lounge, dining area, two workspaces, fully equipped kitchen, dedicated changing room, and a private toilet with shower/bath for guests.

**Please note that this is not intended for overnight stays, but rather to host guests during long events as a place to rest and freshen up.*



Fully Furnished Suite

A Unique Workspace & VIP Area



FULLY EQUIPPED KITCHEN



LOUNGE & DINING AREA



CHANGE ROOM



110m²
AREA

SUPPORTING VENUE

Rehearsal Studio

The Rehearsal Studio is ideal for performing artists to rehearse their routines or warm-up before shows. It can also be used as an artist make-up and change room.



WHAT OUR CLIENTS HAVE TO SAY

**SUCCESS
RESOURCES**
YOUR LEARNING PARTNERS

"Excellent experience, friendly and professional staff that go out of their way to assist."

Sven Schafer
Success Resources

"Firstly, you all ROCK! From the way you have dealt with us to how you helped us resolve issues leading up to our event – you always made us feel welcome and you treated us with respect and kindness."

Irnest Kaplan
Vapecon



 **SAICA**
THE SOUTH AFRICAN INSTITUTE
OF CHARTERED ACCOUNTANTS

"The spirit filled, open attitude of the staff is infectious and assistance is given with a smile. Second to none in terms of service."

Thamsanqa Tshuma
SAICA

"Love this venue and the staff are awesome. The events manager goes out of her way to accommodate the client. We will definitely use Heartfelt again."

Dijonne du Preez
T-Systems

T - Systems -



CONTACT DETAILS

Office: 012 651 2251

Direct: 072 744 6245 or 064 983 4812

E-mail: events@heartfelt.co.za

PHYSICAL ADDRESS

1000 Voortrekker Road, Pretoria, 0143

www.HeartfeltArena.co.za

