

Alvadek





ABOUT US

Established as Air-Vent in 1954, AVAdek was founded in 1993 and is now known as the leader in manufacturing and installing aluminum architectural canopy systems. The foundation of our long-standing leadership lies in our team, made up of dedicated professionals who are committed to providing exceptional quality and service – on **every** project. From the design phase to well after installation, AVAdek's team is cultivating long-lasting relationships and delivering high-quality results.

With two offices in Houston and Dallas, we've provided exceptional solutions throughout the state of Texas and across the United States for the last 26 years. In 2017, AVAdek expanded outside of Texas and acquired Perfection Architectural Systems, headquartered in Orlando, FL.



ABOUT OUR PRODUCT

Each of our projects is custom-designed and fabricated using extruded aluminum materials to ensure outstanding durability capable of withstanding the most severe weather conditions. We have an unsurpassed array of aluminum walkway and trellis combinations, including a variety of profiles, shapes, and finishes, providing unique design flexibility for any project. These architectural structures primarily function to provide protection from the elements while complimenting the overall design of any building. Our products have been installed on schools, retail spaces, commercial buildings, warehouses, restaurants, and more! AVAdek prides itself on having the capabilities to bring brilliant concepts to life, and we love being challenged by the extraordinary. We are designers, manufacturers, and installers with the expertise to bring your architectural vision to reality.

TO ARCHITECTS WE PROVIDE

Design/Engineering Consulting
Detailed Drawings
Budget Analyses
Value Engineering

TO CONTRACTORS WE PROVIDE

Complete Bids Including Installation
Shop Drawings with Engineering Seal
Single Source Responsibility
Warranties

WALKWAY COVERS

Walkway covers by AVAdek not only provide protection and shade from outdoor elements but create an inviting building entrance before anyone has walked through the front door. Each of our custom projects are built to allow flexibility for various style and installation options. For concealed water flow, all walkway covers are equipped with an internal drainage system using beams, columns, and downspouts. Designed to withstand all conditions including snowdrift loading and hurricane force winds, these structures are composed of the highest quality extruded aluminum materials to ensure an overall uncompromised finished product.



Westwood ES, PBK Architects



Pine Shadows ES, Stantec



Hughes Landing, Gensler



Tegeler ES, Randall-Porterfield Architects



FMC Technologies, Gensler



Sugar Creek Baptist Church, Merriman Holt Powell Architects

Each year, our team completes over **600** custom projects for retail spaces, schools, hotels, hospitals, & office buildings.



Opportunity Awareness Center, PBK Architects



Pinecroft Center III, Browne Penland McGregor Stephens Architects



Valley Oaks ES, PBK Architects



Gateway Community



Creekside Surgery Center, Browne McGregor Architects



ENTRY CANOPIES

Ideal for commercial and retail entrances, adding an entry canopy can create a lasting first impression. A wide range of design capabilities allows the finished product to perfectly blend with any storefront or commercial building. Functional, low-maintenance, and aesthetically pleasing – an AVAdek entry canopy is a key element, maximizing your usable space and enhancing your entryway.



Church, Levinson Alcoser Associates



Remington College, Browne Penland McGregor Stephens Architects



Town Centre One, Kirksey



Himalaya Herbal Healthcare, Kirksey



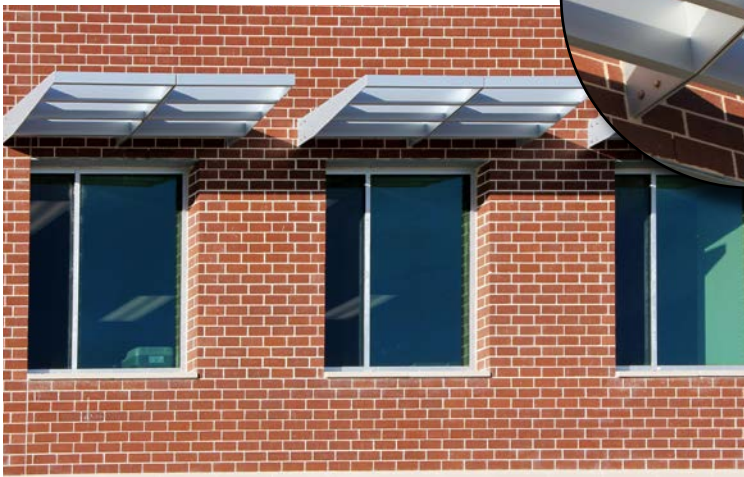
Fairmont Center, CDA Architects



OakBend Medical Group, Seeberger Architecture



Northwinds Construction, Harry Gendel Architects



Shadow Creek HS, Stantec



Woodlands Fire Station, Joiner Architects





San Jacinto College, Dansby & Miller AIA Architects



Walgreens, Identity Architects

SUNSHADES

Sunshades have become an increasingly desirable option given that they not only add to the architectural appeal of a building, but effectively manages heat and glare throughout the day. Sunshades block sunlight and heat gain while still letting in natural light, allowing for significant energy savings, especially in warmer climates. Our exterior sun control devices are the solution to reducing energy costs while being low-maintenance and a cost-efficient way to keep your office shaded and cool.



San Jacinto ES, Cre8



League City EMS, Randall-Porterfield Architects

TRELLIS CANOPIES

Aluminum trellis structures are the perfect addition to an outdoor area in need of shading, or an entryway that needs a distinctive, architectural element. AVAdek's wide range of design capabilities allows us to go above and beyond to create your custom trellis exactly how it was envisioned.



The Emery/Weiner School, Kirksey



Market Street, 505 Design



TAMU Park West, PGAL



Hermann Park, Bohlin Cywinski Jackson



Nassau Baytown Square, Kudela & Weinheimer

UNIQUE PROJECTS



Lewis ES, Molina Walker Architects



Housman ES, IBI Group Architects



HCC West Loop, Kirksey



Kirby Collections, Kirksey



Second Baptist Church, Kirksey

COMPONENTS

All components are 6063-T6, 6005-T5, & 6061-T6 extruded aluminum alloy (except c-fascia & composite fascia).

Deck

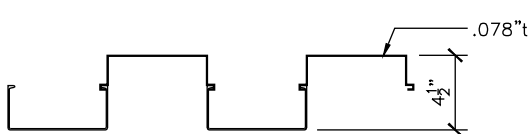
2 3/4" DECK



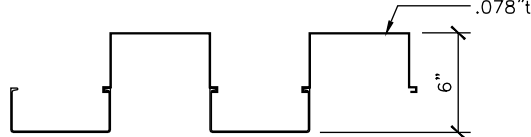
3 1/2" DECK



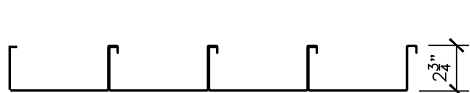
4 1/2" DECK



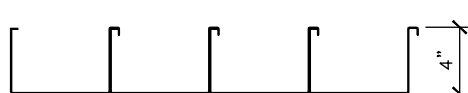
6" DECK



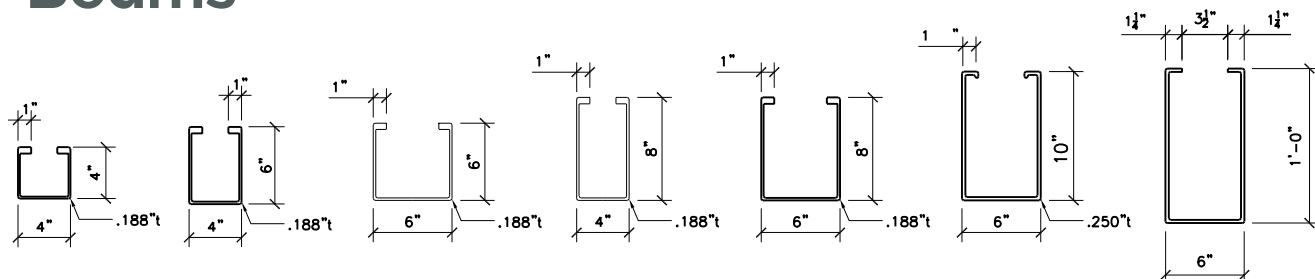
2 3/4" x 6" SELF-MATING DECK



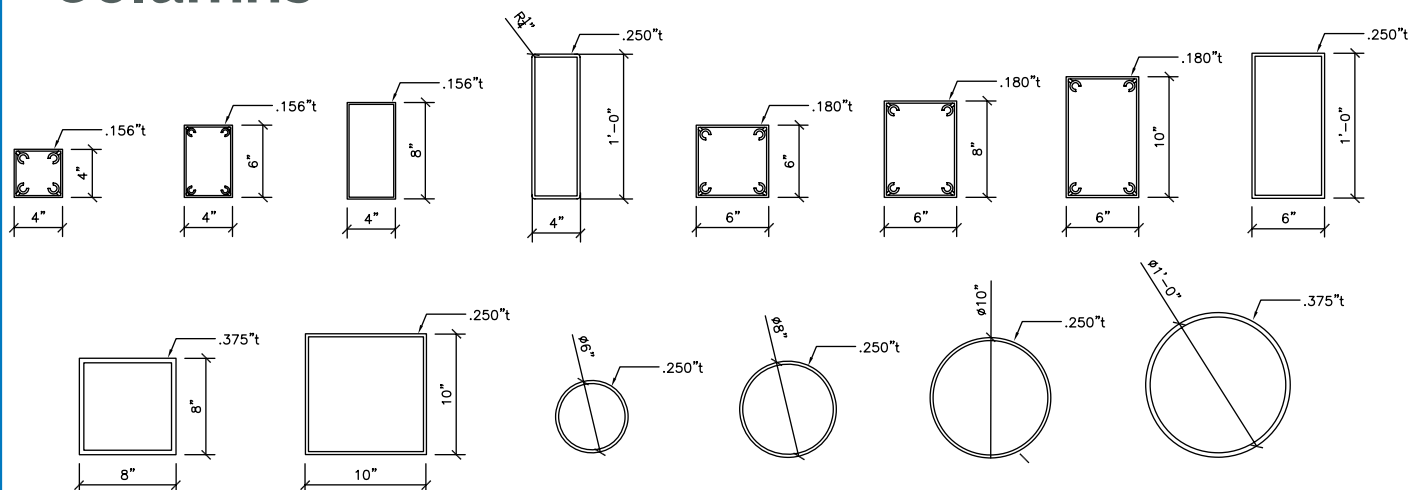
4" x 6" SELF-MATING DECK



Beams



Columns

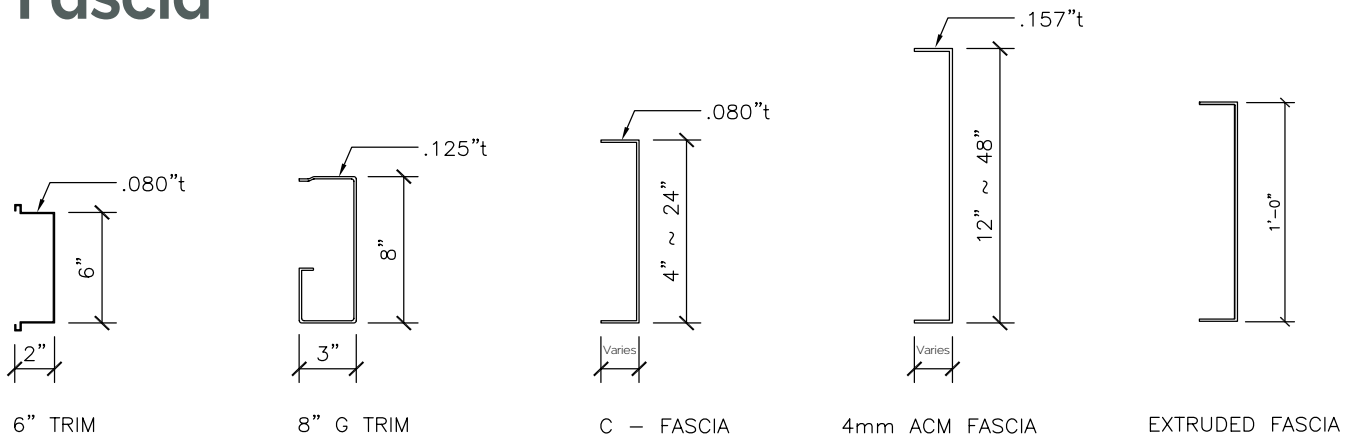


FINISHES/COLOR

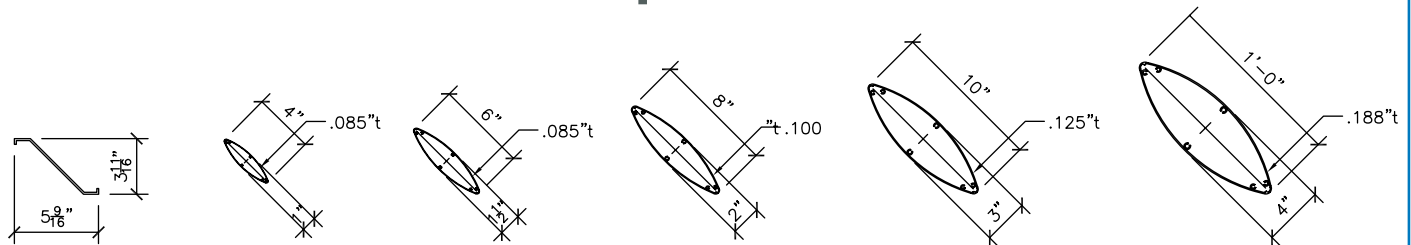
1. Anodized/Clear, Medium, Bronze, Dark Bronze, & Champagne
2. Polyester Baked Enamel (recommend for deck only)
3. Fluoropolymer 2-coat Kynar

This information is provided for reference only and should not be construed as a liability on AVAdek's part. Our team is available to assist with specific design questions when selecting components.

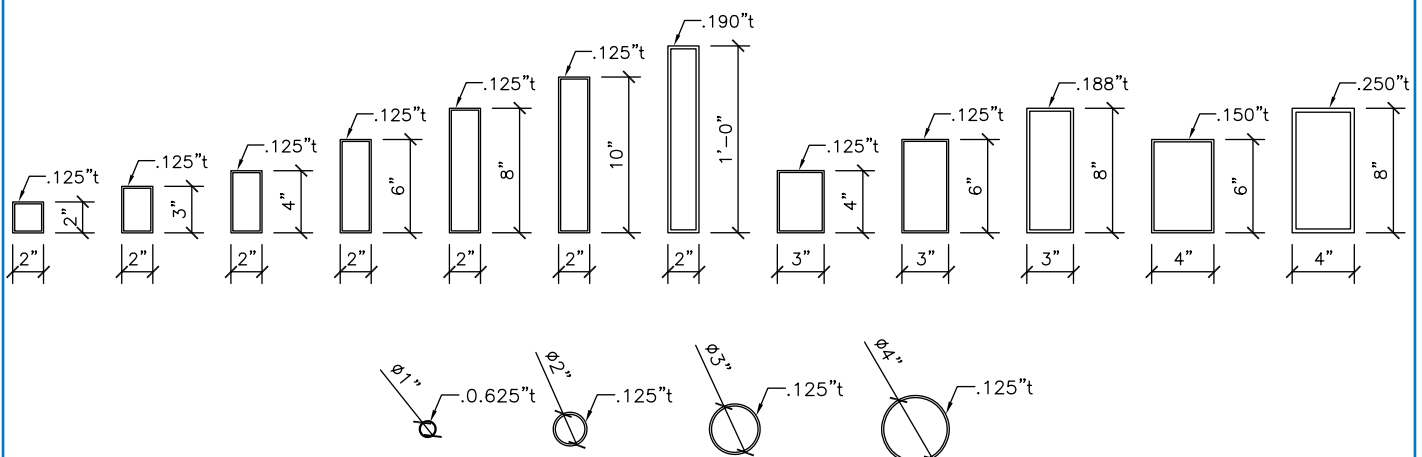
Fascia



Louver Blades & Elliptical Tubes



Trellis Tubes



SPECIFICATIONS
PROTECTIVE COVERS
SECTION 10-73-00

Part 1 – General

1.01 WORK INCLUDED:

Provision, fabrication and installation of **Extruded Aluminum Walkway Covers & Canopies**, as shown on drawings and specified herein, and as needed for a complete and proper installation.

1.02 RELATED WORK:

1. Section 01-03-00 Alternates
2. Section 07-60-00 Flashing
3. Section 07-90-00 Sealants
4. Section 03-30-00 Concrete
5. Section 05-12-00 Structural Steel

1.03 REFERENCE STANDARDS: (Specifications for)

1. The Aluminum Association – Aluminum Design Manual 2010
2. American Welding Society- AWS D1.2/D1.2M: 2008
3. ASTM B 209 Aluminum & Aluminum Alloy Sheet and Plate
4. ASTM B 221 Aluminum & Aluminum Alloy Extruded Bars, Rods, Wire, Shapes, and Tubes

1.04 SAMPLES:

1. Submit samples in accordance with Section 01-30-00
2. Product data: manufacturer's brochures, manuals and literature.
3. Shop Drawings:
 - a. Includes the complete layout, sections, details, components, finishes, sizing, spacing, and fasteners specific to the project. The site-specific shop drawings shall show reactions at surface attachment points and bear the seal of a Registered Structural Engineer.
 - b. General Contractor shall submit shop drawings for approval by the Architect prior to fabrication of any materials.
 - c. General Contractor to verify all dimensions and elevations prior to submittal to Architect.
 - d. Manufacturer shall field verify dimensions prior to fabrication.
4. Finishes: samples of canopy finishes.

1.05 QUALITY ASSURANCE:

1. Canopy shall be designed to comply with state and local building codes.
2. Canopy manufacturer shall have a minimum of 10 years' experience in designing and installing the specified system.
3. The installation of the canopy shall be performed by the manufacturer to assure single source responsibility.

1.06 MATERIALS:

1. Delivery, Storage, and Handling: protect components from one another during shipping, storage and handling. Exercise care when unloading, storing, and erecting to prevent damage.

1.07 WARRANTY:

1. Provide manufacturer's 1-year warranty against defects in material and workmanship.

Part 2 – Products

2.01 MANUFACTURER QUALIFICATIONS:

1. Acceptable manufacturer for Extruded Aluminum Walkway Covers & Canopies: Subject to strict compliance with the specified requirements and the plans, the following manufacturer is acceptable:

AVAddek Walkway Cover Systems & Canopies

12130 Galveston Road, Building 1
Webster, Texas 77598-1539
(713) 944-0988 or (800) 777-4031

2.02 MATERIALS:

1. Components: all components shall be 6063, 6061, or 6005 alloy extruded aluminum.
2. Design Criteria: all components shall be sized to comply with live load and wind load requirements of the project and shall not be less than the dimensions shown on the plan.

2.02 COMPONENTS:

1. Configuration: as shown on the drawings
2. Sizes: minimum sizing as shown on the drawings
3. Columns: all columns shall have radius corners
4. Beams: beams are open at top to drain canopy system internally into columns
5. Deck: deck thickness shall be at least .080" thick
6. Flashing: flashing thickness shall be at least .040" thick

2.03 FASTENERS, CONNECTIONS, AND FITTINGS:

1. Bolted Connections: All bolts, nuts, washers, and screws used in joining the members shall be stainless steel up to 3/8" diameter. Over 3/8" diameter may be Hot Dipped Galvanized.
2. General Contractor shall provide structural attachment points flush with the outside surface of the building.
3. Rafters shall be heliarc welded to wall mounting plates which are bolted to walls.
4. Beams are fastened to Rafters with Concealed Clips.
5. Blades are mechanically fastened to structure with Stainless Steel Screws, concealed where able.

2.04 FINISH:

1. Satin etched Clear Anodized – Aluminum Association Specification AA-M10-C22-A31
2. Satin etched Bronze Anodized – Aluminum Association Specifications AA-M10-C22-A44
3. AAMA 603.8 Baked Polyester Enamel Painted / Color: Per Color Schedule
4. AAMA 607.5 Kynar 500 Fluoropolymer Based Painted 2 Coat / Color: Per Color Schedule
5. Woodgrain: AAMA 2604 – Super Polyester Powder Coated: Per Color Schedule

Part 3 – Execution

3.01 INSTALLATION:

1. The components and accessories are to be supplied and installed by the manufacturer.
2. Install canopy in strict accordance to manufacturer's recommendations.
3. Erect canopy after concrete and masonry work in the vicinity is completed and washed down.

3.02 WORKMANSHIP:

1. Take extreme care to prevent damage or scratching. Replace damaged components prior to installation. All workmanship must be top quality with meat miters and fitted joints.

3.03 CLEANING:

1. Just prior to completion of project, strip protective coatings of covering from aluminum and clean all parts. Repair to new condition to replace any materials damaged during installation.



Headquarters

12130 Galveston Rd., Bldg 1
Webster, TX 77598

Dallas

3325 Halifax St,
Dallas, TX 75247

**Perfection Architectural Systems,
An AVAddek Company**

2310 Mercator Drive
Orlando, FL 32807

www.avadek.com
sales@avadek.com
Nationwide: (800) 777-4031
Office: (713) 944-0988
Fax: (713) 944-5815