

# Data to plan a transportation ecosystem

Claudia Preciado  
Director of Growth  
[@claudia\\_pres](#)

**Our vision is to empower cities to coordinate all aspects of transportation and create equitable, safe, and sustainable outcomes.**

# With Remix, cities can manage mobility programs and design safe, multimodal streets.

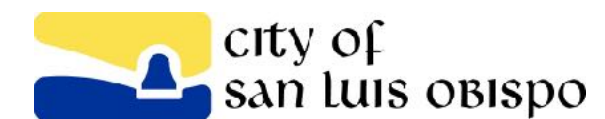
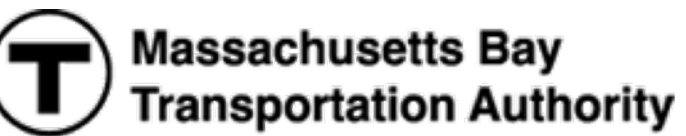
- TRUSTED BY **4,000 PLANNERS** ON 4 CONTINENTS
- BUILT ON THE BEST PRACTICES OF **300+ AGENCIES**
- RAPID INNOVATION ON A MODERN, **CLOUD-BASED PLATFORM**

## NORTH & CENTRAL AMERICA

## EUROPE

## OCEANIA

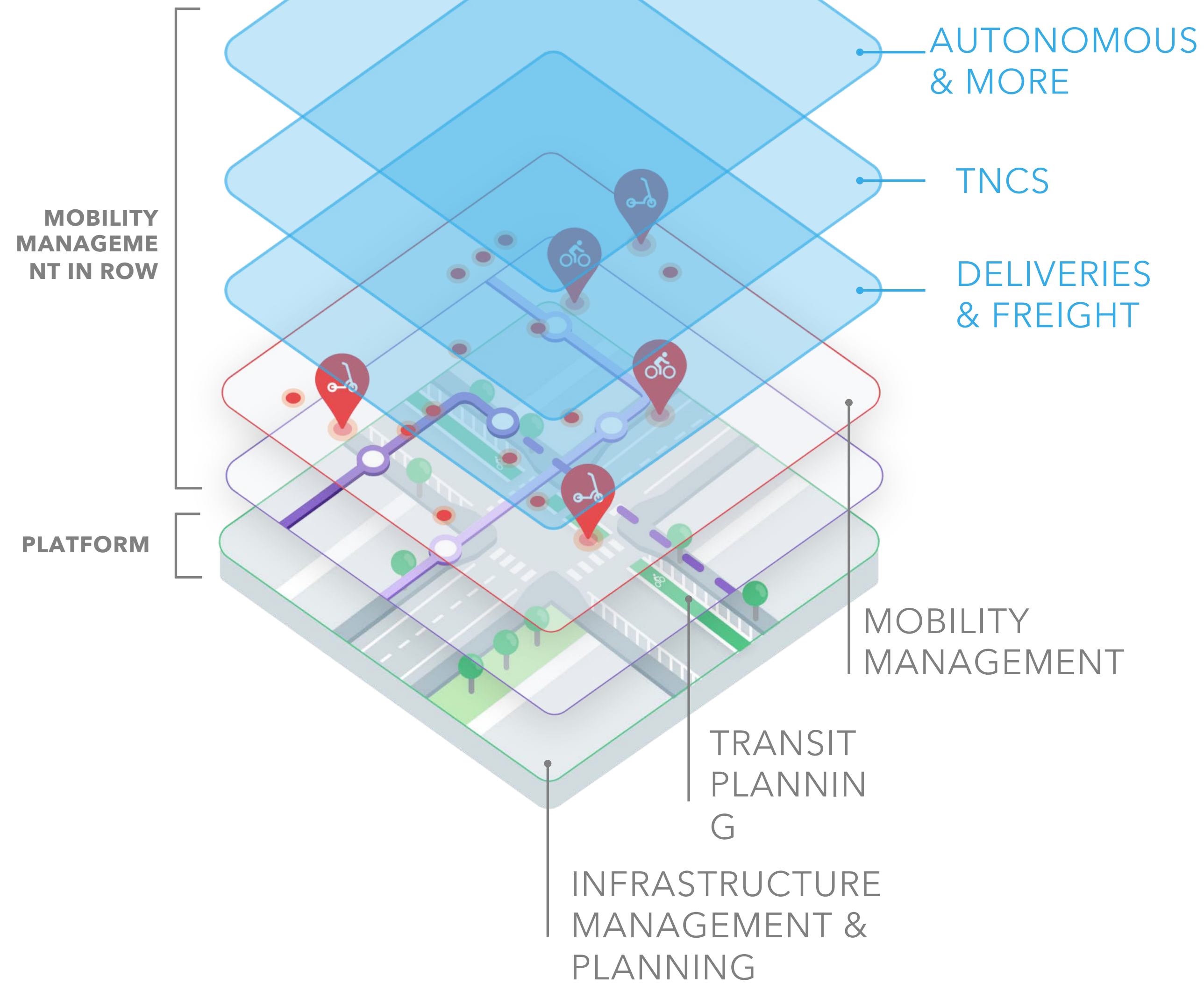




# Platform today



# Future



# How can cities leverage data to achieve their desired outcomes?

1

---

TRANSPORTATION  
PLANNING FOR  
OUTCOMES (E.G. EQUITY)

2

---

SAFETY +  
INFRASTRUCTURE  
PLANNING

3

---

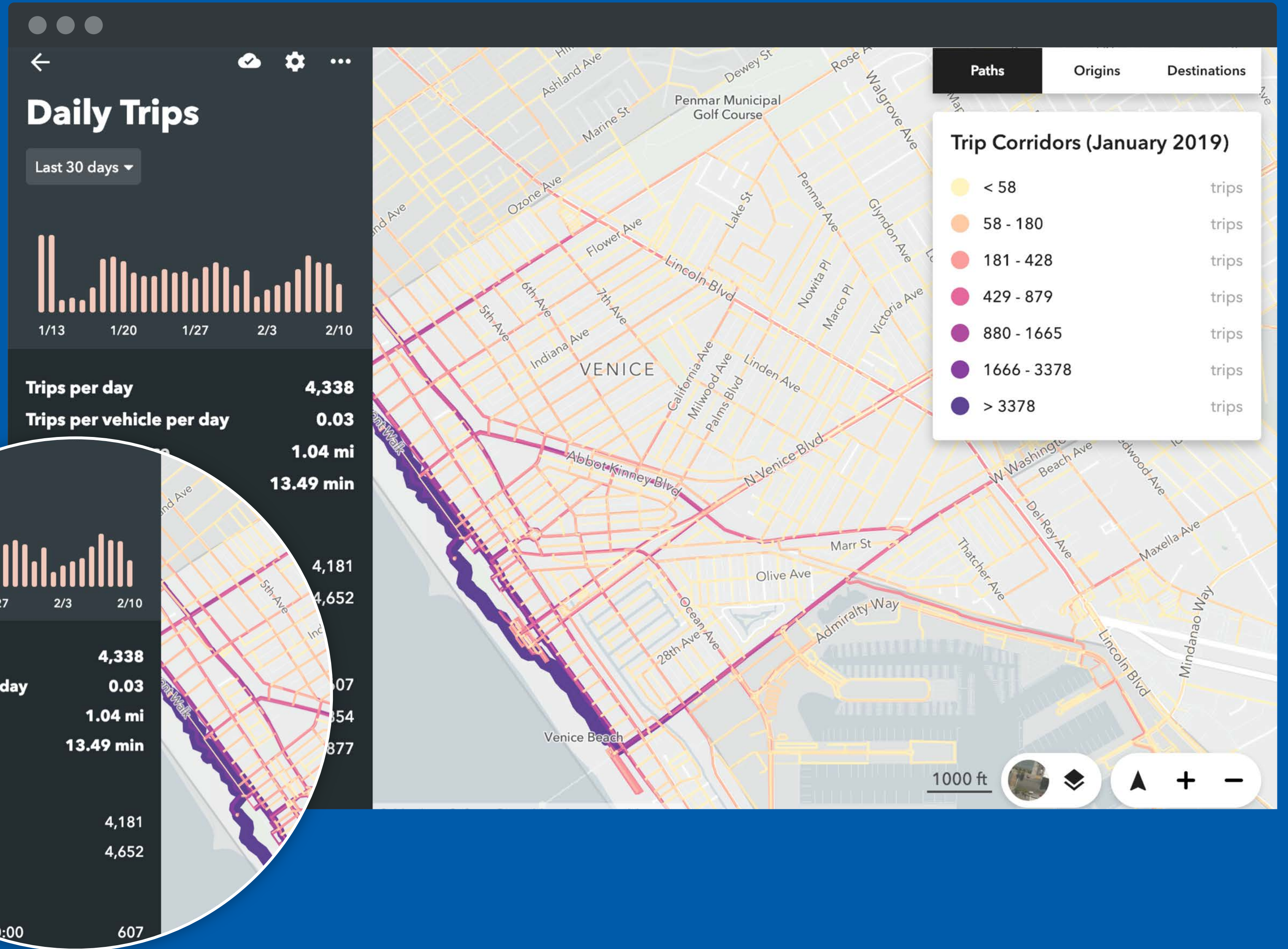
SUPPORT DECISION-  
MAKING AND  
COMMUNICATION WITH  
THE PUBLIC

*One data point is a pulse. Understanding how mobility services are used **over time** helps to invest in infrastructure, plan for outcomes, and iterate on policies to create more livable cities.*

How are people using new services to move around the city?

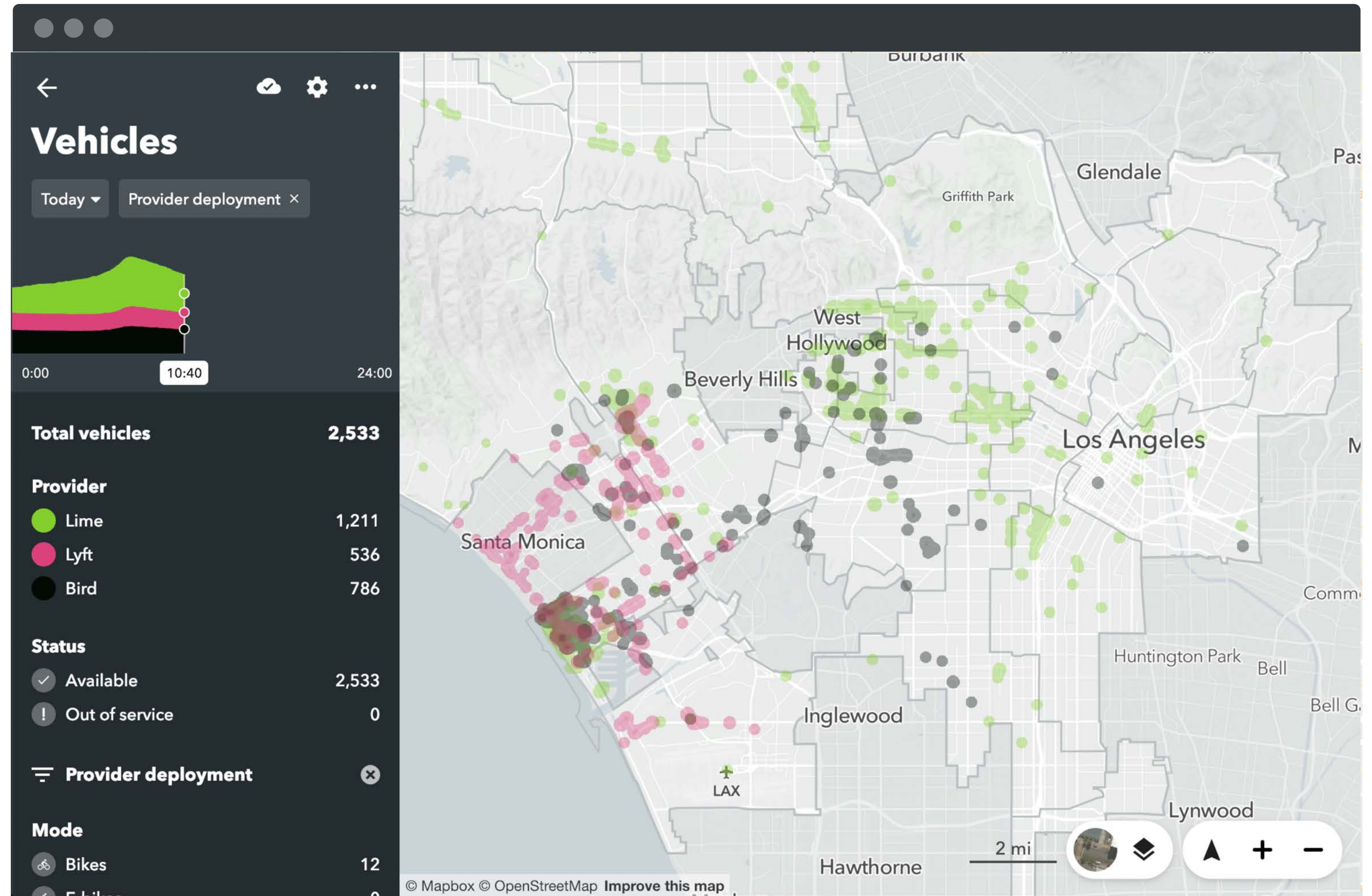
What routes are most popular for bikes and scooters?

How are people using mobility services in relation to transit?



# Reporting on the state of dockless and the longer term impacts for sustainable infrastructure

- March: Putting together first dockless report to City Council using analysis via Remix. "Council member roadshow"
- Proving return on investment - e.g. highly contentious Venice Blvd bike lane
- Next: using dockless data to prioritize long list of active transportation projects

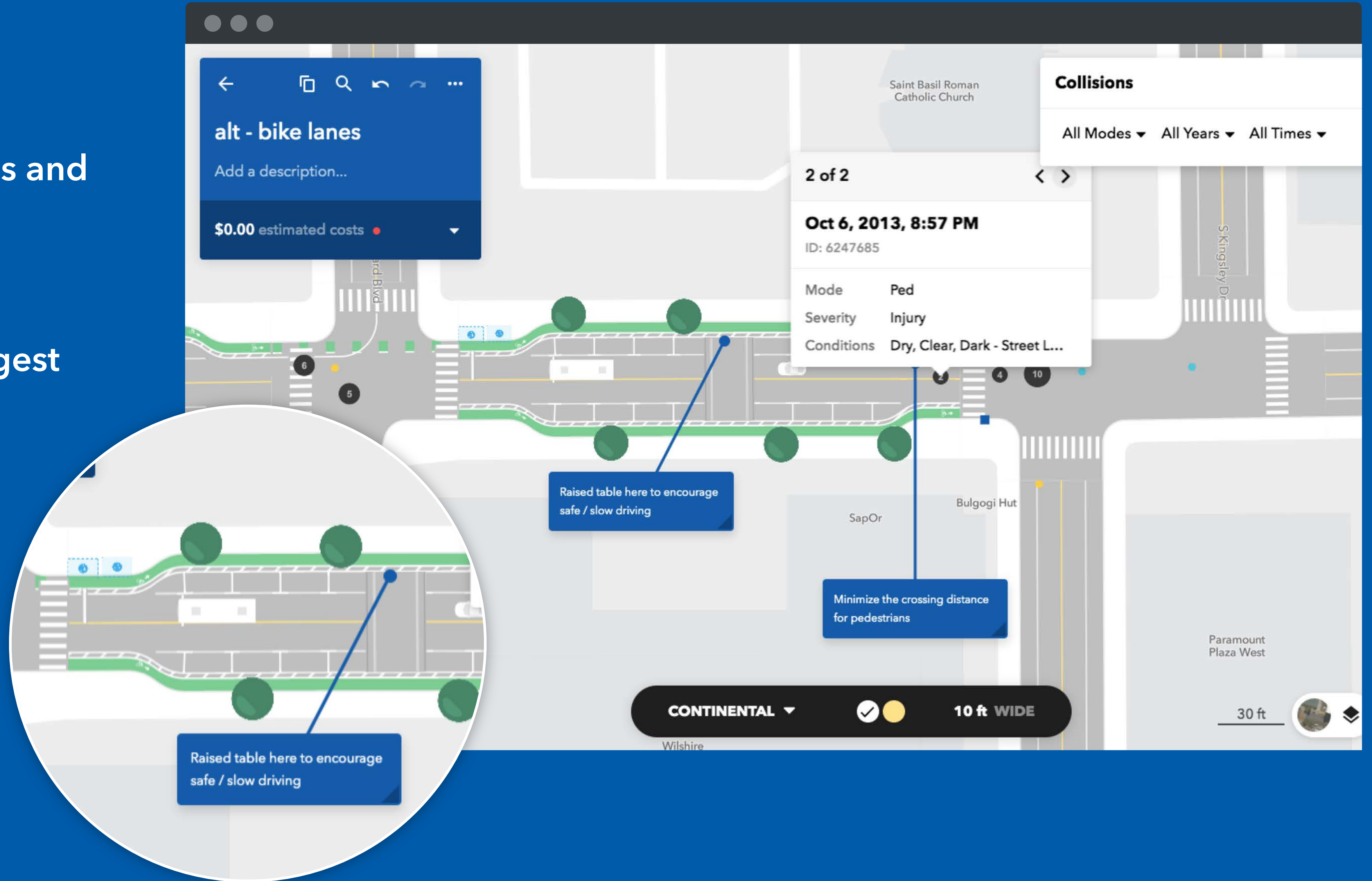




Are vehicles traveling in prohibited areas?

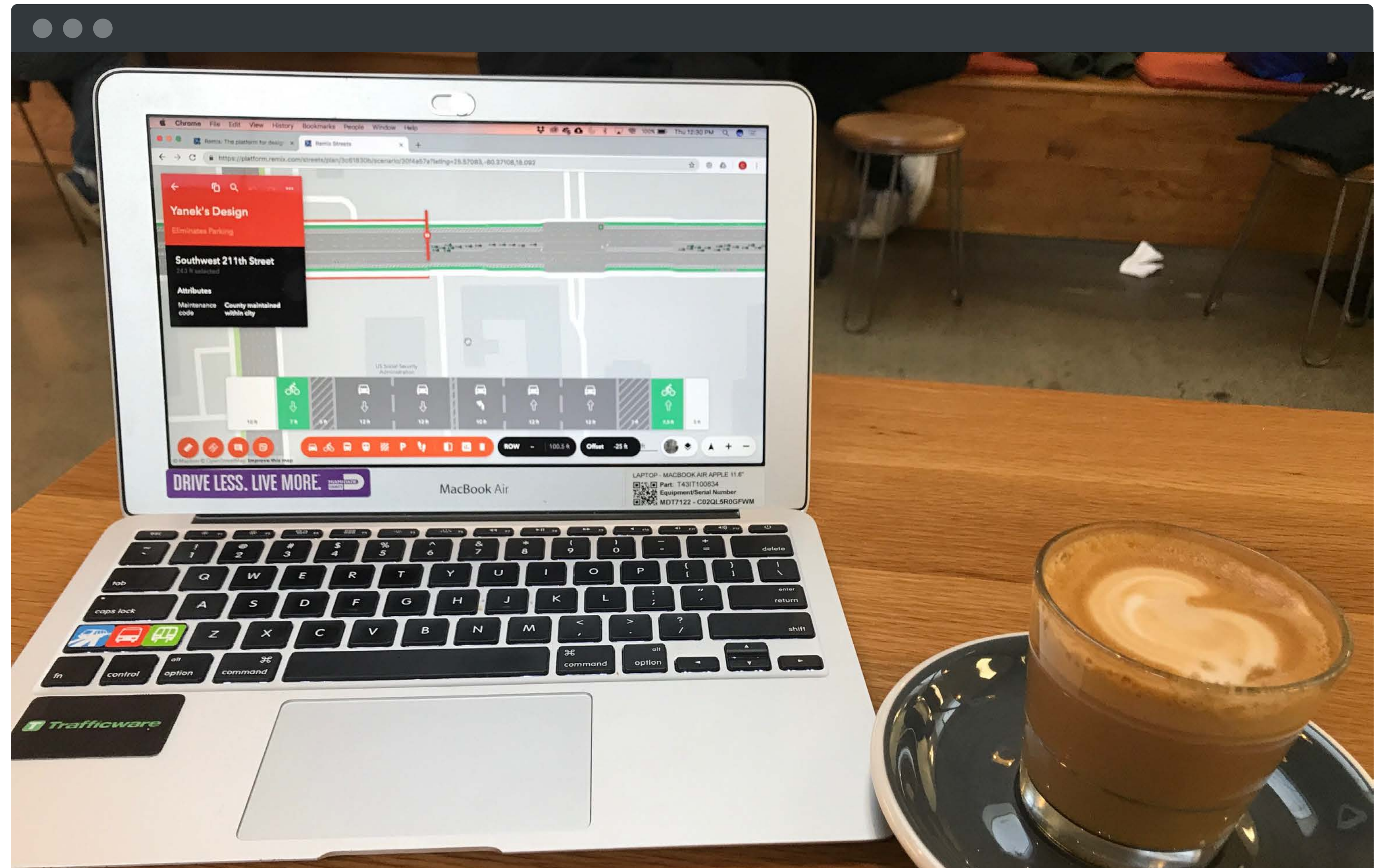
Are companies preventing parking in no-parking zones and relocating illegally parked vehicles quickly?

Where can infrastructure investments deliver the largest safety benefit?



# Building multi-modal streets

- Rapid iterations based on stakeholder feedback with City traffic engineers allowed Miami-Dade County to take advantage of a fast moving resurfacing project
- Southwest 211th Street arterial will have bike lanes summer 2019!

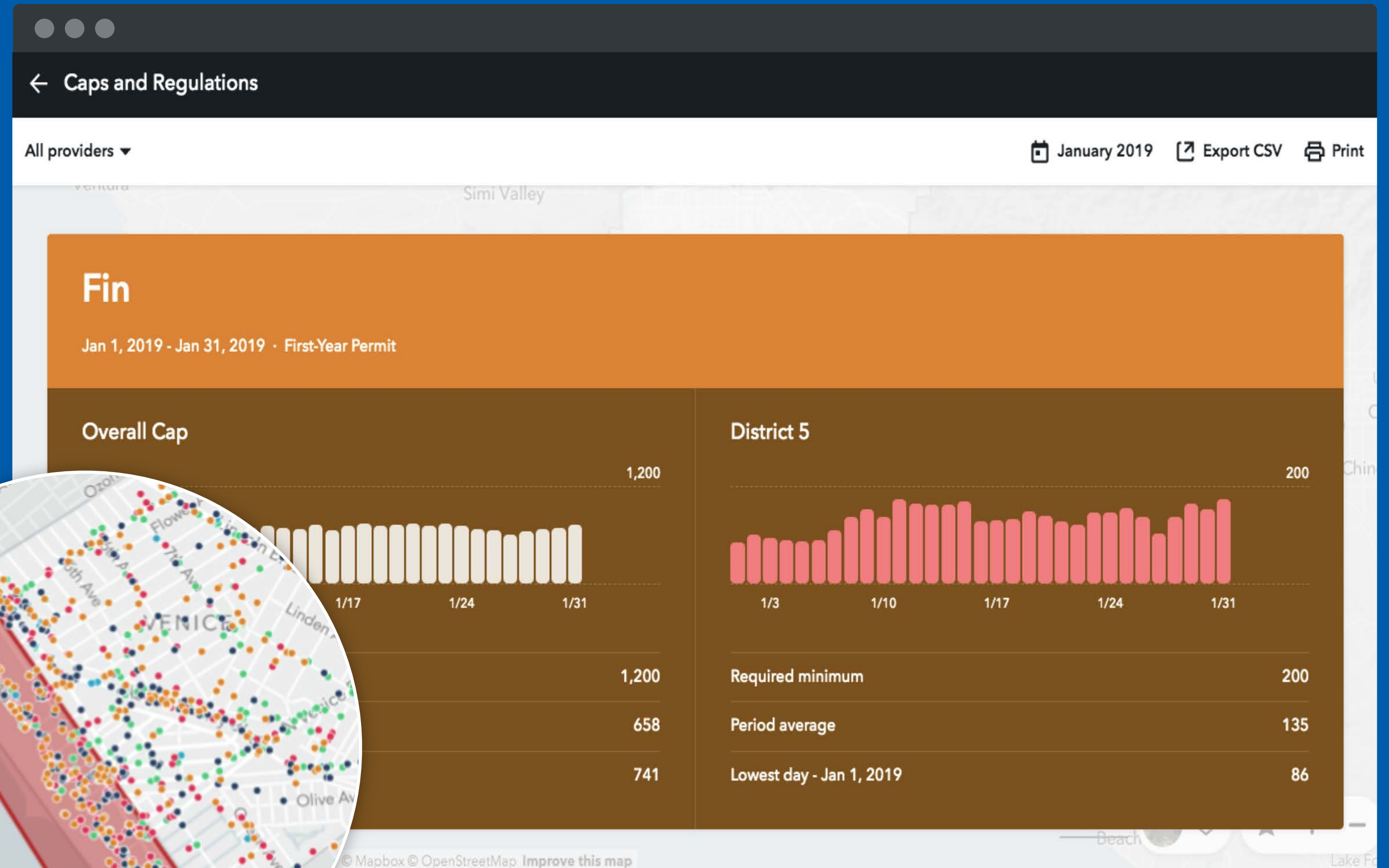
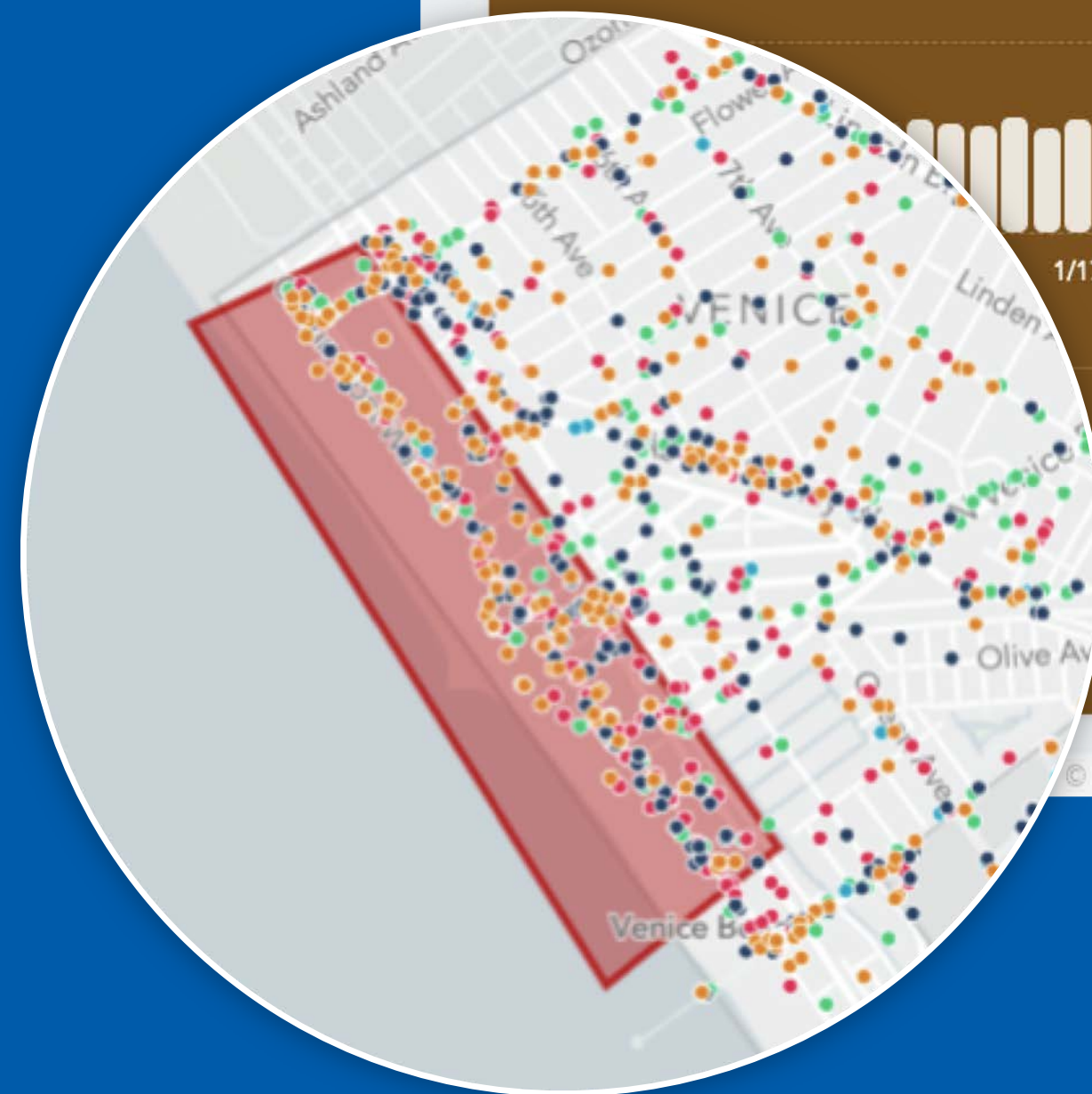


DATA-DRIVEN DECISION-MAKING

Are vehicle caps being exceeded?

Are services available in equity focus areas?

How can we encourage multimodal services for this special event?



# Supporting equity distribution in Columbus, OH

- Columbus not only discovered providers were not meeting equity requirements, but most importantly, finally felt empowered to take action
- “Nudged” providers to comply and now working together to redistribute

**Vehicles**

Today ▾ Provider deployment ×

District 13: Mitch O'Farrell ×

0:00 9:00 24:00

**Total vehicles** 91

**Provider deployment** ×

**Status**

- ✓ Available 91
- ! Out of service 0

**Provider**

- Lime 86
- Lyft 0
- Bird 5

**Mode**

- 🚲 Bikes 0

**Scooter** has been here for 16h

Provider	Lime
Status	Available
Status reason	Rebalancing dropoff
Arrived here at	1/23/2019, 7:17 PM
Departed at	n/a
Vehicle ID	Hidden for privacy

This work has only just begun.  
We can no longer afford to focus on modes in silos  
- transportation is an ecosystem.

**If we can't measure it, we can't improve it.**

Claudia Preciado, Director of Growth  
@claudia\_pres | @remix