

Limited Access Connections

Innovation in Action:
First and last mile solutions
with Pierce Transit and Lyft

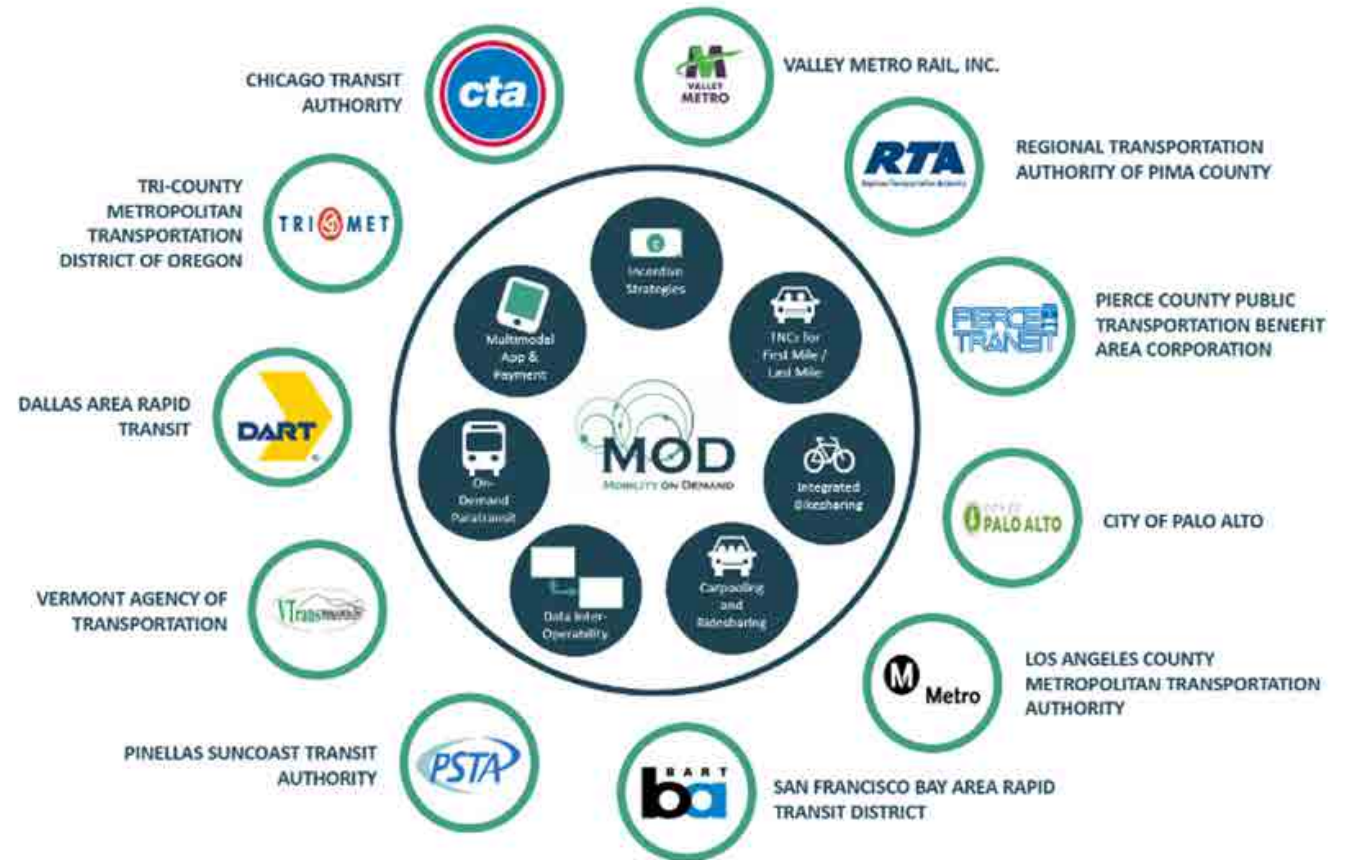
Penny Grellier
Business Partnership Administrator



Limited Access Connections

2016 MOD Sandbox At a Glance

The purpose of this project and its funding is to determine if TNCs and transit can work together to improve availability of shared-use mobility options.

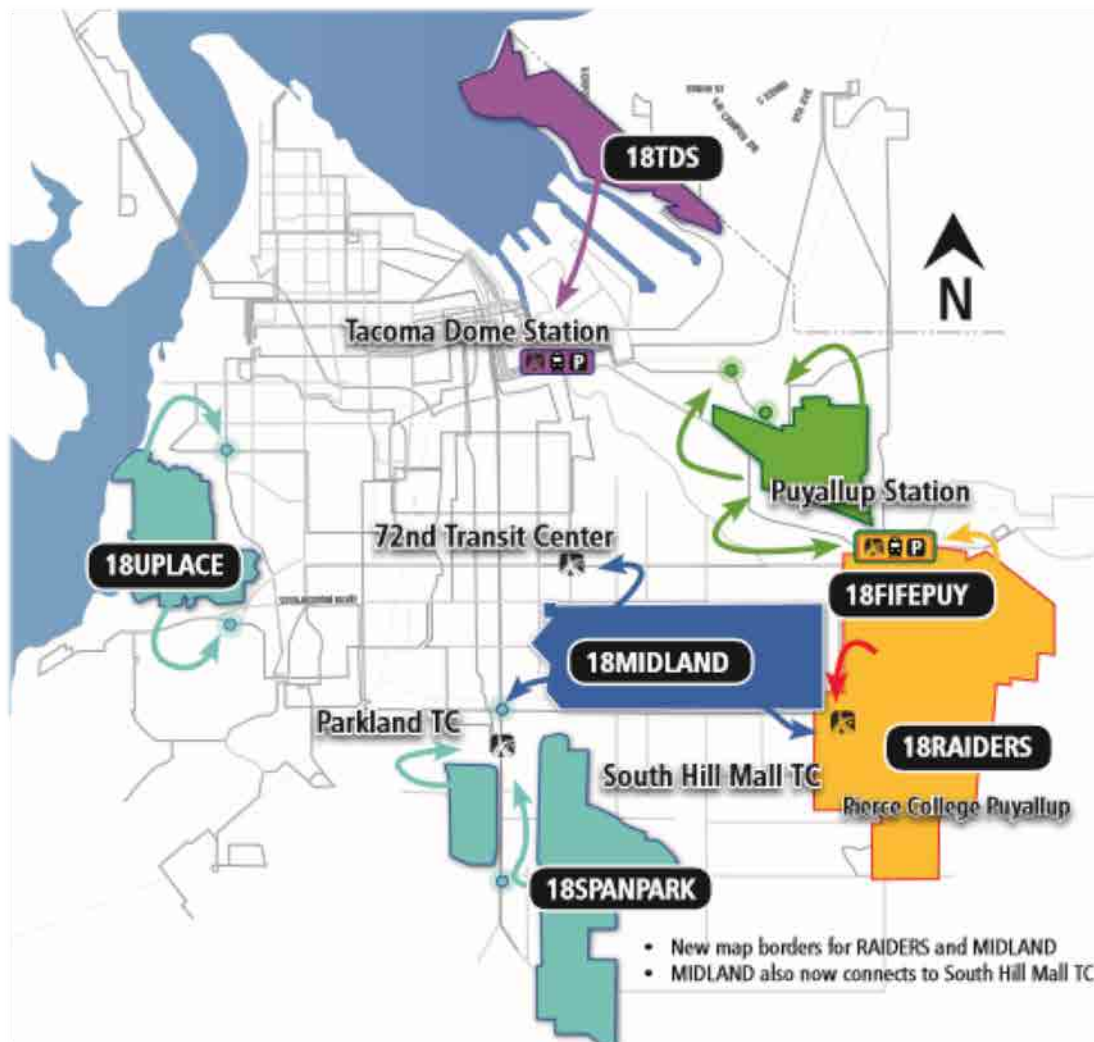


Limited Access Connections

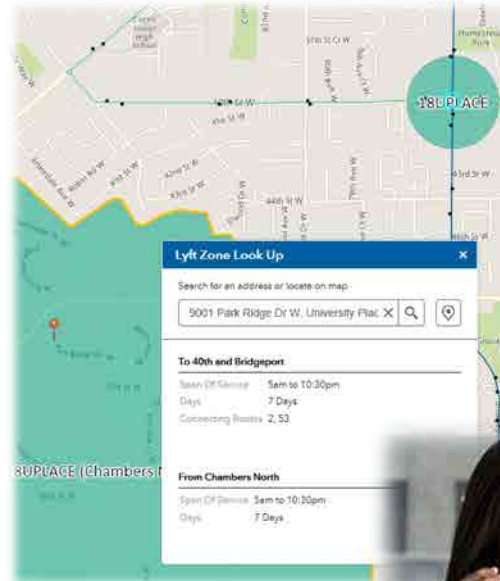
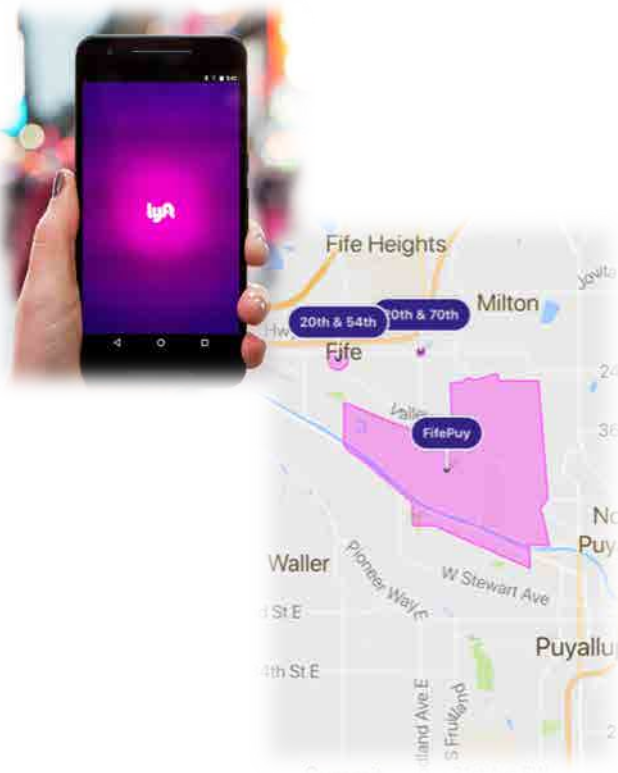
- **Goal:** to provide first and last mile connections to transit hubs and bus stops in areas/times of limited service
- **Challenges**
 - negotiations, data sharing with TNC
 - equity in service provision (WAV, phone, unbanked)
 - getting the word out
- **Current status:** launched May 15, 2018; projected end Dec 31, 2019



Limited Access Connections



Limited Access Connections



PT wheelchair accessible vehicles available



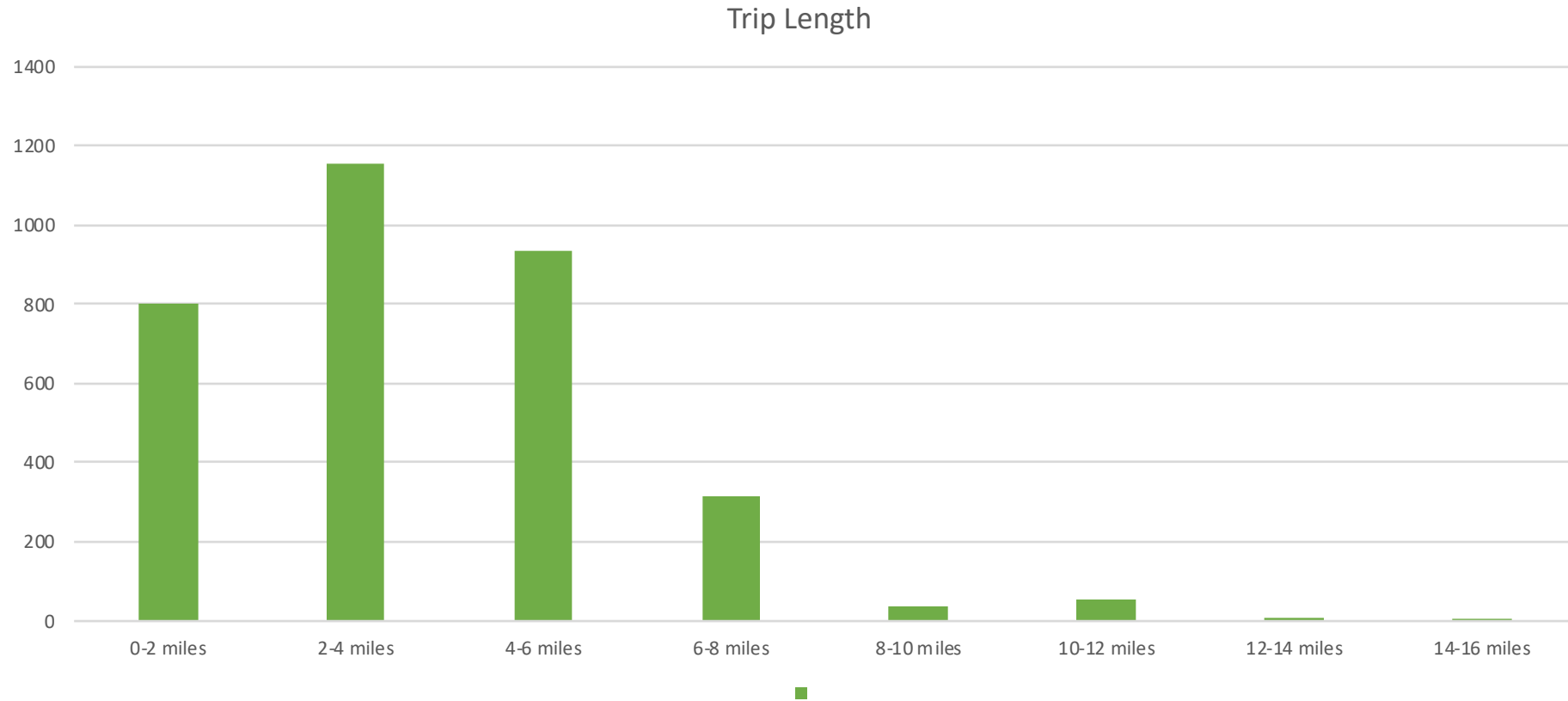
Limited Access Connections

So far...

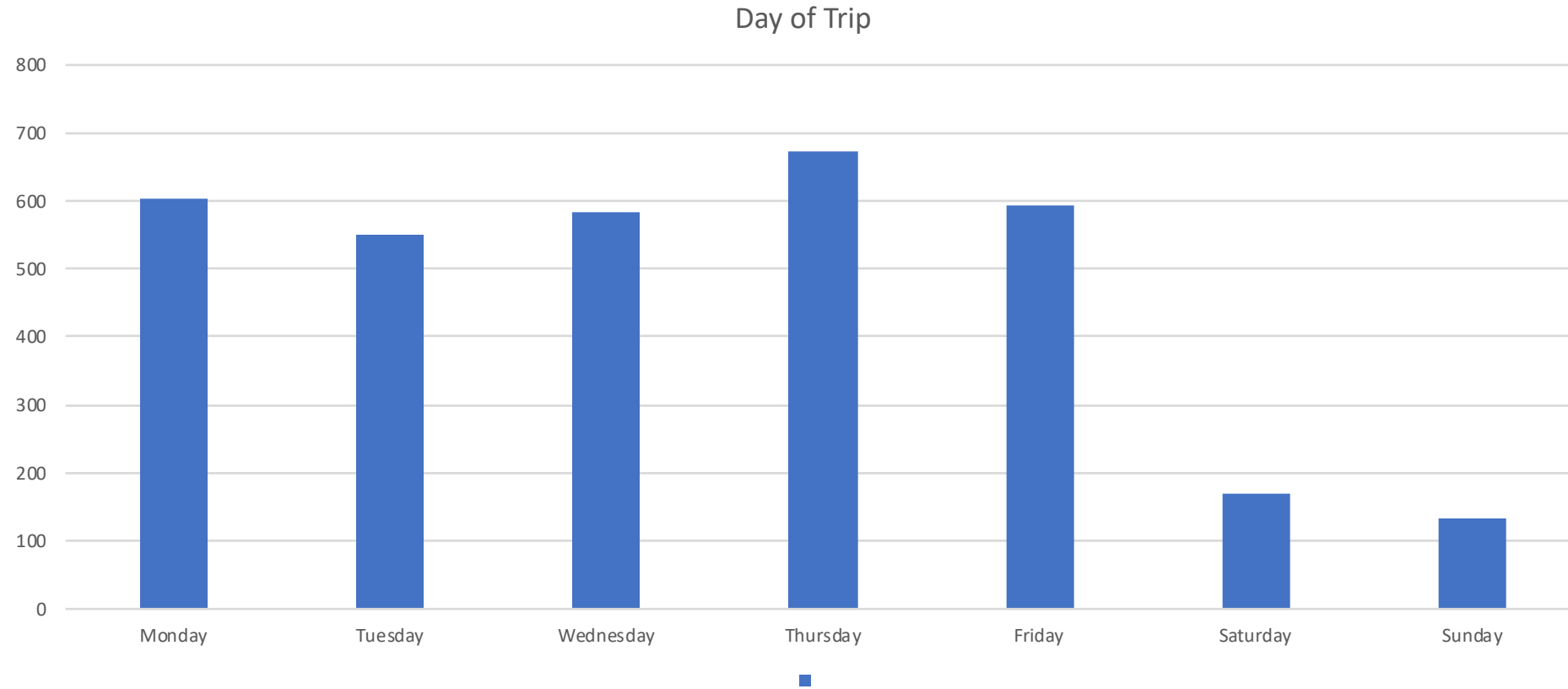
- Total trips provided: 3,307
- Average cost per trip: \$10.44
- Most popular zone: FIFEPUY



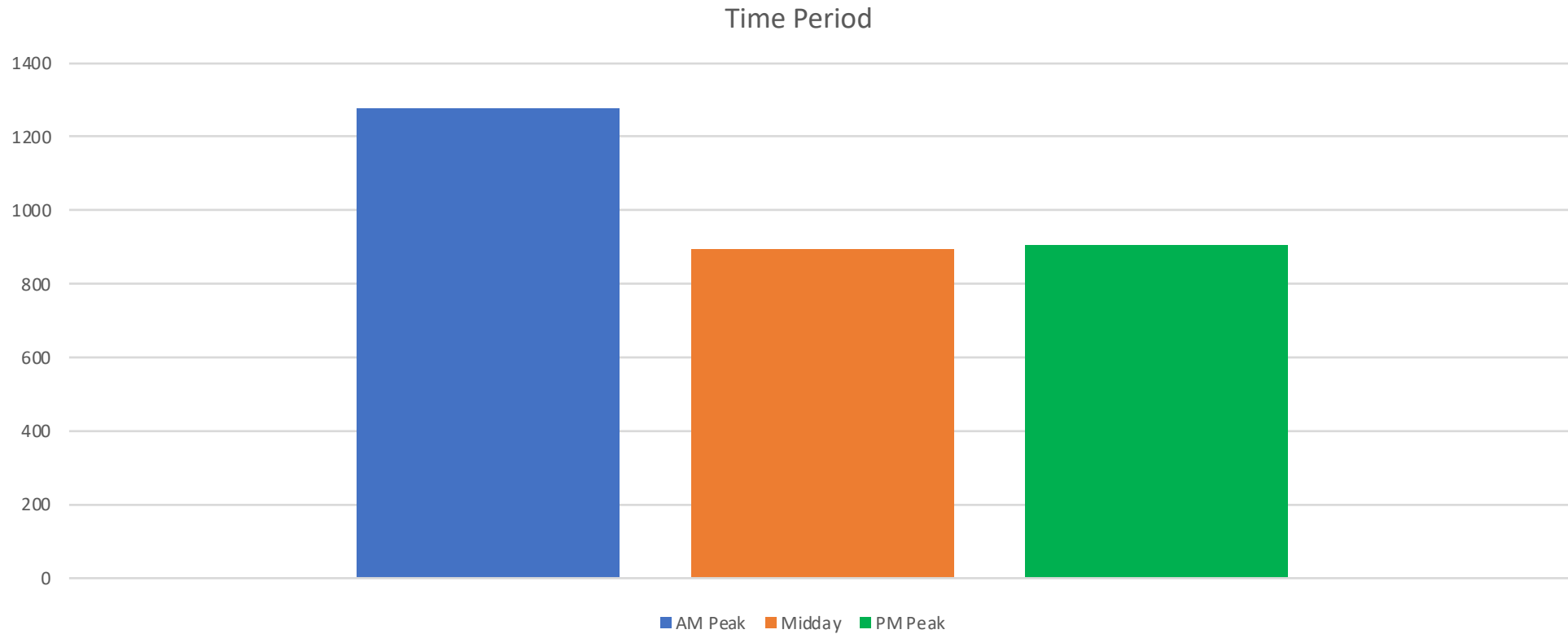
Limited Access Connections



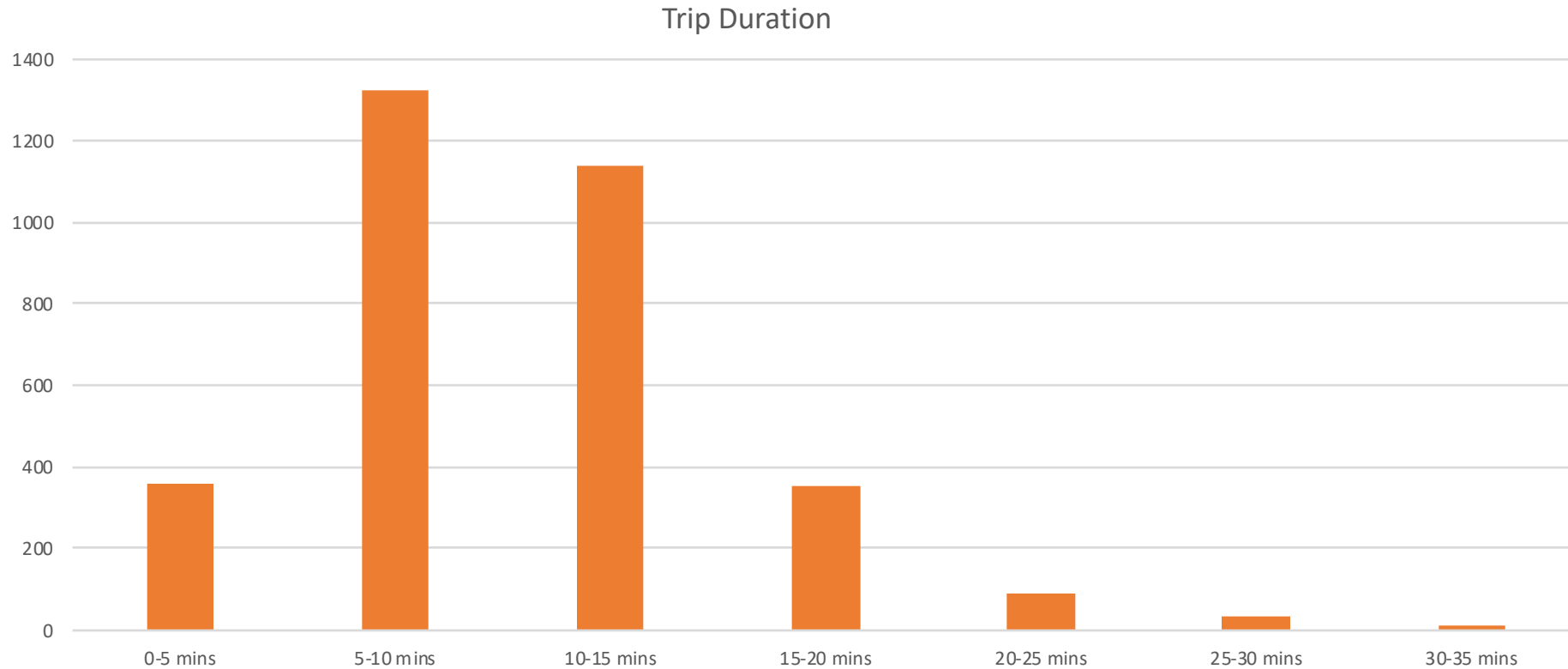
Limited Access Connections



Limited Access Connections



Limited Access Connections



Limited Access Connections

What's next?

- Continue marketing and outreach
- Rider survey
- Independent Evaluation
- Adjust zones
- Report to community



Limited Access Connections

Penny Grellier

Business Partnership Administrator

253.589.6886

pgrellier@piercetransit.org

www.piercetransit.org/limited-access-connections

