



SMART
CITY
PDX

smartcitypdx@portlandoregon.gov

www.smartcitypdx.com

[@smartcitypdx](https://twitter.com/smartcitypdx)

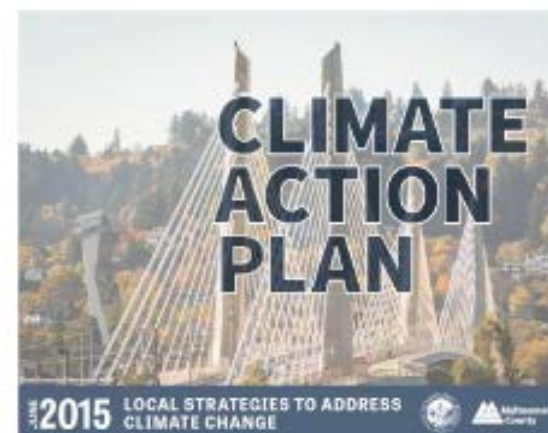
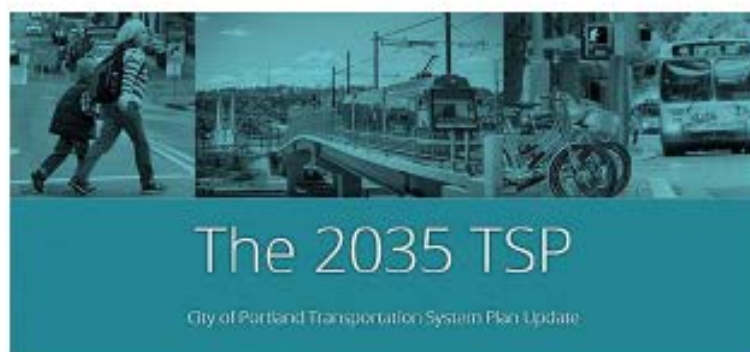
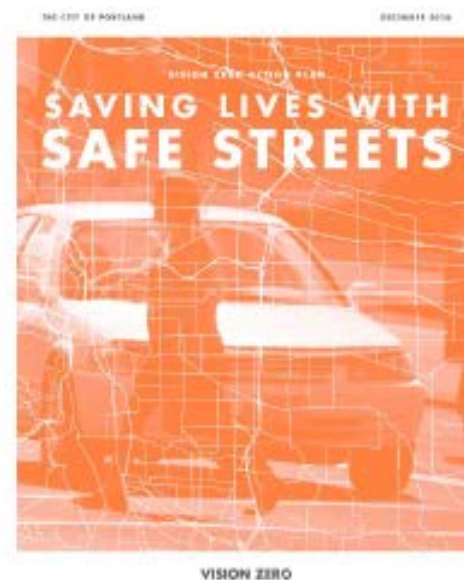
What does Portland mean by “smart cities”?


1. Innovative uses of data and technology to improve process, provide better services and increase access
2. Better management, analysis and use of data
3. Leverage city infrastructure as a community resource to do all of this



Prioritize.
Clearly define a problem.
Start small.
Stay focused.
Embrace the learning.





A serene landscape photograph of a sunset over a body of water. The sky is filled with soft, horizontal clouds in shades of orange, pink, and grey. The sun is low on the horizon, creating a warm glow. In the foreground, a dark, silhouetted bridge or walkway runs along the left side of the water. The water's surface is calm, reflecting the colors of the sky. A line of dark trees and foliage forms a silhouette against the horizon. The overall mood is peaceful and contemplative.

Technology is a means to an end.
(and it's not the only means)

Smart City PDX



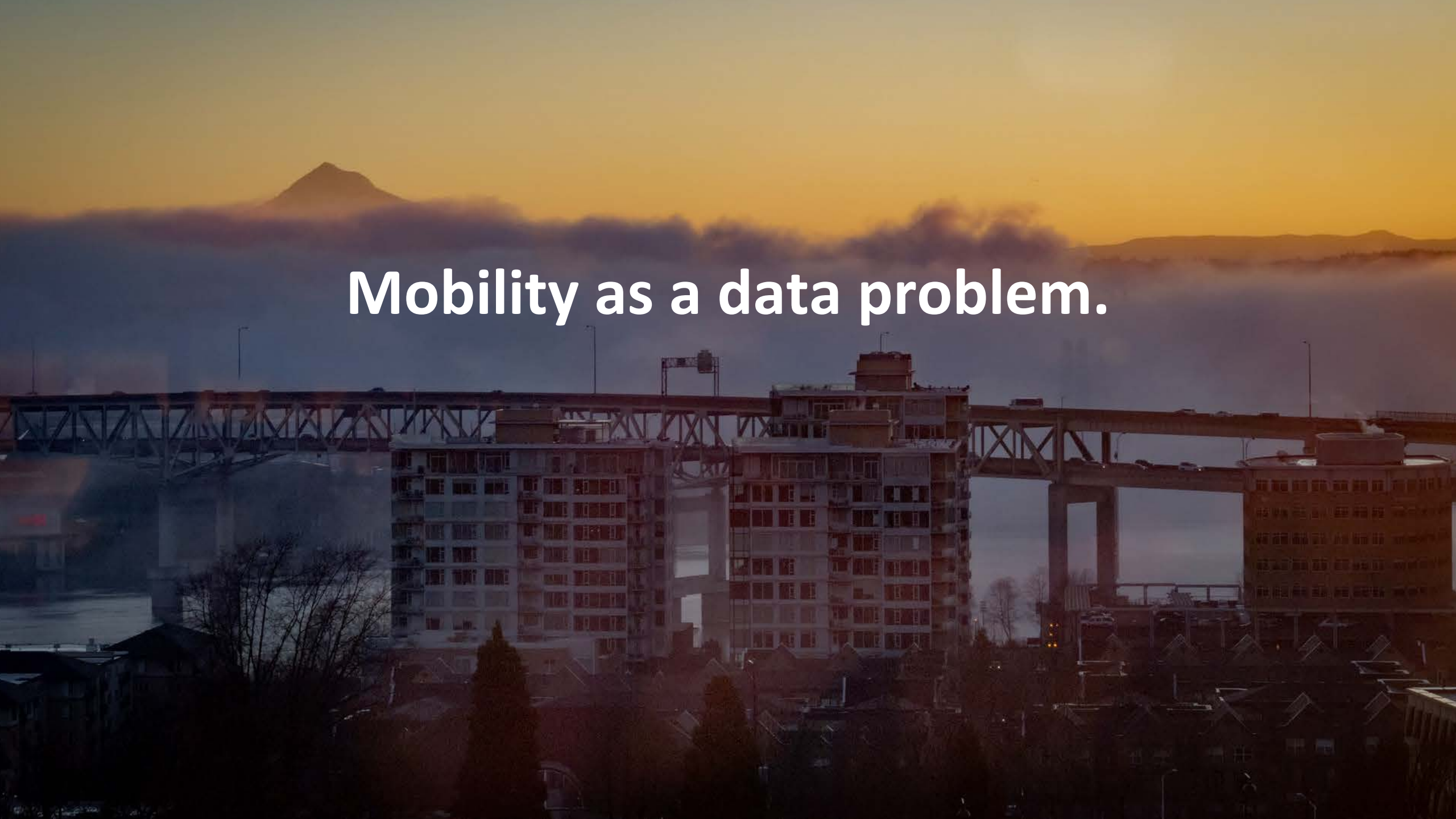
Citywide initiative to make Portland a place where data and technology improves people's lives



Prioritizing projects that reduce inequities for people who have been left behind in our city

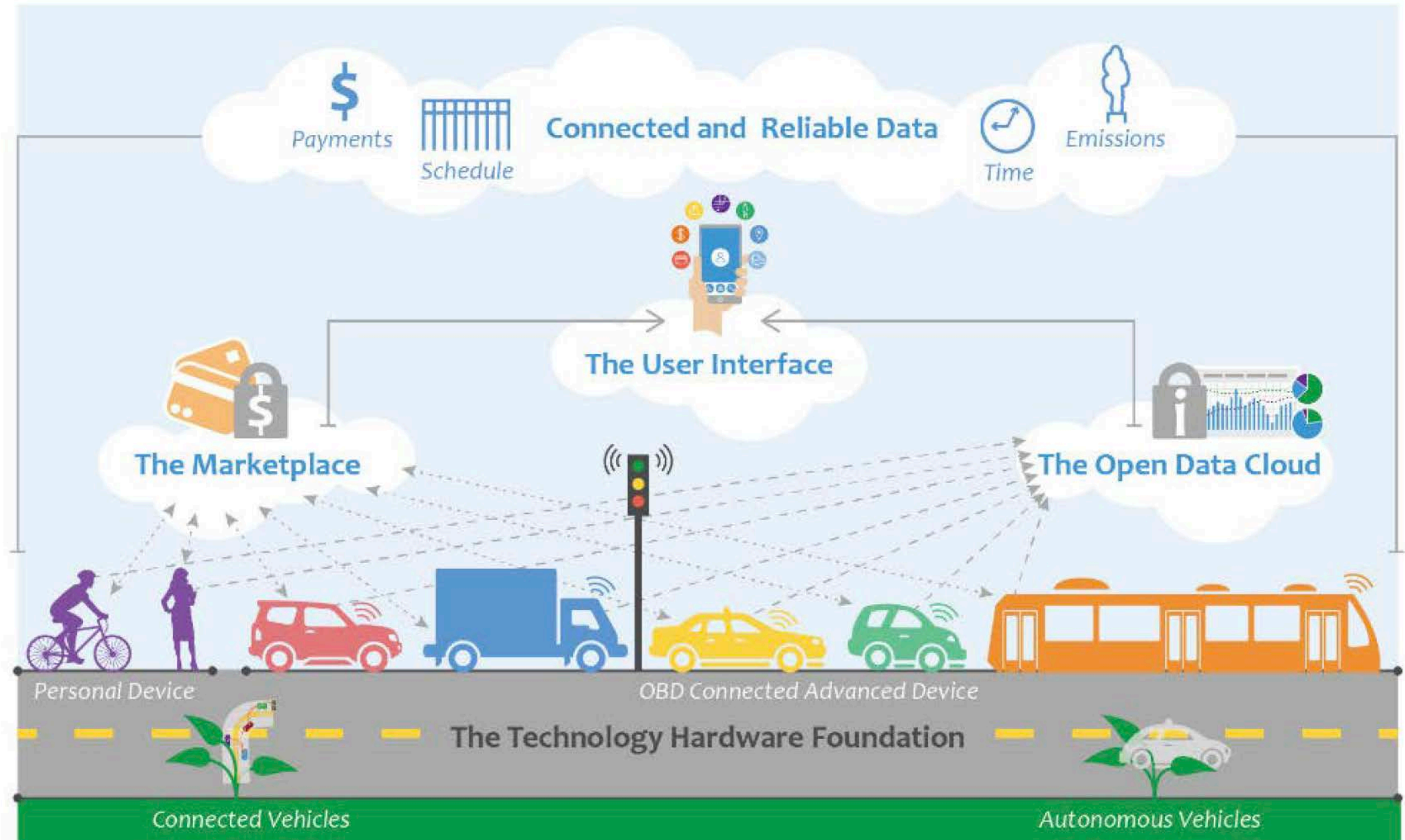


SCPDX Priorities Framework adopted by Portland City Council June 21, 2018
<https://www.smartcitypdx.com/guiding-principles>

A photograph of a cityscape at sunset. In the foreground, there are several multi-story apartment buildings with many windows. Behind them, a large steel truss bridge spans across the frame. In the background, a mountain peak is visible above a layer of clouds. The sky is a mix of orange, yellow, and blue, indicating the time is either sunrise or sunset. The overall mood is serene and urban.

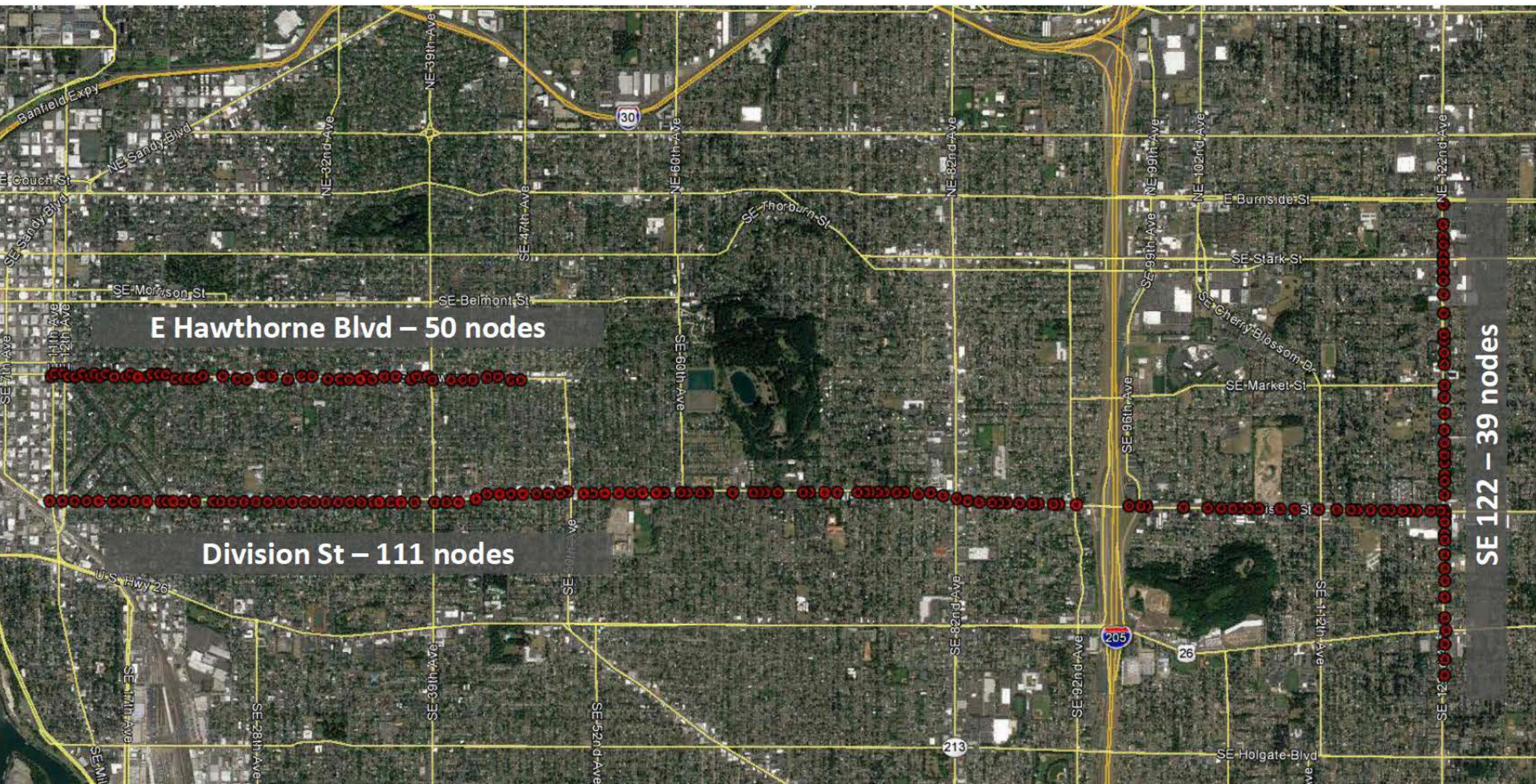
Mobility as a data problem.

Figure 1: UB Mobile PDX Framework



Traffic Safety Sensor Pilot (AT&T/GE/Intel)

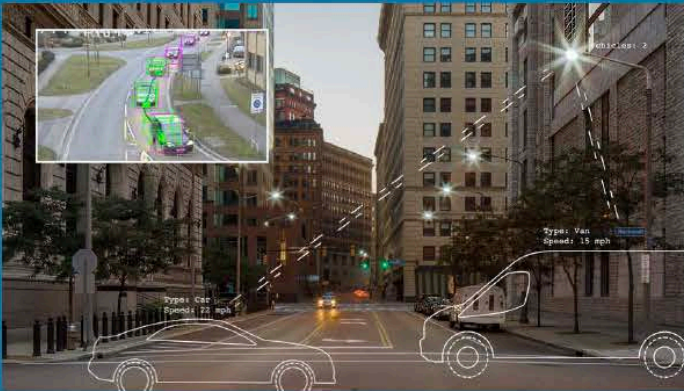




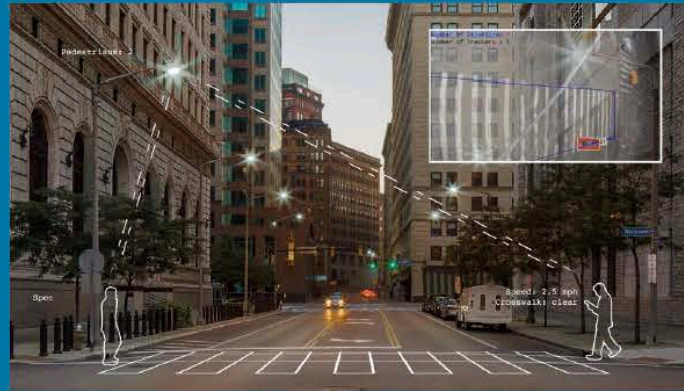
Capturing data on the move

Traffic Planning	Parking Planning	Pedestrian Planning	Environmental Planning
Speed Direction Count Location	Vehicle in Vehicle out Location	Speed Direction Count Location	Humidity Pressure Temperature Vibration Location

TRAFFIC OPTIMIZATION

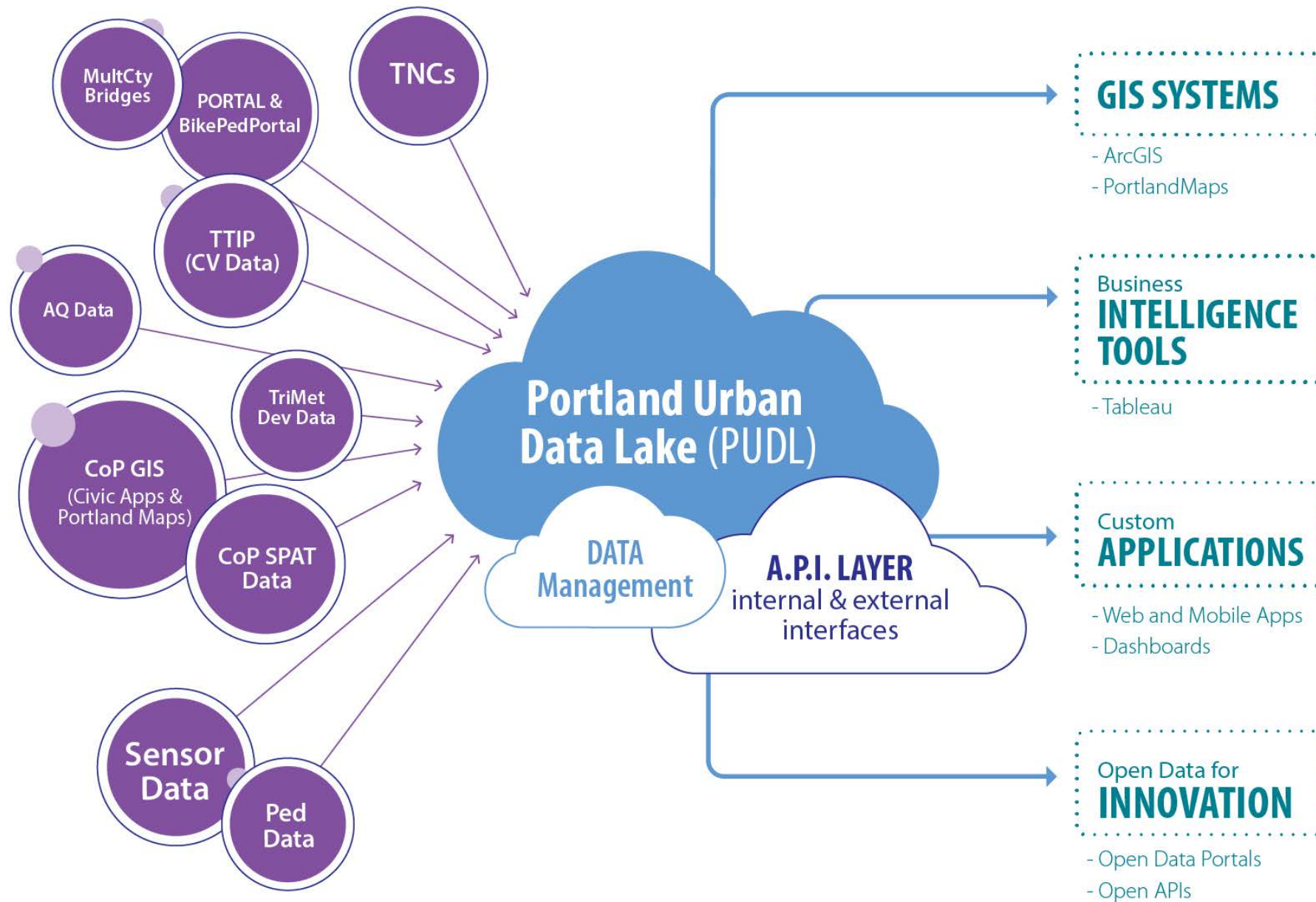


PEDESTRIAN SAFETY



PARKING UTILIZATION

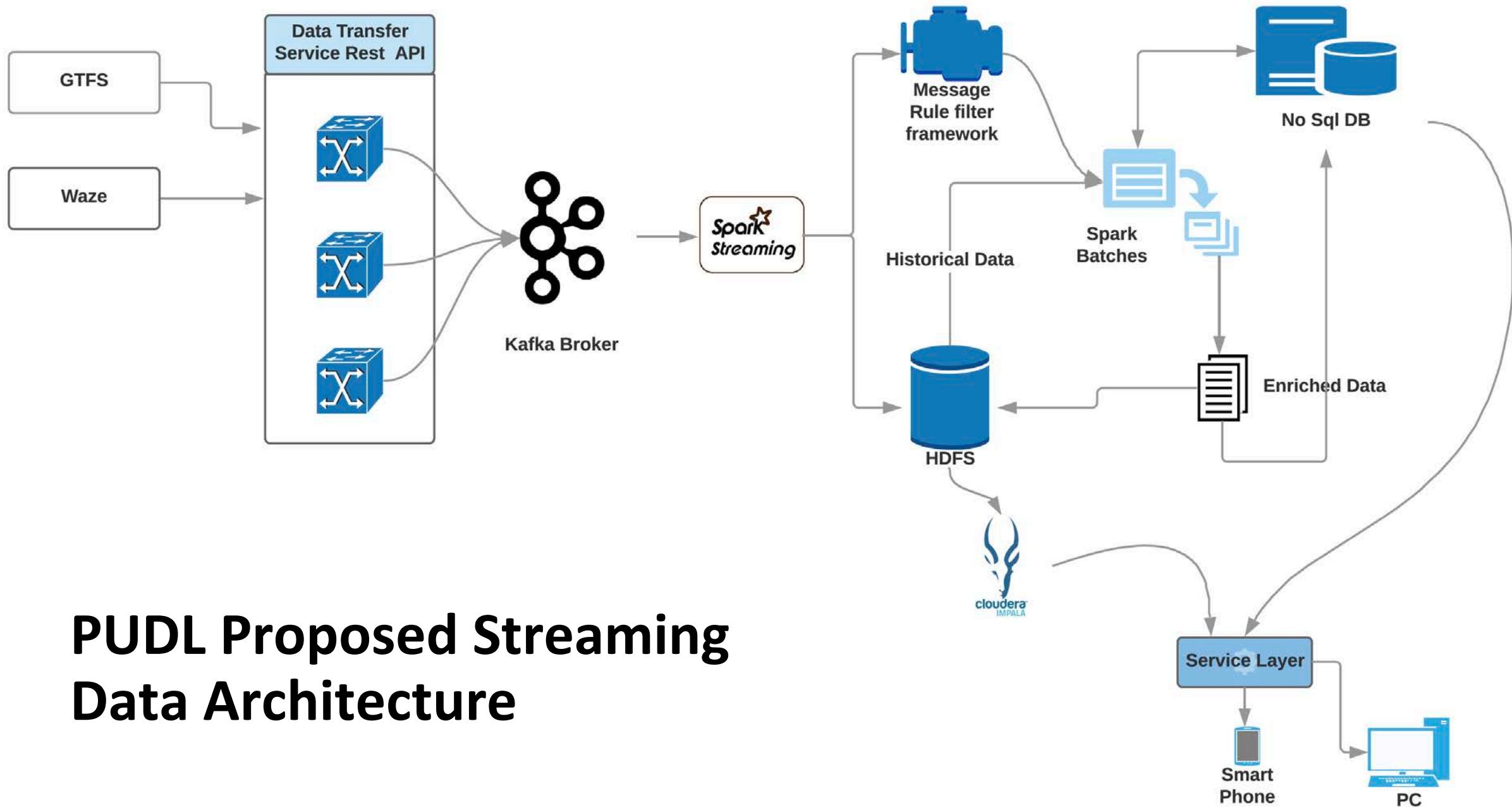




PUDL pilot use cases

- Improved transit arrival prediction
- Portland's dockless scooter pilot (MDS)
- Traffic Safety Sensor data





PUDL Proposed Streaming Data Architecture



Bureau of Planning and Sustainability
Innovation. Collaboration. Practical Solutions.

PBOT
PORTLAND BUREAU OF TRANSPORTATION

Office of Management & Finance
Bureau of Technology Services



Portland State
UNIVERSITY

TRI  MET



Metro



Microsoft

cloudera

CLAIRVOYANT

atmosera®



esri®

SCPDX Privacy and Information Principles



**Transparency and
accountability**



Data openness



**Equitable data
management**



**Automated decision
systems**



**Full lifecycle
stewardship**



Data utility



**Ethical and non-discriminatory use of
data**

The logo consists of a teal rounded square containing the text "SMART CITY PDX" in white, with "CITY" in a larger, bolder font.

SMART
CITY
PDX

smartcitypdx@portlandoregon.gov

www.smartcitypdx.com

@smartcitypdx

GO BLAZERS!!!