

# 9595 WILSHIRE

BEVERLY HILLS

LUXURY  
DEFINED.

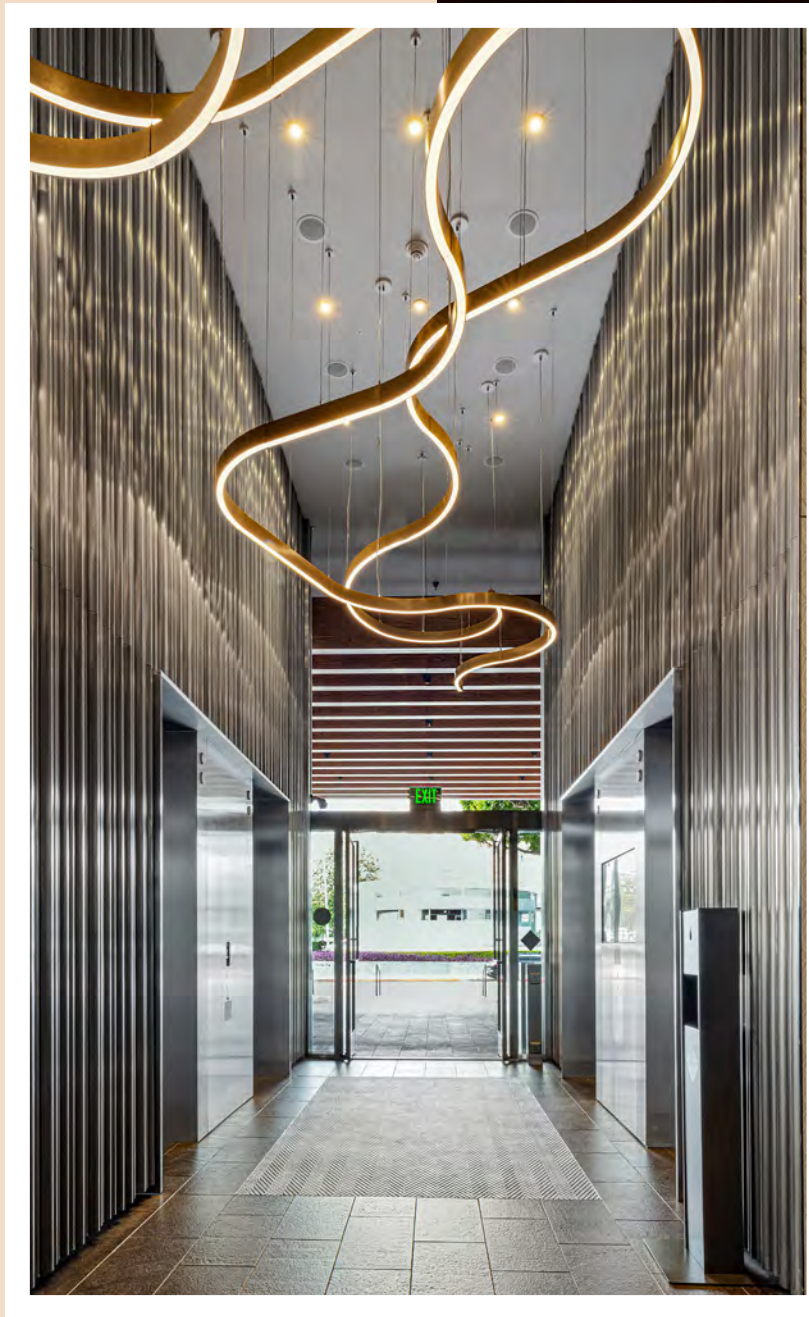
EXPERIENCE  
THE  
DIFFERENCE.

9595 Wilshire is a modern prestigious building ideally located at the crossroads of Wilshire, Camden and Dayton Way, the entry to the Beverly Hills Golden Triangle. The building is a distinctive 10-story Class "A" tower, offering stunning views of Beverly Hills and the Hollywood Hills.

Its strategic location one short block from Rodeo Drive allows tenants and visitors to enjoy the close proximity of some of the finest boutiques and restaurants on the West Coast.



WILSHIRE





# An Unrivaled Workspace





W  
E  
L  
C  
O  
M  
E

Enjoy the  
very best of  
work and life



## Experience Beverly Hills' most prestigious business address paired with the premier amenities of the Golden Triangle

- Modern lobby
- On-site cafe, restaurant, etc.
- LEED® Gold Certified
- Energy Star Rating
- Newly renovated common area & restrooms
- Modernized elevator systems
- Close proximity to restaurants, world-renowned boutiques



## Upcoming multi-million dollar exterior renovation at 9595

View Smart Windows will create a high-tech, personalized experience like no other.

These floor-to-ceiling windows use artificial intelligence to automatically adjust in response to the sun. No squinting. No sweating. No blinds. Ever. Just gorgeous views and happier, healthier, more productive tenants.

Installation Delivery: June 2025

**TO LEARN MORE, PRESS HERE.**



BEFORE



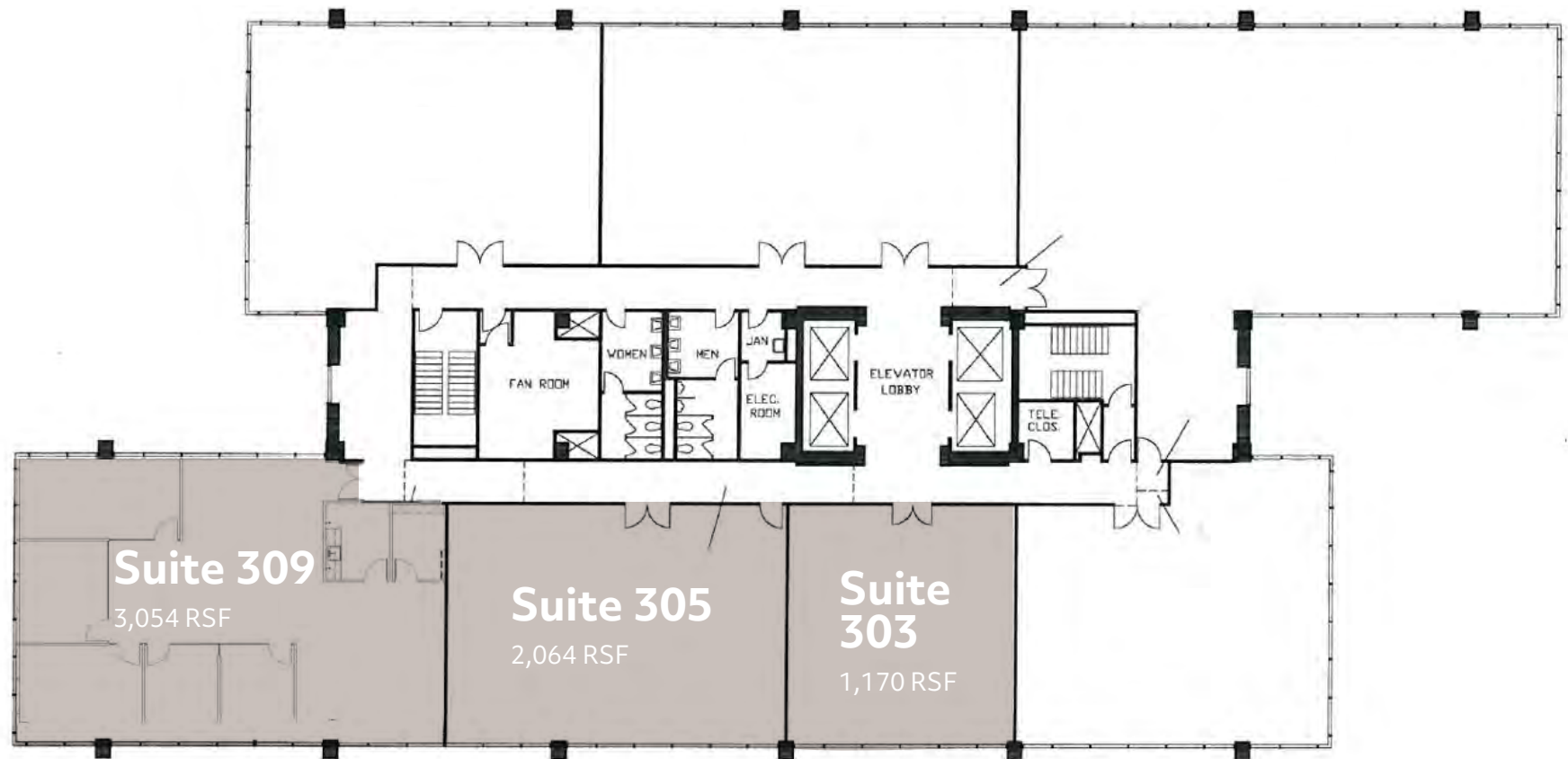
AFTER

# Availabilities

SECURE SPACE IN BEVERLY HILLS'  
MOST PRESTIGIOUS LOCATION

## 3<sup>rd</sup> Floor

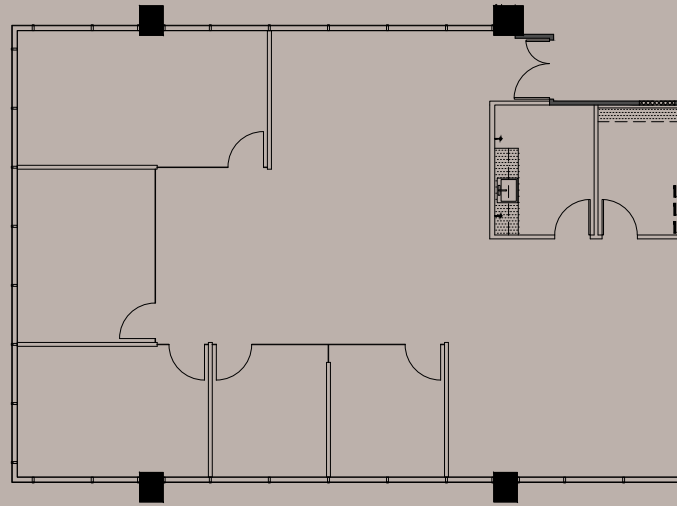
\*contiguous up to 6,288 SF



# HIGH-END SPEC SUITE - 4 PRIVATE OFFICES, KITCHENETTE, CONFERENCE ROOM

## Suite 309

3,054 RSF



[View Virtual Tour](#)



# S U I T E

8 PRIVATE OFFICES, KITCHENETTE, CONFERENCE ROOM

## Suite 400

2,917 RSF



[View Virtual Tour](#)

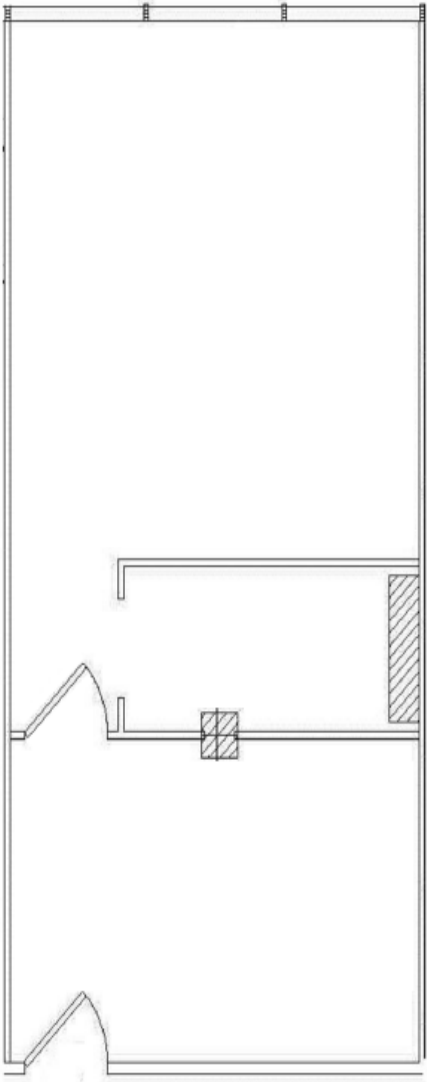




1 PRIVATE OFFICE, RECEPTION AREA

# Suite 409

665 RSF

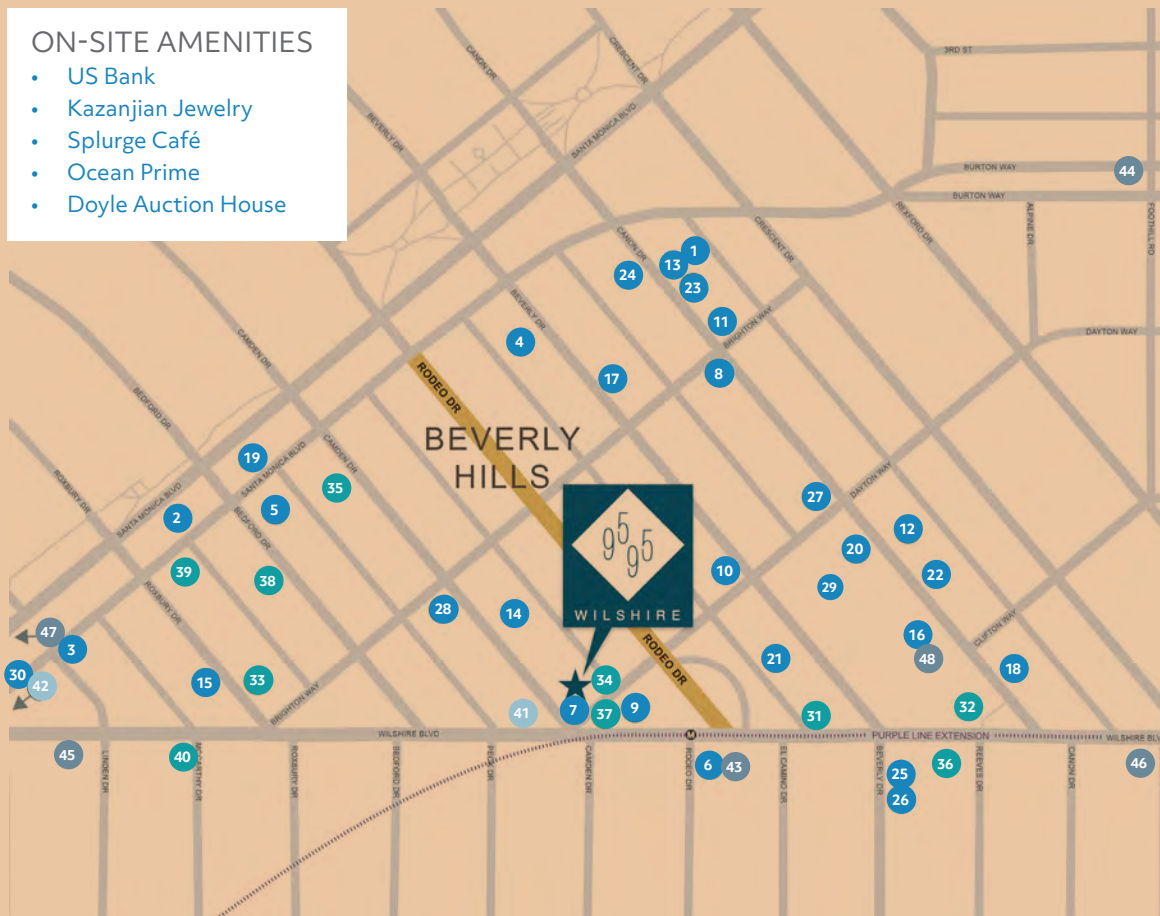


# Upscale and Unparalleled

Work just steps from hundreds of premier shopping, service and dining options, including the renowned destinations of Rodeo Drive.

## ON-SITE AMENITIES

- US Bank
- Kazanjian Jewelry
- Splurge Café
- Ocean Prime
- Doyle Auction House



## Restaurants

- 1 Funke
- 2 Yazawa
- 3 Espelette
- 4 The Farm of Beverly Hills
- 5 Crustacean
- 6 The BLVD Lounge
- 7 Ocean Prime
- 8 E. Baldi
- 9 The Grill
- 10 Il Fornaio
- 11 Il Pastaio
- 12 Mastro's Steakhouse
- 13 La Scala
- 14 Mr Chow
- 15 Mickey Fine
- 16 Dante Beverly Hills
- 17 Nate'n Al
- 18 Spago
- 19 Sprinkles Cupcakes
- 20 Palm Restaurant
- 21 AVRA
- 22 Sugarfish
- 23 Porta Via
- 24 Wally's
- 25 The Honor Bar
- 26 South Beverly Grill
- 27 Via Alloro
- 28 Brighton Coffee Shop
- 29 Sur Le Vert Wine Bar
- 30 La Dolce Vita

## Banks

- 31 Chase Bank
- 32 Citi
- 33 City National Bank
- 34 US Bank
- 35 Wells Fargo
- 36 Bank of America
- 37 First Republic Bank
- 38 HSBC
- 39 Comerica
- 40 Manufacturers Bank

## Recreation

- 41 Equinox
- 42 Natural Pilates

## Hotels

- 43 Beverly Wilshire
- 44 L'Ermitage Beverly Hills
- 45 The Peninsula
- 46 SIXTY
- 47 Waldorf Astoria
- 48 The Maybourne Hotel





WILSHIRE

**For more details:**

**ROCKY BINSWANGER**

Senior Vice President

+1 310 743 6641

[rocky.binswanger@cbre.com](mailto:rocky.binswanger@cbre.com)

**DAVID FREITAG**

Senior Vice President

+1 310 550 2690

[david.freitag@cbre.com](mailto:david.freitag@cbre.com)

**KAYLA RIX**

Associate

+1 310 228 2113

[kayla.rix@cbre.com](mailto:kayla.rix@cbre.com)



© 2023 CBRE, Inc. All rights reserved. This information has been obtained from reliable sources but has not been verified for accuracy or completeness. CBRE, Inc. makes no guarantee, representation, or warranty and accepts no responsibility or liability for the accuracy, completeness, or reliability of the information contained herein. You should conduct a careful, independent investigation of the property and verify all information. Any reliance on this information is solely at your own risk. CBRE and the CBRE logo are service marks of CBRE, Inc. All other marks displayed on this document are the property of their respective owners, and the use of such marks does not imply any affiliation with or endorsement of CBRE. Photos herein are the property of their respective owners. Use of these images without the express written consent of the owner is prohibited.

**CBRE**