

Uni Cote®

Coloured steel with
hot-dipped aluminium
and zinc alloy for
excellent durability.

unicote.com.au



SELECTION STEEL

A dependable, durable alternative

Australia's fastest growing nationally based Independent Steel Distributor has partnered with one of the world's largest pre-painted steel companies.

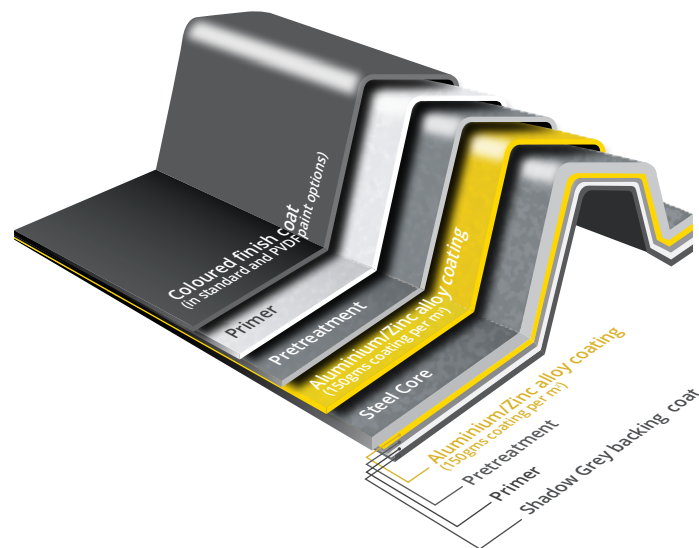
UniCote® is an affordable quality pre-painted metal product tested and manufactured for the harsh Australian conditions.

- **UniCote®** is highly durable and flexible with premium weather resistant properties. The paint system is proven to provide resistance to chipping, peeling or cracking along with offering excellent colour retention and high formability.
- Enhances design opportunities, providing strength and great appearance, combined with a competitive edge in price and quality.



Leading global innovation
in pre-painted steel

UniCote® is highly durable and desirable. Designed for long-lasting colour retention and formability, it can be easily rollformed to the profile of your choice, at a very cost-effective price.



Technical

Independently laboratory tested to comply with the AS/NZS2728:2013 performance requirements. Suitable for ISO9223:2012. Atmospheric Classifications C1 – C3.

Substrate

Hot-dipped aluminium/zinc alloy coated steel coil, 150gms/m² coating weight. Manufactured to AS 1397:2011

Pre-treatment

Corrosion resistant chromate conversion coating.

Primer

Flexible corrosion resistant chromated primer. Nominal film thickness $7\mu \pm 1\mu$ on the top side and $5\mu \pm 1\mu$ on the reverse.

Top Coat

Super Advanced Durable Polyester coating (SADP). Nominal film thickness $18\mu \pm 2\mu$

Backing Coat

Shadow Grey (standard colour) wash coat, $5\mu \pm 1\mu$ nominal thickness.

Gloss

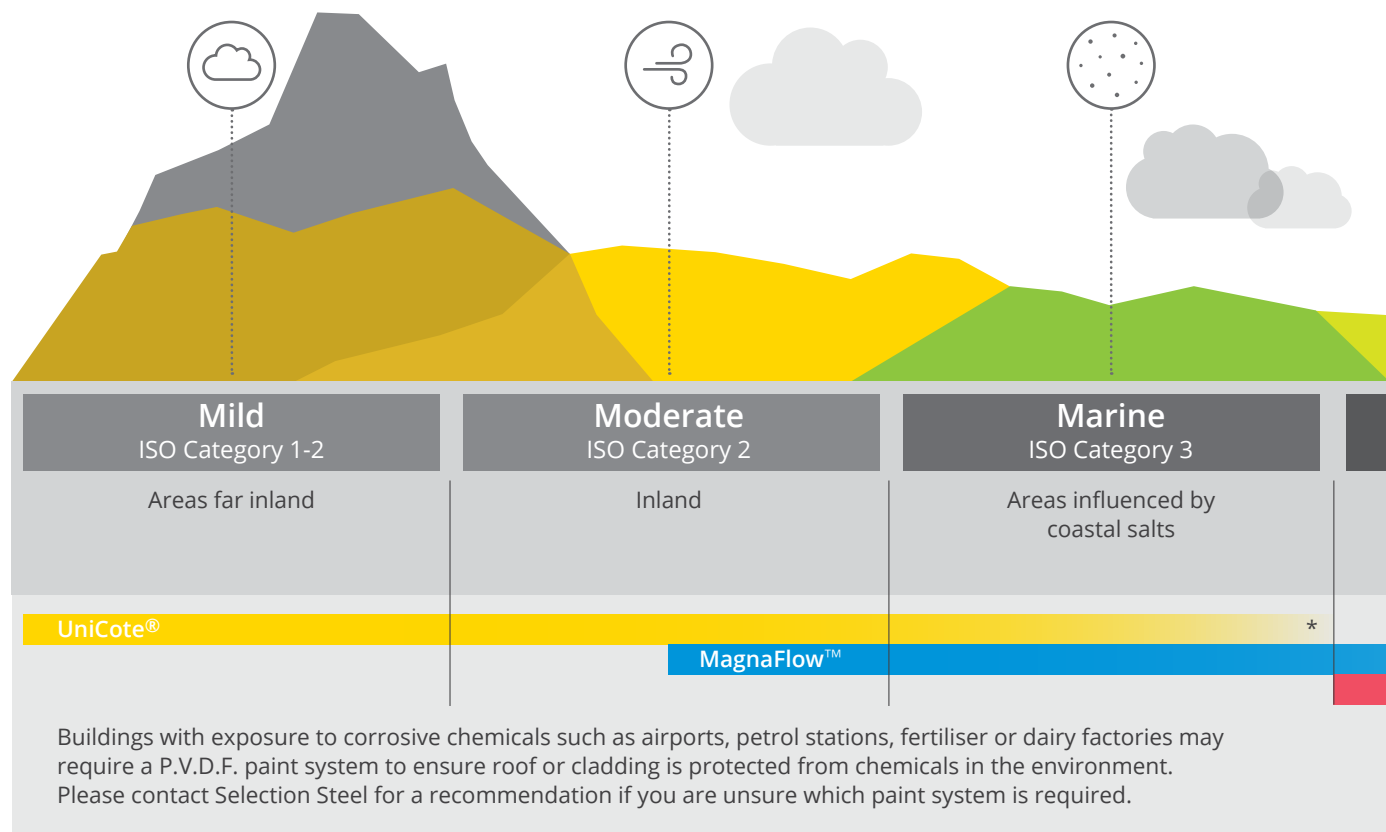
Typical gloss levels are 25%, 55% and 80% $\pm 5\%$ measured in accordance with AS/NZS 1580.602.2 (60 degrees).

Strippable Film

Products are supplied with an easily removed strippable protective film. This material has a relatively short life span when exposed to sunlight and weather. It should be removed either just before, or immediately after installation.

Atmospheric environments

Usage guide



UniCote® performance testing



Scratch resistance

Good scratch resistance. Testing includes needle scratch test – no marking of paint surface when a needle with up to a 2kg weight attached is drawn across. AS 2331.4.7.



Impact resistance

No loss of paint adhesion after a test piece is struck on the reverse side with a specified force, in line with the test methodology AS/NZS2728:2013 Table 2.2 and Appendix E.



Bend test

No loss of adhesion or paint cracking when bent around a diameter equal to five times the thickness of the sheet AS/NZS2728:2013 section 2.6.1 and Appendix F.



Heat resistance

Suitable for continuous service up to 100°C. Continuous service at higher temperatures may cause some colour change and damage to the paint film.



Salt spray

Meets the requirements of AS/NZS2728:2013 Sections 2.8 and 2.10.



Humidity resistance

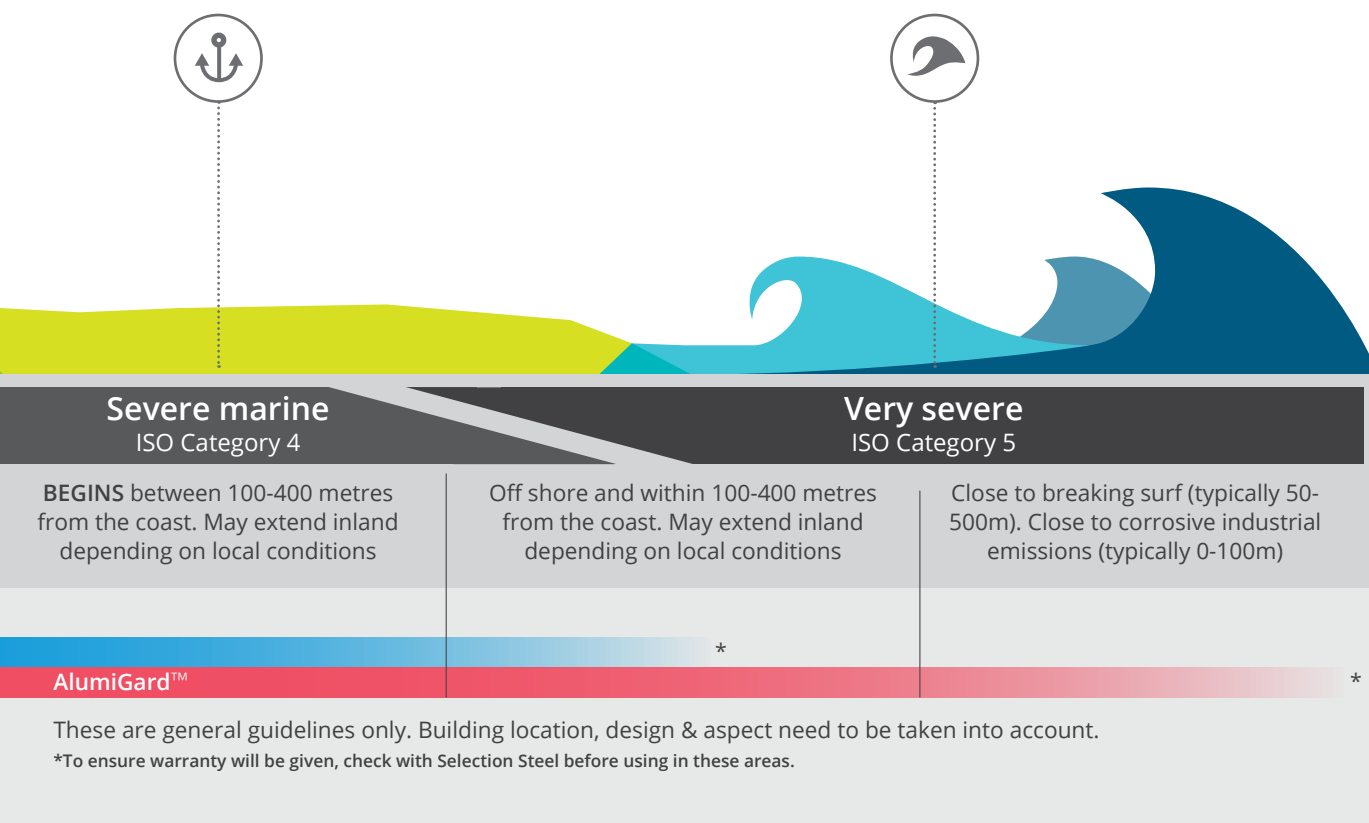
Meets the requirements of AS/NZS2728:2013 Sections 2.8 and 2.9.



QUV resistance (durability of coating system)

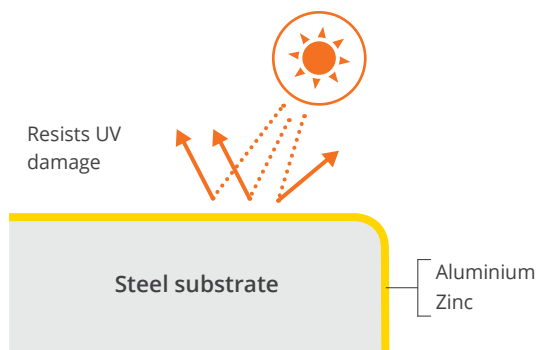
Meets the requirements of AS/NZS2728:2013 Section 2.8 and Table 2.4.

Note: Tests are conducted on a flat panel.



Built to last

UniCote® uses a hot-dipped aluminium/zinc alloy-coated steel substrate. The outer layer is a polyester top coat, using the latest infrared reflective pigments, baked on to a polyester primer. The result is an extremely durable paint system built to resist UV damage from Australia's harsh sun, providing excellent colour and gloss retention.



If your site matches the climatic conditions (pictured above) and you want roofing and cladding that will retain its good looks and protect for many years at a very affordable price, this could be the right product for your project.

Warranty terms

Selection Steel offers warranties of differing lengths on UniCote® for residential, commercial and industrial buildings in ISO 1-3 environments, depending on whether the product will be used for roofing or cladding.

		Environment (ISO CAT) 1-3
Roofing*	Paint	20 yrs
	Perforation	30 yrs
Wall cladding*	Paint	15 yrs
	Perforation	15 yrs
Fascia Gutter Downpipes*	Paint	20 yrs
	Perforation	20 yrs

*Applicable to areas over 1km from Marine and Industrial environments. Refer to specific warranty information for full terms and conditions, including exclusions and minimum maintenance requirements. Buildings close to industrial areas which are exposed to corrosive chemicals may require P.V.D.F. for added protection. Visit unicote.com.au and complete the warranty enquiry form.

Performance

Outdoor durability

UniCote®, under normal well washed conditions of exposure, can be expected to show no cracking (other than that which may occur during forming), flaking or peeling of the paint film for 20 years from the date of installation.

Colour change during service will depend on the colour chosen, aspect, design of the structure and the environment.

Some chalking may occur. A maximum rating of 2 is expected after 20 years exposure, when measured in accordance with AS/NZS1580.481.1.11:1998.

Scale is between 0 and 5 with a lower number indicating less chalking.

The above are subject to minimum maintenance requirements.

Recommended end uses

UniCote® has very good colour and gloss retention and is suitable for roofing, cladding, rainwater goods and sheds. UniCote® is ideal for interior uses and exterior environments where corrosion levels are moderate.

For information concerning product use in areas not covered by UniCote®, refer to the MagnaFlow™ or AlumiGard™ technical information brochure.

Roof pitch

For low-pitched roofs do not use a pitch less than the following:

- Standard corrugated profile – 5°
- Standard five rib profile – 2°
- Standard concealed fix profile – 1°

Following these guidelines will avoid ponding and premature degradation of the coating system. If anything in this section pre-empts a potential issue, talk to your architect, builder or roofer, or contact us.

Handling and rollforming

To avoid damaging the paint surface the material must be handled carefully during transport and rollforming.

Selection Steel does not recommend the use of rollforming lubricants on UniCote® products.

The use of rollforming lubricants will affect performance of pre-painted metal and will lead to staining and uneven premature fading.





Important

UniCote® is not suitable for use in the following situations:

- Animal shelters where excessive ammonia fumes can accumulate due to inadequate venting, or where direct contact with animal effluence can occur.
- Water tanks or areas where a constantly wet environment is maintained.
- In direct contact with concrete or where lime deposits are evident.
- In contact with soil (allow a 75mm run off below cladding sheets to ground level).
- For areas not covered by UniCote®, refer to the Magnaflow™ or Alumigard™ technical information brochure.

Touch-up paint

UniCote® is a baked on paint system which has different weathering characteristics to standard air drying paints. **Do not use touch-up paint on UniCote® products.** Minor scratches should be left alone.

Clean up

Installation procedures involving self-drilling screws, drills and hacksaws etc will leave deposits of swarf and metal particles. These particles including blind rivet shanks, nails and screws should be swept and removed from the roof.





Storage of coil

- Unrolled coils should not be allowed to get or stay wet. Rain or condensation can be drawn between the surfaces by capillary action. This can cause deterioration of the coating.
- Rollforming performance may be affected if coils are stored longer than 12 months.

Site practice

If nestable profiles become wet while closely stacked, formation of wet storage stain or 'white rust' is inevitable.

To minimise the possibility of inadvertent damage:

- **Inspect deliveries on arrival.** If moisture is present, individual sheets should be dried immediately with a clean rag and then stacked to allow air to circulate and complete the drying process.
- **Well ventilated storage is essential.** Always store metal products under cover in clean, well-ventilated buildings.
- **Cross stack or fillet sheets.** Make provision for water to run off where outside storage is unavoidable.

It is the responsibility of the roofing contractor to avoid damaging the roof sheeting during its installation and fixing. Never drag sheets from a pile. Remove by 'turning off' the stack. Lift sheets onto the roof and do not drag over the eaves or the purlins. Use clean footwear. Remove swarf and other contaminants regularly.



Dissimilar metals

When dissimilar metals come into contact with each other, the electric potential difference between the metals establishes a corrosion cell and accelerated corrosion can occur.

To avoid this problem, the following precautions should be observed:

- Avoid discharges of water from brass or copper pipes on to UniCote®.
- Do not use non-galvanised steel, copper, brass, lead, stainless steel or monel metal in direct contact with UniCote®.
- Do not use lead flashings in contact with UniCote® products. Soft edge aluminium or notching of flashings are the best solutions.
- Tanalised timber contains copper, so must not be used in direct contact with UniCote® products. Use PVC tape or similar barrier to isolate potential problem points of contact between materials.
- To maintain warranty status and avoid mismatching of colour, do not mix UNICOTE® steel with another colour steel product in any one application or plane. For further clarification please contact Selection Steel.

Fastenings

Class 4 coated screws are recommended for UniCote® and will give the best service life.

Do not use stainless steel or monel fasteners on UniCote® products.

In all cases ensure the fasteners are installed correctly with the UniCote® product.

Sealing and jointing

Where sealed joints are required, use only neutral cure silicon rubber sealant together with mechanical fasteners, such as aluminium rivets. **Do not weld or solder UniCote® products.**

Unwashed areas

These are typically those areas that are not washed by natural rainfall, such as the underside of eaves, sheltered roofs or wall cladding, under solar panels etc. These areas are excluded from warranty. Selection Steel recommends the exclusion of unwashed areas by design wherever possible.

In cases where this is not possible, then a regular washing programme should be put in place. Contaminants should be removed by mechanical washing with water and a soft bristle brush at least every six months, or more frequently if contaminant build-up keeps occurring.

Classic Colours

UniCote® is available in an extensive range of Classic colours ensuring a solution is available for any Australian landscape.

UniCote® Classic Colours	
HERITAGE RED	
TERRITORY	
JASMIN BROWN	
SMOOTH CREAM	
OFF WHITE	
DUSK	
MERINO	
BIRCH	
GULL GREY	
ARMOUR GREY	
SLATE GREY	
BASAL	
WALLAROO	
GULF	
COVENTRY	
MANTEAL	
MIST GREEN	
CAULFIELD GREEN	
MOUNTAIN BLUE	
IRON GREY	
EBONY	
MONOLITH	

Note: All colours shown are reproduced accurately within the practical limitations of the printing process used. Slight variations may occur from the pre-painted metal.

Queensland

145 Archerfield Road
Richlands, QLD 4077
Telephone: 07 3713 0066
Facsimile: 07 3713 0077

New South Wales

15 Wonderland Drive
Eastern Creek, NSW 2766
Telephone: 02 8882 1000
Facsimile: 02 9675 2100

South Australia

519-523 Grand Junction Road
Wingfield, SA 5013
Telephone: 08 8244 8243
Facsimile: 08 8347 2966

Western Australia

10 Glassford Road
Kewdale, WA 6105
Telephone: 08 9352 9666
Facsimile: 08 9353 2444



Leading global
innovation in
pre-painted steel

Head Office

64 - 66 Ventura Place, Dandenong South
Victoria 3175 Australia
Telephone: 03 9799 6111 Facsimile: 03 9799 6444
www.selection.com.au

UniCote® is a registered trademark of Selection Steel Pty. Ltd.
Colorcote®, MagnaFlow™ and AlumiGard™ are trademarks
of Fletcher Steel Ltd.

©Copyright Selection Steel Trading 2016



SELECTION STEEL