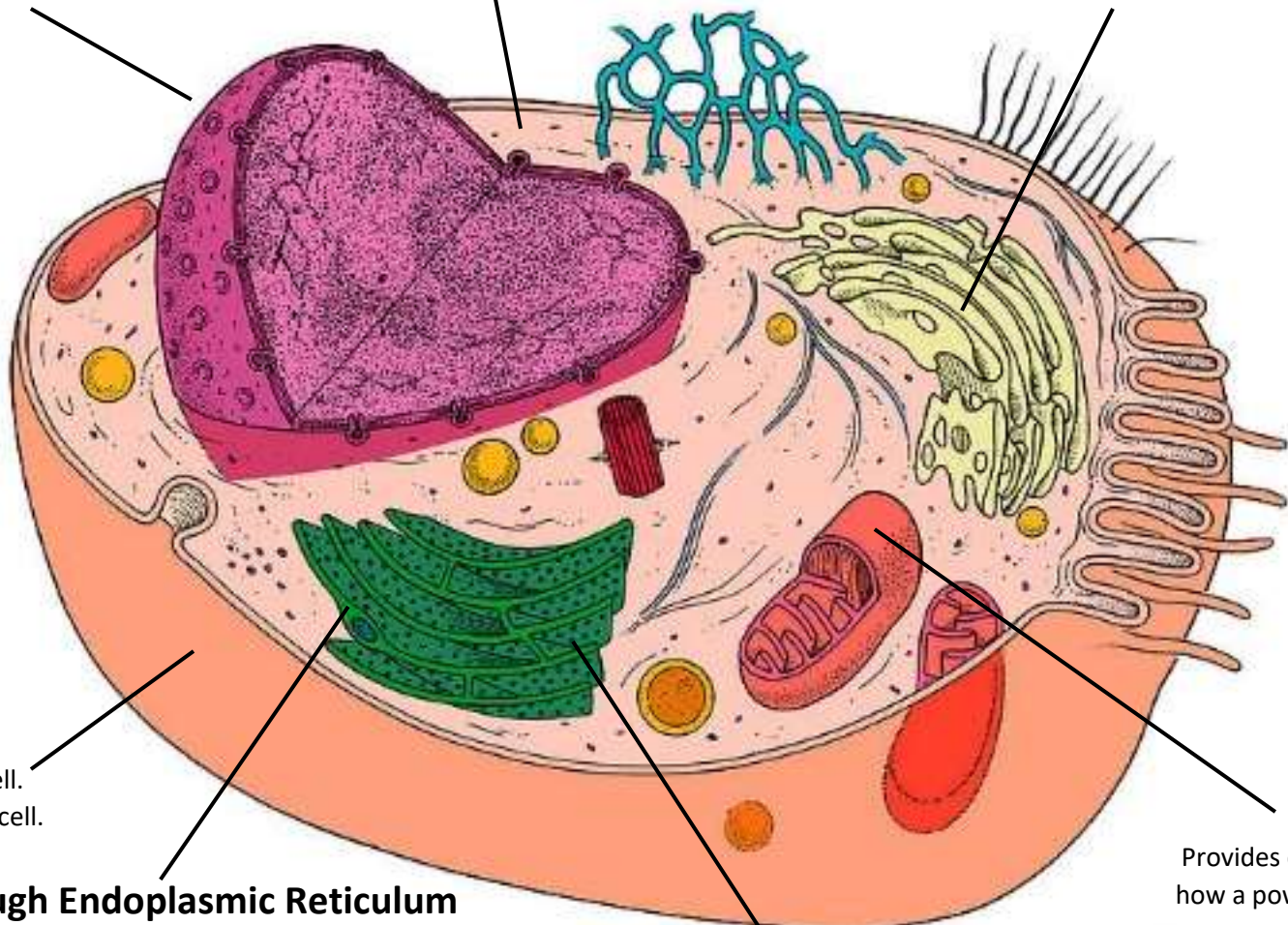


**Nucleus**  
Brain of the cell.

**Cytoplasm**  
Holds everything in the cell together.

**Smooth Endoplasmic Reticulum**  
Transports nutrients to other parts of the cell. One of the two highways of the cell.



**Cell Membrane**  
Allows good stuff into the cell.  
Gets rid of bad stuff from the cell.

**Rough Endoplasmic Reticulum**  
One of two highways of the cell. This one transports proteins made by the ribosomes to the other parts of the cell.

**Ribosome**  
Makes proteins. Proteins are essential for life. Little dots.

**Mitochondria**  
Provides energy to the cell. Kind of like how a power plant provides energy to a house.