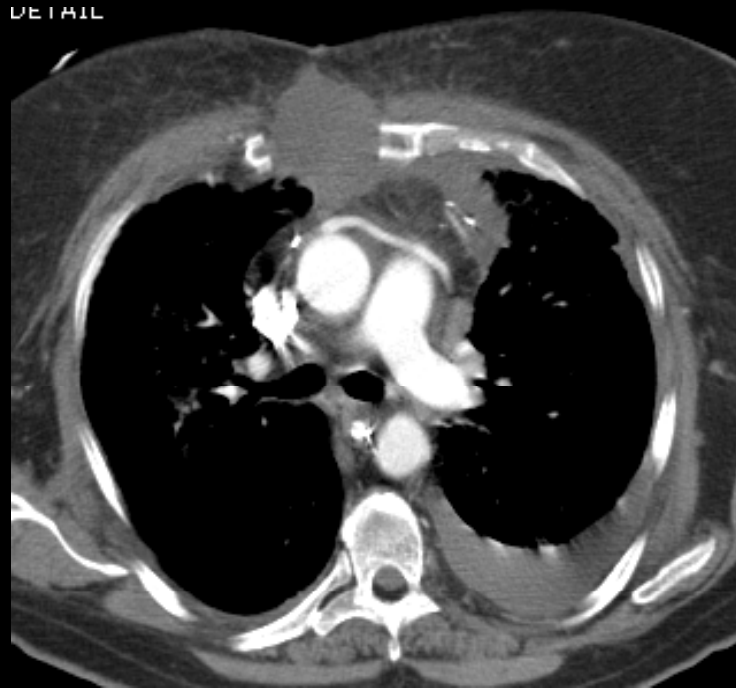
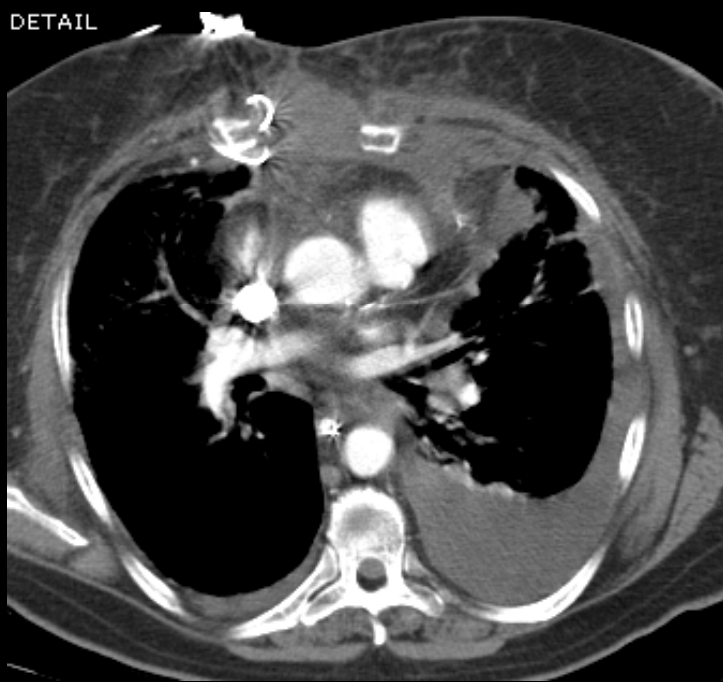


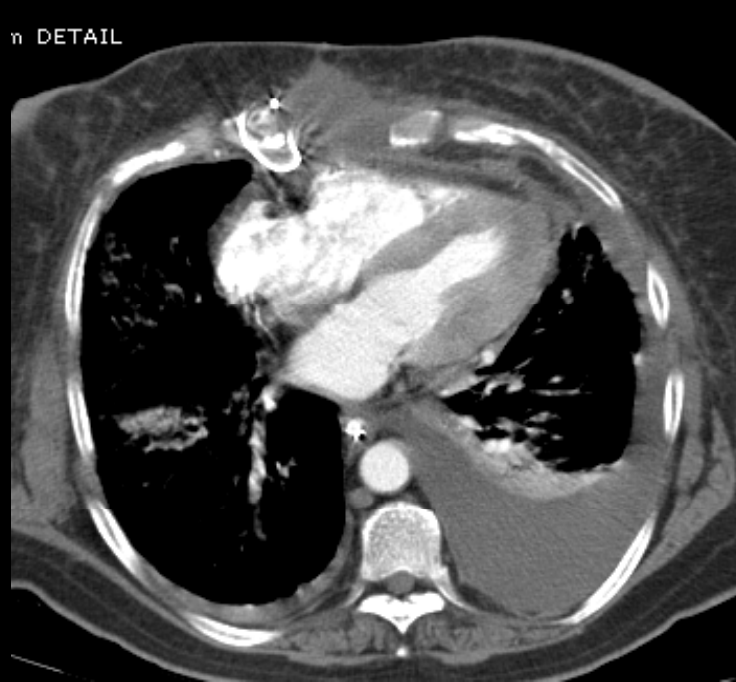
DETAIL



DETAIL



n DETAIL





Hx: 66 y/o male with S/P surgery with respiratory failure.

1.500  
m SOFT

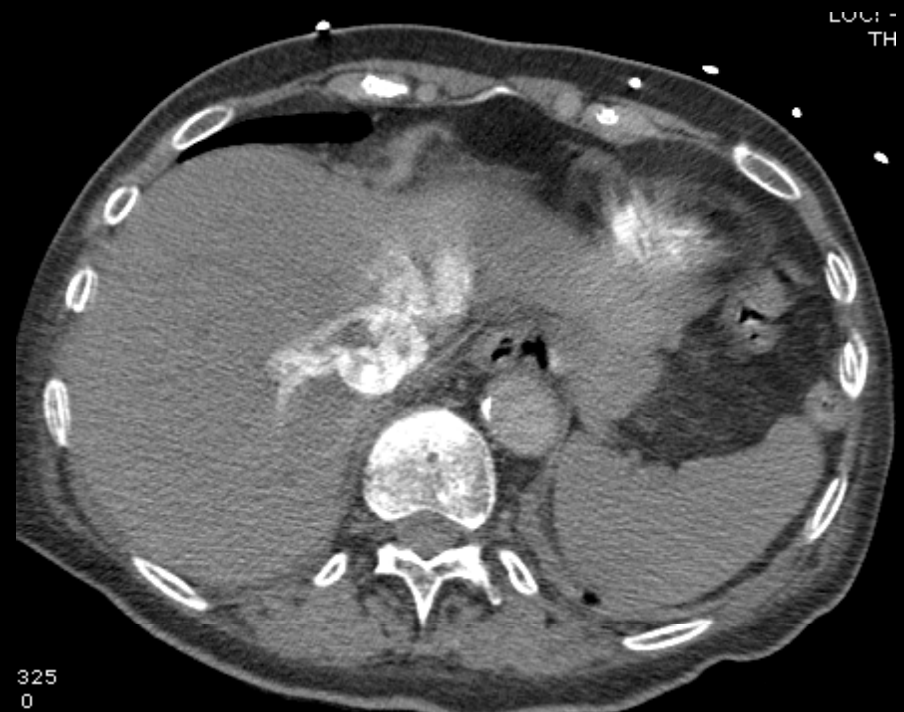
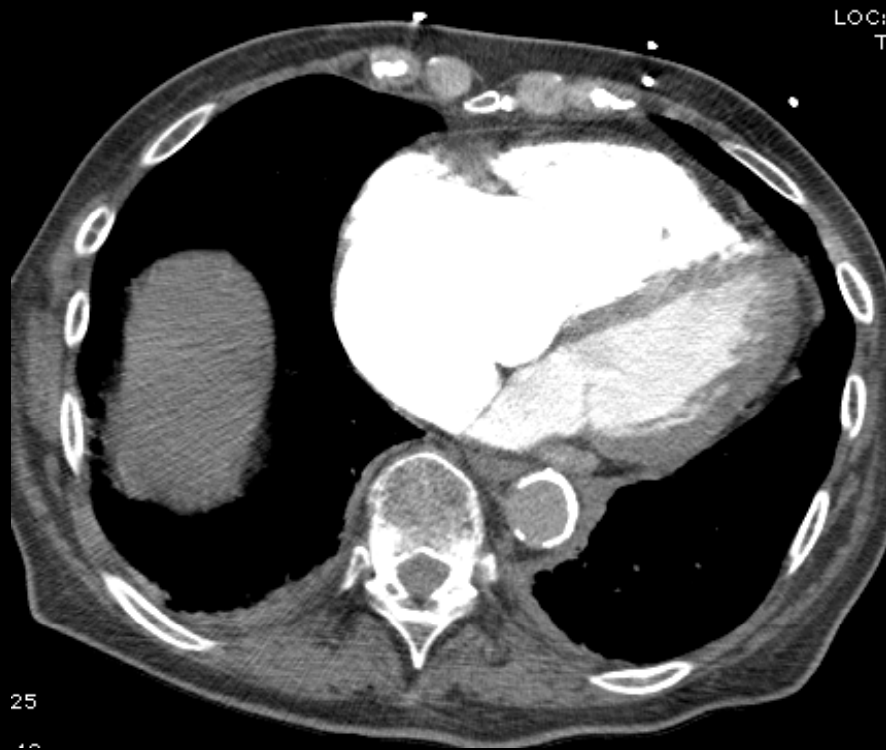




# Pulmonary Artery Catheter

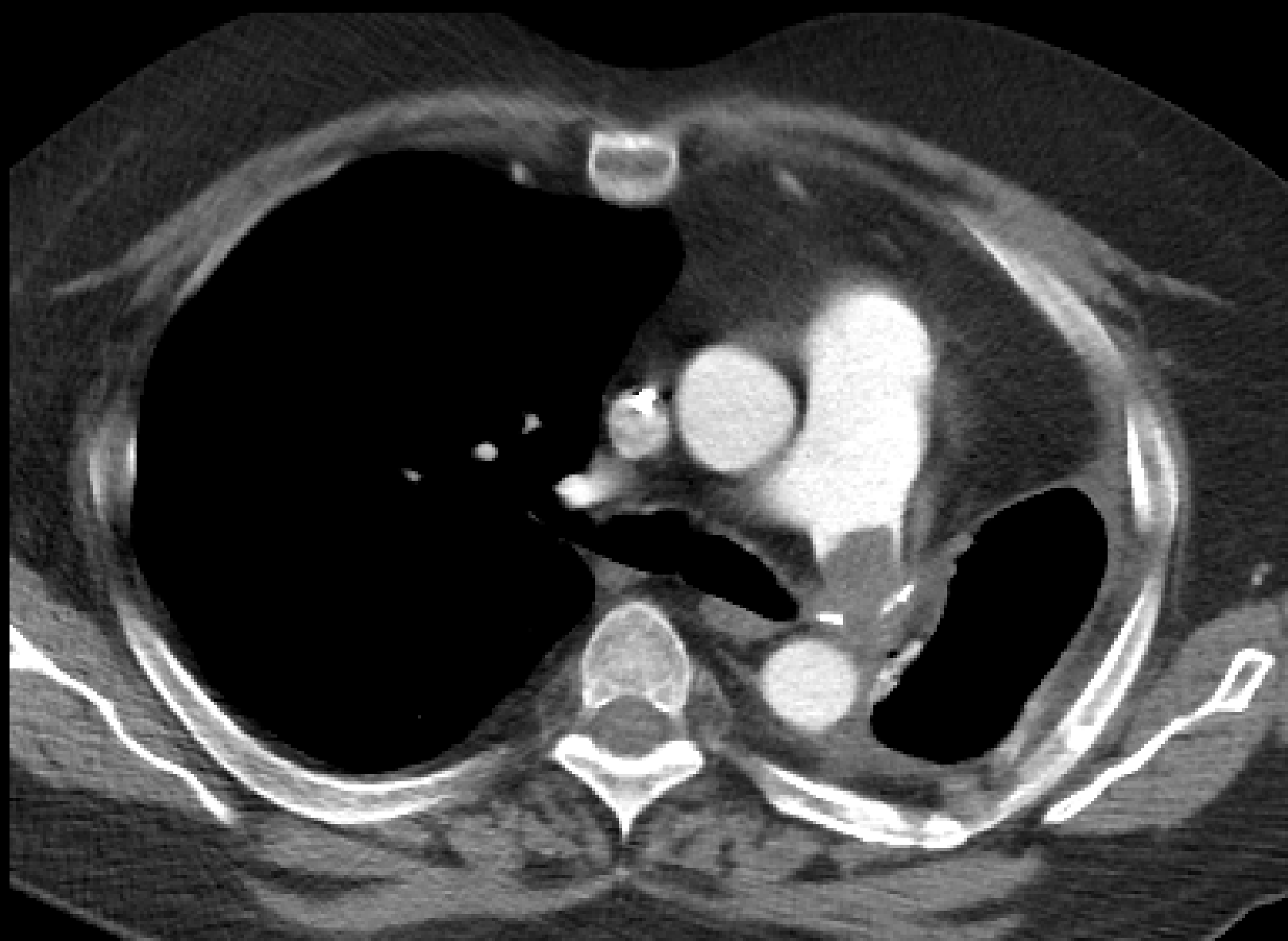


# Secondary Sign Acute PE





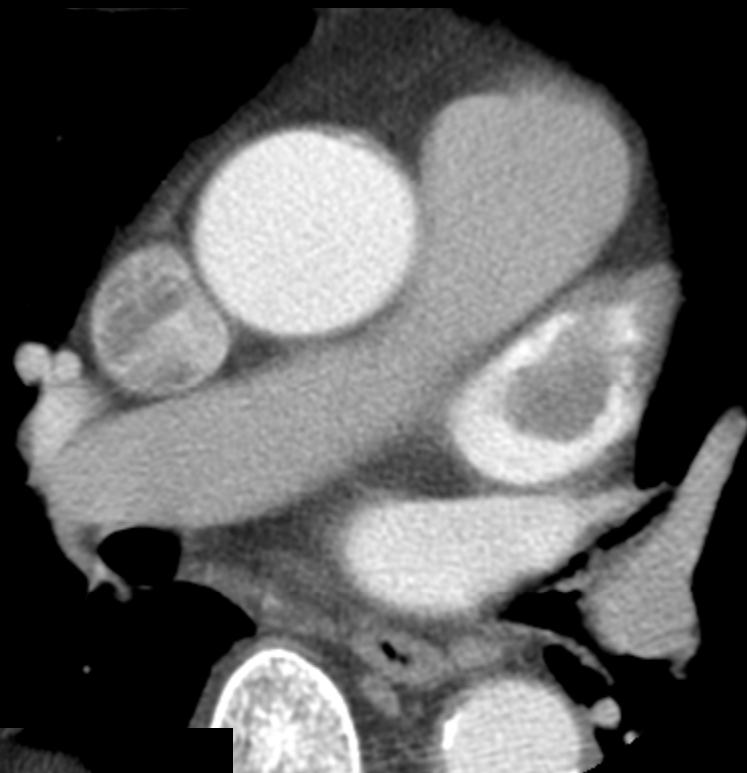




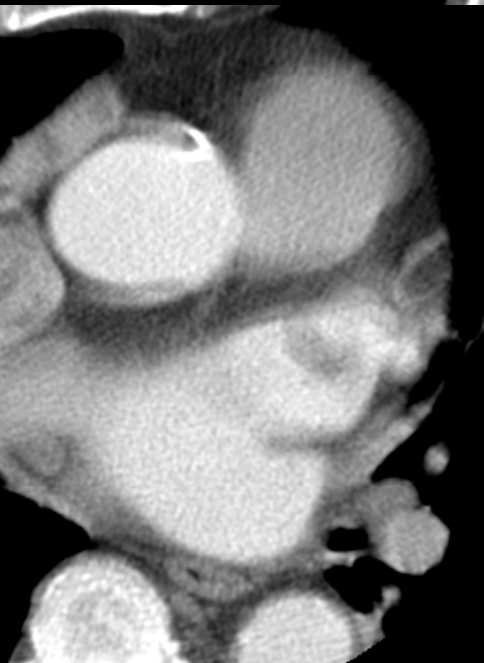


.75:1

0mm STANDARD



1.75:1





## Question #4





52 y/o with acute onset of chest pain?

- A. Pulmonary infarction
- B. Pneumonia
- C. Cryptogenic organizing pneumonia
- D. Adenocarcinoma of the lung

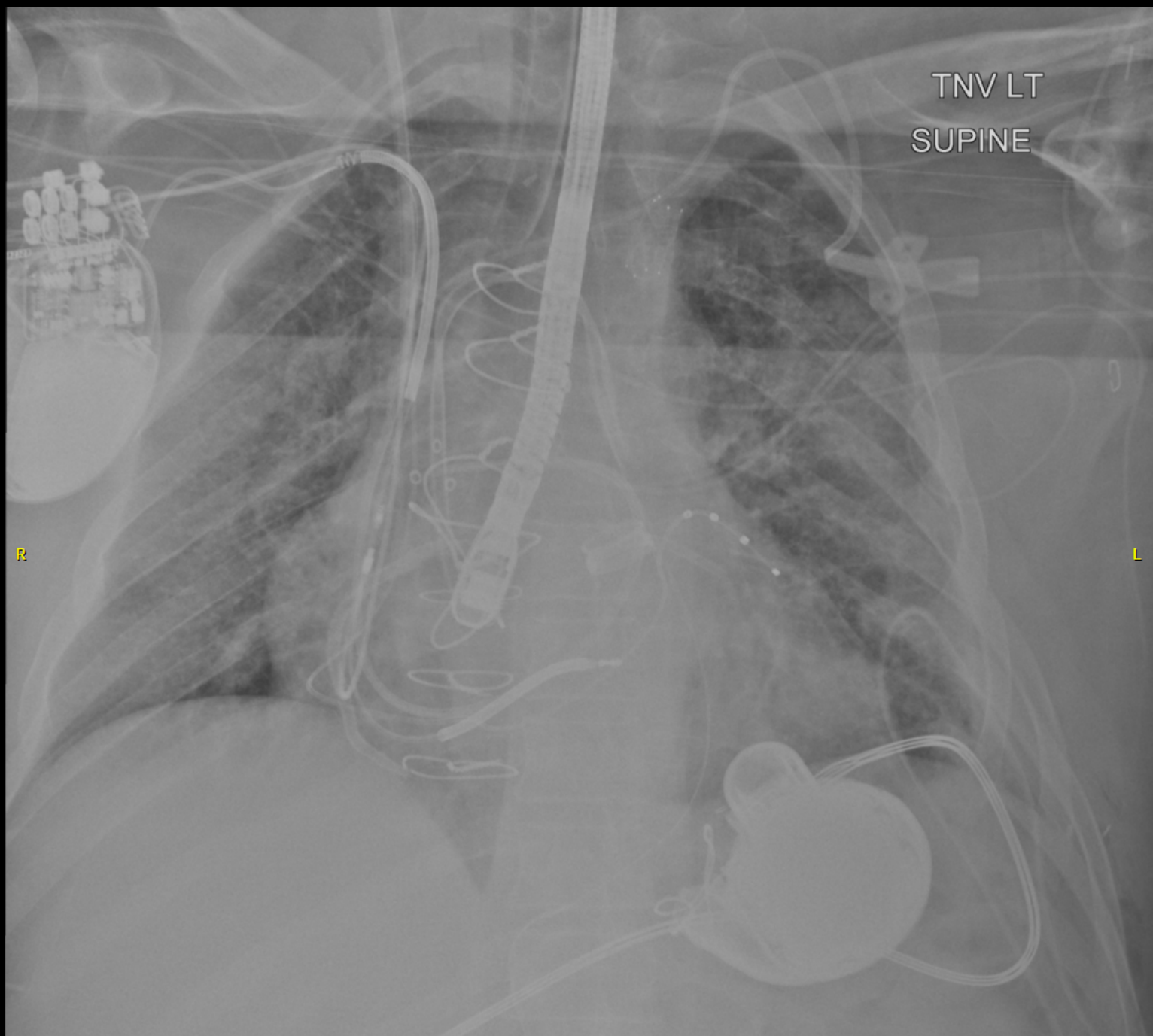
52 y/o with acute onset of chest pain?

A. Pulmonary infarction

B. Pneumonia

C. Cryptogenic organizing pneumonia

D. Adenocarcinoma of the lung



# Which of the following statements is true?

- A. ICU chest films are usually taken in the Posteroanterior (PA) view
- B. Most ICU chest films demonstrate significant findings
- C. ICU chest films are both sensitive and specific
- D. The target to film distance is unimportant

# Which of the following statements is true?

A. ICU chest films are usually taken in the Posteroanterior (PA) view

B. Most ICU chest films demonstrate significant findings

C. ICU chest films are both sensitive and specific

D. The target to film distance is unimportant

Daily portable x-rays are appropriate for which patient?

- A. 75 y/o with a central line
- B. Intubated 67 y/o suffering from COPD
- C. 24 y/o with two peripheral IV lines
- D. 89 y/o in the ICU for GI bleed

Daily portable x-rays are appropriate for which patient?

A. 75 y/o with a central line

B. Intubated 67 y/o suffering from COPD

C. 24 y/o with two peripheral IV lines

D. 89 y/o in the ICU for GI bleed