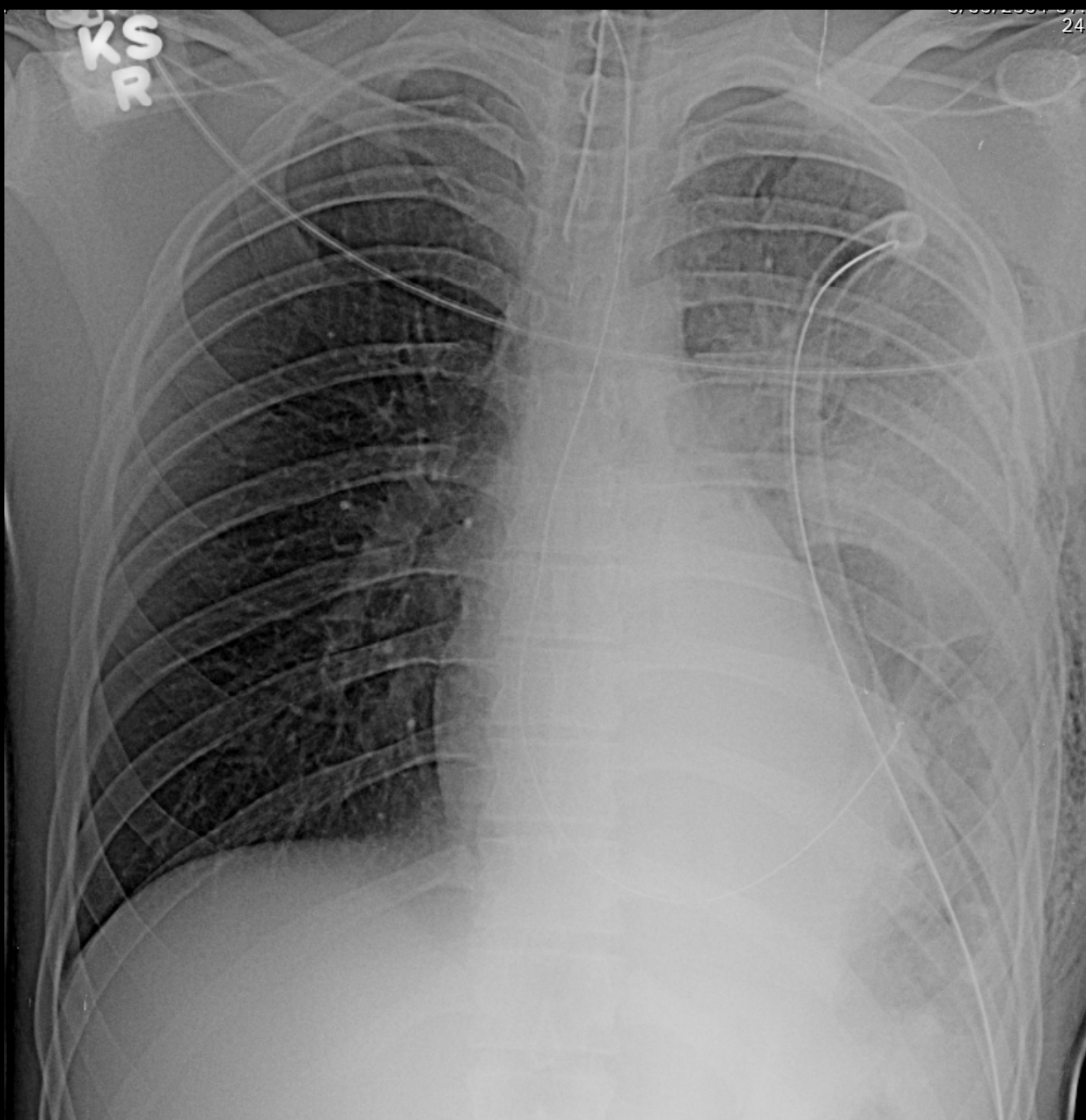
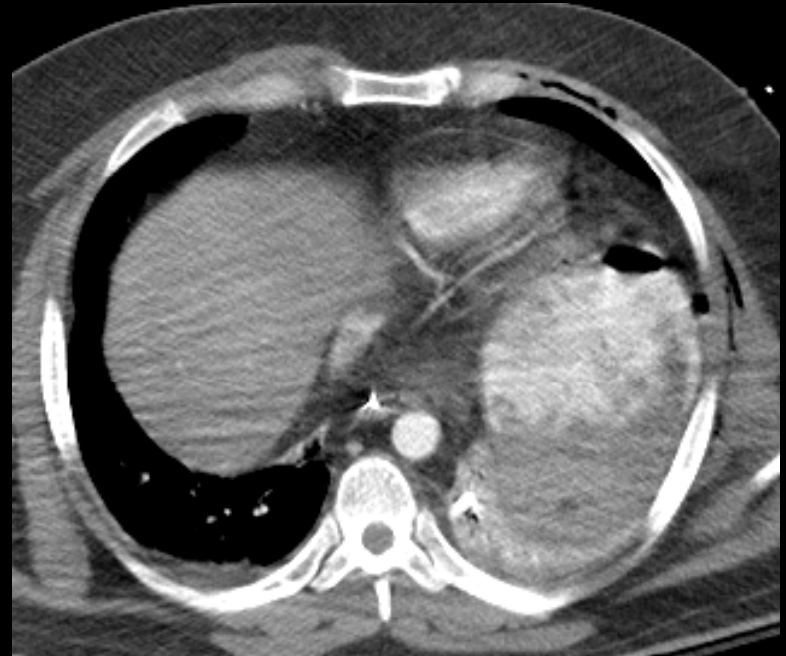
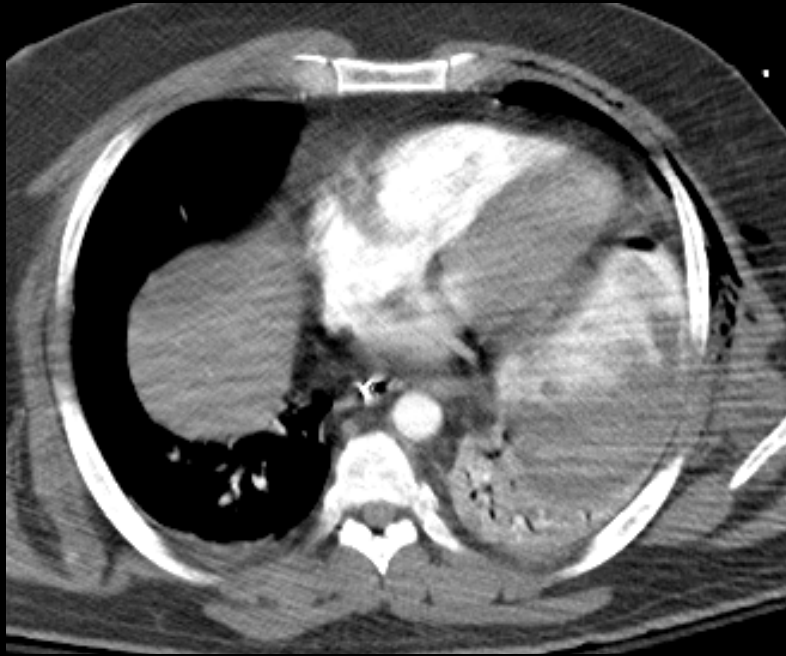


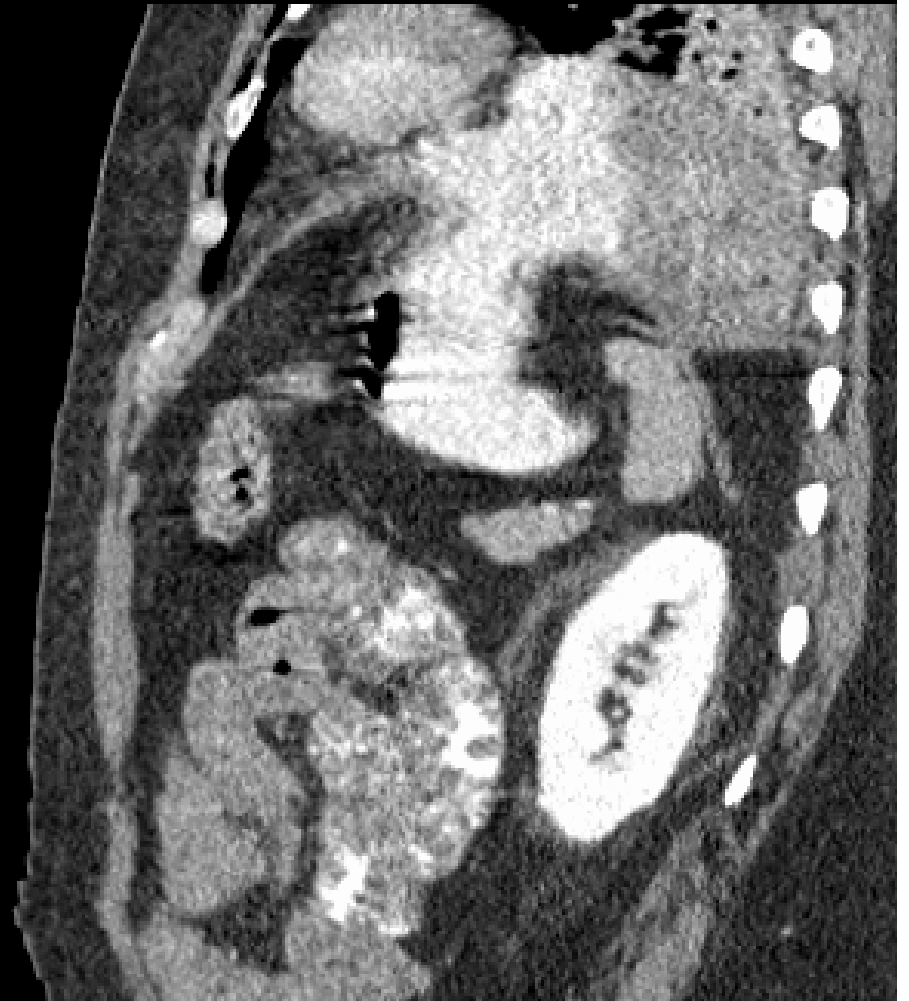


# Diaphragmatic Injury

5% blunt trauma  
90% left sided  
70% missed initially









# Lung Disease

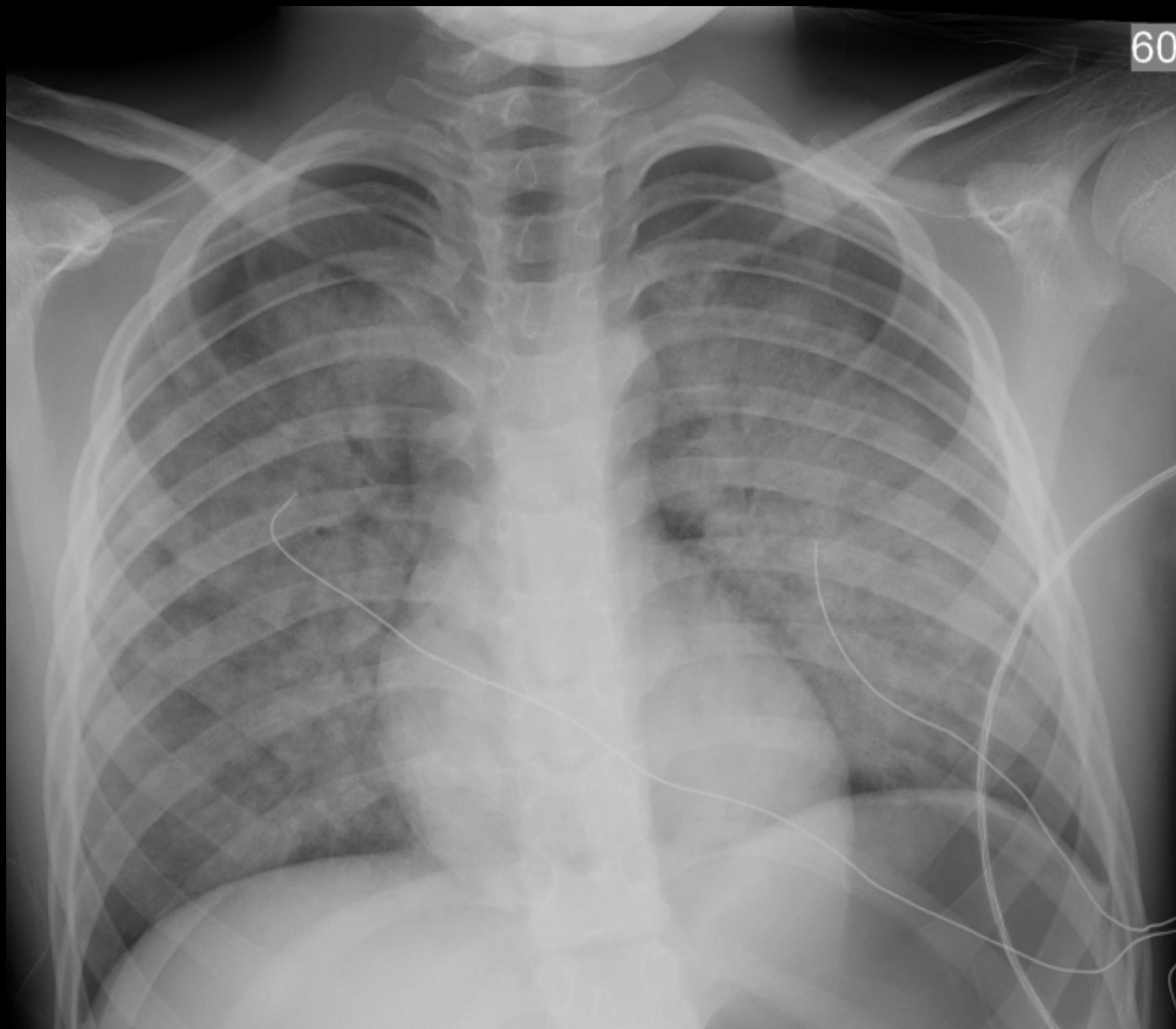


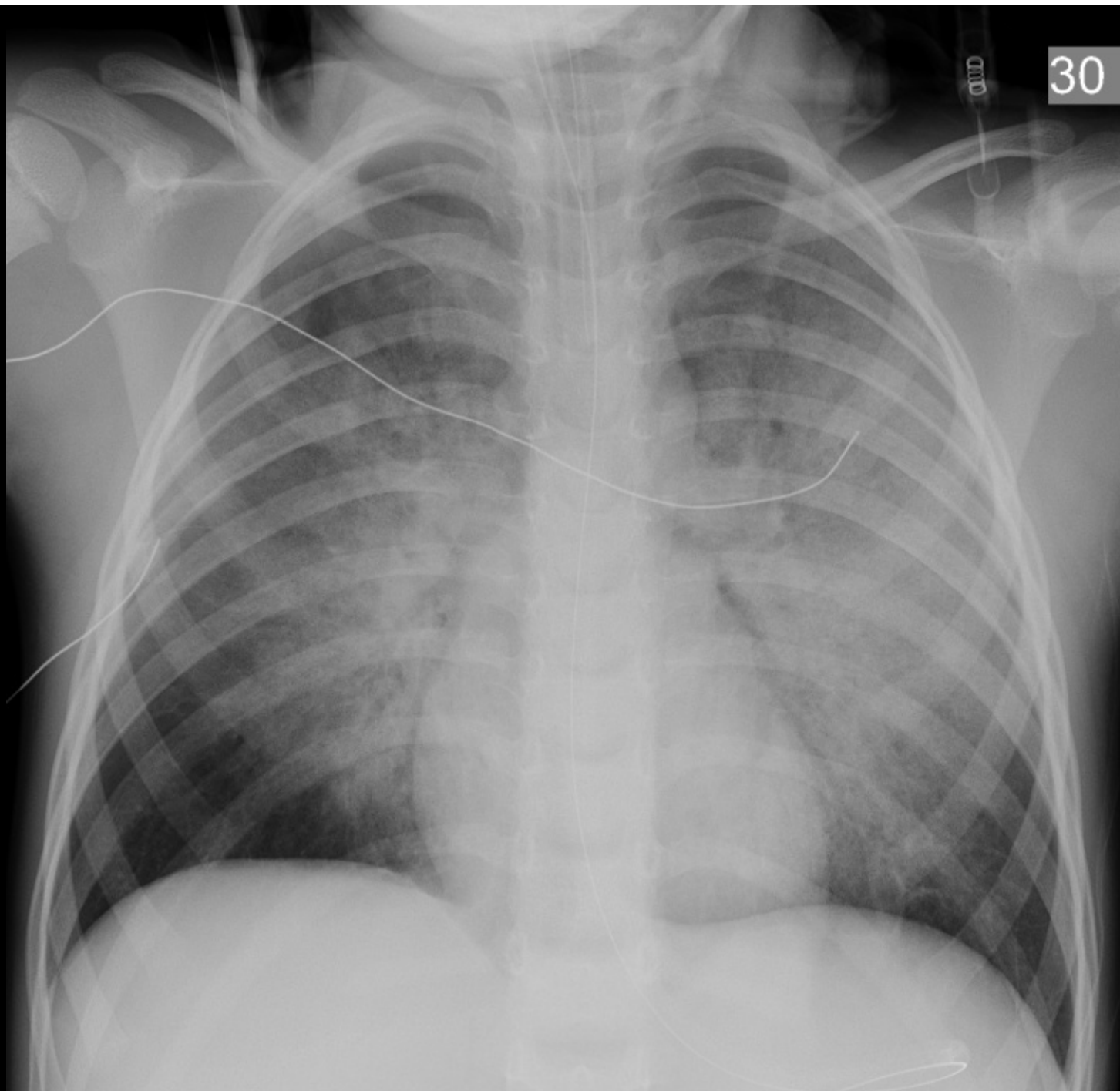


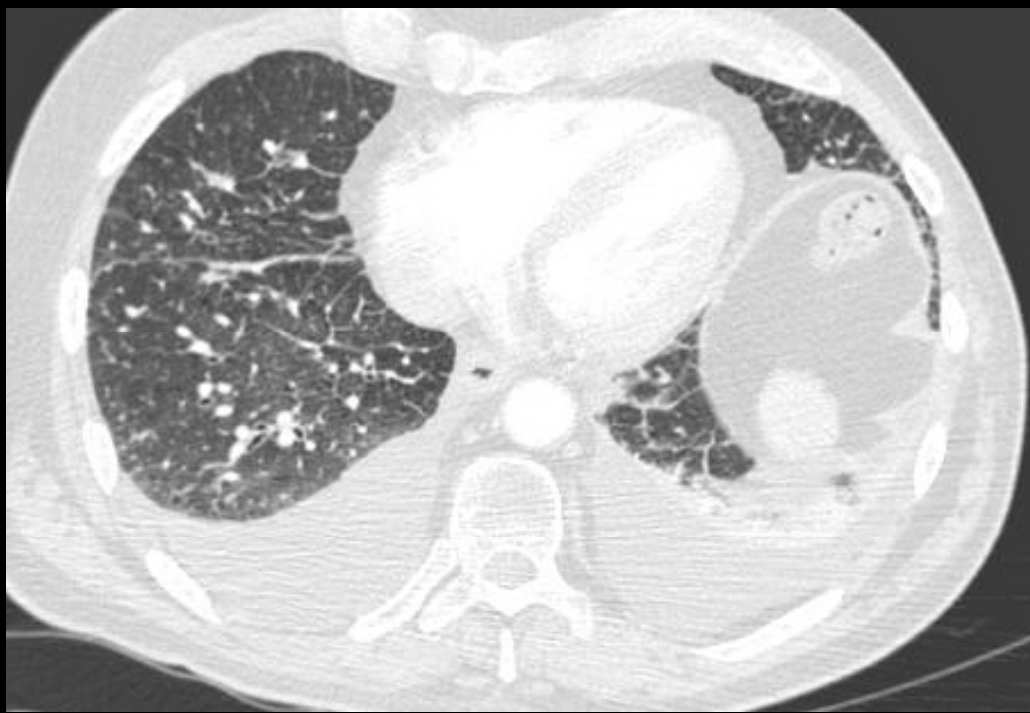








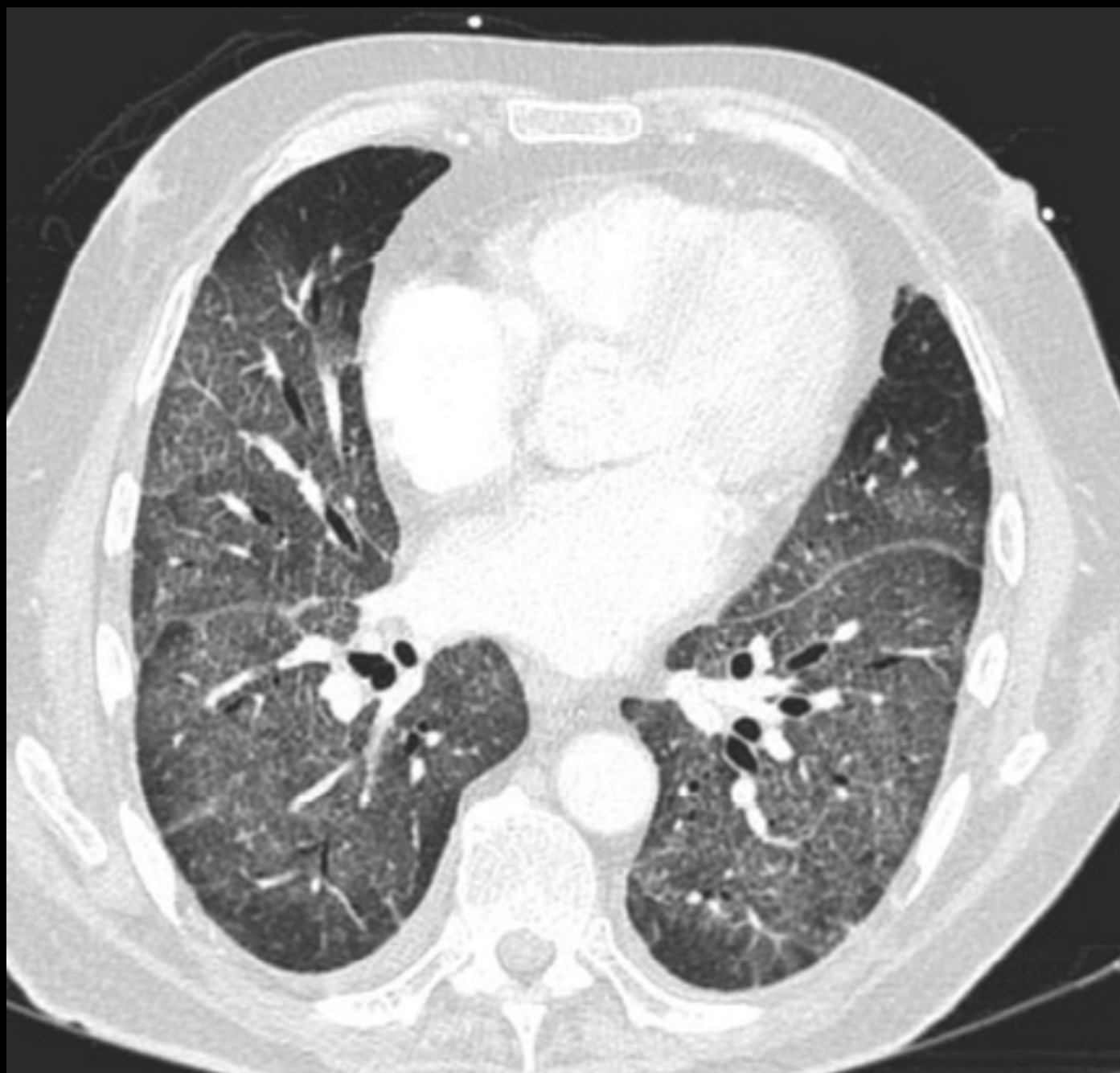












## Question #3

7 days after bone marrow transplant. What is the most likely diagnosis?

- A. Bronchiolitis Obliterans
- B. Cytomegalovirus
- C. Pulmonary edema
- D. Post-transplant Lymphoproliferative Disorder

7 days after bone marrow transplant. What is the most likely diagnosis?

A. Bronchiolitis Obliterans

B. Cytomegalovirus

C. Pulmonary edema

D. Post-transplant Lymphoproliferative Disorder

