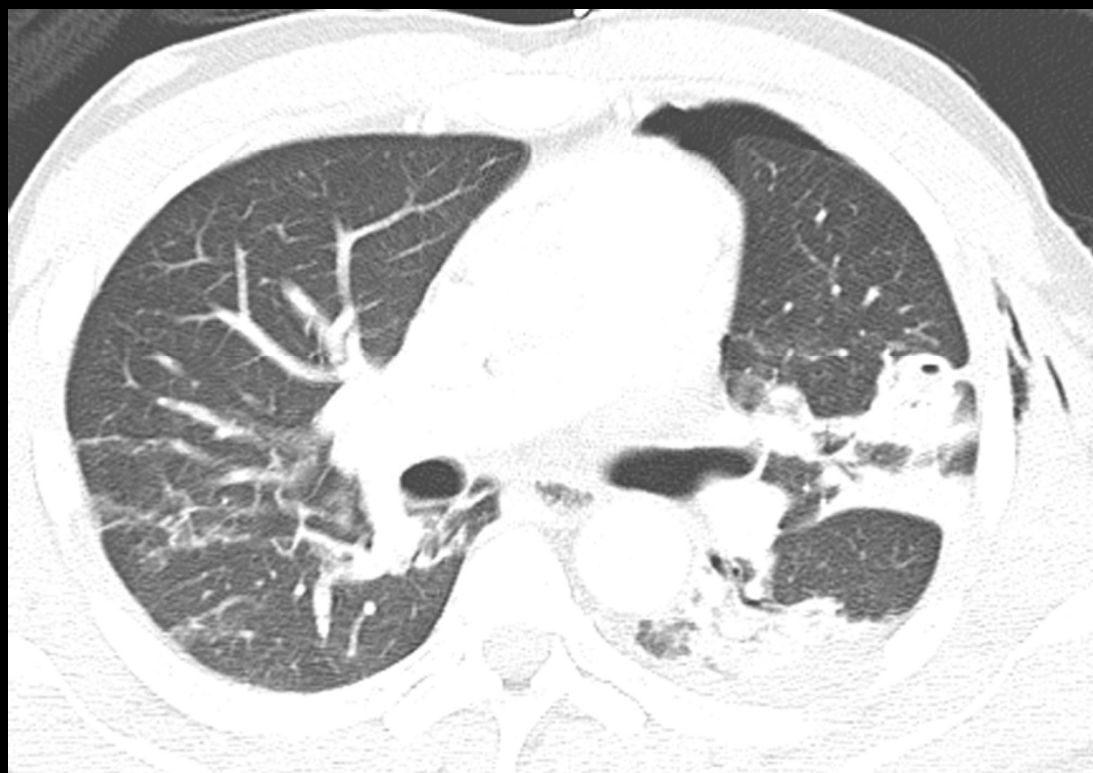






LOC: -14  
THK:









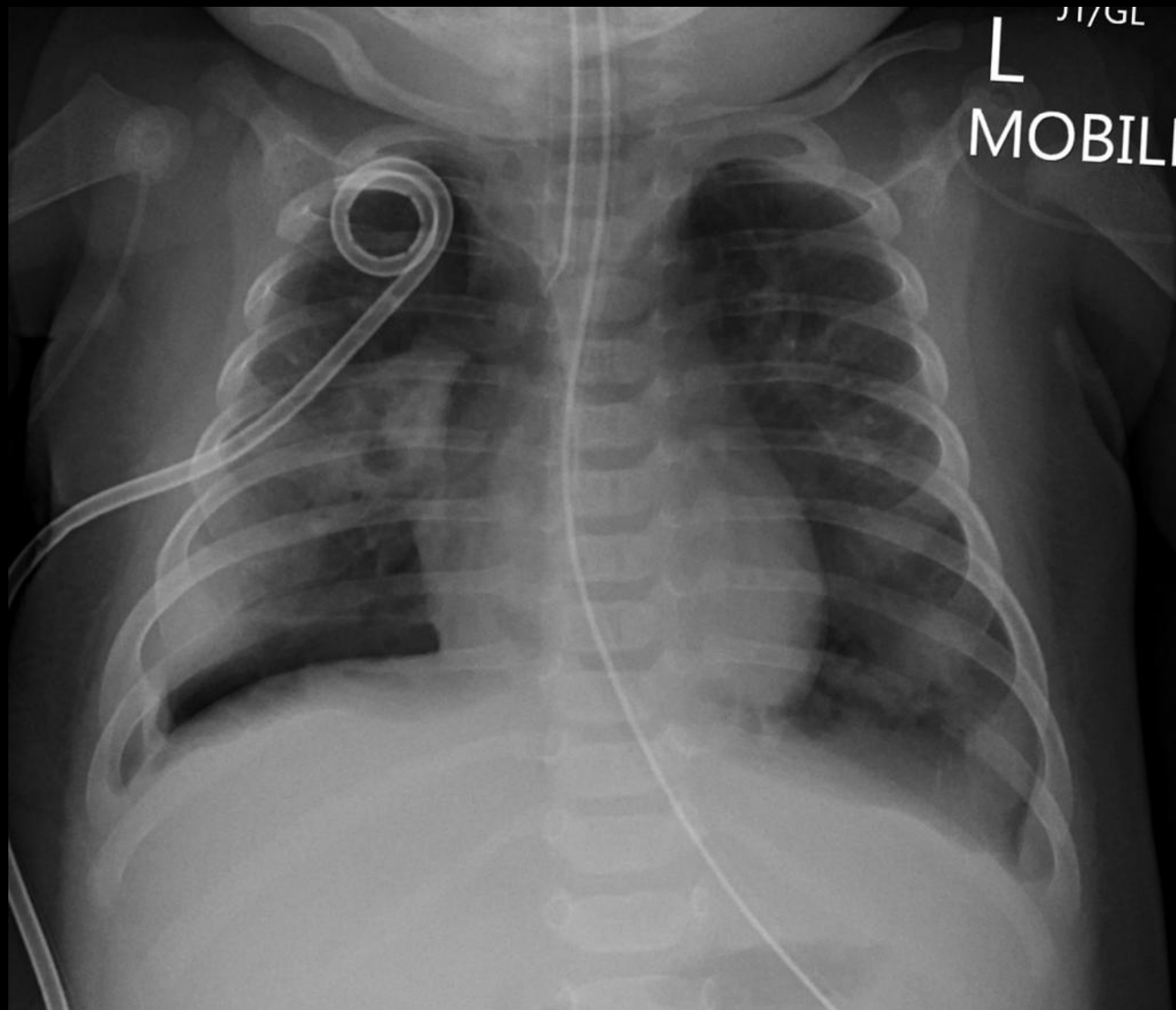
## Question #2

Which best describes the positioning of the left chest tube?

- A. Appropriately positioned; no intervention needed
- B. Intra-parenchymal; no intervention needed
- C. Intra-parenchymal; prompt removal indicated
- D. Intra-fissural; prompt removal indicated

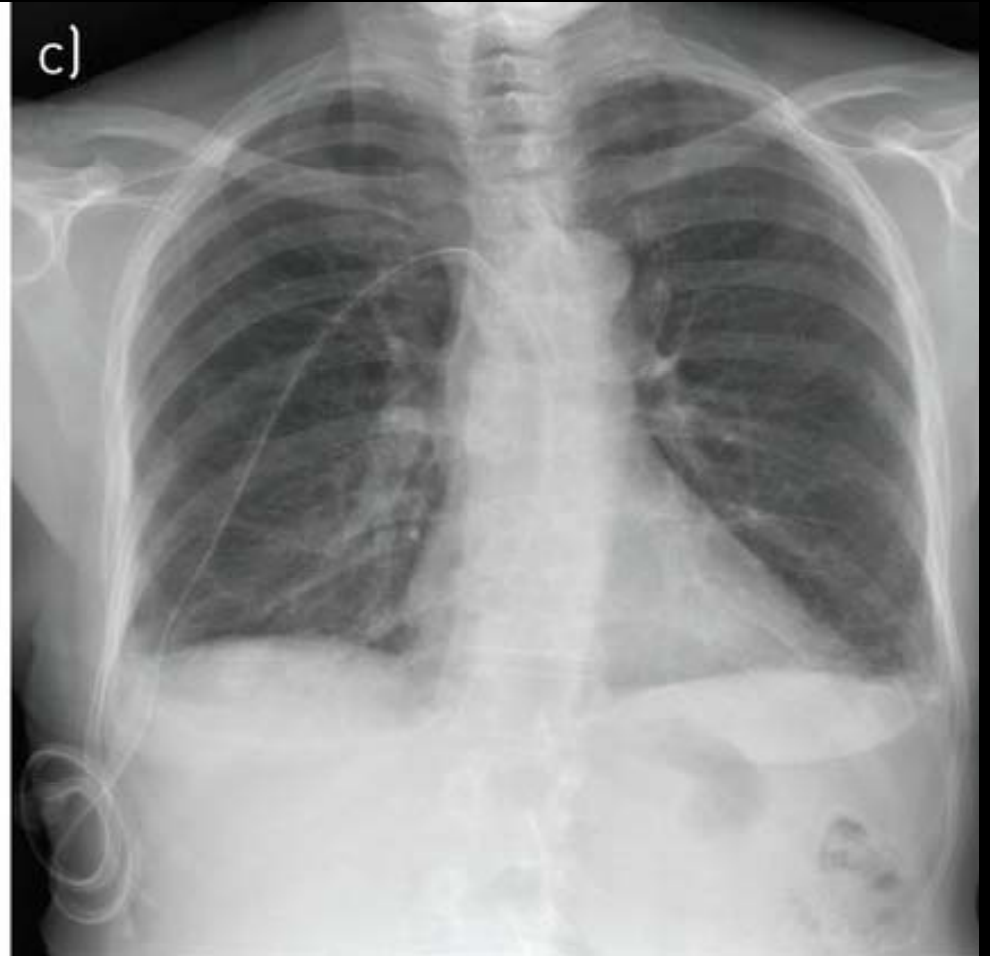
Which best describes the positioning of the left chest tube?

- A. Appropriately positioned; no intervention needed
- B. Intra-parenchymal; no intervention needed
- C. Intra-parenchymal; prompt removal indicated
- D. Intra-fissural; prompt removal indicated

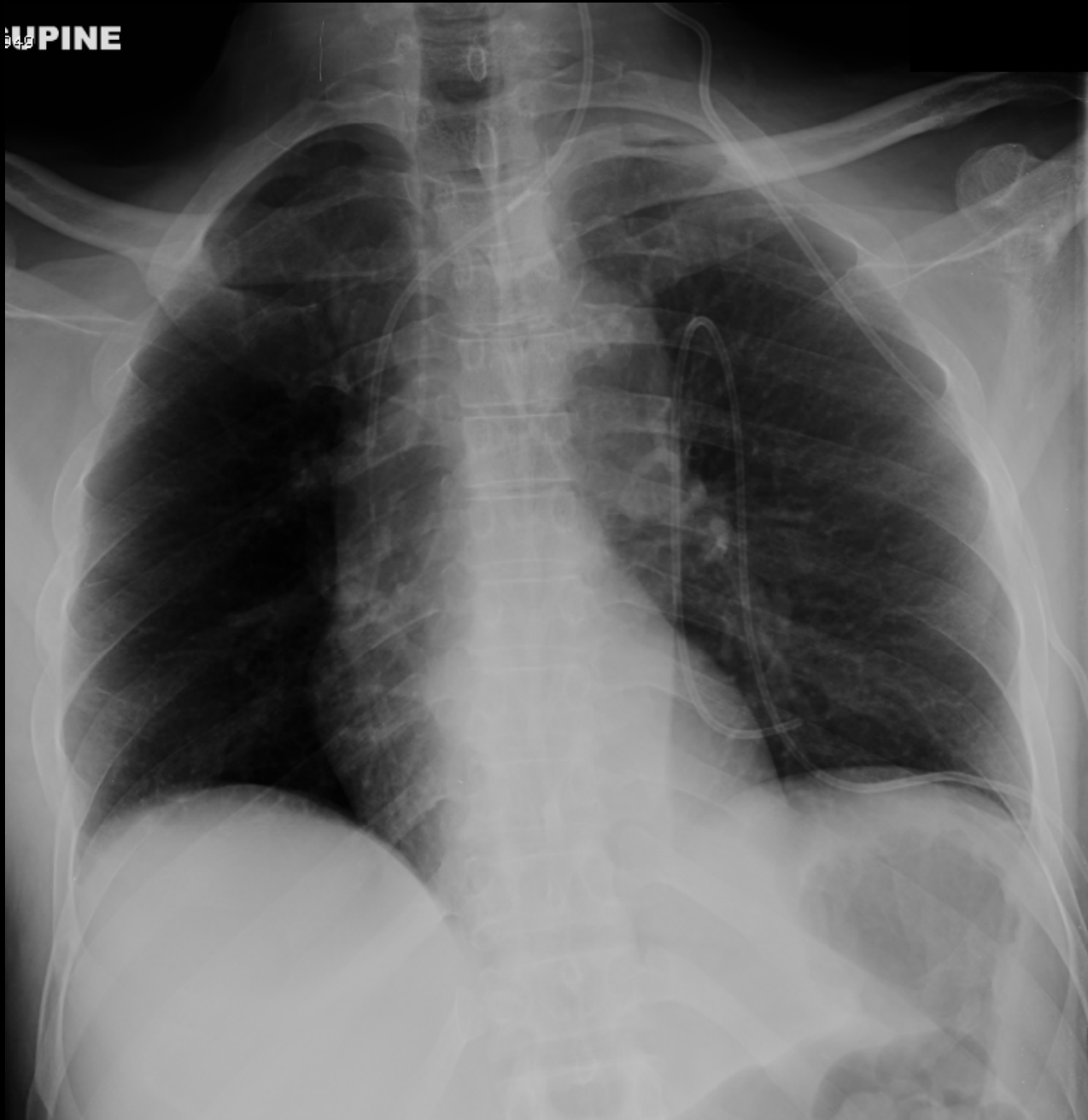


5/1/01  
L  
MOBILE

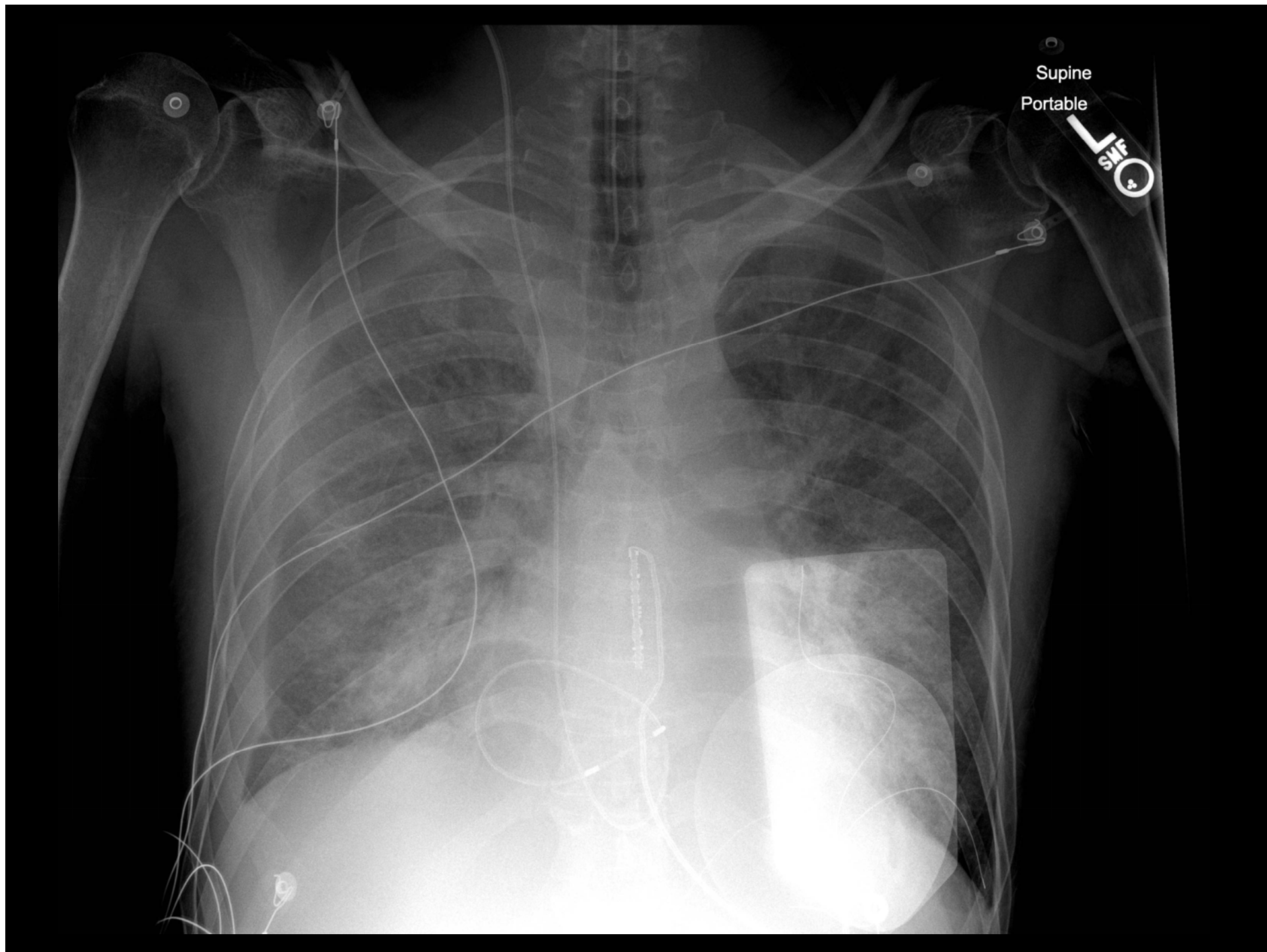


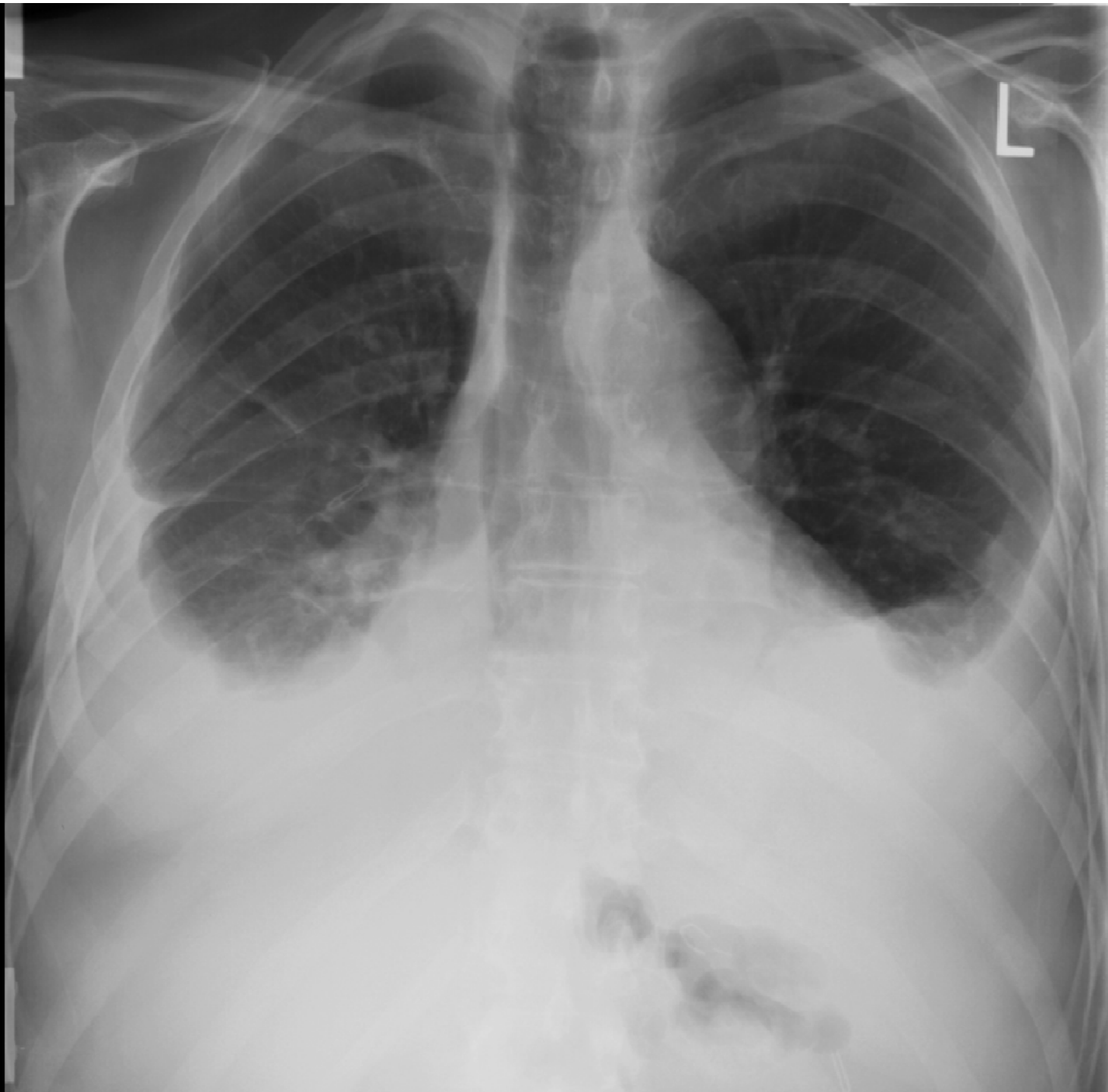


UPINE







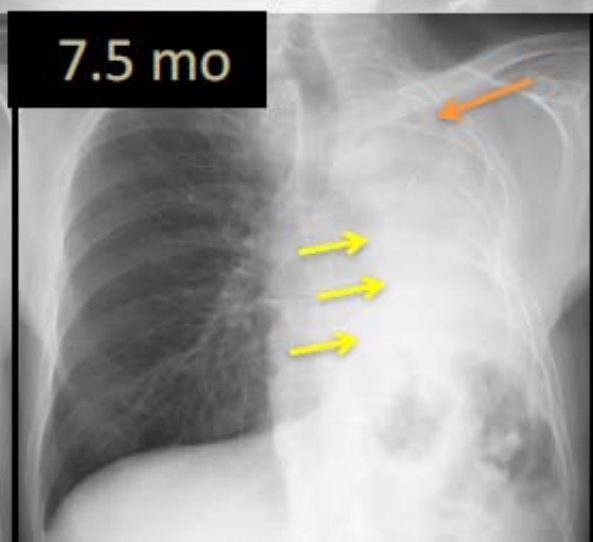
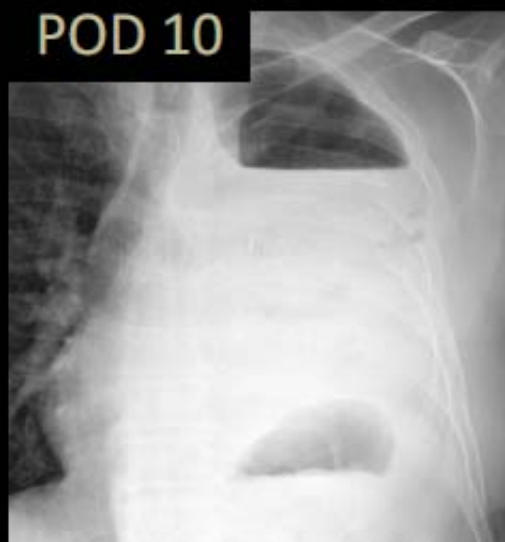






## Pneumonectomy

- Opacifies 7-14 days typically, occ 6 mo





# Cardiac Devices



# Types of Prosthetic Heart Valves

- Mechanical

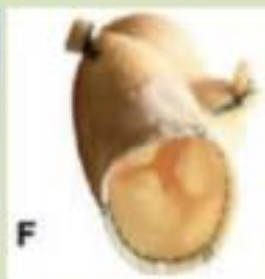
- Bileaflet (St Jude)(A)
- Single tilting disc (Medtronic Hall)(B)
- Caged-ball (Starr-Edwards) (C)



**CF »»»»» Leaflet imaging depends on radio-opacity**

- Biologic

- Stented
  - Porcine xenograft (Medtronic Mosaic) (D)
  - Pericardial xenograft (Carpentier-Edwards Magna) (E)
- Stentless
  - Porcine xenograft (Medtronic Freestyle) (F)
  - Pericardial xenograft
  - Homograft (allograft)
- Percutaneous
  - Expanded over a balloon (Edwards Sapien) (G)
  - Self-expandable (CoreValve) (H)



*Circulation 2009, 119:1034-1048*

