



# ICU Radiology

## The Good, The Bad, The Ugly

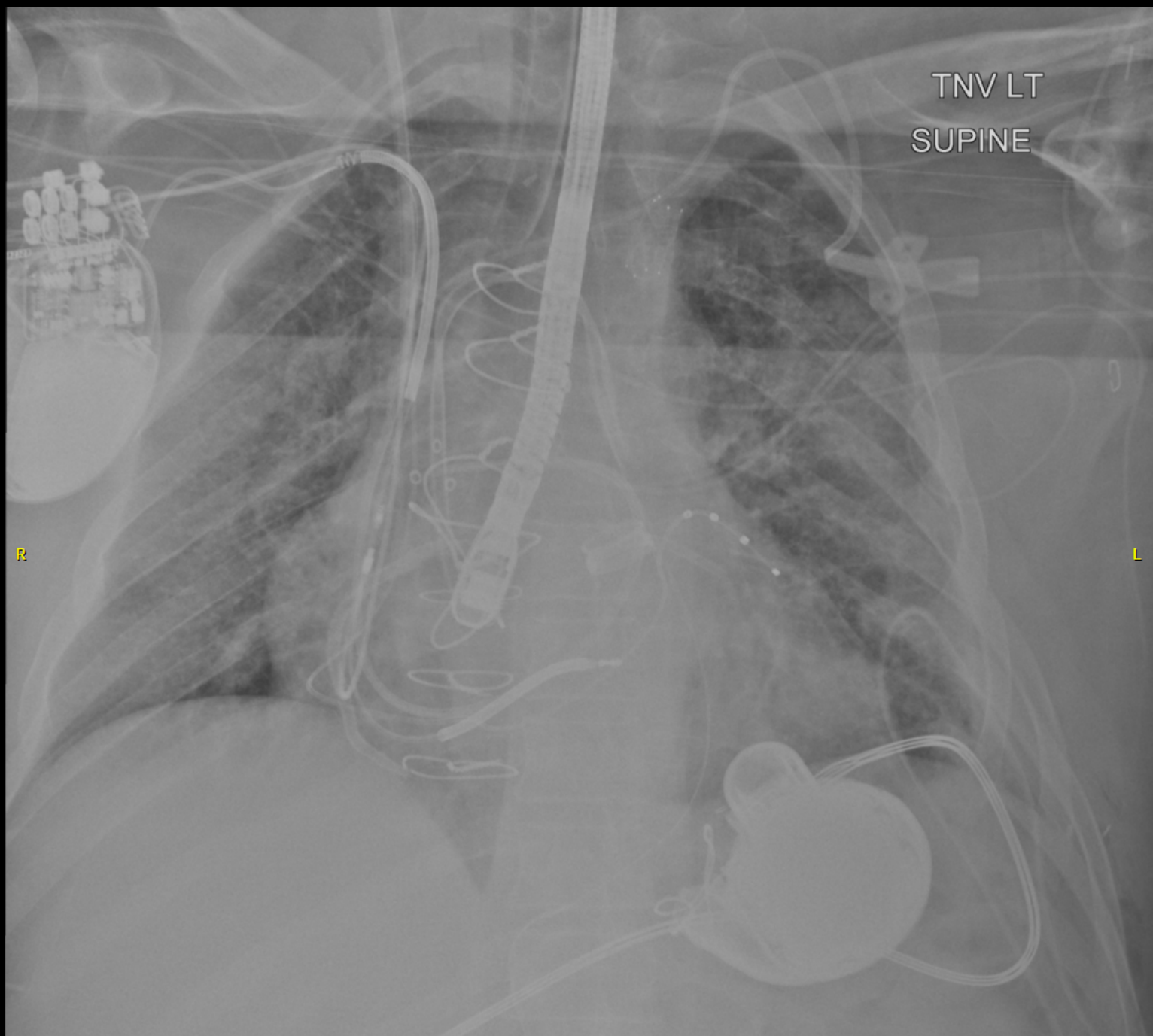
Rolf A Grage, M.D.

Department of Radiology

Mayo Clinic, Jacksonville, FL



# No Financial Disclosures



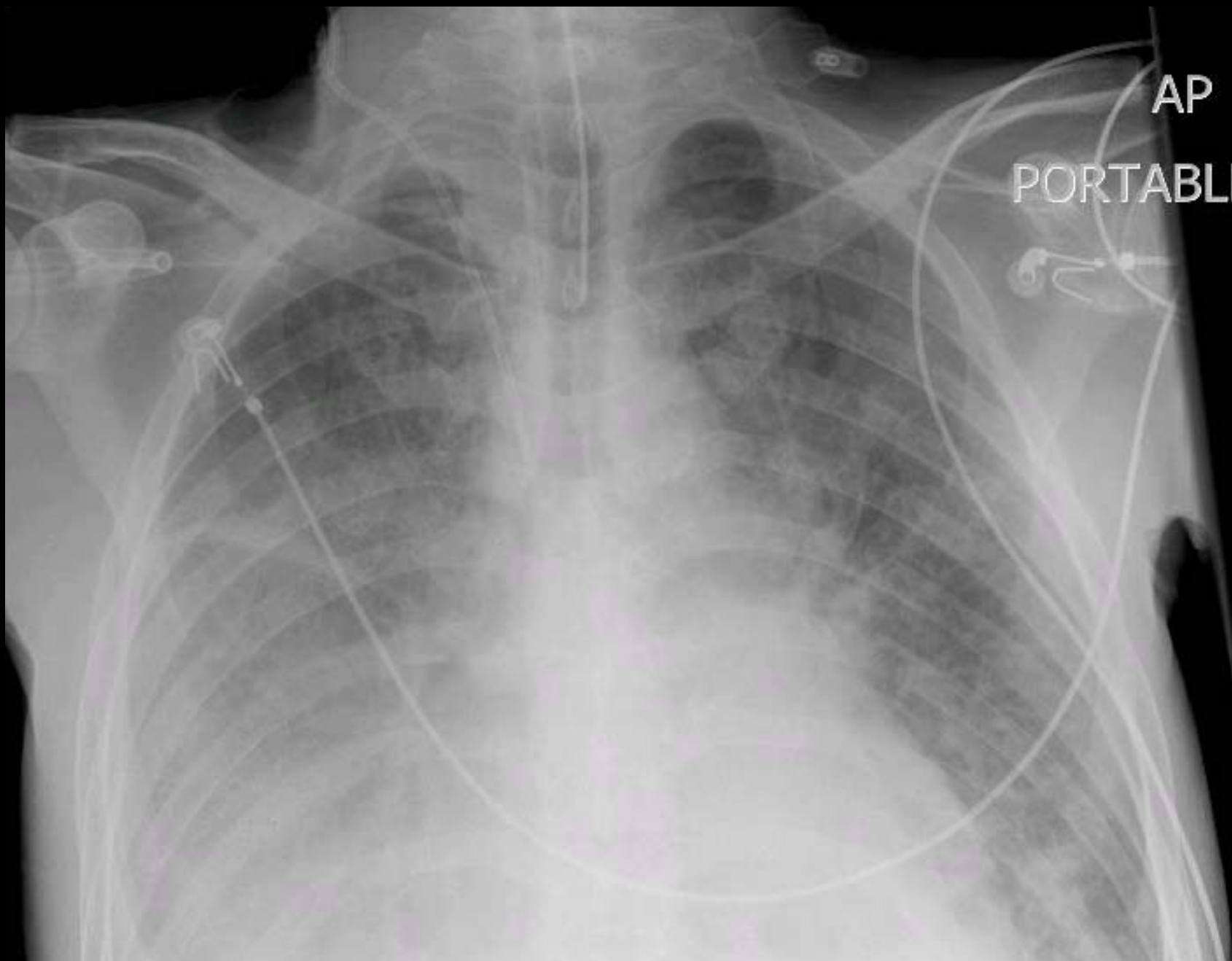
# Which of the following statements is true?

- A. ICU chest films are usually taken in the Posteroanterior (PA) view
- B. Most ICU chest films demonstrate significant findings
- C. ICU chest films are both sensitive and specific
- D. The target to film distance is unimportant

Daily portable x-rays are appropriate for which patient?

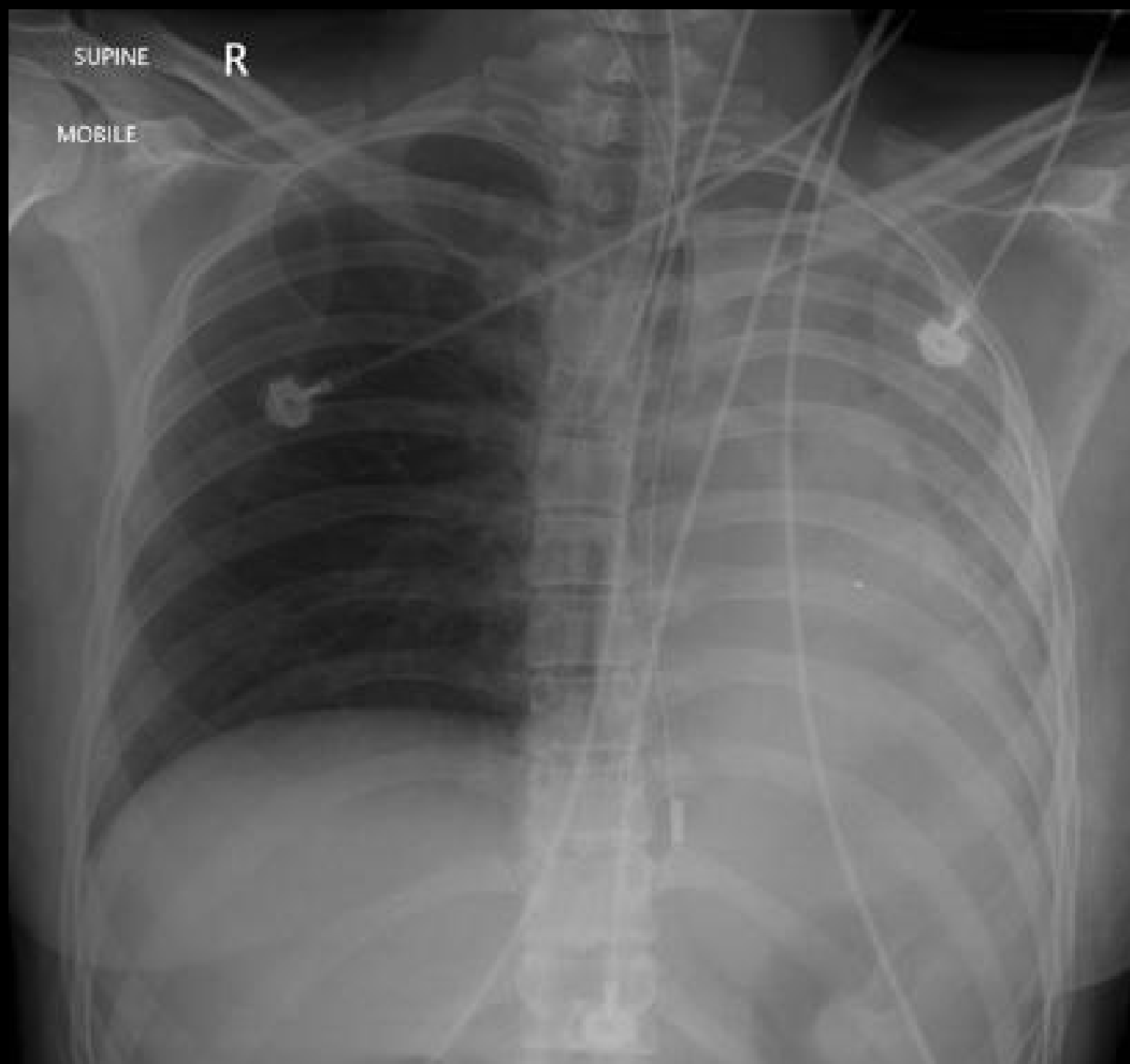
- A. 75 y/o with a central line
- B. Intubated 67 y/o suffering from COPD
- C. 24 y/o with two peripheral IV lines
- D. 89 y/o in the ICU for GI bleed

# Endotracheal Tube



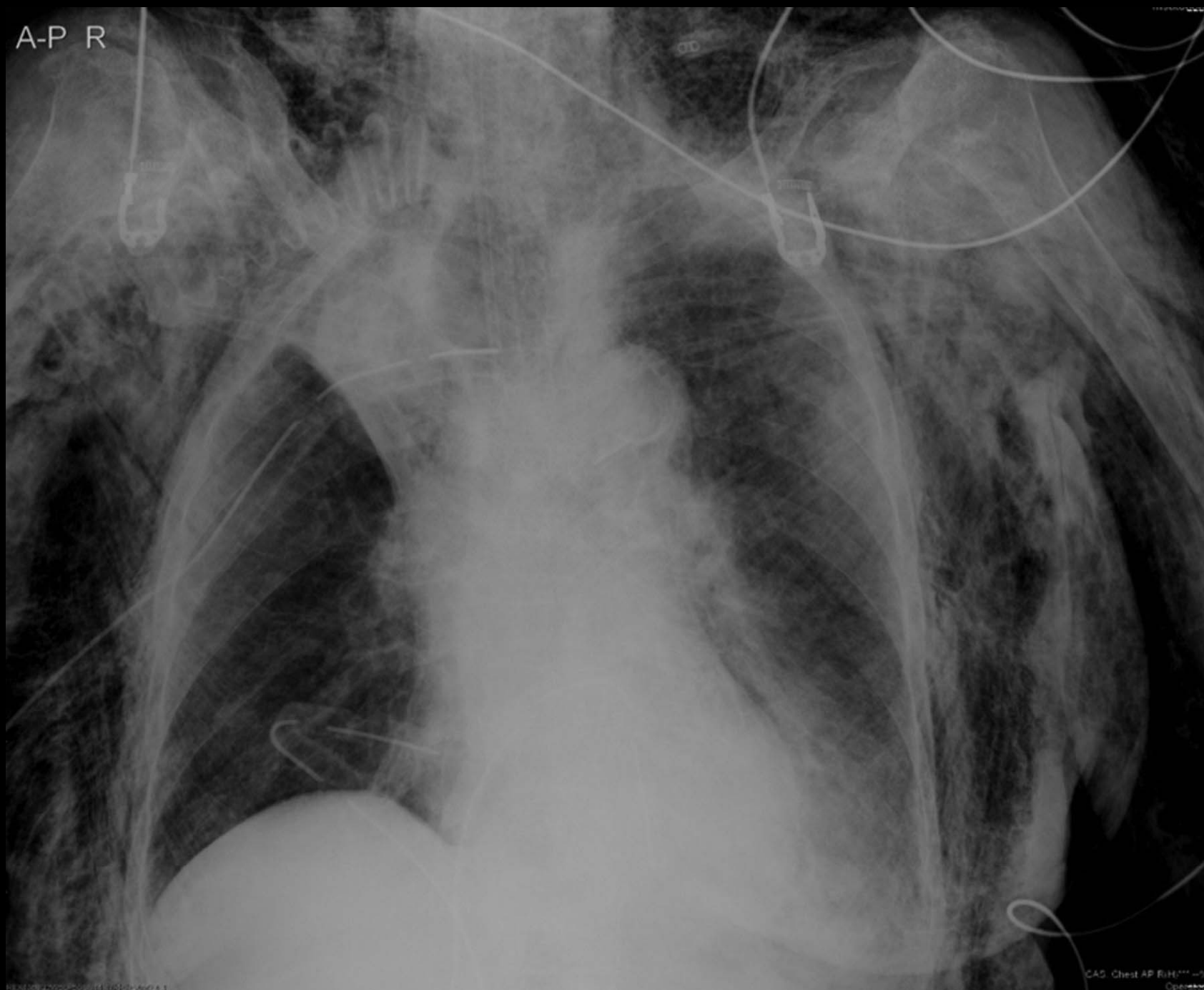
AP

PORTABLE





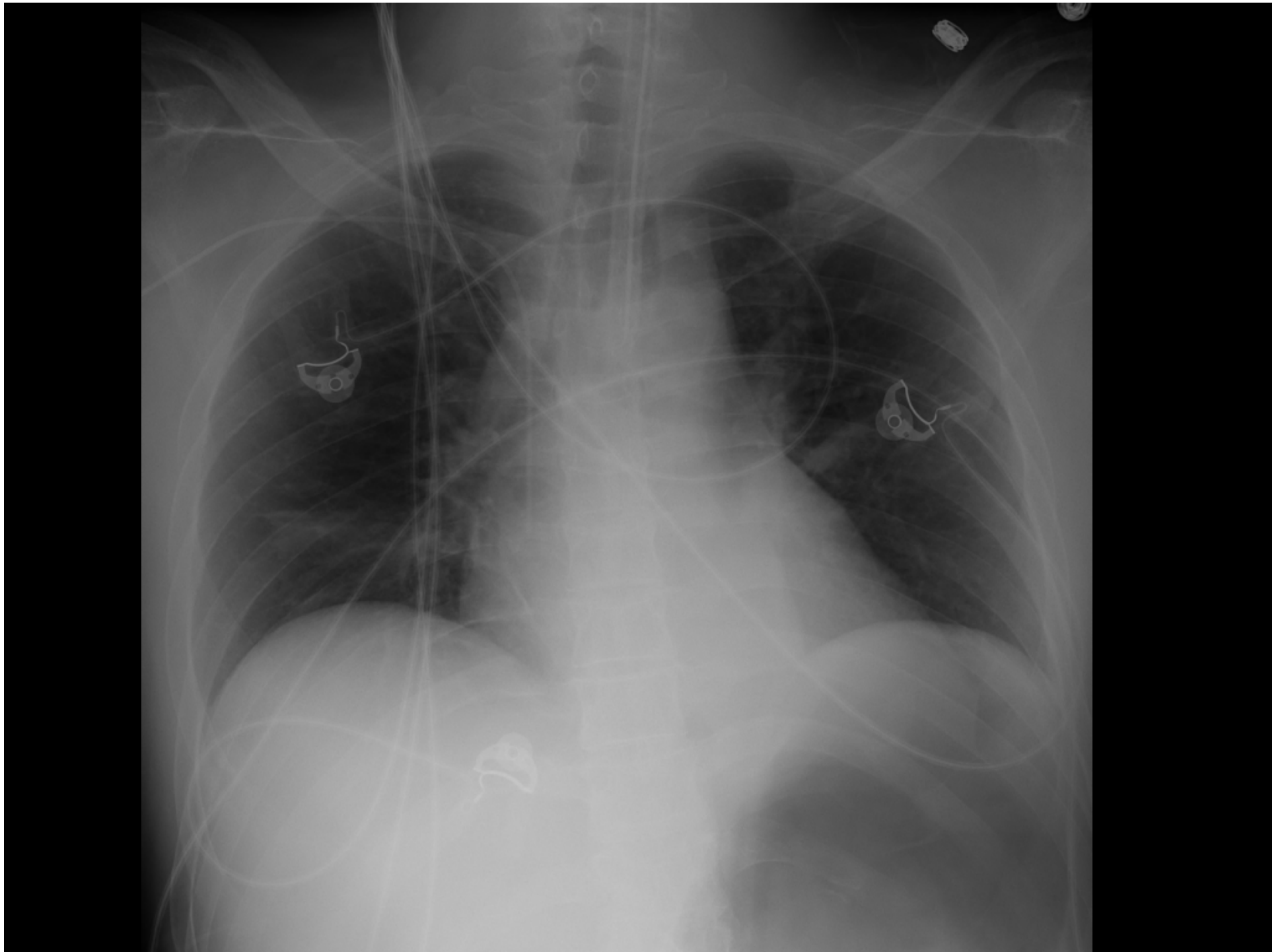
A-P R

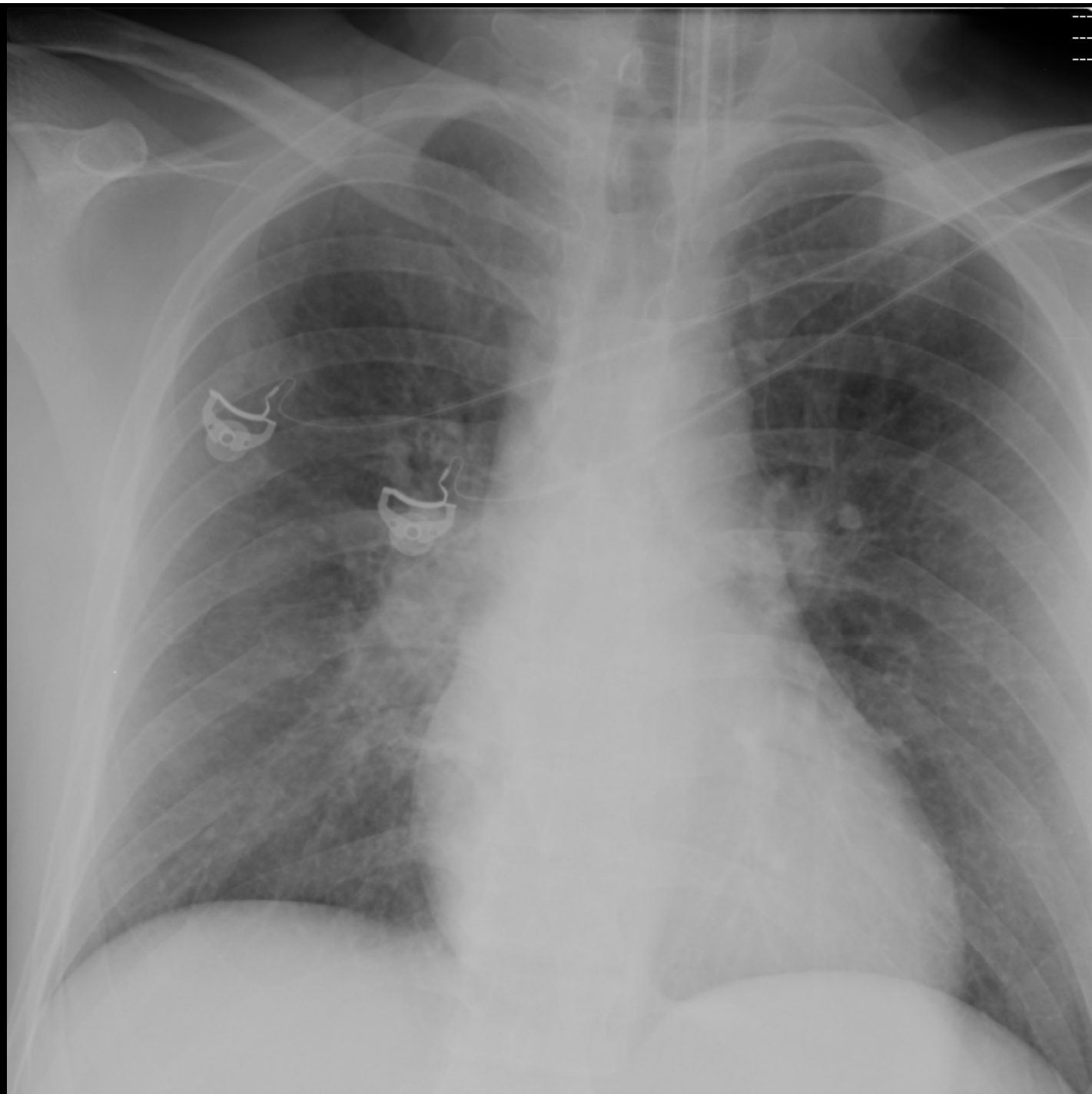


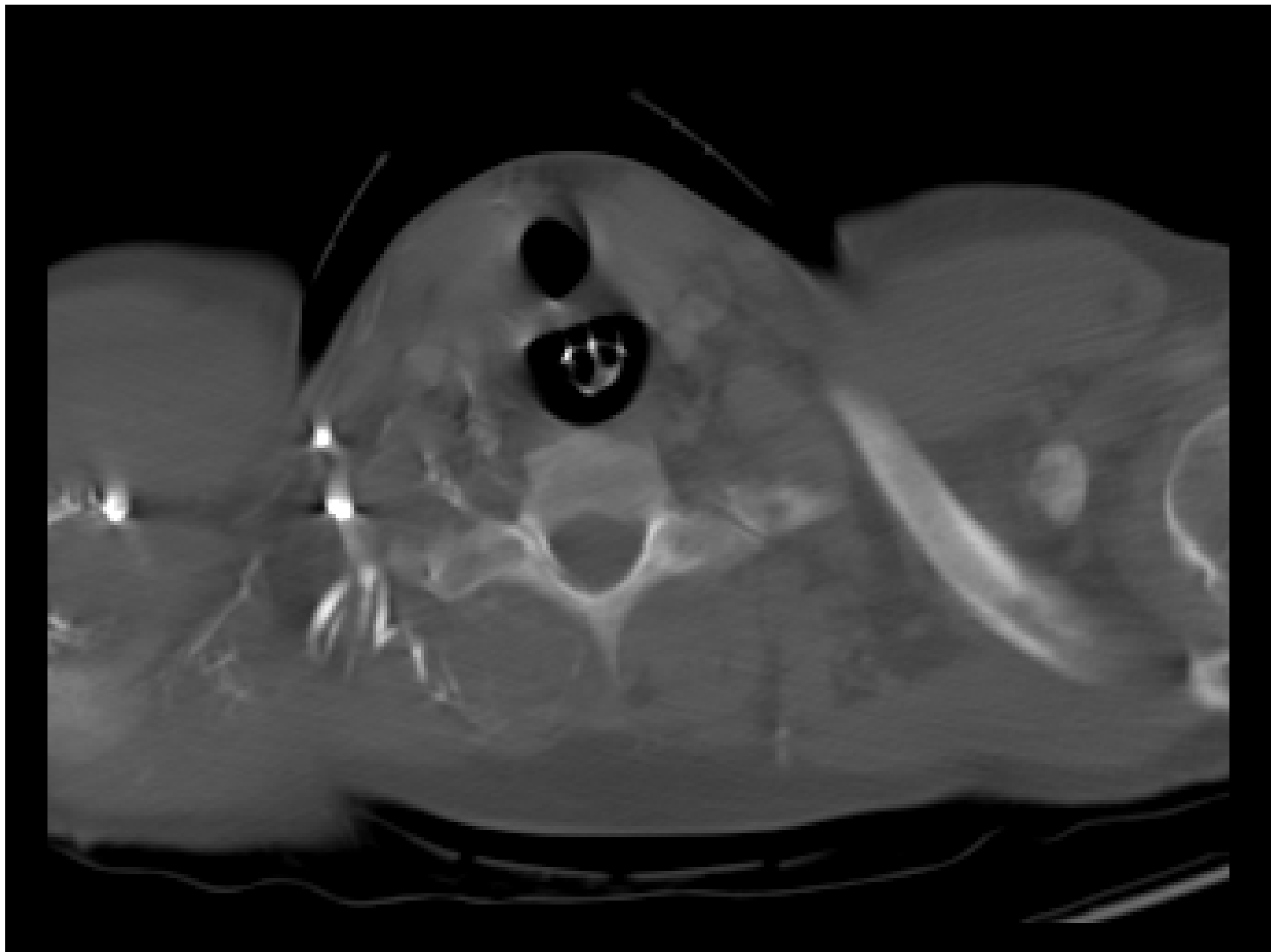
REMOVED 2005/05/01 11:00:00 AM

CAS Chest AP R/H/11/11/05  
Operator



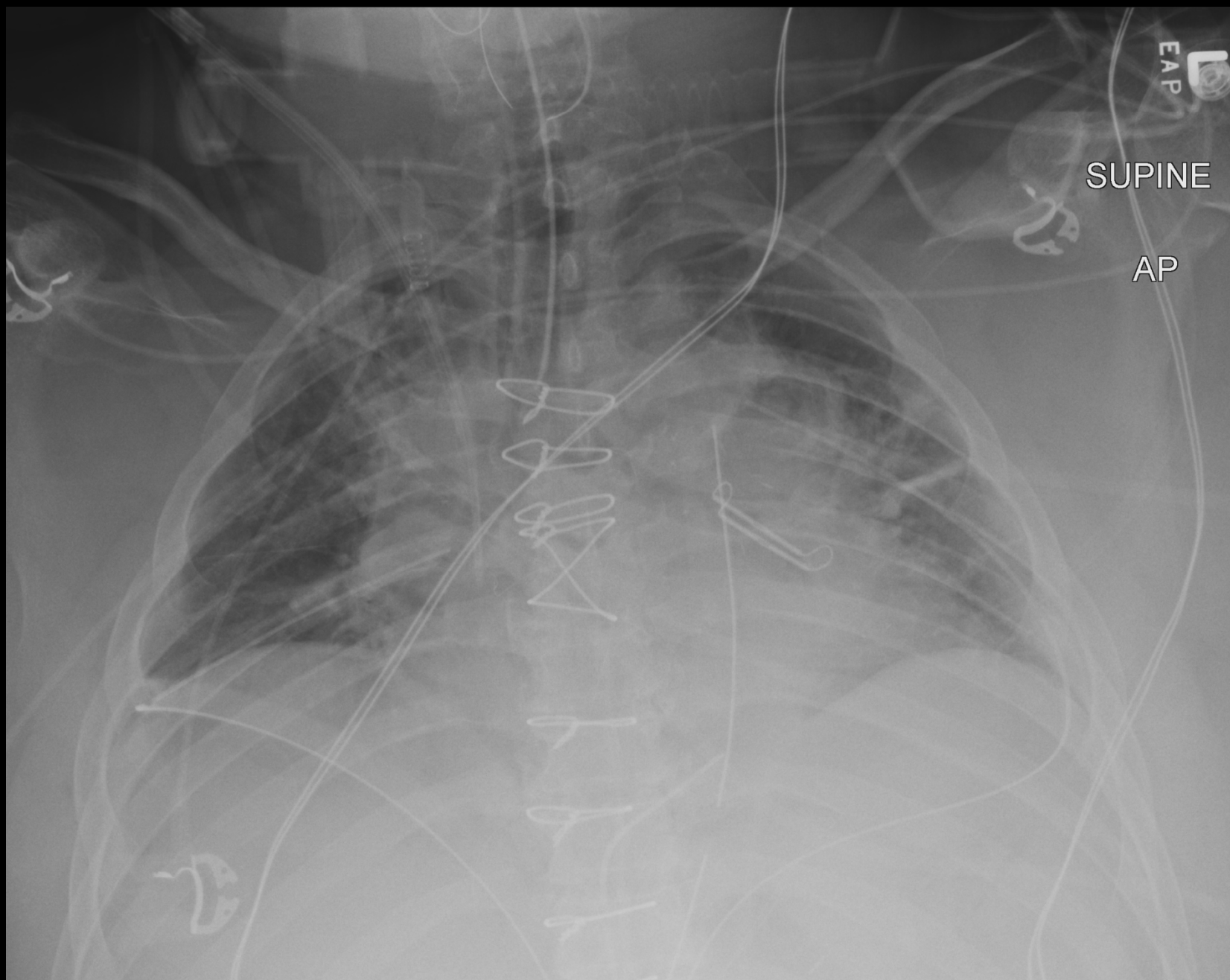


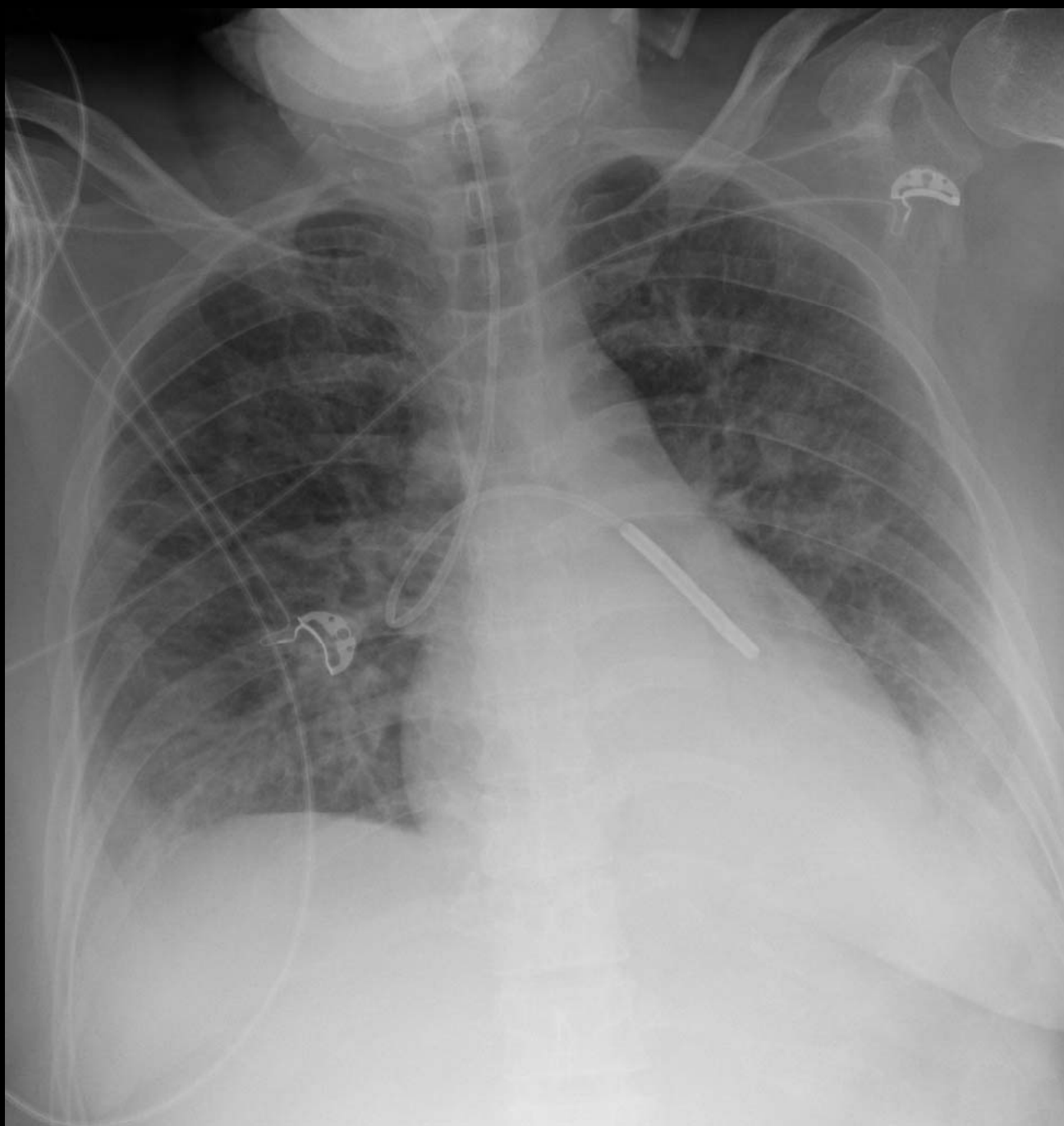




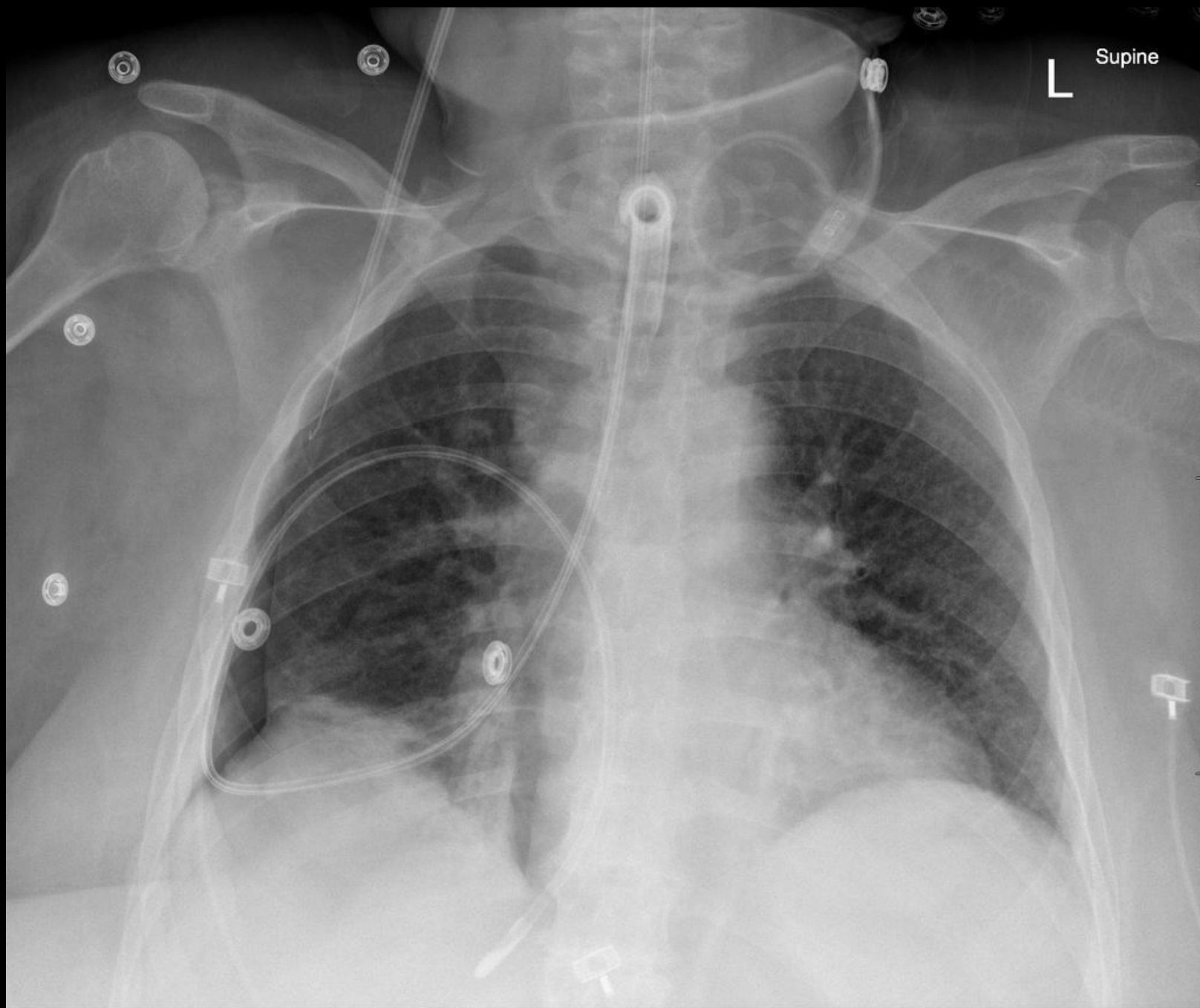


# Enteric Tube

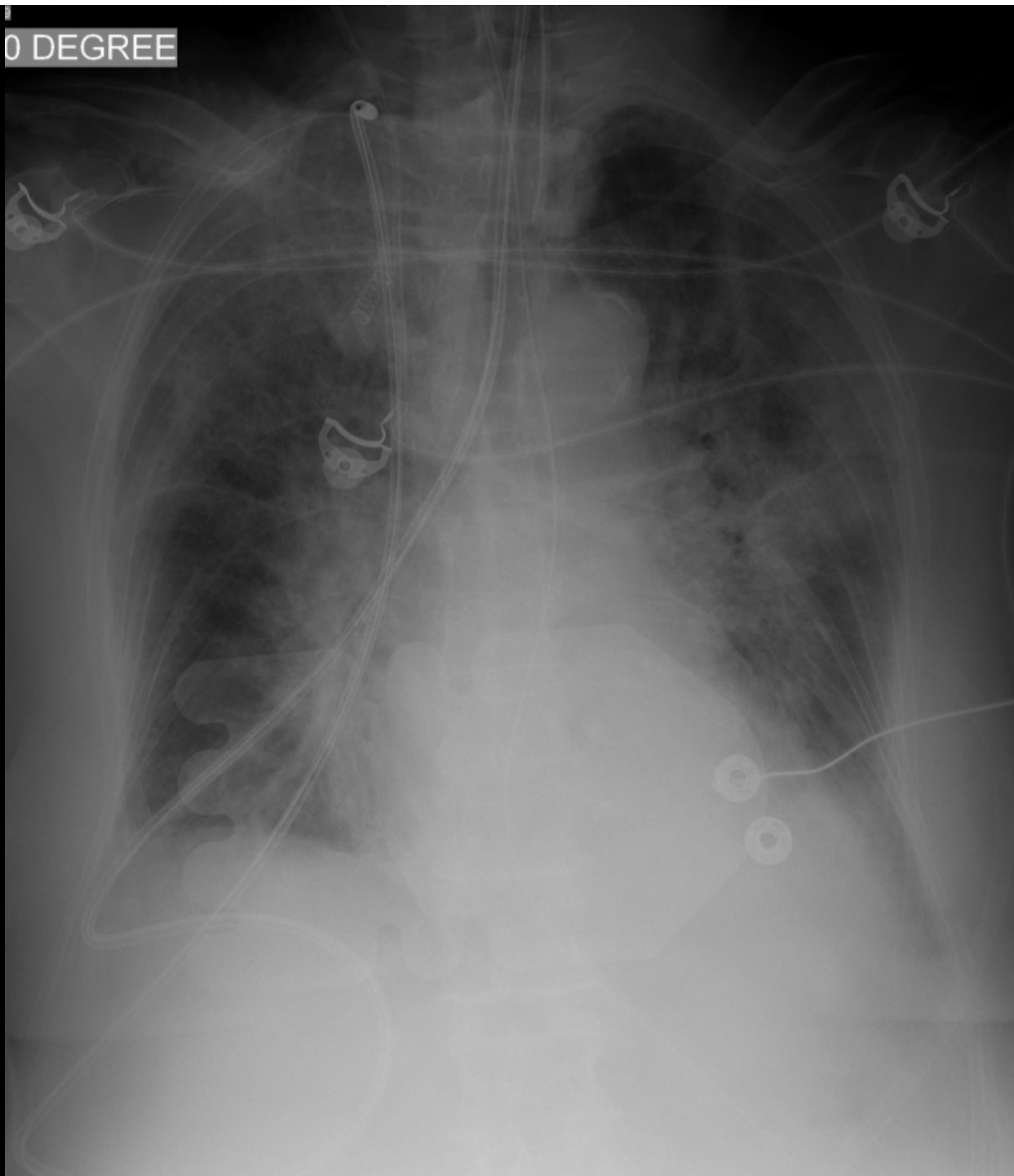


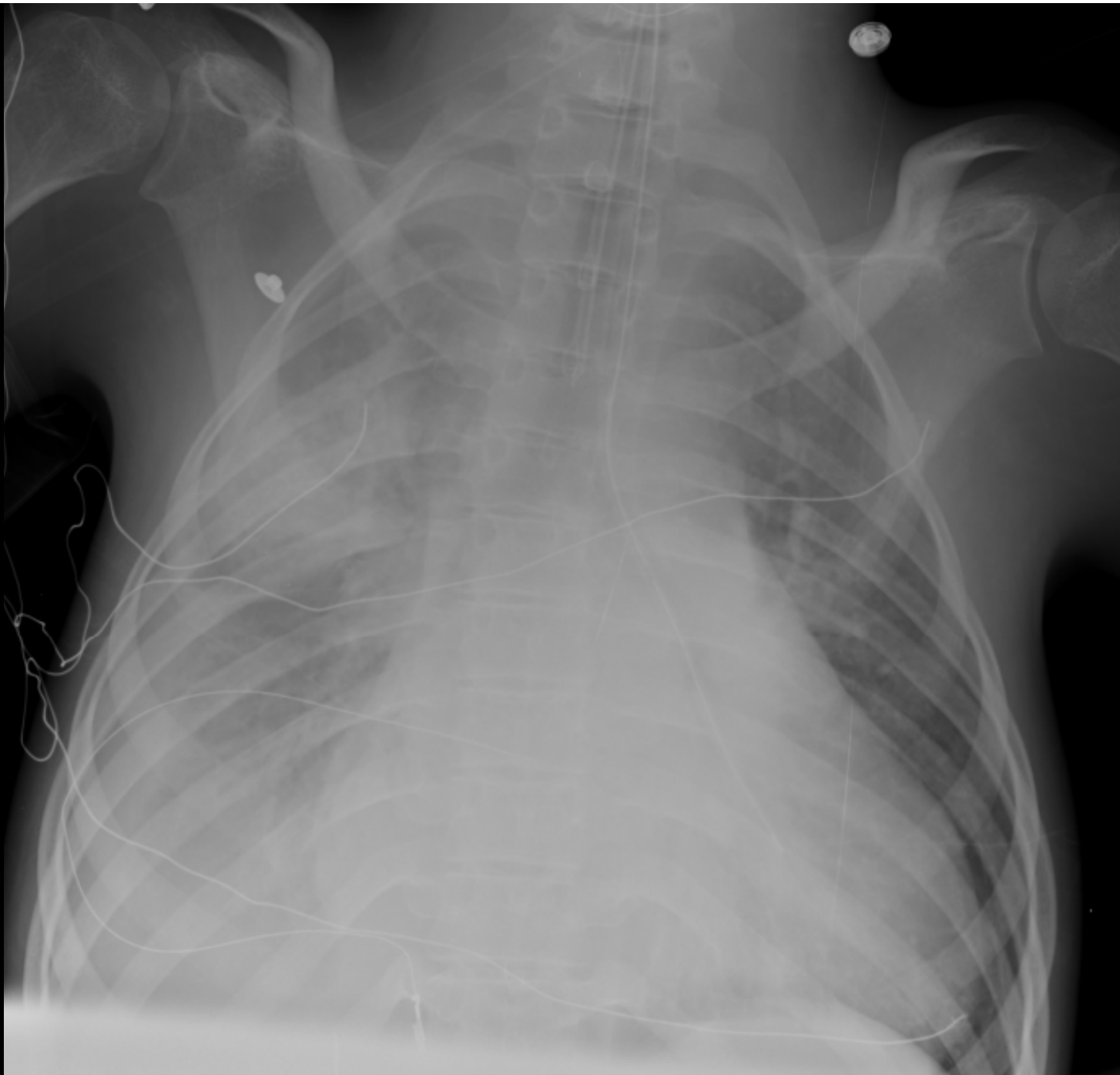






0 DEGREE

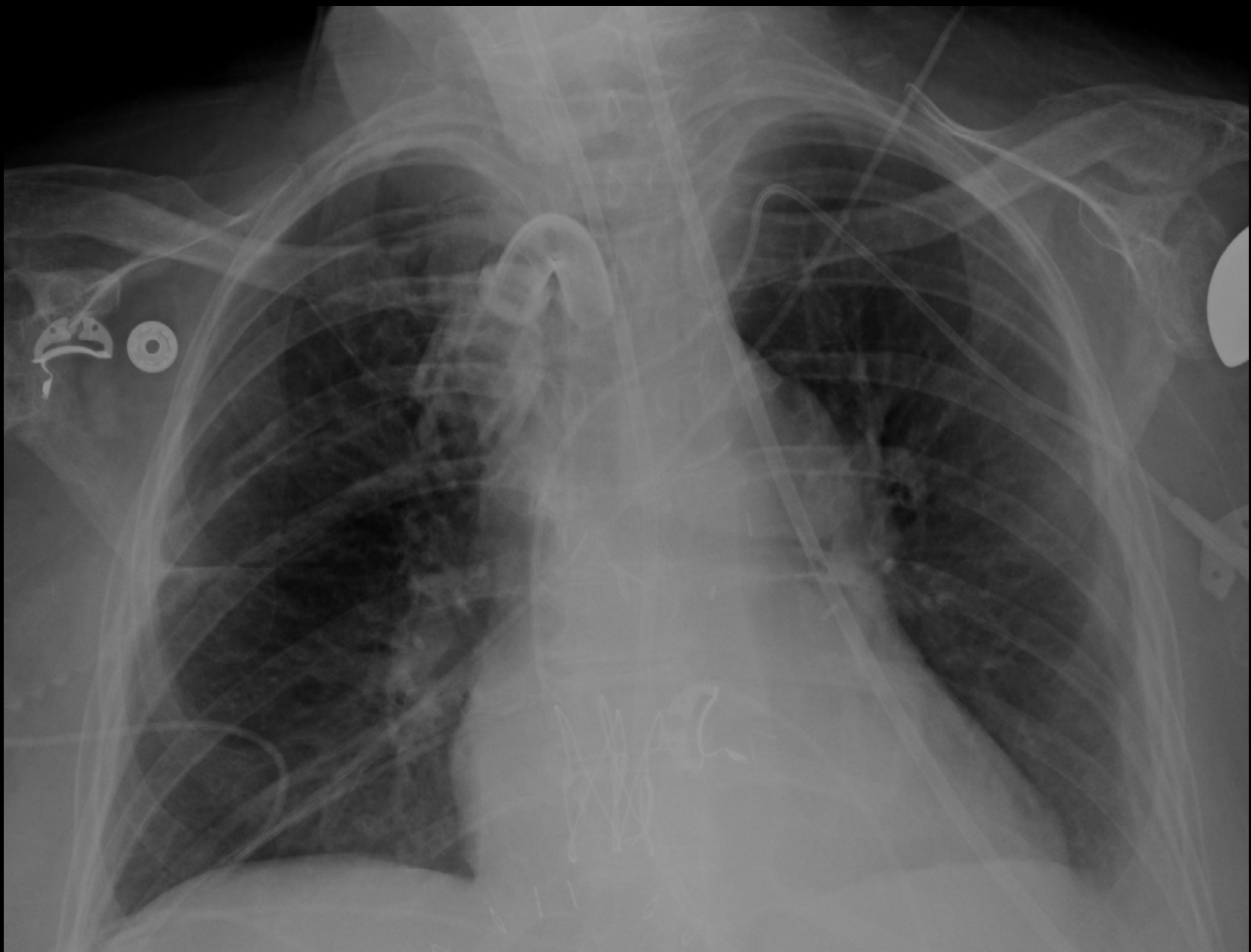


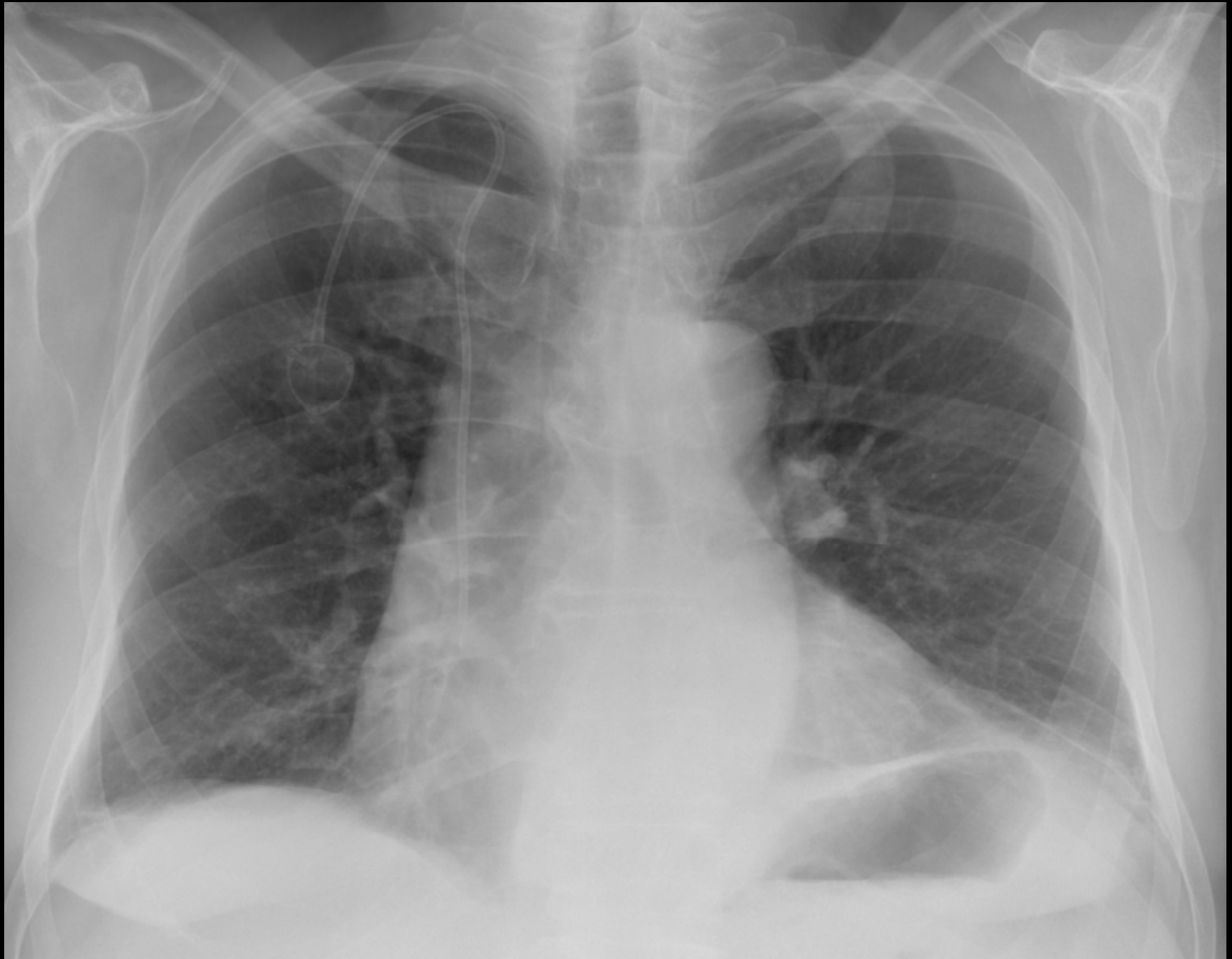




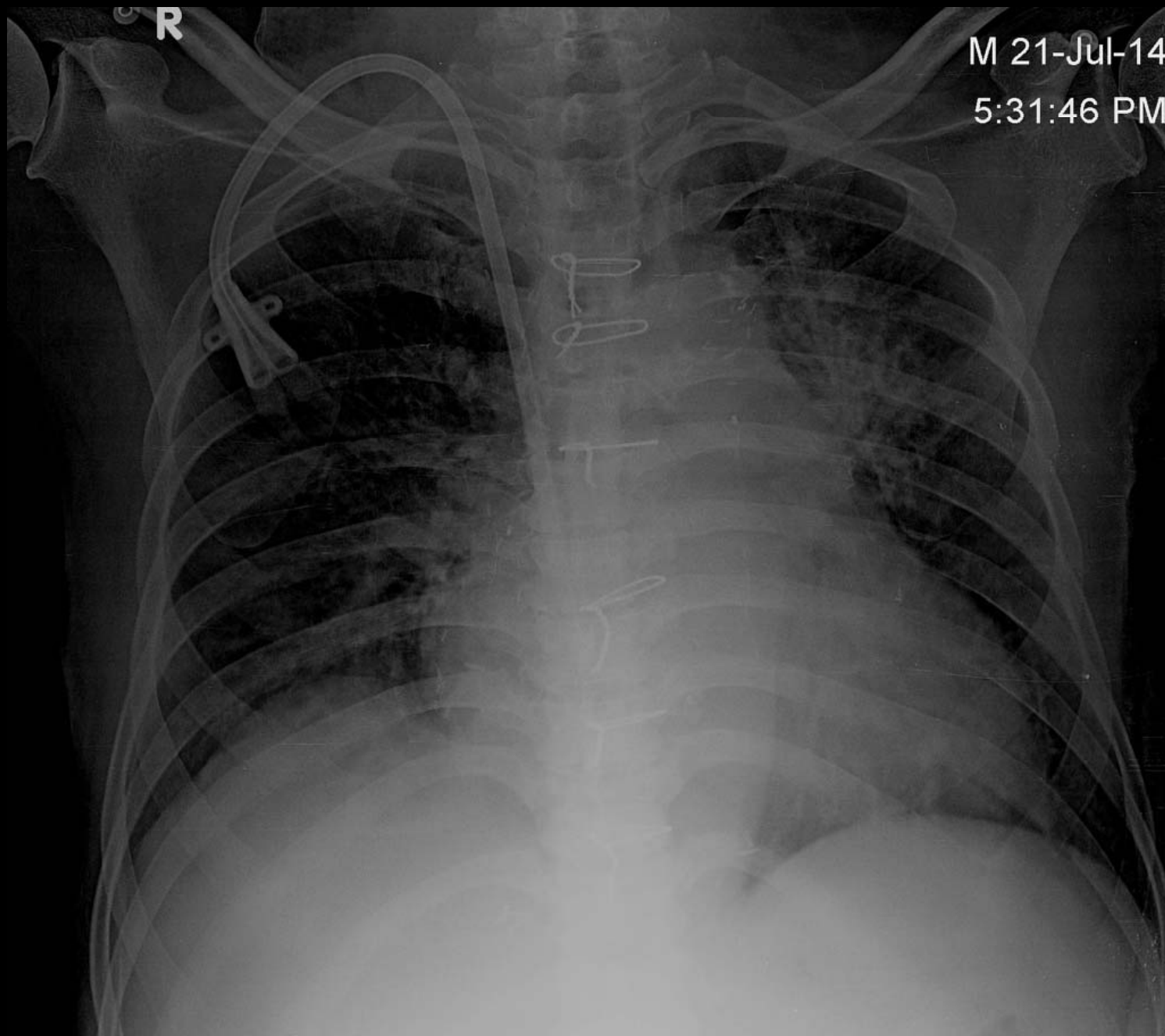


# Vascular Devices







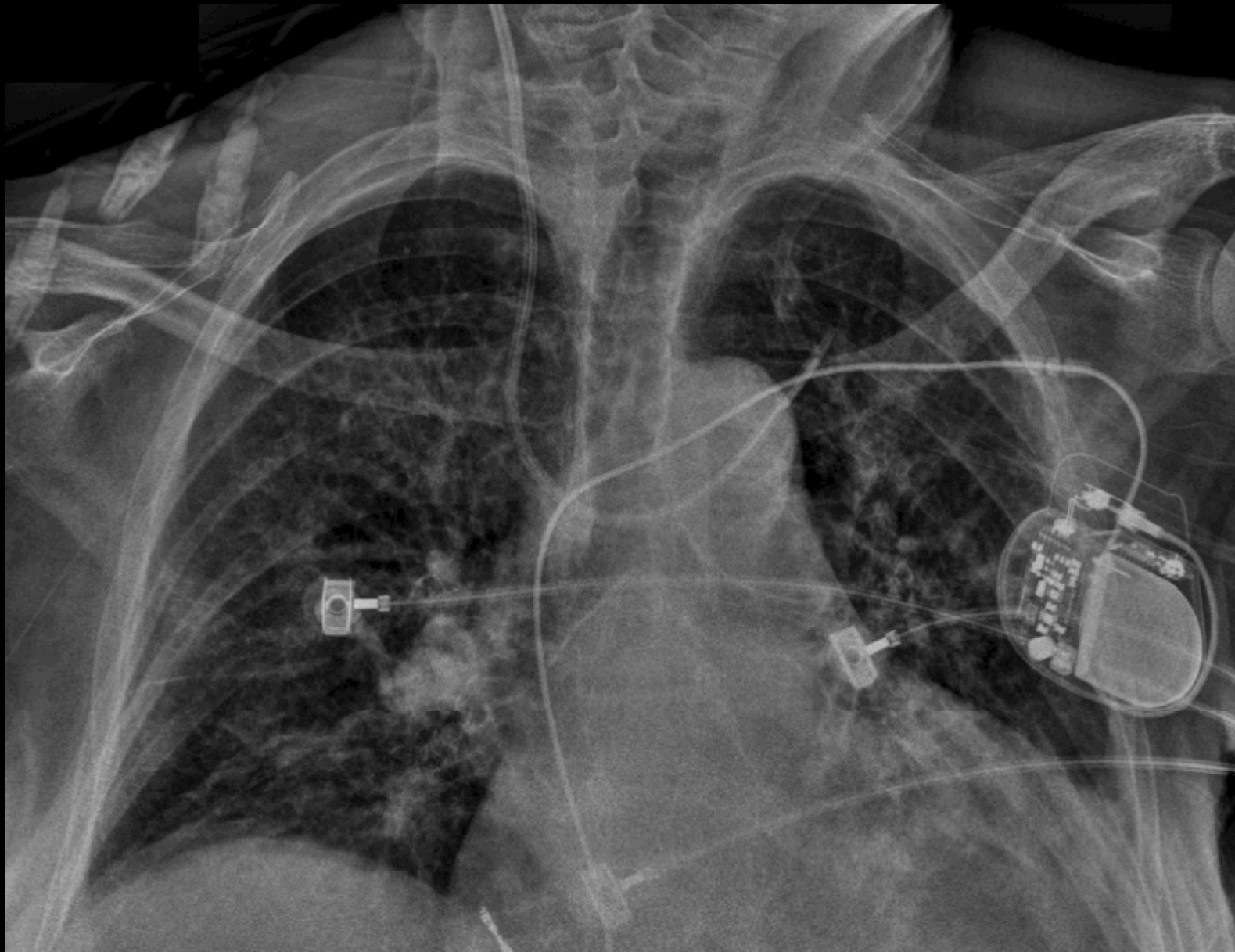


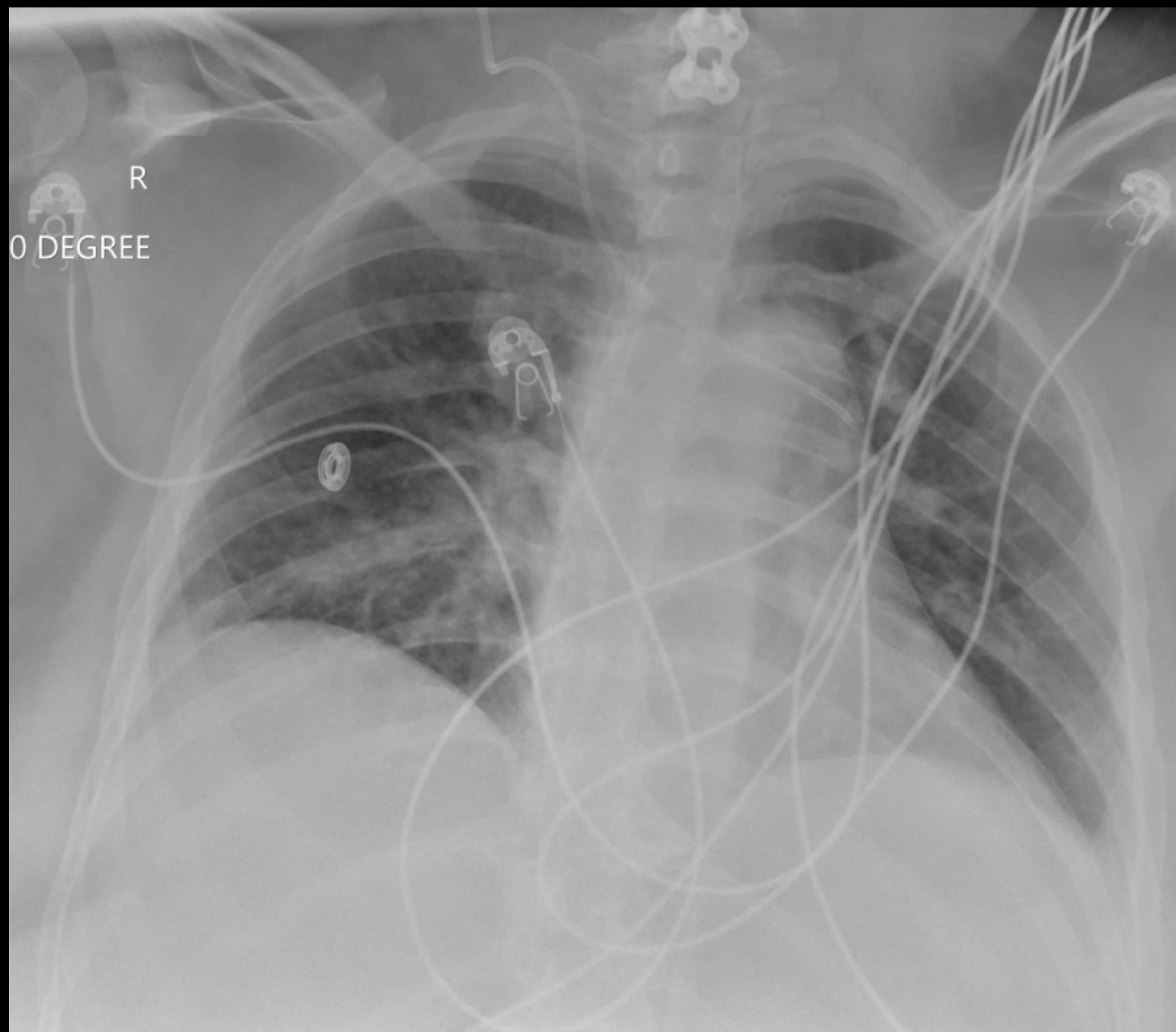
R

M 21-Jul-14

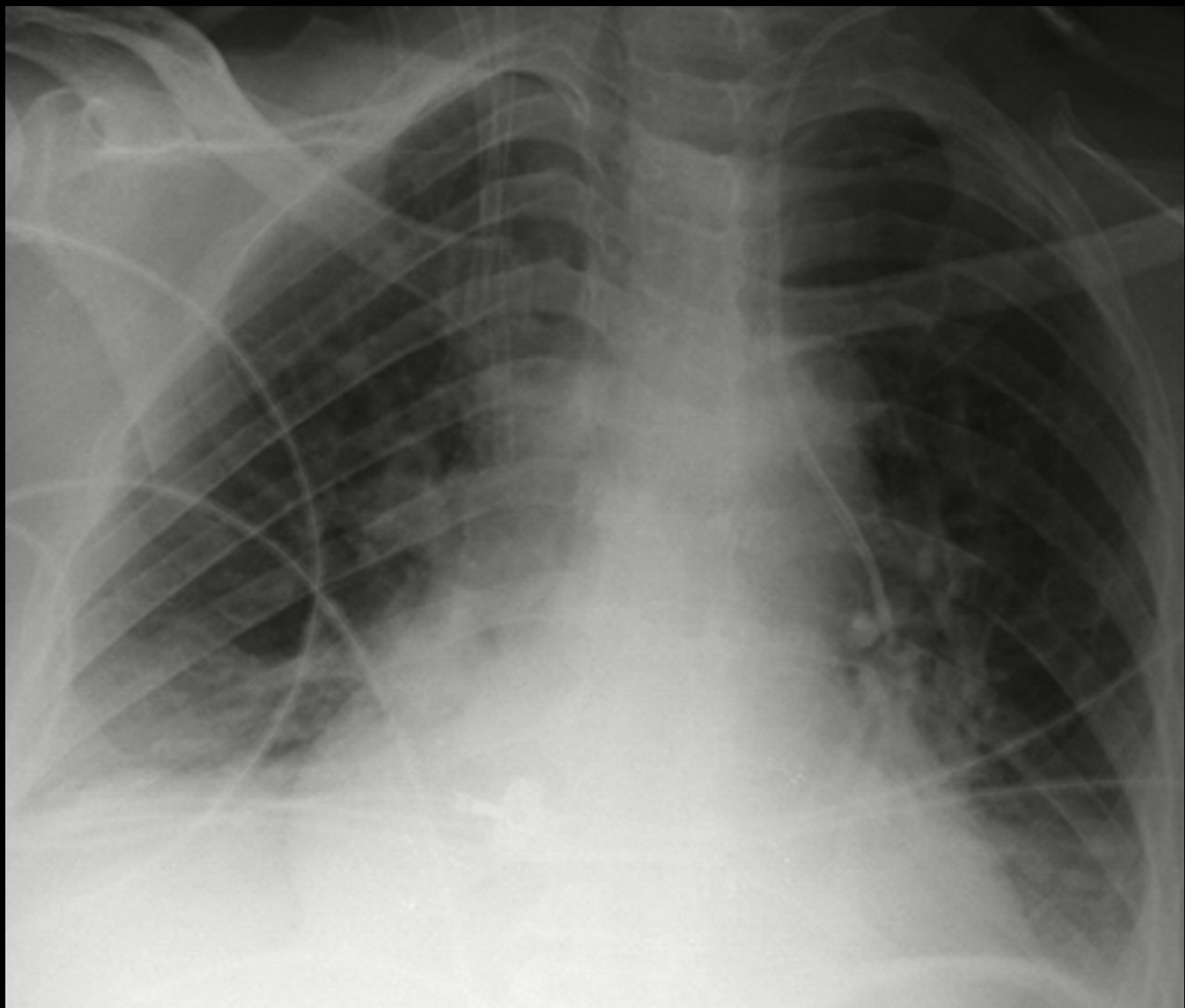
5:31:46 PM

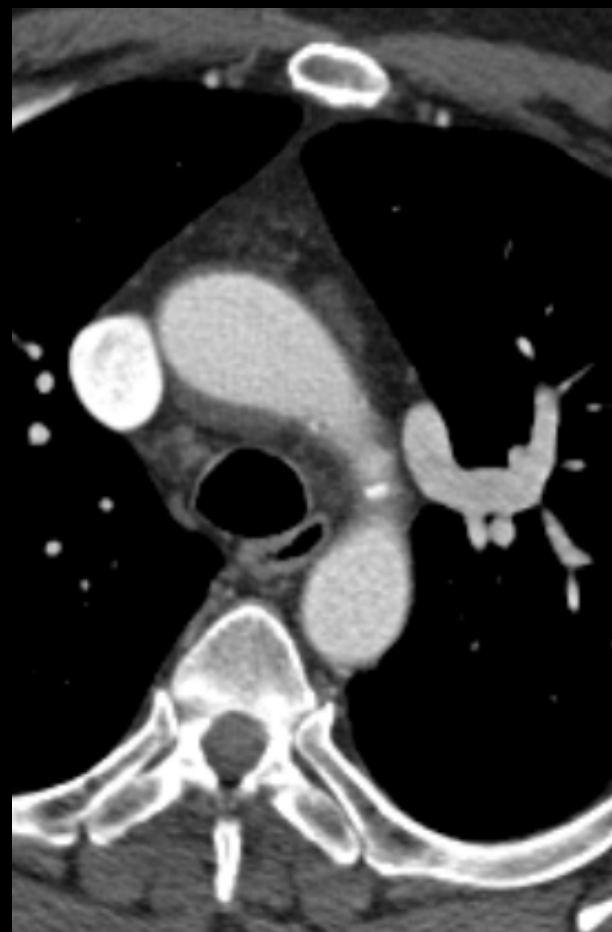
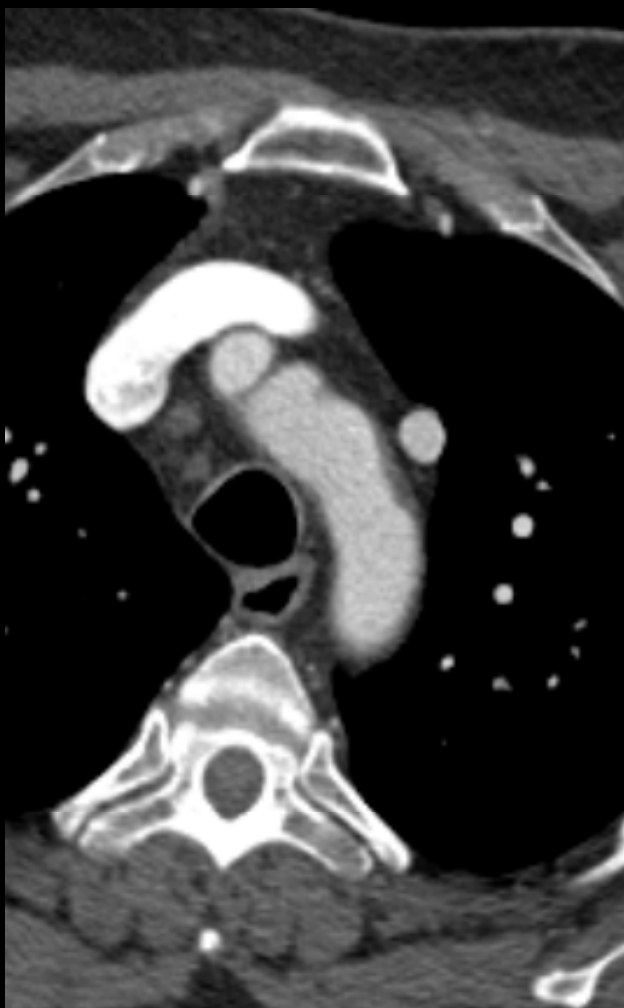
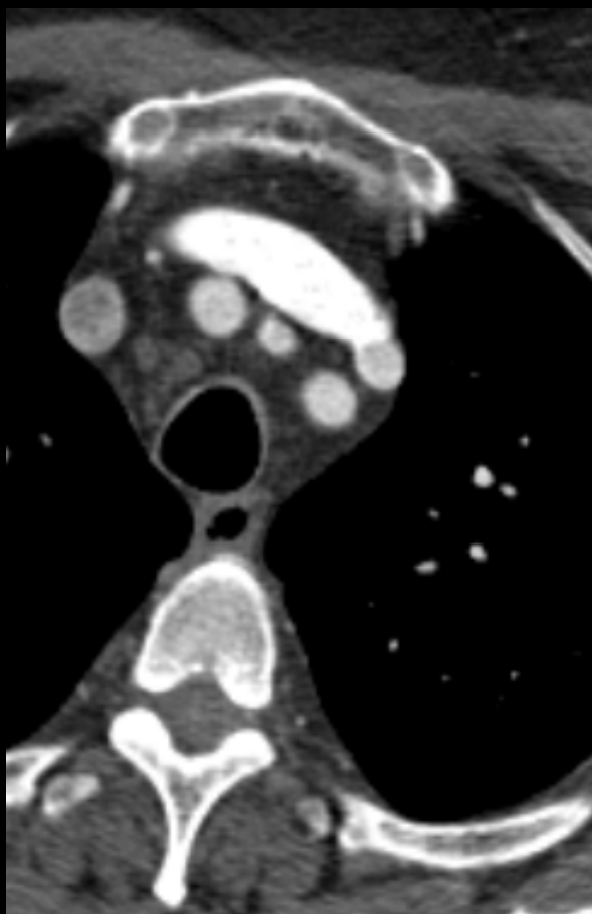






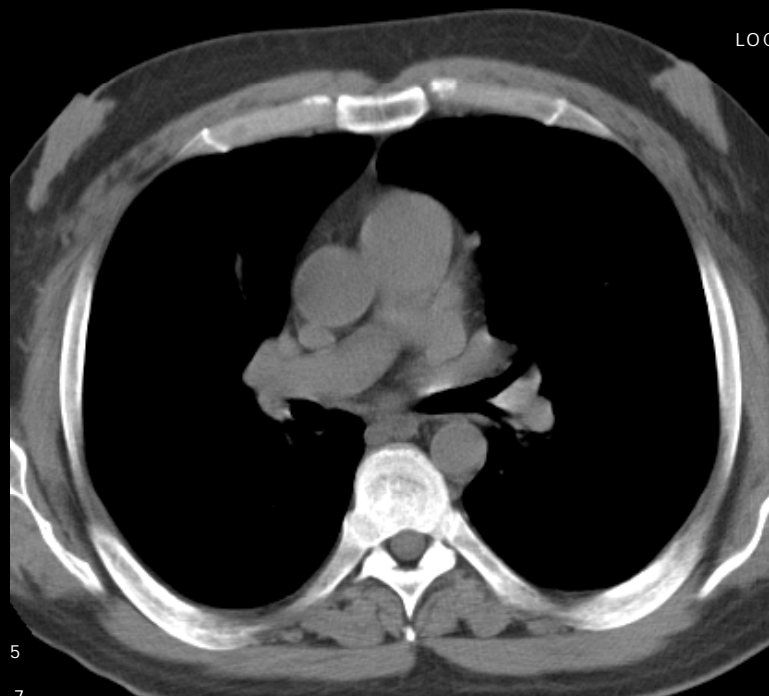
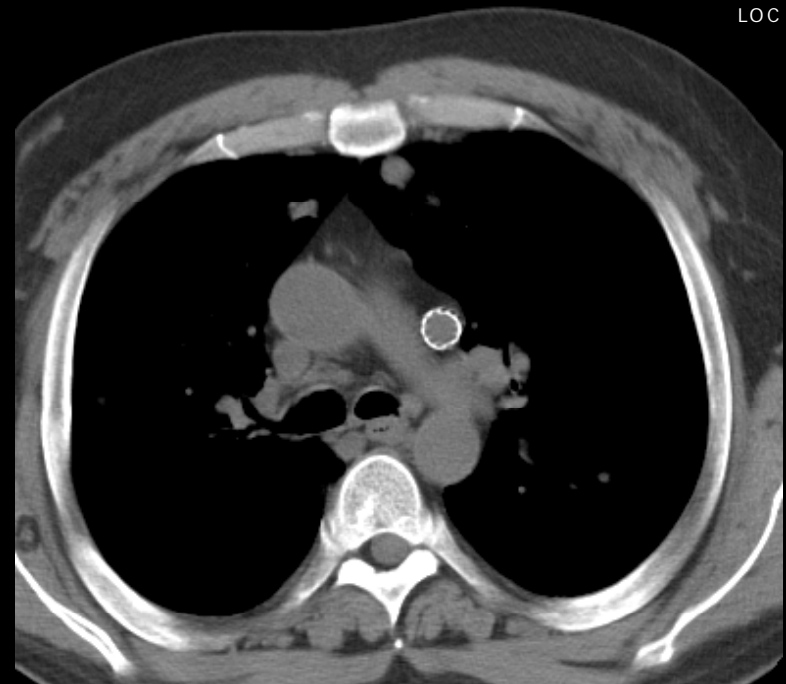








S:  
Z: 0  
C:  
W:  
IM: 1



5

7

