

THE CAFFEINATOR

Unsweetened Almond Milk, Espresso Beans,
Organic Coffee & Organic Chocolate
with 30g Vanilla Whey Protein

GOOD SOURCE OF
ANTIOXIDANTS

ALMOND
MILK

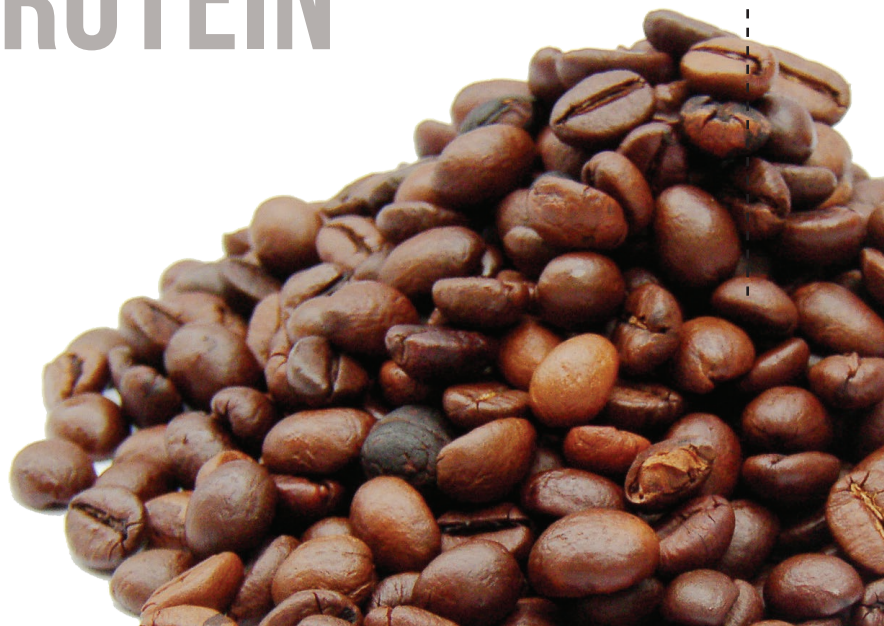
ESPRESSO BEANS

COFFEE

CHOCOLATE

PROTEIN

ENHANCES
MEMORY



“THE CAFFEINATOR”

6 OZ	UNSWEETENED VANILLA ALMOND MILK
1 TSP	ESPRESSO BEANS
½ SCP	FLAVOR FUSIONS - MOCHA LATTE
1½ SCPS	VANILLA WHEY PROTEIN
12 OZ	ICE

Nutrition Facts

servings per container

Serving size 20 fl. oz. (591 ml)
(386g)

Amount per serving

Calories **280**

% Daily Value*

Total Fat 5g **6%**

Saturated Fat 1.5g **8%**

Trans Fat 0g

Cholesterol 85mg **28%**

Sodium 340mg **15%**

Total Carbohydrate 25g **9%**

Dietary Fiber 1g **4%**

Total Sugars 17g

Includes 16g Added Sugars **32%**

Protein 32g

Vitamin D 2mcg 10%

Calcium 372mg 30%

Iron 1mg 6%

Potassium 439mg 10%

*The % Daily Value tells you how much a nutrient in a serving of food contributes to a daily diet. 2,000 calories a day is used for general nutrition advice.