



**FOR LEASE**

**12,675 SF**

**savills**

**AVAILABLE IMMEDIATELY**

**5665 PARÉ STREET, MOUNT-ROYAL, QC H4P 1S1**

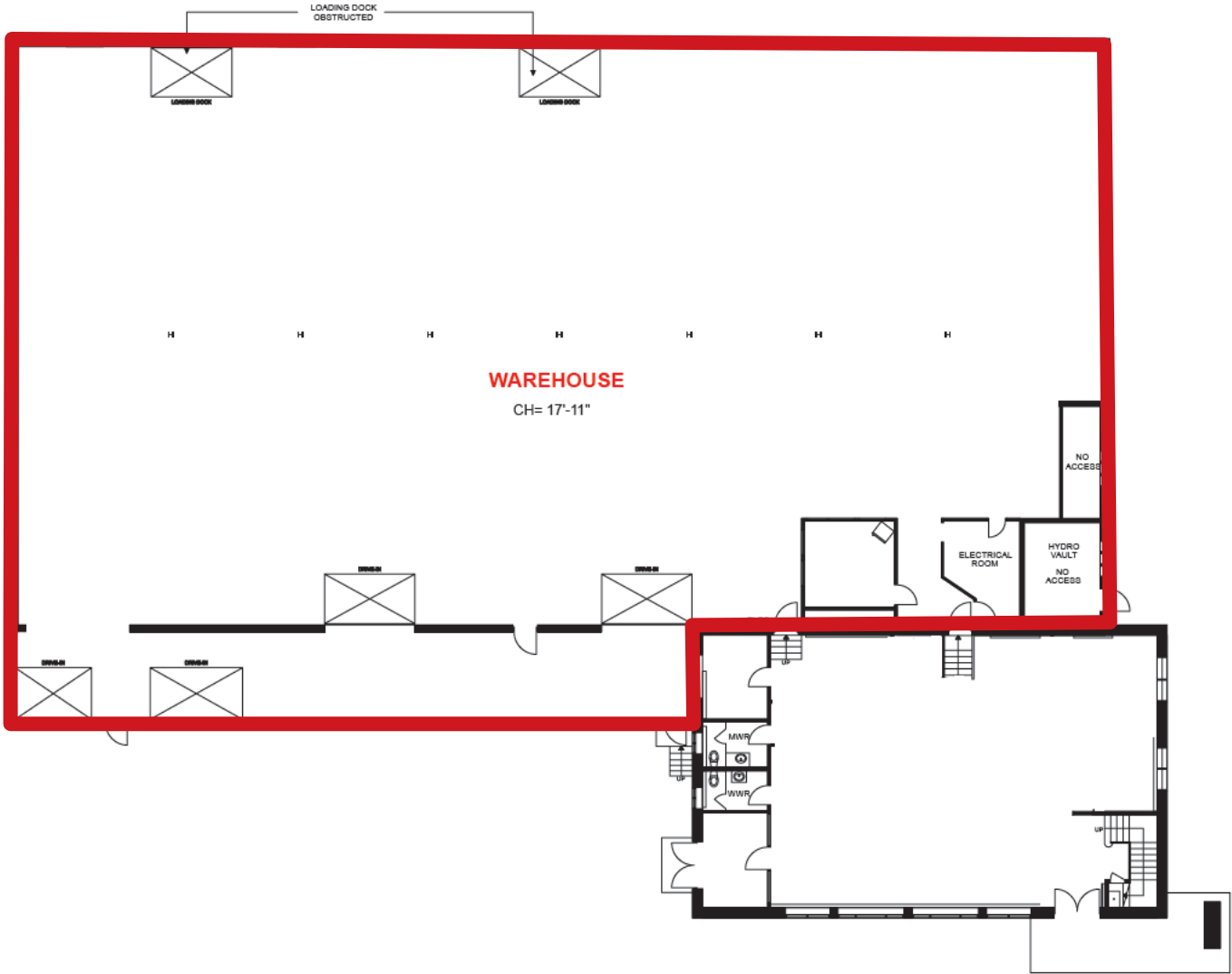
## **Pure Warehouse Space for Lease in Great Location**

### **Property Highlights**

**NET RENT \$15.00 / SF**

- Easy access to highways 15, 40, 520, 20 and 13
- Bright, whitewashed warehouse with new LED lighting
- Minutes away from restaurants & shopping
- 15 minutes from the Champlain and Mercier bridges and 20 minutes away from the Montreal-Pierre-Elliott Trudeau International airport
- Close to public transportation (Bus # 115 to Namur metro station)
- Dense population, large labor force

# Floor Plan



## Property Details

Total Warehouse Area	12,675 sq. ft.
Clear height	16'
Shipping doors	1 truck-level 1 drive-in door
Zoning	Industrial, Commercial & Automotive
Availability	Immediate





## Aerial View



## Financial Information

### NET RENTAL RATE:

\$15.00 / SF

### ADDITIONAL RENT:

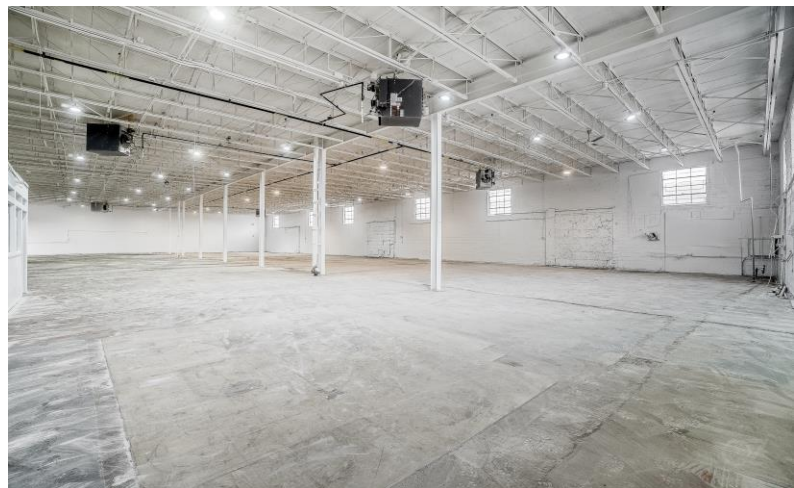
\$3.85 / SF

### UTILITIES:

Metered







**Brandon Allen, SIOR**  
Executive Vice President  
Certified Real Estate Broker  
+1 514 402 6052  
[ballen@savills.ca](mailto:ballen@savills.ca)

**Antoine Dumas**  
Associate  
Commercial Real Estate Broker  
+1 514 917 7760  
[adumas@savills.ca](mailto:adumas@savills.ca)

3773 boulevard Côte-Vertu, suite 160, Saint-Laurent, Québec H4R 2M3 | +1 514 416 1270

The information contained in this communication has been obtained from a variety of sources believed to be reliable but has not been verified. NO WARRANTY OR REPRESENTATION, EXPRESS OR IMPLIED, IS MADE AS TO THE CONDITION OF THE PROPERTY OR ACCURACY OR COMPLETENESS OF THE INFORMATION CONTAINED HEREIN AND SAME IS SUBMITTED SUBJECT TO ERRORS, OMISSIONS, CHANGE OF PRICE, RENTAL OR OTHER CONDITIONS, WITHDRAWAL WITHOUT NOTICE AND TO ANY SPECIFIC CONDITIONS IMPOSED BY THE PROPERTY OWNER OR LESSOR.