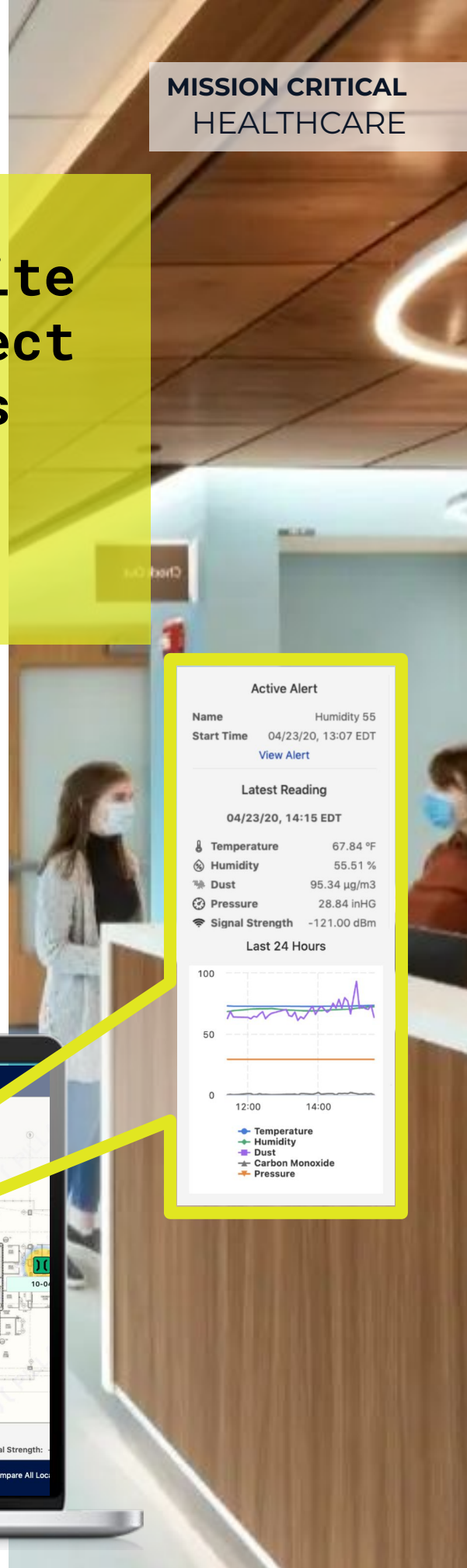




# PILLAR

MISSION CRITICAL  
HEALTHCARE

Pillar monitors jobsite environments to protect sensitive populations from the messiness of construction.



#### Active Alert

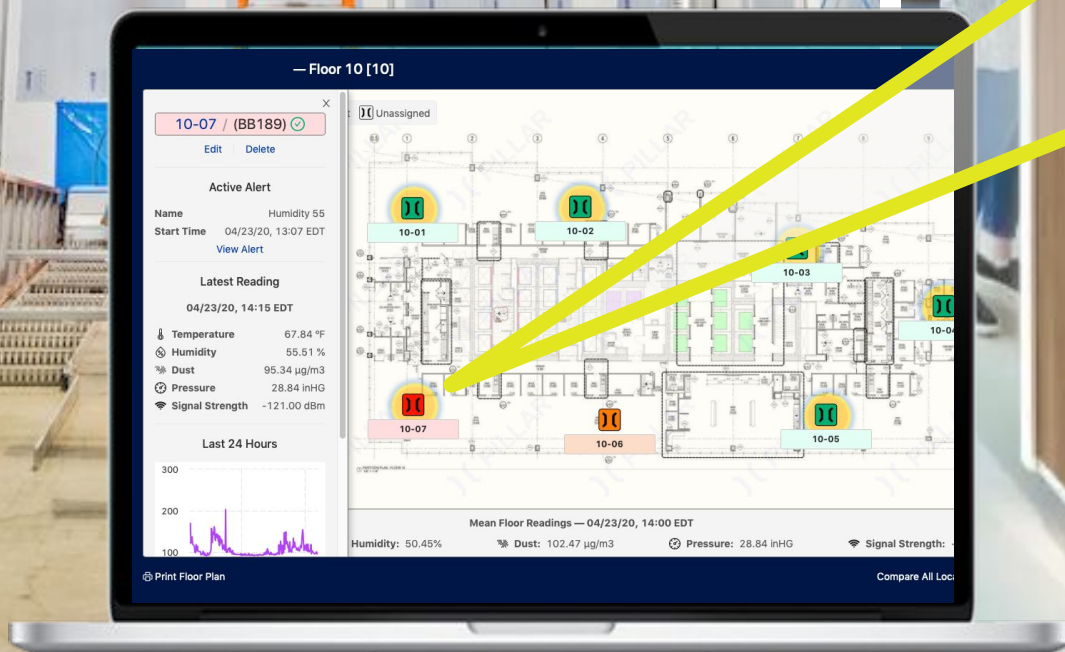
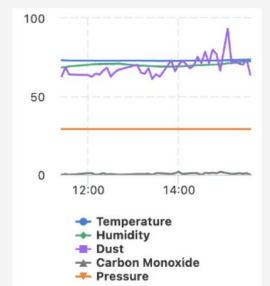
Name Humidity 55  
Start Time 04/23/20, 13:07 EDT  
[View Alert](#)

#### Latest Reading

04/23/20, 14:15 EDT

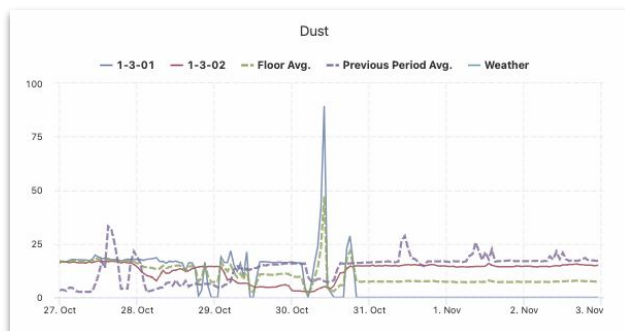
Temperature 67.84 °F  
Humidity 55.51 %  
Dust 95.34 µg/m3  
Pressure 28.84 inHG  
Signal Strength -121.00 dBm

#### Last 24 Hours



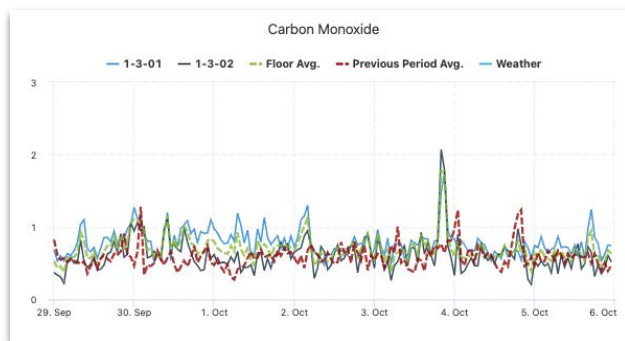


Healthcare job sites require fully-automatic, mission critical-grade, **real-time monitoring, alerts & reporting.**



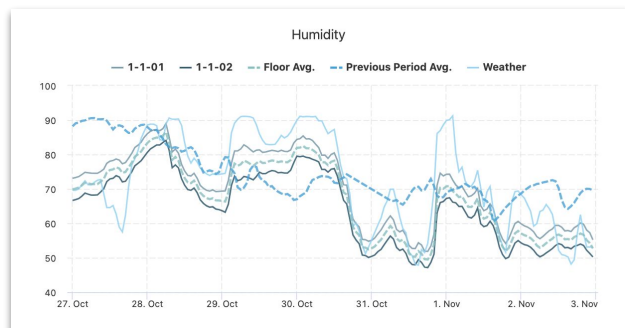
## Dust Alerts & Reports

Too high? Too high!! Remote real-time dust monitoring provides objective data for deploying additional air handlers to keep the job **clean**. Reports reveal trends that inform process improvements.



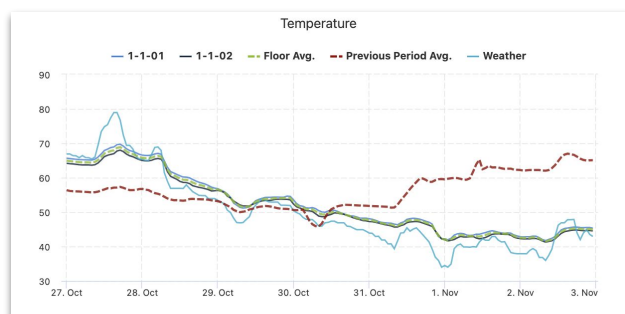
## CO Alerts & Reports

Invisible threat! Remote real-time Carbon Monoxide monitoring provides critical real time data to for managing air flow in active spaces to keep the workers and other people **protected**.



## Humidity Alerts & Reports

Too high? Too low? Electronics, concrete, drywall all require optimal humidity. From the threat of ESD, to delays in concrete curing, remote humidity monitoring helps to keep jobs **safe**.



## Temperature Alerts & Reports

Too high? Too low? Temperature affects everything from quality of power to the threat of burst pipes. Remote temperature monitoring enables real-time response for optimization as well as **protection**.

October 2023

## Pillar is back and better than ever...

Now on the **only network purpose-built for construction**, Pillar delivers critical real-time jobsite TXT alerts and automatic trend reports for temperature, humidity, and six other airborne conditions. These alerts reduce damage and create a paper trail that proves you did everything right when something goes wrong.

Turn it on, scan it in, and let it go to work.



### REMOTE RISK MONITORING

Remotely monitor for OSHA compliance and confidently provide safe working environments during new builds and throughout renovations. Get alerts, logs, and trends about unsafe environmental conditions sent right to your web-enabled device.



### FAILURE FORECASTING

Pillar software analyzes your job site data and delivers 'failure forecasts' that alert teams in real time to job site conditions that have a high-accident probability. This improves safety in the moment as well as informing changes to reduce accident-prone situations overall.



### CENTRALIZED EFFICIENCY

Whether you have 6 job sites or 639, a central team of analysts can monitor all of them remotely. With all of your data in one place, the best and the worst practices jump off the screen.



### OPTIMIZED FOR YOUR BOTTOM LINE

Clients choose Recon and Pillar because we keep them focused, connected, and poised to act on the critical data that makes a difference.

Every aspect of our technology and service is optimized for jobsite efficiency because our success is ultimately measured by your reputation and net savings to your bottom line.

**"I have never used an easier IOT solution."**

Ankoor Amin - Head of IOT at DPR



9 Environmental Metrics from 1 Plug-n-Play Device + Water Puck



TEMPERATURE



HUMIDITY



CARBON MONOXIDE



VOC'S



PARTICULATES



NOISE



LIGHT



PRESSURE



WATER CONTACT

## Recon continues to deliver once impossible IOT solutions.

Recon Dynamics leapfrogs legacy IOT technologies to remotely capture and transform industrial equipment usage data at a fraction of the cost. Ultra long-lasting, long-range, OTA programmable wireless tool & equipment sensors remotely capture second-to-second data without any labor intensive scanning or battery changes. Customizable reports deliver exactly the actions from the data that you need to generate measurable profits. Recon's serial innovators were some of the minds behind the development of both the US Cellular and original internet networks and bring decades of experience to wireless solutions that we now purpose-build for construction.

# Welcome to Effortless.