



# HYDROTAP G5 B100 TOUCH-FREE WAVE CHROME



**BOILING**

**FILTERED**

## Order Code H5W707Z00AU

Zip HydroTap Touch-Free Wave Boiling Filtered water uses smart infrared 100% touch-free operation that is activated with the Wave of a hand. The water system features a single under bench command centre including full colour interactive touch screen display with pin code protection and customisable settings including boiling water safety mode, 2 energy saving modes including ON/OFF timers and 2 hour sleep mode, 'Quiet' mode with automated intelligent fan speed adjustment, SteriTouch® antimicrobial protection impregnated into key water paths for enhanced hygiene, 100% water efficient air cooled technology and 0.2 micron water filtration.



Manufacturing Code	H5W707Z00AU
Capacity	Commercial
Boiling Cups per hour	240

---

<b>Tap</b>	Zip HydroTap Touch-Free Wave tap (Chrome)
<b>Water Pressure</b>	Min 200kPa - Max 700kPa
<b>Water Connection</b>	1/2" BSP (G1/2)
<b>Water Supply Requirements</b>	Cold
<b>Water Valves</b>	Integrated 500kPa Pressure limiting valve and Dual Check Valve
<b>Power Rating</b>	1.8kW 220-240V 50Hz
<b>Booster Power Rating</b>	Zip HydroTap Booster 2.2kW 220-240V 50/60Hz
<b>Power Supply</b>	2 x 10 Amp socket outlets
<b>Dimensions</b>	W280mm x D313mm x H333mm
<b>Product Approvals</b>	WaterMark, RCM
<b>Warranty</b>	5 years (appliance warranty 36 months plus additional 24 months tank warranty)

---

## Installation Requirements

1. Installation and connection of your Zip HydroTap must be carried out by a qualified person, observing national and local regulations. 2. You will require suitable mains electrical and drinking water connections, plus waste water drainage all within 1.5 metres of the product. 3. HydroTap is air-cooled so discrete cabinetry cut-outs are required for ventilation. 4. Installation on most bench tops is straightforward however some stone bench tops may require a specialised cutting service. 5. If you live in a hard water area, we recommend installation of a Zip scale filtration kit. 6. Installation by Zip Professional Service can be arranged with a phone call or through [www.zipwater.com](http://www.zipwater.com)

---

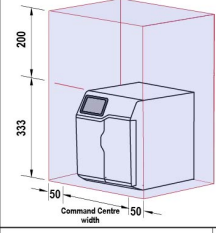
### Installation Detail

BKL2 HydroTap G5 v1.01 03.21 B, BA

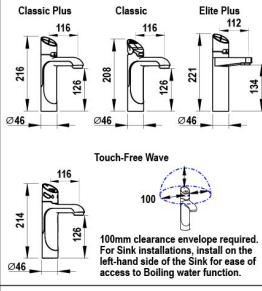
**Ventilation requirements** Contact your local service provider if ventilation is not suitable

**Clearance envelope**

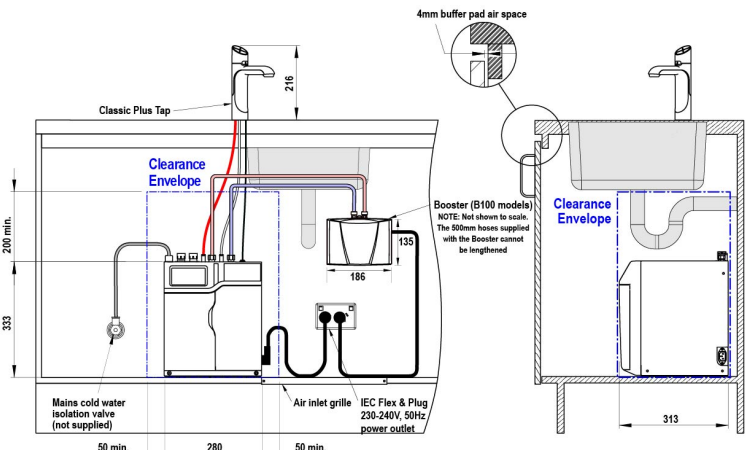
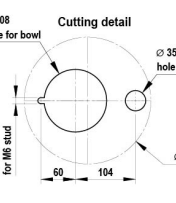
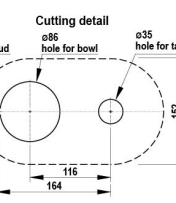
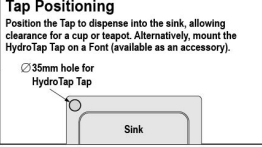
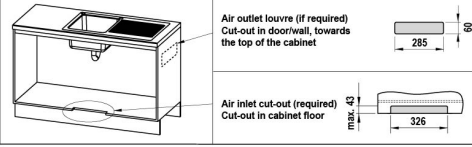
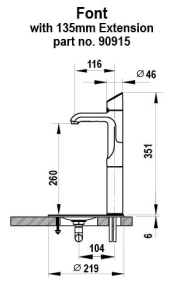
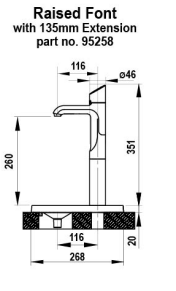
Position the Tap and the Command Centre as close together as possible.



**HydroTap Tap options**



**Font options**



**HydroTap G5  
B60, B100, BA60, BA100**

shown with "Classic Plus" Tap

SCALE 1:5  
ALL DIMENSIONS IN MM UNLESS OTHERWISE SPECIFIED. INSTALLATION DIAGRAMS ARE FOR ILLUSTRATIVE PURPOSES ONLY. HOSES ARE NOT SHOWN TO SCALE AND CANNOT BE LENGTHENED.