

Integrating Traditional and Modern Medicine to Improve Health Outcomes

Donald Warne, MD, MPH

Director, Indians Into Medicine

Associate Dean of Diversity, Equity and
Inclusion

UND School of Medicine & Health
Sciences





LAKOTA

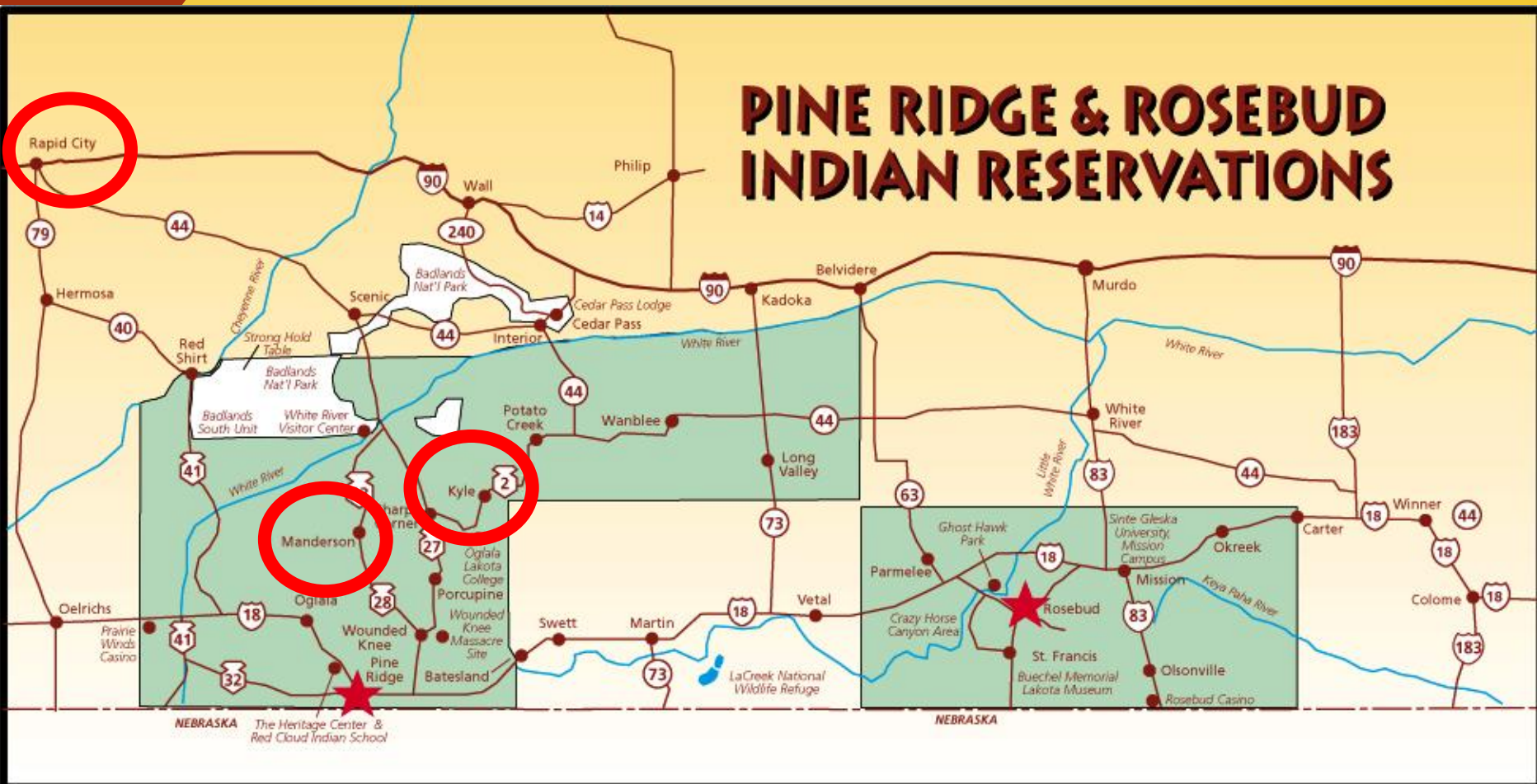
DAKOTA

NAKOTA





PINE RIDGE & ROSEBUD INDIAN RESERVATIONS



NEBRASKA The Heritage Center & Red Cloud Indian School

NEBRASKA



Pine Ridge Reservation Kyle, S.D.

A photograph of a sunset over a flat landscape. The sun is low on the horizon, creating a bright orange and yellow glow. The sky is filled with soft, wispy clouds. A winding road or path leads from the foreground into the distance. The overall scene is peaceful and scenic.

PHOTOGRAPHS
OF
RED CLOUD
AND
PRINCIPAL CHIEFS
OF
Dacotah Indians

TAKEN ON THEIR VISIT TO
WASHINGTON, D. C., MAY, 1872.

By Alex. Gardner,

For Trustees of Blackmore Museum,

SALISBURY, ENGLAND.







Traditional View of Public Health



A BRIEF HISTORY OF MEDICINE

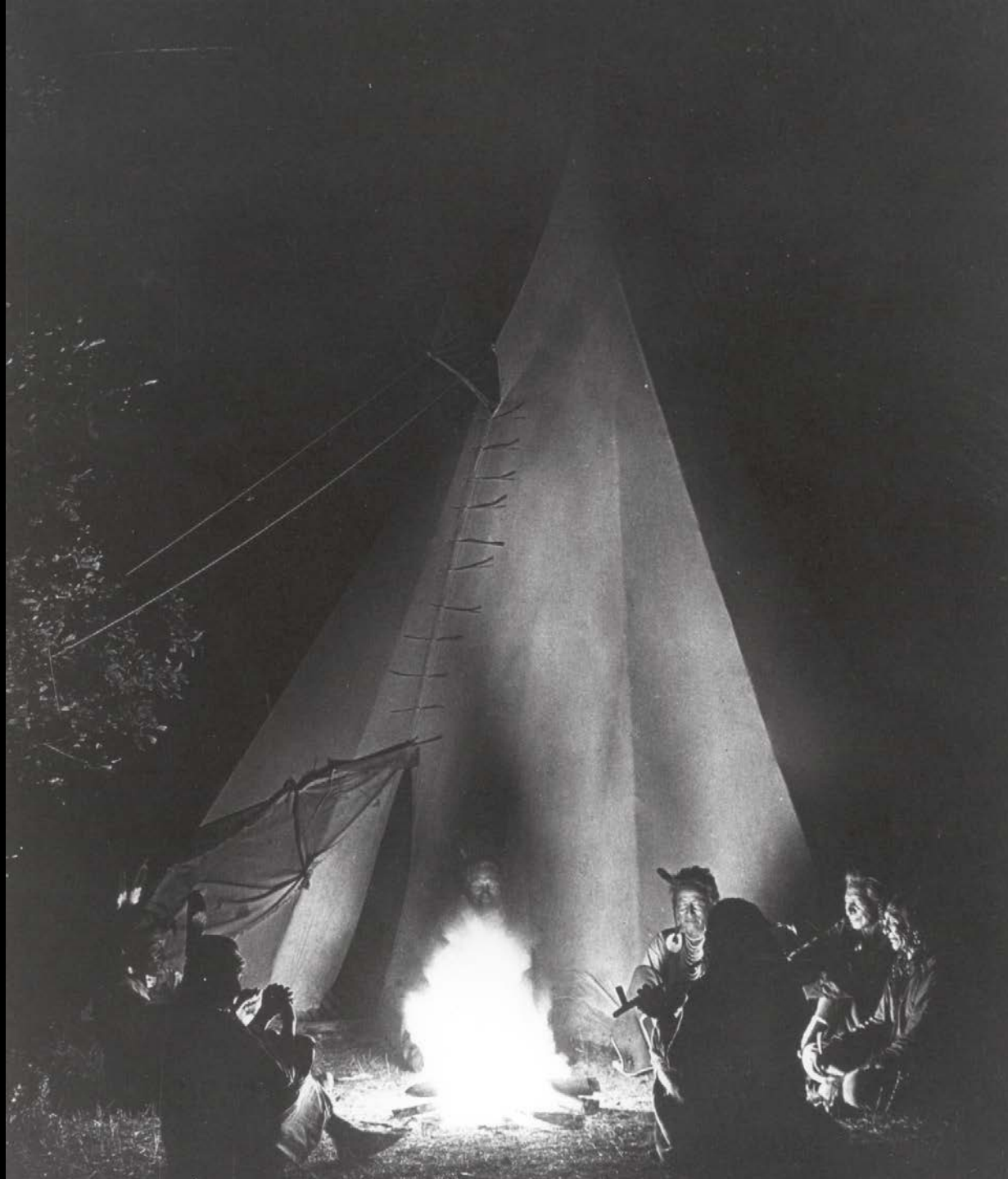
- 2000BC—Here, eat this root
- 1000AD—That root is heathen, here say this prayer
- 1800AD—That prayer is superstition, here drink this potion
- 1900AD—That potion is snake oil, here swallow this pill
- 1950AD—That pill is ineffective, here take this antibiotic
- 2000AD—That antibiotic is artificial, here eat this root

MODERN TRADITIONAL

• Model

Allopathic

Holistic



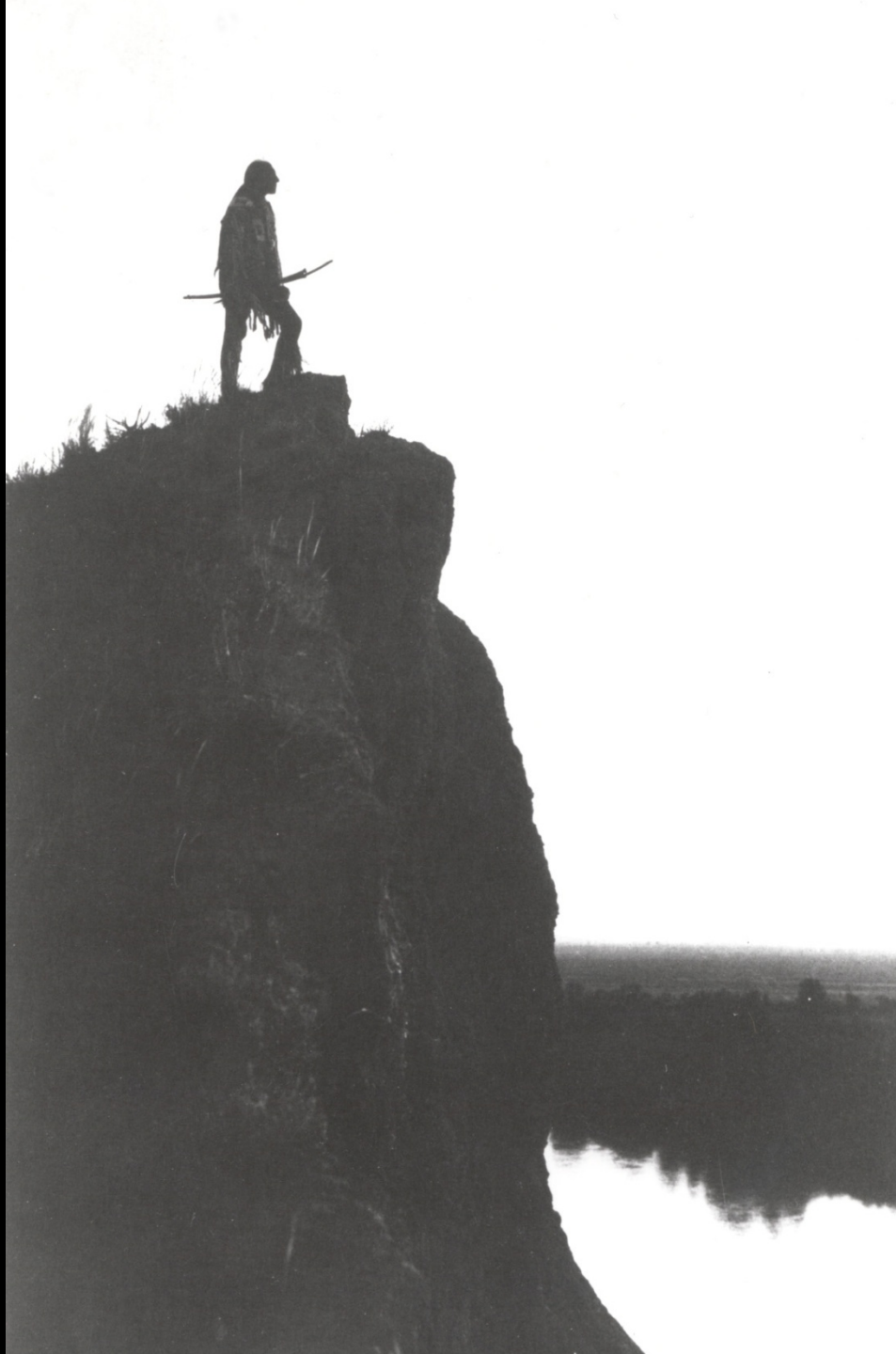
MODERN

TRADITIONAL

“Medicine”

Physical

Spiritual



MODERN

TRADITIONAL

• Communication

Linear

Circular



MODERN

TRADITIONAL

• Provider

Physician

Healer



MODERN

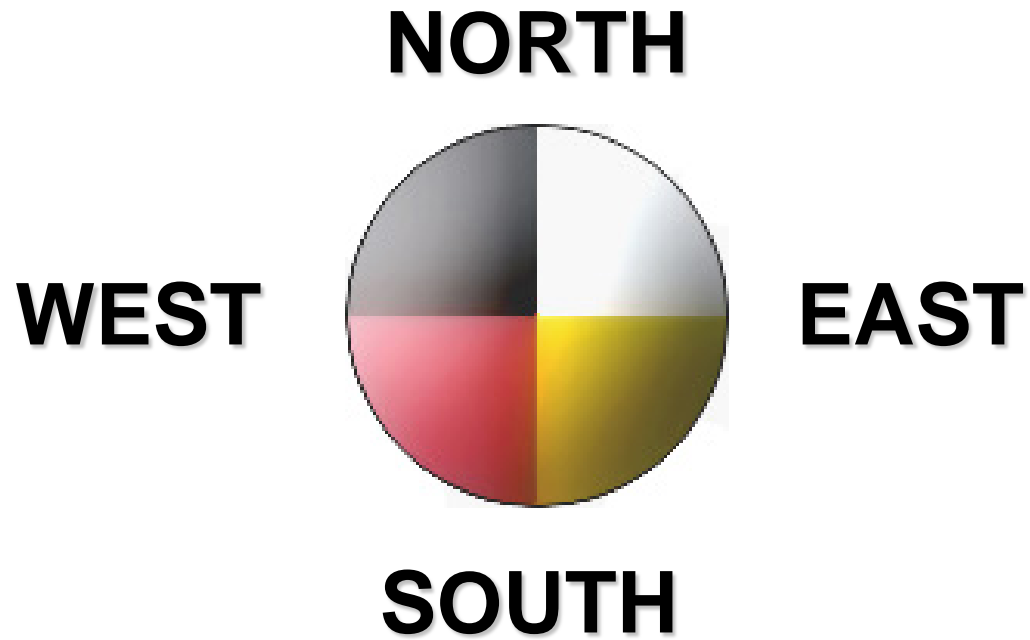
TRADITIONAL

- Symbol Serpent & Staff Medicine Wheel





MEDICINE WHEEL



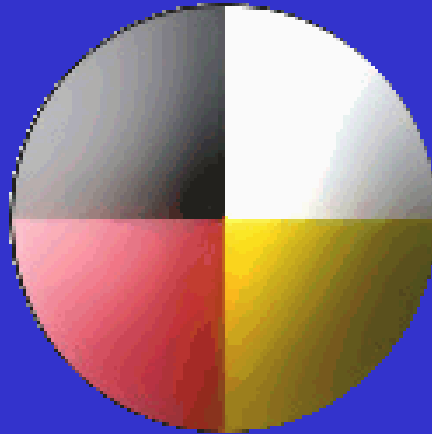
MEDICINE WHEEL



Traditional Systems of Diagnosis

MEDITATION

HERBS



PRAYER

COUNSELING

Key Components: Ceremony, Family &
Community Participation



MEDICINE WHEEL & Diabetes



Substance Abuse and the Medicine Wheel

- *What greater grief than the loss of
one's native land*
- Euripides
485-406 B.C.

MEDICINE WHEEL and Substance Abuse

DECISIONS



REACTIONS

MEDICINE WHEEL and Addiction

DECISIONS

**SELF-
MEDICATION**



**NEGATIVE
EMOTIONS**

MEDICINE WHEEL

MENTAL

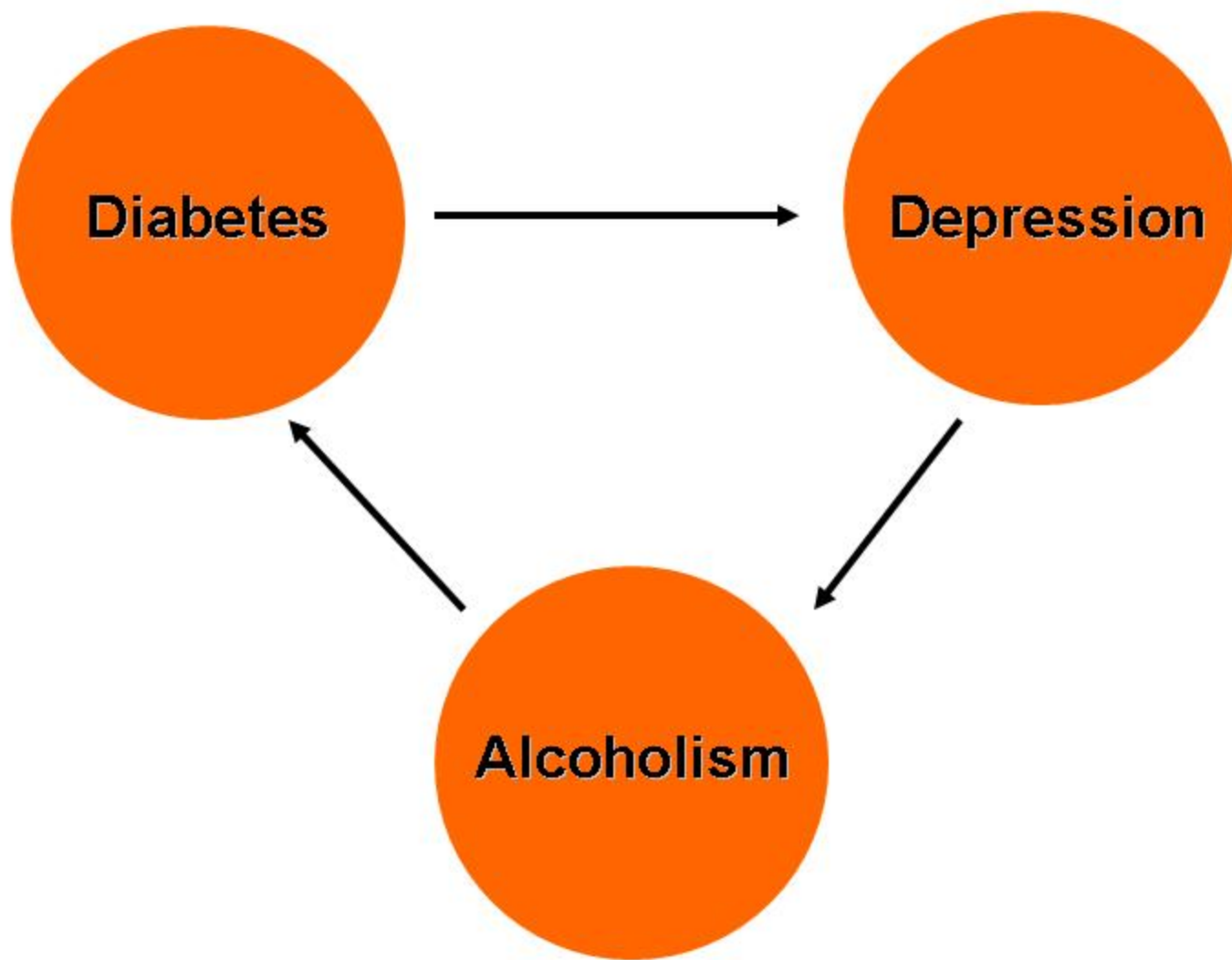
PHYSICAL



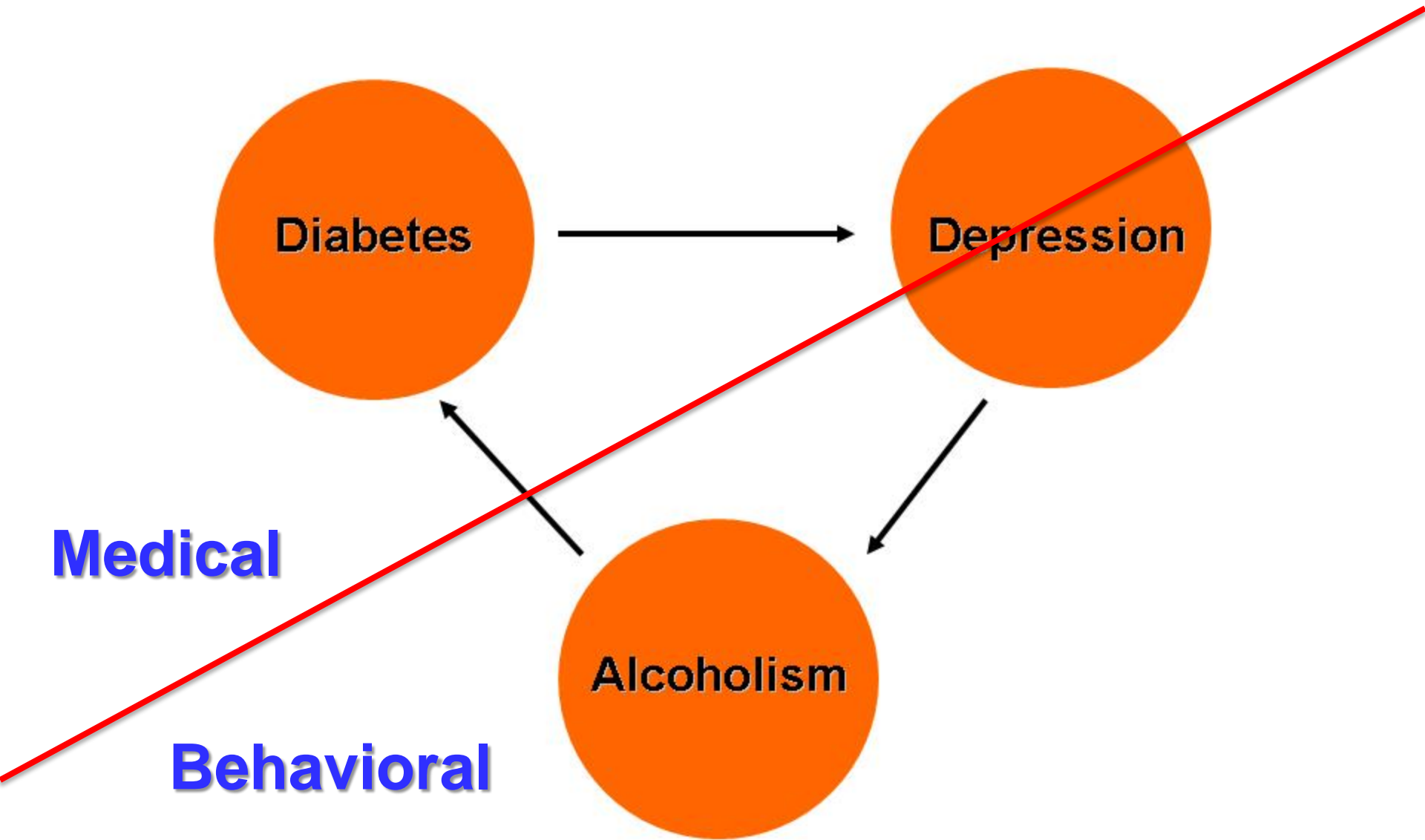
SPIRITUAL

EMOTIONAL

Diabetes-Depression-Alcoholism Triad



Diabetes-Depression-Alcoholism Triad



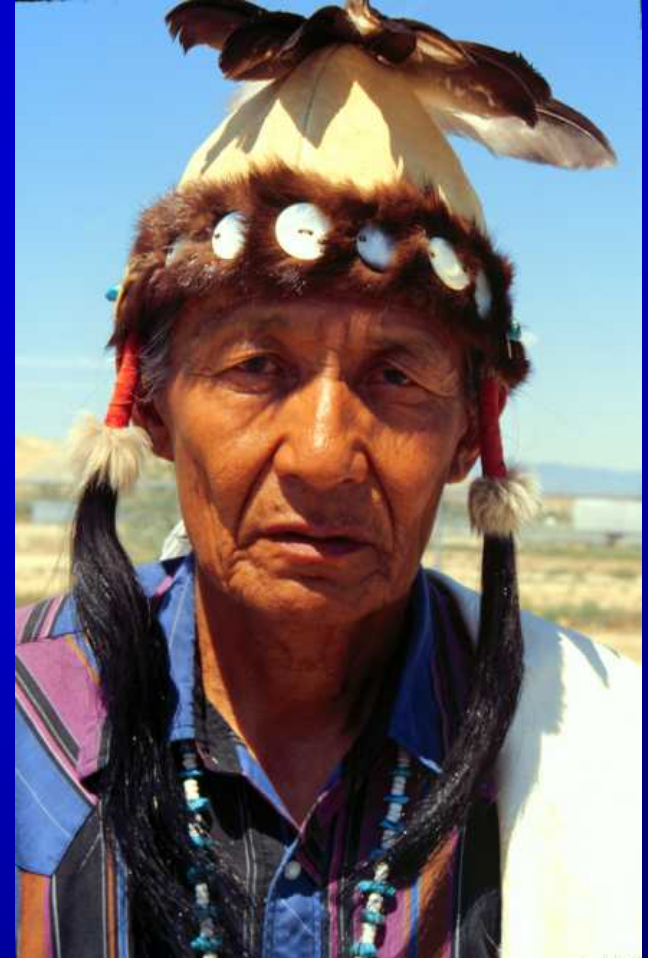
Sample Programs

- PIMC
 - Traditional Cultural Advocacy Committee
 - Sweat Lodge on Hospital Grounds
 - Intake Form
 - Urban Issues



Sample Programs

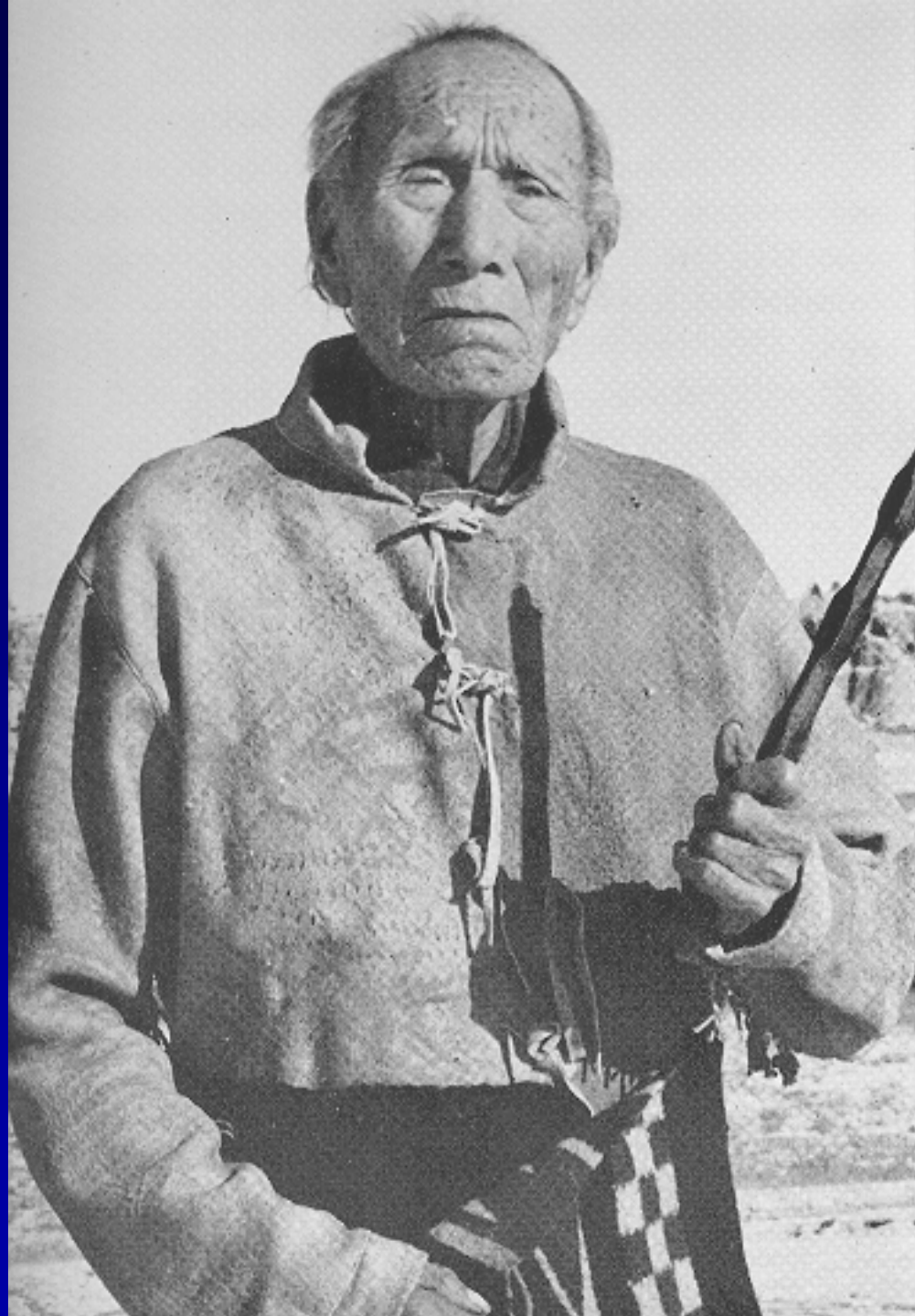
- Winslow Hospital
 - Medicine Man on Staff
 - Hogan on Hospital Grounds
 - Medicine Man's Association



Sample Programs

- Hu Hu Kam Memorial Hospital
 - Traditional Healers on Staff
 - BHC
 - RBHA
 - DEC
 - PL 93-638

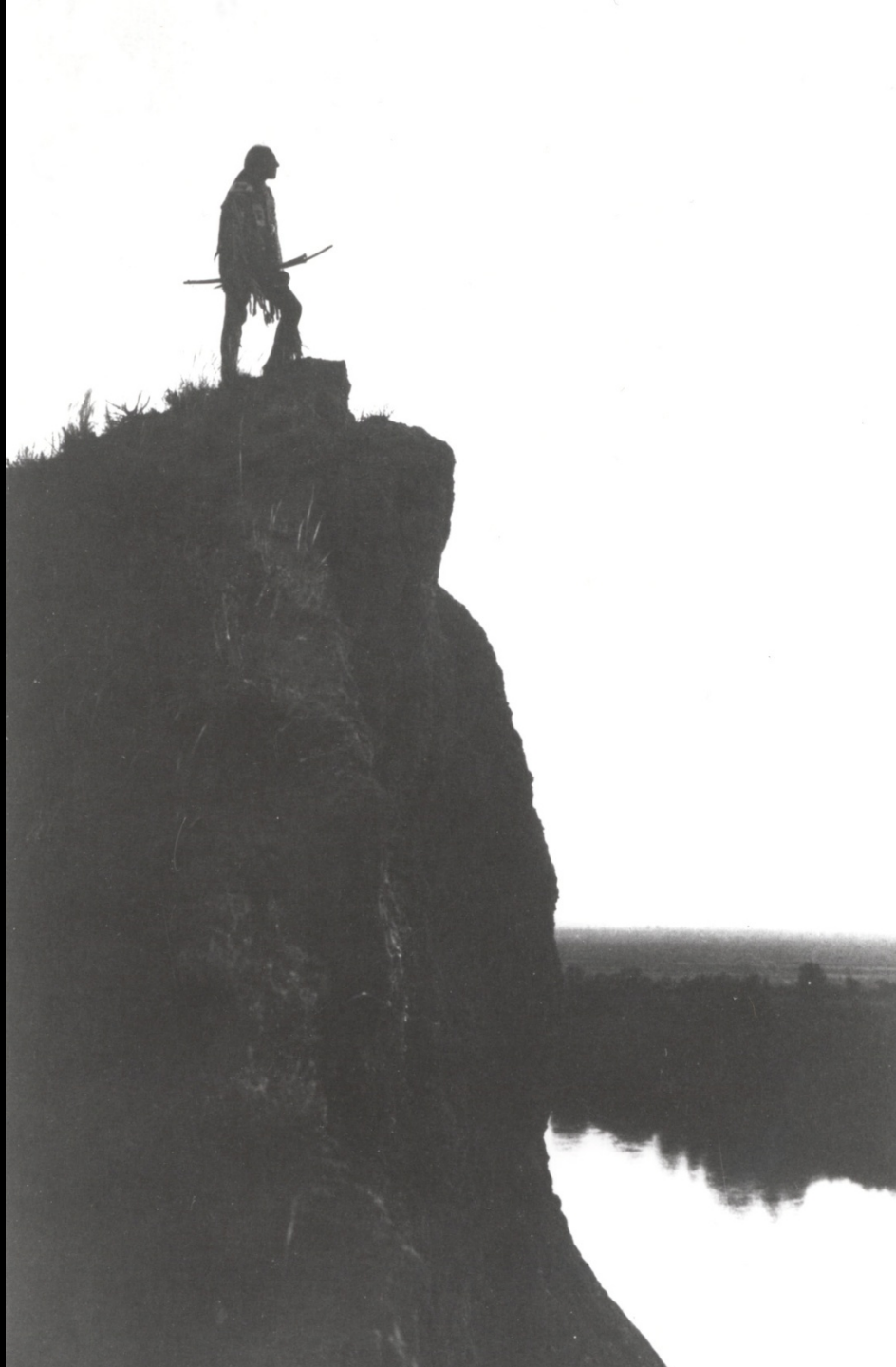




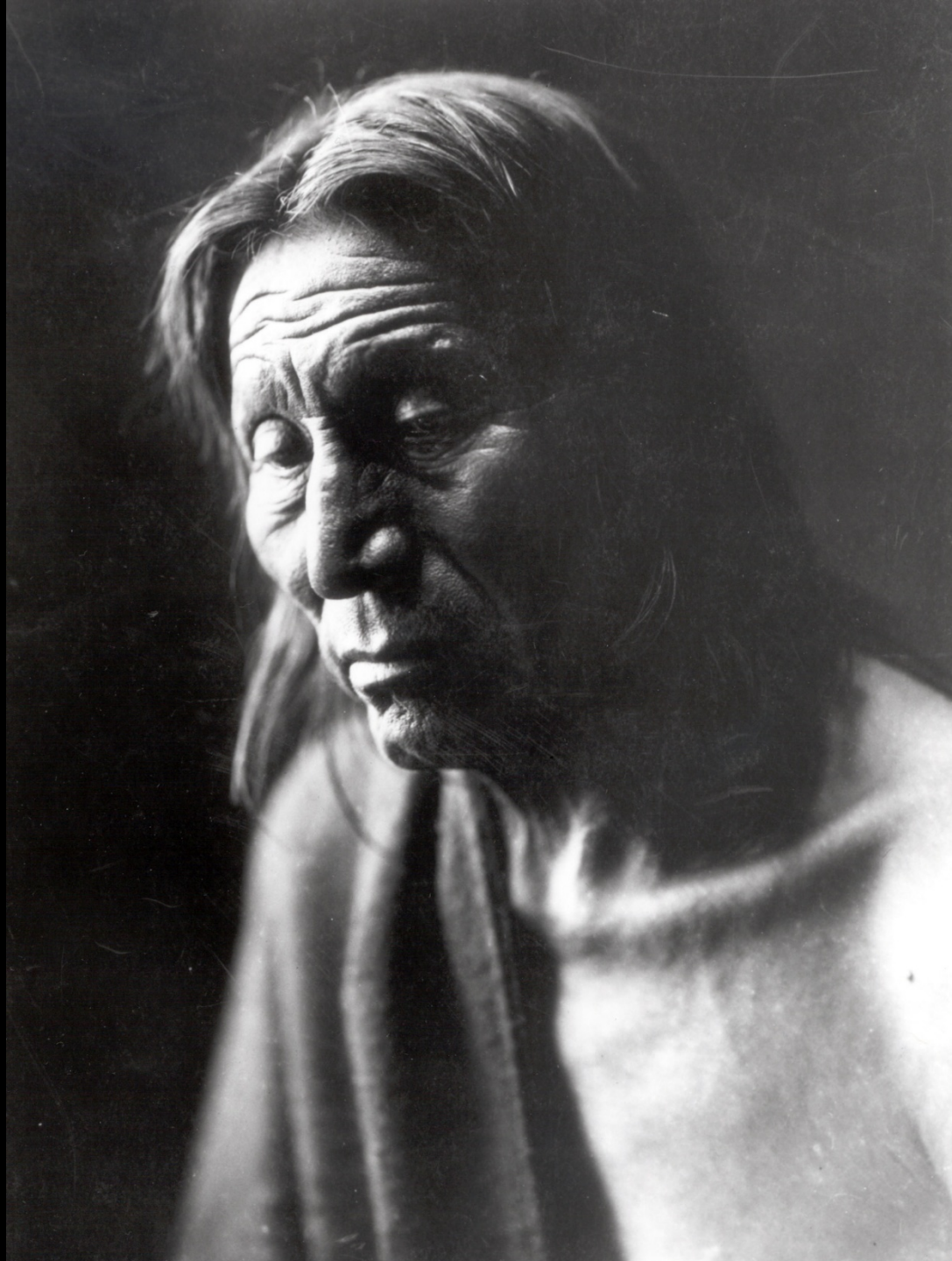
BLACK ELK

Of course it was not I who cured. It was the power from the outer world, and the visions and ceremonies had only made me like a hole through which the power could come to the two-leggeds. If I thought that I was doing it myself, the hole would close up and no power could come through.













donald.warne@med.und.edu