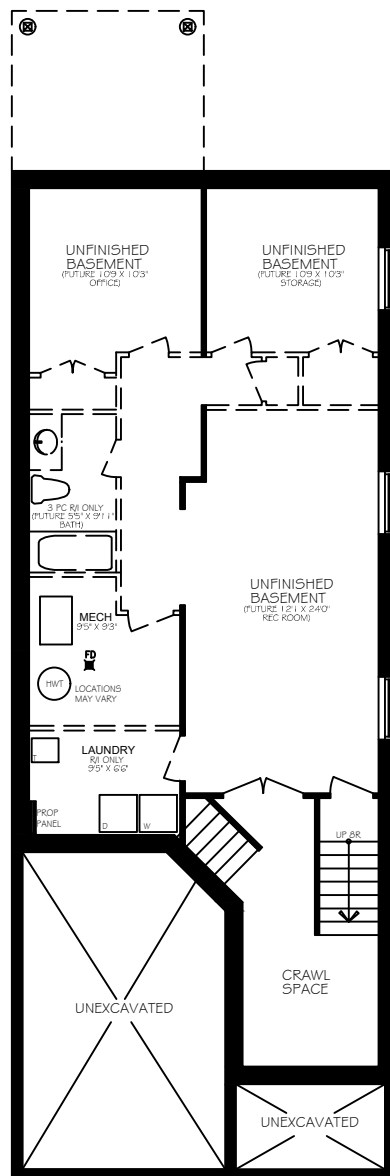




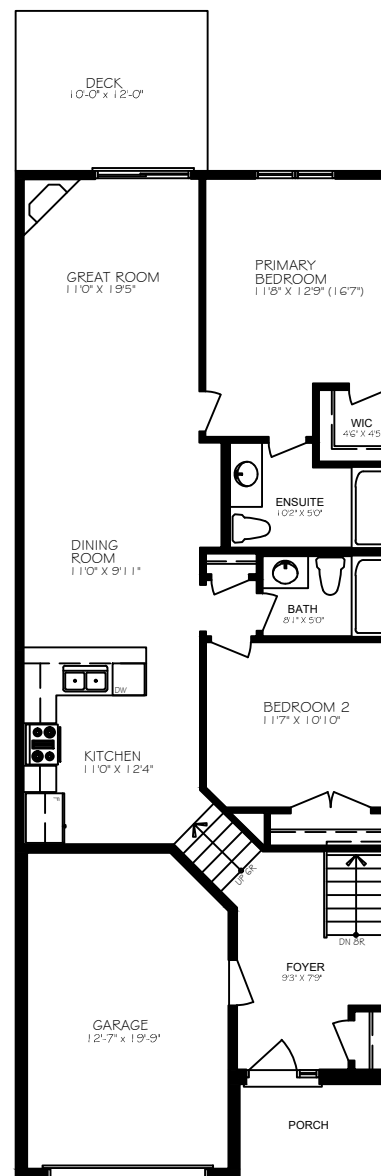
JORDAN ELEVATED

1183 sq ft
MAIN FLOOR

ALL DIMENSIONS APPROXIMATE E. & O.E. AND
SUBJECT TO CHANGE WITHOUT NOTICE. ALL
ELEVATIONS ARE ARTIST'S CONCEPT OF
FINISHED HOME.



BASEMENT PLAN
(1176 sq ft IF FINISHED)



MAIN FLOOR PLAN
(1183 sq ft)

JORDAN ELEVATED

1183 sq ft
MAIN FLOOR