

Genesis 32

wall hung condensing boiler



MODELS

H

C

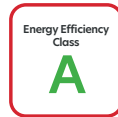
OUTPUT
(kW)

32.3

modutherm

Genesis 32

The Genesis 32 wall hung condensing boiler is available as a heating system boiler (H) or a combination boiler (C). The heart of the boiler has a highly durable stainless steel heat exchanger and offers an efficiency of 108% net. The Genesis 32 has a modulation range of 8:1, meaning it can turn down to 4.4kW for the lightest of application loads.



key features

- Stainless steel heat exchanger
- 8:1 modulation ratio
- Standard management of 2 heating zones with ambient room temperature sensors
- Combi DHW Flow of 16.2 (l/m)
- Electronic control
- Controls to manage two different types of thermal solar systems fitted as standard
- Weather compensation option

warranty

- 5 year warranty* on heat exchanger
- 2 year warranty* on parts



MODEL

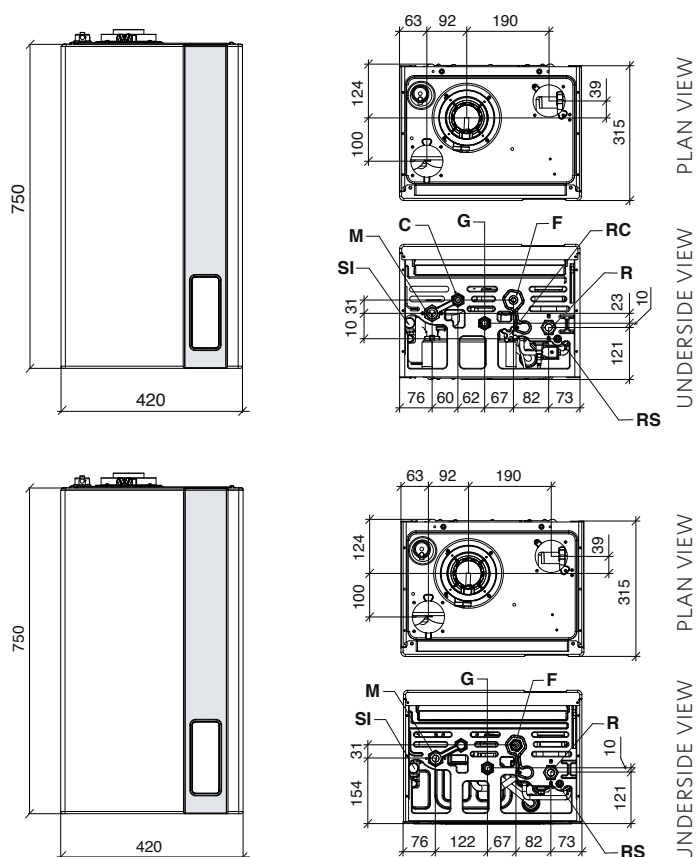
C



MODEL

H

SINGLE BOILER DIMENSIONS



MODEL

C

MODEL

H

- SI condense drain
- M central heating flow (3/4")
- G gas inlet (1/2")
- F cold water inlet (1/2")
- R central heating return (3/4")
- RS drain valve
- C dhw outlet (1/2")
- RC cold fill connection

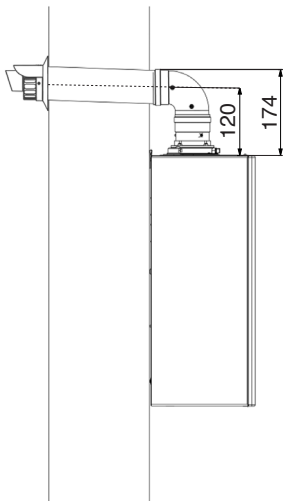
technical data

		MODEL	
		32C	32H
		A XXL	A
Energy efficiency class			
Nominal heat output (Pn)	(kW)	29	29
Seasonal energy efficiency of ambient heating (ηs)	(%)	93	93
Water heating energy efficiency (ηwh)	(%)	87 (**)	-
Nominal heat input (Qn)	(kW)	30.4	30.4
Nominal heat output (80-60°C) (Pn)	(kW)	29.4	29.4
Maximum boiler output (50-30°C) - NG & LPG	(kW)	32.3	32.3
Minimum boiler output (50-30°C) - NG & LPG	(kW)	4.4	4.4
Useful efficiency at nominal input (80-60°C)	(%)	96.8	96.8
Useful efficiency at 30% (30°C return)	(%)	108.3	108.3
Gas flow rate - NG	(m3/h)	3.22	3.22
Gas flow rate - LPG	(kg/h)	2.36	2.36
Heating circuit working pressure (min-max)	(bar)	0.5-3.0	0.5-3.0
CH temperature setting range	(°C)	20-78	20-78
Heating expansion vessel capacity	(l)	10	10
DHW circuit working pressure (min-max)	(bar)	0.5-6.0	-
Specific DHW flow ΔT=30K	(l/min)	16.2	-
DHW temperature range	(°C)	35-57	35-65(*)
NOx emission class 6	(mg/kWh)	26	26
Power supply voltage/frequency	(V/Hz)	230/50	230/50
Maximum power consumption (ErP)	(W)	99	99
Electric protection rating	(IP)	1PX5D	1PX5D
Gross weight	(Kg)	41.5	38.5

*with cylinder probe connected **when comfort (keep warm) function is disabled

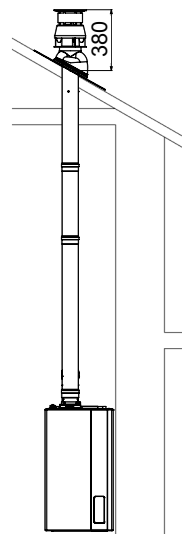
balance concentric flues

wall terminal kit



The balance flue wall terminal is Ø60/100. It is designed to terminate **horizontally** through an external wall, bringing in the combustion air from outside and exhausting the flue gases.

roof terminal kit



The balance flue roof terminal is Ø60/100. It is designed to terminate **vertically** through the roof, bringing in the combustion air from outside and exhausting the flue gases.

concentric flue fittings

The figures in the table are measured in metres and should be deducted from the maximum pipe length.

NOMINAL OUTPUT	32kW	
MAXIMUM PIPE LENGTH (m)	7	
Ø60/100	CODE	EQUIVALENT LENGTH (m)
Balanced flue wall kit (length 75cm) including 90° elbow	CF-60/100WK	1.5
90° elbow M/F concentric	CF-60/100-90B	0.5
45° elbow M/F concentric	CF-60/100-45B	0.5
Concentric 1 metre length M/F	CF-60/100-1ML	1
Concentric 0.5 metre length M/F	CF-60/100-HML	0.5
Balanced flue roof terminal kit	CF-60/100RTK	1.5
Adjustable roof flashing (18-44° angle)	CF-60/100ARF	0

For flue runs between 7m and 30m, Ø80/125 concentric flue can be utilised (contact sales office for details).



Modutherm Limited
Unit 4 Genesis
Endeavour Drive
Basildon, SS14 3WF

modutherm.co.uk

Tel: 0345 521 5666

enquiries@modutherm.co.uk

A member of the Modular Heating Group.