



# Your Ultimate Guide to Compass Pulse

Let Compass do the data crunching for you, so you can focus on decision-making!





Compass centralises all of your data so that you can manage it in a more efficient, secure and intuitive way.

### What is Pulse?

**Pulse is an analytics platform within the Compass portal that allows you to take this data to the next level and make insights-driven decisions to better support student outcomes.**

Pulling your school's wellbeing, learning and attendance data straight out of Compass, Pulse acts as a data visualisation tool that gives you a clear, personalised snapshot.

We know every school is different. That's why we have built an analytics platform that is user-friendly, low maintenance and able to be tailored to your school's needs.

# What can you do with Compass Pulse?



Quickly access only the data you need through easy to understand displays



Recognise which individual students and cohorts may need targeted support



Simply identify emerging attendance, behavioural and assessment trends



Get instant insights to feed into decision making around improving behavioural and academic outcomes



Increase staff collaboration and awareness with the ability to publish insights throughout your portal



Relieve your staff of data-crunching duties and save them time in their busy days



Convert your data into meaningful, easy-to-dissect and flexible reports



Remove the burden of data exports and managing multiple systems

## Pulse Supports School-Wide Positive Behaviour Support (SWPBS) Reporting Standards

If your school is implementing the SWPBS framework, you can feel confident knowing that Pulse can help you with your reporting objectives. Pulse can take the wellbeing data that already exists in Compass, help you visualise it in a way that is easy to analyse and assist you in identifying behavioural trends. A wide range of widgets in Pulse can be used as part of the 'Big 5' reports for SWPBS (Who, What, When, Where and Why).

# What Does Pulse Look Like?

Pulse can be found in the 'Organisation' tab (grid icon), under 'School Administration'. It is essentially a collection of Widgets, that all sit within Dashboards, which can be published to various different Contexts.

## Widget



A Widget is a visual representation of a predefined data set. Widgets sit within Dashboards and come in a range of display types (e.g. pie charts, heat maps, line graphs, tables etc) that can be configured in a variety of ways.

## Dashboard



A Dashboard is a defined collection of widgets that presents specific data for analysis. A Dashboard can then be published to a range of Contexts. You can add up to 12 widgets per Dashboard. You can also add the same widget multiple times to a Dashboard so that you can configure them in different ways to provide a range of comparative data.

## Context



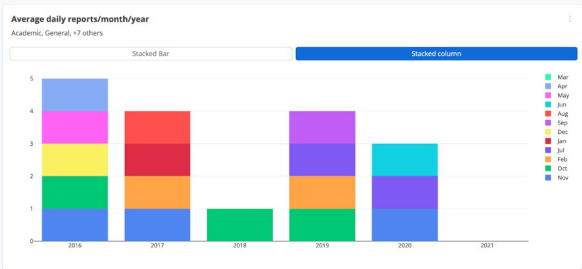
A Context is a location within Compass (e.g. Class Page, Year Level Page etc) that a Dashboard can be published to. Within the Dashboard, widgets enabled for that location will display data specific to that location's cohort.

# 70+ Widgets

Choose from over 70 widgets to visualise your data that is pulled from three key categories in Compass: Attendance, Chronicle and Learning Tasks.

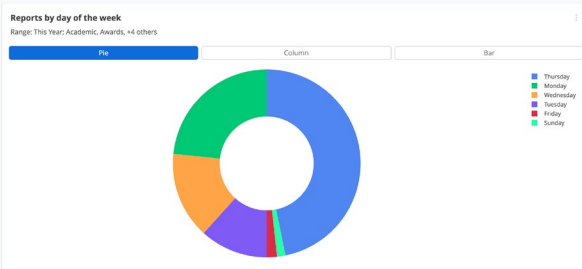
## Wellbeing Data

Chronicle



### Average Daily Reports/Month/Year

A stacked column showing the average number of daily Chronicle reports for each month. Several years of data are shown, if available, for comparison purposes.



### Reports by Day of the Week

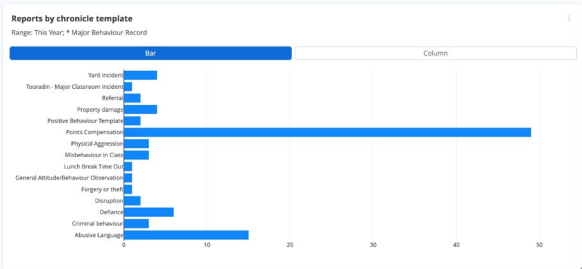
A visual representation of the aggregated number of reports on each day of the week over a selected date range.

**Tier 2 (2-5 reports) watch list**  
Range: This Year; \* Major Behaviour Record

| Student id | First name | Last name | Year level | Form group | House      | Number of reports |
|------------|------------|-----------|------------|------------|------------|-------------------|
| ASH0004    | Kenneth    | CLARK     | 10         | 10A        | RAVENCLAW  | 4                 |
| MAR0064    | Garrett    | MARTINEZ  | 6          | 06B        | HUFFLEPUFF | 4                 |
| LOW0010    | Samantha   | LOVELL    | 4          | 04A        | HUFFLEPUFF | 3                 |
| HAY0027    | Phoebe     | ARNOLD    | 1          | 00C        | GRYFFINDOR | 3                 |
| COL0045    | James      | PEAKES    | 5          | 05A        | GRYFFINDOR | 3                 |
| AIR0004    | Aidan      | MOORE     | 6          | 06C        | SLYTHERIN  | 3                 |
| CAR0050    | Edith      | ALLEN     | 5          | 05A        | GRYFFINDOR | 3                 |
| MAN0025    | Jasmine    | MANSOUR   | 3          | 03A        | RAVENCLAW  | 2                 |

### Tier 2 Watchlist

Identify instantly in a table which students have between 2 and 5 reports (Tier 2) in selected chronicle categories over a given time range.

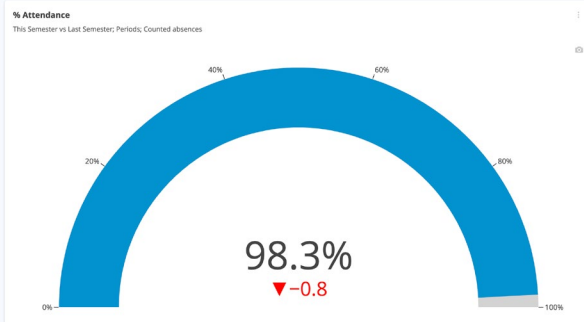


### Reports by Chronicle Template

A bar or column graph representing reports for each template in selected chronicle categories over a specific date range.

# Attendance Data

Attendance



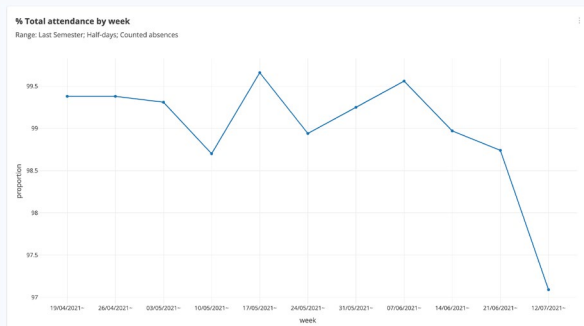
## % Attendance

Shows percentage of attendance over a selected date range, and compares it to that of a second selected date range. An upwards (green) or downwards (red) arrow indicates an increase or decrease from the date range you are comparing.



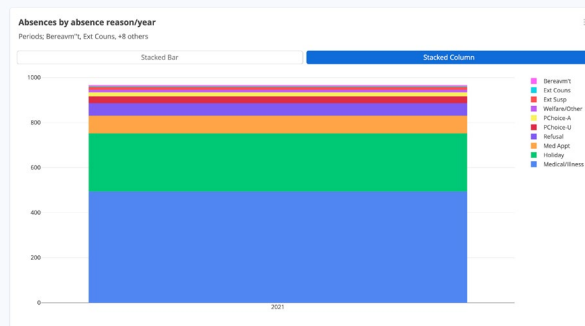
## % Absences in Selected Absence Reason/ Period/Day of the Week

A heat map that instantly reveals which days and periods have higher percentages of absences. Visualise the percentage rate for each selected period each day of the week and over a chosen date range.



## % Total Attendance by Week

A line graph showing % of attendance each week. Data is collated from either half day or period attendance records.



## Absences by Absence Reason/Year

A stacked column displaying total absences grouped by absence reason per year. Several years of data are shown for comparison reasons.

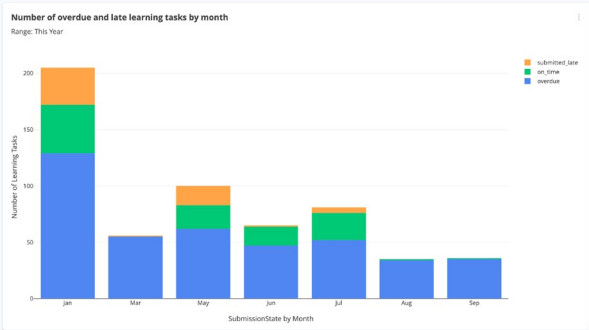
# Learning Data

## Learning Tasks

| Number of learning tasks by class/subject |                       |                          |
|---|-----------------------|--------------------------|
| Range: This Year                          |                       |                          |
| Class                                     | Subject               | Number of Learning Tasks |
| 00GEN_008                                 | Foundation Generalist | 15                       |
| 04GEN_04A                                 | Yr 4 Generalist       | 13                       |
| 10ENGA                                    | English               | 10                       |
| ENGA_04A                                  | Yr 7 English          | 6                        |
| 10BIOB                                    | Biology               | 5                        |
| 10ENGB                                    | English               | 5                        |
| ART_06B                                   | Art                   | 5                        |
| 10SPOB                                    | PE                    | 5                        |
| 06GEN_06B                                 | Yr 6 Generalist       | 5                        |
| 12ENGA                                    | Yr 12 English         | 4                        |
| 01GEN_01A                                 | Yr 1 Generalist       | 4                        |

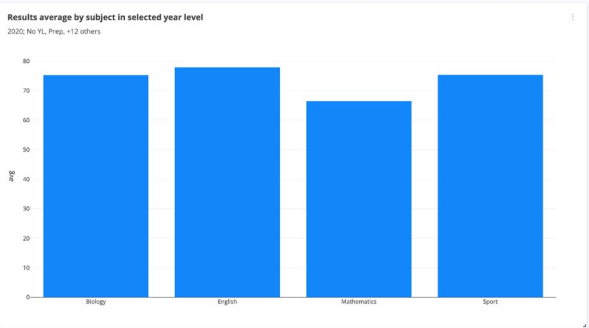
### Number of Learning Tasks by Class/Subject

Table showing which classes/subjects have the most or least Learning Tasks.



### Number of Overdue and Late Learning Tasks by Month

A stacked column showing the total number of Learning Task submissions in selected status (e.g. overdue, on time etc) over a specified date range.



### Results Average by Subject in Selected Year Level

Column graph showing the average result in each Subject for a particular Year Level. Discover which subjects yielded higher or lower results. Included components are those which are measured on a percentage scale.

| Number of learning tasks per student |           |            |         |                |         |         |       |
|--------------------------------------|-----------|------------|---------|----------------|---------|---------|-------|
| Range: This Year                     |           |            |         |                |         |         |       |
| Student id                           | Last name | First name | pending | submitted_date | on_time | overdue | total |
| AHE0012                              | AHEARN    | Caleb      | 0       | 0              | 0       | 1       | 1     |
| ALE0002                              | BESGROVE  | Bailey     | 0       | 1              | 3       | 5       | 9     |
| AND0001                              | ANDERSON  | Timothy    | 0       | 0              | 1       | 2       | 3     |
| AND0027                              | BLOURNE   | Bryce      | 0       | 1              | 2       | 5       | 8     |
| ARE0005                              | CARSON    | Bradley    | 0       | 4              | 1       | 1       | 6     |
| ARM0013                              | CHANG     | Brandon    | 0       | 1              | 1       | 7       | 9     |
| ARN0006                              | ARNOLD    | James      | 0       | 0              | 0       | 1       | 1     |
| ASH0004                              | CLARK     | Kenneth    | 0       | 1              | 1       | 7       | 9     |
| AUS0001                              | AUSTIN    | John       | 0       | 0              | 0       | 1       | 1     |
| BAN0003                              | BANNING   | Kelley     | 0       | 0              | 0       | 1       | 1     |
| BEA000706                            | BEAUPRE   | Julian     | 0       | 1              | 1       | 7       | 9     |

### Number of Learning Tasks per Student

Table showing the number of Learning Tasks for each student, broken down by the submission status of each task. Quickly identify students who have more overdue or late tasks.

## Can't find an analytics measure?

Let us know! We've committed over \$1M this year to building additional widgets and developing new functionality.



Our most recent functionality updates include the ability to rename widgets, the ability to configure widgets using dynamic date ranges and the ability to assign a Pulse dashboard to a student's profile, among others.

**Get ahead of the curve and save time on trying to make sense of your data - let Pulse take care of it.**