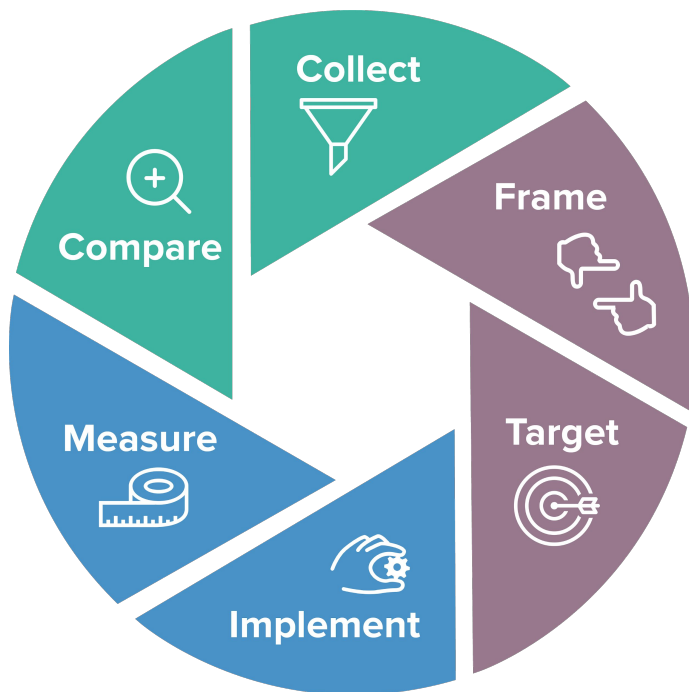


OUR MISSION

Recapture Waste & Regain Financial Security

Innovu provides transparency and accountability in healthcare to help employers and employees recapture waste and regain their financial security.



Innovu's Human Capital Analytics Lifecycle

Unlock Transparency & ROI

Innovu's multi-level platform provides three different views to unlock Transparency, ROI, and Accountability:

1. Executive Overview

Summary of financial performance, risk, and savings opportunities for Medical & Rx programs

2. Expanded Overviews

Identify trends and specific opportunities in all your critical areas

3. Targeted & Custom Dashboards

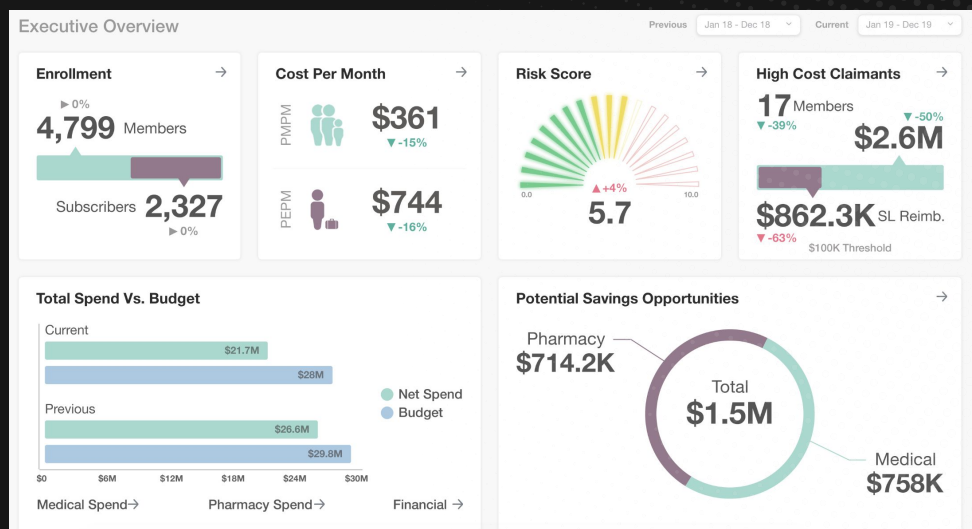
Drill down to diagnose and prescribe action

1. EXECUTIVE OVERVIEW

Critical information in one dashboard

Answer your questions with data and review key performance metrics in one easy to understand dashboard.

- Financial Performance, Medical, Rx, Enrollment, Risk and Savings Opportunities
- Datepicker allows user to easily select time periods for comparison to identify trends



2. EXPANDED OVERVIEWS

Dive a level deeper in key areas to identify trends, waste and opportunity.



Financial



Pharmacy



Cost Per Month



Risk



High Cost Claimants



Savings Opportunities



Enrollment

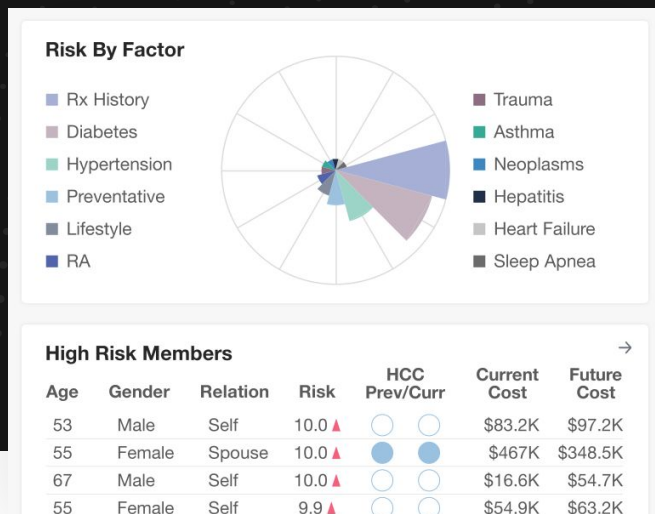


Medical

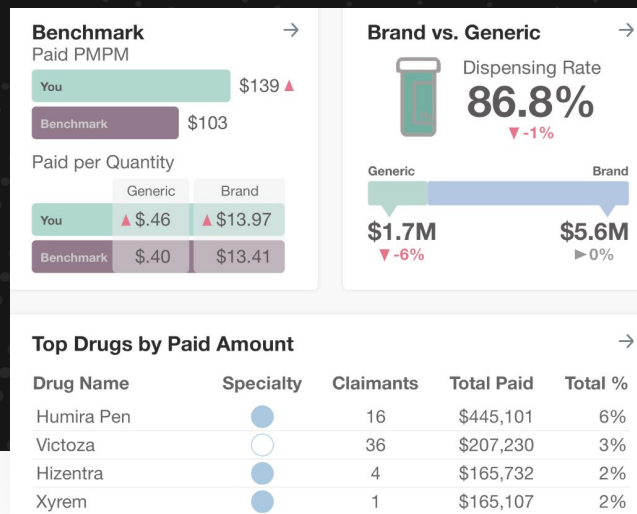
* Additionally, Innovu offers 80+ templates and dashboards as well as the ability to quickly and easily create custom dashboards.

Two examples of Innovu's Expanded Overviews:

Understand Risk Like Never Before



Manage Pharmacy Programs with Confidence



3. TARGETED & CUSTOM DASHBOARDS

Innovu & it's engagement model collaborate with you to build custom dashboards, and utilize robust models to answer ALL your questions and harvest ROI!

Rx Specialty Drug Paid PEPM and PMPM

