

# WHISTLER GYMNASTIC

## AGM 2022

### Report



**Monday June 27, 2022**  
**6:00 – 7:30pm**  
**Whistler Athletes Centre, 1090 Legacy Way**  
**2<sup>nd</sup> floor of Whistler Gymnastics**



<b>TABLE OF Contents</b>	<b>2</b>
<b>Agenda</b>	<b>3</b>
<b>Minutes from 2021 AGM</b>	<b>4</b>
<b>Organizational Structure</b>	<b>10</b>
<b>Financial Reports</b>	<b>11</b>
<b>Budget 2022-2023</b>	<b>17</b>
<b>President's Report</b>	<b>21</b>
<b>Operational Report</b>	<b>22</b>
<b>Recognition</b>	<b>24</b>

# ANNUAL GENERAL MEETING

## AGENDA

### Monday June 27, 6PM –7:30PM

Performance Hub, 2<sup>nd</sup> floor of Whistler Athletes Centre

Appetizers and drinks will be served for adults, open gym for members 6+, you must RSVP



#### AGENDA:

- 1) Approval of 2022 AGM Agenda
- 2) Approval of Minutes of AGM 2021
- 3) President's BOD Report – Tami Mitchell
- 4) Annual Financial Reports –Natalie Percival
- 5) Operational Report- Catou Tyler
- 6) Motions to Affirm BOD resolutions.
  - Motion to affirm **Financials year end 2021-22**
  - Motion to affirm **2022 – 2026 Strategic Plan**
  - Motion to affirm **Organizational Structure 2022-2023** with the following changes of note:
    - Position of Club Manager to include duties of Program Manager, not to be filled separately this year.
    - Club Administrator to be promoted to Business Manager to include duties of Personal Manger.
  - Motion to approve **Operating Budget 2022-2023**
  - Motions to affirm **WG leases WSL Accommodation for 2 studios to help with recruitment of new coaches.**
    - Whistler Gymnastics will lease 2 studio apartments to help with coach recruitment at a cost of \$1,055/ month.
  - Motion to affirm **2022 – 2023 program Fee Increase**
    - All program fees will increase by 3% due to costs of doing business
  - Motion to affirm **Gymnastics BC/WG Membership Insurance fee increase of \$10 for competitive and interclub only.**
    - Competitive membership/ insurance fee will become \$210 for competitive and\$110 for Interclub athletes.
  - Motion to affirm **Refund Policy fee of 10%**
    - A 10% admin fee will be taken for any refunds requested without a medical note.
- 7) Thank you to 2021/2022 Volunteers- Hodi's volunteer of the year award
- 8) Thank you to 2021/2022 Staff and coaches, Sheila Mozes Award
- 9) **Election of Board of Directors-** 3 positions needed election; and executive committee appointments by new BOD at the end of this AGM mtg.
- 10) **Confirmation of Next Meetings: WG BOD Sept 2022, WG BOD Club Mtg Oct. 2022**
- 11) **Close meeting**

# ANNUAL GENERAL MEETING



## MINUTES 2020-21

TUESDAY, OCTOBER 26, 2021

6:30PM – 8PM

*Meeting by Electronic Participation via ZOOM*

*1) All Club Members will receive Zoom link and protocol*

*Whistler Gymnastics members are encouraged to attend.*

### **AGENDA:**

**\*Reports posted on website [www.whistlerygymnastics.com](http://www.whistlerygymnastics.com) in AGM Annual Report**

**1) Welcome Members-Roll Call-Meeting Protocols, Declaration of Quorum 10.**

**Members present-** Tami, Susie, Nadia, Catou, Sheila, Karin, Audra, Dan, Jon, Allyson, Carri, Ryan, Karina, Norma, Maria.

**Members absent-** Wendy Miron.

Quorum requirement is met, 13 voting members present , 2 staff members.

**Chair-Pres-Tami Mitchell, Zoom host -Catou Tyler, Secretary -Susie Douglas**

**2) Approval of 2021 AGM Agenda- Motion to approve: First Susie, Second Dan.**

**3) Approval of \* Minutes of AGM 2020- Motion to approve: First Allyson, Second Audra.**

**4) \*President's BOD Report – Tami Mitchell**

#### ***President's report By Tami Mitchell***

*By postponing our AGM till October for the second year in a row, I'm confident in saying on behalf of the board we are happy to share this report and feel good about the where the state of the club is at.*

*Big THANK- YOU to Catou and her team, Steve, Karin, Tanya, Cathy for keeping spirits high and providing quality gymnastics programing to the families in the sea to sky throughout the pandemic. It was so important to the staff and board to do everything in our power to keep the doors open so families felt safe attending gymnastics classes for both the physical and mental health of these athletes.*

*The current board is lucky to have had such great policies and procedures put in place by previous boards which was motivation to ensure our team set the club up for the future board members.*

*Operating through COVID challenged us all to be more innovative and put better communication systems in place.*

#### **BOD Highlights:**

- *Finalized a better financial reporting system to better track budget throughout the season.*
- *Policies and Procedures updated to keep up with min. wage increase, COVID HR policies and safe sport best practices and policy*
- *Recruiting and Hiring working committee was busy and successful to ensure all available management positions were filled.*
- *Build a strong relationship with the Gymnastics BC safety officer with Board insurance and club risk management policies*
- *Successful grant writing, gaming grant, Local Sport Relief Fund, Jumpstart, Community*



Foundation, RMOW's CEP, Canada's Summer student

- Kept up with the Federal and Provincial grants and subsidies.

Reflection on the board of director's goals for the past season.

- Improved communication throughout the organization and community
- Ensure Program and Business excellence
- Maintain financial sustainability and program affordability.
- Guide and direct grant applications and fundraising efforts.
- Maintain strong community relationships.
- Encourage the growth and involvement of our volunteer base.

#### **THANK-YOU'S**

It's time we say goodbye to 3 board members.

**Jon Decaigny** joined our board two years ago and was a rock to the group when dealing with difficult conversations, brought great best practices to our working board and kept the group on track if and when the conversation went off track. Thank you for your time, insight and commitment to the board.

**Allyson Sutton** brought community connection to our group, always in the know of events like WB Foundations classic, for Whistler Gymnastics to be part of and give back to the community. Thank you for your commitment and time on the board.

It's an end of an era that we are saying goodbye to **Audra Williams** who has been part of the club for 15 plus years and on the board or committees or volunteers for the same amount of time. Audra brought a calming and reasonable explanations to the board and killer Creek bread and BBQ/ beer garden fundraisers. Thank you, Audra!

#### **5) \*Annual Financial Reports –Claire Thornwaite / Nadia- See supporting documents.**

#### **FINANCE NOTES**

##### **2021 Notes to Financials:**

- Net Income of \$91,829 vs. a Budgeted Net Loss of \$3.6K; Main reason for this variance (\$95.5K) follow:
  - o CEWS receive totaled almost \$155K vs. a budgeted subsidy of \$60K; variance of \$94,840
  - o CERS received totaled approx. \$33.5K vs. a budgeted subsidy of \$14.5K; variance of \$190
  - o Fees Income were below budget by \$74.6K due to reduced capacities in the gym vs. what had anticipated.
  - o Other revenues were also down \$17K and mainly coming from the inability to host the Summer Classic
  - o Beyond the above subsidies and revenues variance, the team at Whistler Gymnastics did great job managing expenses and variable labour was adjusted based on needs: ▪ Total Labour costs before accounting for subsidies were below budget by approx. ▪ Program Expenses were below budget by \$28.8K. A large part of this variance is competitive teams not attending meets in person and therefore not costs assoc. with these events.
- The Net Loss at the end of the previous fiscal year (July 1, 2019 – June 30, 2020) was \$41.2K the part of the Net Income from this year is offsetting the Net Loss from the previous year. ● We are proposing to take approximately \$50,000 of this year's Net Income to increase our contribution to reserve funds as follow:
  - o \$25,000 to the Capital Reserve Funds with a current balance of \$15,970 as per the balance sheet on June 30<sup>th</sup>, 2021.
  - o \$25,000 to our Facility Maintenance Reserve Funds with a current balance of \$14,052.93 June 30<sup>th</sup>, 2021.
  - o Whistler Gymnastics has been balancing its budget annually with minimal opportunity to increase

contribution to these funds. The facility and the equipment are ageing, and we expect the need to access these reserve accounts in the future.

**2021 / 2022 Notes to Budget:**

- The team at Whistler Gymnastics is presenting a balanced budget for this fiscal year (July 1, 2021 to June 30, 2022).

- **Program Revenues \$492.3K**

- o the club assumes we will be able to go back to pre-COVID capacity therefore an increase program revenue of \$191K vs. 2020/2021 fiscal year.

- o Pre-COVID program fees were closer to \$560K so we are not assuming to get back to pre-levels, but we are bridging the gap.

- **Fundraising / Grant Revenues \$82.7K**

- o Gaming Grant received \$42.7K

- o Return of the Whistler Summer Classic contributing approx. \$25K to the bottom line as experienced in the 2018 – 2019 Fiscal Year (closer to \$30K in that fiscal year)

- o Other initiatives as in previous years such as Poinsettia's sales, Purdy's, volunteer levies, Municipal & Via Sport Grants

- **Facility Expenses \$125.6K**

**6) \*Operational Report- Catou Tyler** [Operational report BY CATOU TYLER, CLUB MANAGER](#)

**In summary:**

This past year has been very eventful with many covid regulations and changes throughout the season. From the November/February closures and from 2m to 3m socially distance, changing gym schedules, shorten training times and canceled classes became 'normal' last year. Coaches worked hard on keeping a positive gym environment for all athletes and participants in the gym.

**Highlights include:**

**Human Resources**

- The hire of Steve Shore, office coordinator. Steve has done very well at improving our online file management system, and will continue to upgrade the clubs operational systems to be easier to use and more time efficient.

- Lucy Stevens, new to the club, but not new to Gymnastics was the 2021 summer camp coordinator.

- Whistler Gymnastics received a Canada Youth Employment Grant which paid for some of summer staff salaries.

- This past season Oros had two program GFA coordinators, Tansy Powell who started the season needed to leave to go back to school at which time Adria Pitawanakwat stepped up. Adria will stay on as a coach for the next season at which time we started recruiting for a new GFA Head Coach.

- The hire of Leeann Irving as the Gymnastics For All (GFA) Head Coach for the 2021-2022 season is a win for the club as she has years of experience leading a team of physical education teachers and a gymnastics background

**Programming**

- The Pemberton Winter and Spring sessions with the covid regulations operated in a much smaller gym space, only permitted us to have 10 athletes in the gym at a time which was given to the more advanced recreational, interclub, athletes. There were very little GFA and Active Start Classes.

- Oros programs were running at only 2 groups in the gym with 16 participants.

- Oros held 9 weeks of summer camps with 141 participants!

- The Competitive programs continued regular training throughout the summer weeks for the first time.

- Oros registration doubled the Active Start Program, 41 last fall to 88 this Fall at Oros.

- Gymnastics Canada released a new Trampoline program called CanJump that Whistler Gymnastics is now using to program and evaluate the GFA Trampoline participants.
- Tanya Liquorish, head coach for Trampoline Gymnastics (GFA TG and CompTG) lead the competitive team through 3 virtual competitions. Ella Soane is the Gold Medalist of the Elite Canada Nationals for trampoline Level 5.
- Karin Jarratt, head coach for Artistic Gymnastics (WAG competitive) used the season for mostly skill development and had the team participate in a virtual competition.
- The management team is talking about sending a group to World Gymnastrada in Amsterdam 2023

### **Training**

- A Pre Coach-it-training course (Pre CIT) was not able to run during this season due to COVID but is now scheduled for November 7<sup>th</sup>, 2021 as we received a grant to fund this program to have participants start on their coaching pathway.
- The Club hosted a Foundations TG course in June 2021. Foundations AG, Foundations Intro in October 2021.
- I, Catou, stayed on as a member of the GBC Gymnastics for All committee for another year.

### **Thank-you's**

- Special Thanks to our Bookkeeper Claire Thornewaite for all her extra work this year with COVID refunds and being our leader with the Federal wage and rent subsidy benefits.
- Thank you to the management team, Steve, Karin and Tanya who took extra time out of their regular job duties to meet and discuss COVID protocol changes and ways to keep the coaching staff moral up during this difficult time.
- Another Special thanks to Tami and the executive board members, Susie, Nadia and Sheila for all the hard volunteer work to support the operations of the Club.

### **7) Motions to Affirm BOD resolutions.**

- **Motion to affirm \*Financials year end 2020-21** See supporting document.

**Motion passed with 11 Votes, 2 abstain.**

- **Motion to affirm \*Organizational Structure 2021-22** with the following changes of note:

See supporting document

- Position of Club Manager to include duties of Program and Personnel Manager, not to be filled separately this year. - Business administrative duties will be provided by a Club Administrator not Business Manager. - Program Support positions at Oros include: - Head Coaches for Gymnastics For All, Women's Artistic Gymnastics and Trampoline Gymnastics.

- Position of 'Club Harassment Officer' no longer required by GBC but to be replaced by third party 'Complaint Management Officer(s)' trained/experiences in handling Safe Sport and Employment Grievance issues. **Motion passed with 12 Votes, 1 abstain.**

- **Motion to affirm minimal fee increases 2021-22 and adjusted procedural changes** (designed to minimize financial impact to members) including:

o **Program fee base calculations and competitive meet calculations will remain similar to last year 2020-2021 with exception to:**

- Program fees to be increased 5% due to mandatory minimum wage adjustments.
- Program Fee increases for CPI 2% will not be charged and just be absorbed by WG this year. - Similar to last year, all class will be charged for 15 minutes more per class to accommodate enhanced cleaning for Covid. For short classes it will be added on but for longer classes this will be a reduction to the activity time.
- Program fee payment schedule for Competitive/Interclub (10 month long) programs will allow members to continue to prepay monthly instead of seasonally. Credit Cards are required to secure the payments.
- Additional training sessions for competitive athletes on topics such as mental training, and nutrition are being added to their program. This will include 4-6 sessions and the cost will be added into their fee schedule. The added cost is estimated to be an extra \$60 for the year.

o **Gymnastics BC/Whistler Gymnastics (WG) Membership Insurance** with noted items: - The annual GBC

membership increases are minimal and have been adjusted into your member fees. - However, the added one-year GBC insurance levy (5-30% depending on the program) will not be charged and will be absorbed by WG for this year again. - GBC membership insurance cost has increased for registered volunteers. This will continue to be covered by WG. - BOD and Officers Liability Insurance (including Employment Practise Liability) will be added to the General Liability Insurance that comes with GBC Club Membership. Cost estimate is \$500.

#### o Refund Policies

Refund policies\* have become more defined to include refunding for Covid Quarantining and Covid Closures.

**Motion passed with 12 Votes. 1 Abstain.**

**Notes from Zoom chat:** "I sent an email in September about fees because competitive trampoline did have an increase compared to last year and I still haven't received the answer. I don't feel I can vote in favor as I don't have the information. Steve mentioned that summer practices were built in the fees this season and this could be the reason of the increase in fees so I want to know when this was decided. Please enter in the board notes that I am abstaining from voting for this reason" (Norma)

**Explanatory note-** During the 2020/21 season the BOD voted to include summer training in competitive year-round programming. All base rate training fees remain the same, however the summer training fee is now included in the full year programing fee. This is an apparent increase only and applies solely to competitive Trampoline and Gymnastics programs.

#### • **Motion to revamp Volunteer Program to include the points of note:** -

Name changes to 'Parent Participation Program' and promotion as such.

- Volunteer levy will continue to be included in the fee charges. This levy will offset the operational cost of credits or payment.

- Personnel (staff or volunteers) may be paid to ensure that many of the **essential** jobs, previously supported by volunteers, such as cleaning are covered adequately.

- Volunteer refund credits will also be continued in-lieu of payment for volunteer positions and tasks. - Competitive/Interclub Parents are expected to...See details in attachment Parent Participation Program.

**Motion passed with 10 votes, 3 abstain.**

#### • **Motion to direct all fundraising efforts to the operational budget and disallow special fund-raising projects for this year.**

**Motion passed with 8 votes, 3 votes against, 2 abstain.**

**Notes from Zoom chat:** "I feel we should be open to specific fundraising opportunities as certain events or needs can come up throughout the year that may need additional fundraising efforts. I do still feel that a percentage of all fundraising efforts should still go to general operational budgets" (Audra)

• **Motion to approve change to Employment Policies and Procedures** Minimum Wages have been adjusted as government required and the club scaled associated increases adjusted with the addition of an upper-level cap to coaches' wages.

**Motion passed with 10 votes, 3 abstain.**

• **Motion to approve changes to Risk Management and Coaching Policies and Procedures** WG policies updated to include and coincide with new and revised GBC policies in the area of Risk Management on Safe Sport, Health and Safety, Coaching Requirements, Conduct & Behavior and Complaint Management.

- WG policy on added Gym Supervision 'requiring' Level 2 Certified Coach as gym supervisor to be amended to 'recommending'

**Motion passed with 10 votes, 3 abstain.**

• **Motion to allow a system of seasonal operating budget adjustments by the BOD** - This is recommended to better monitor and analyze to year-end projection. The proposed annual budget must still be brought to the AGM for approval.

**Motion passed with 10 votes, 3 abstain.**

#### • **Motion to continue the pursuit of a permanent facility for our Pemberton gymnastic operations.**

**Motion passed with 10 votes. 3 abstain.**

**Notes from Zoom chat:** "I am abstaining on this because I fully support the Pemberton facility I am still concerned about the financial viability with a long term lease" (Dan)

• **Motion to approve \*Operating Budget 2021-22**- See supporting document.

**Motion passed with 9 votes, 1 vote against, 3 abstain.**

• **Motion to approve \*Capital Budget 2021-22** - See supporting document This is to be tabled to the next board meeting.



• **Motion to recognize the following significant club items: -**

- Safe Sport, Gym Safety, Inclusive Programming, and a Healthy Work Environment are priorities in our club. All members, participants, parents, volunteers, and staff must support club efforts to put these priorities into practise and conduct themselves accordingly.
- Stay informed on the current Communicable Disease and Covid Protocols in place at WG. These have been changing frequently and the most current will be posted on the website.
- Upon registration GBC/WG still require the signing of Acknowledgement of Risk and Declaration of Compliance with Communicable Disease and Covid Protocols. All guests and adult associate members will also require completion of these forms as they sign in.
- Club communication is centralized through [info@whistlerygymnastics.com](mailto:info@whistlerygymnastics.com) and information shared on our website [www.whistlerygymnastics.com](http://www.whistlerygymnastics.com)
- Reminder to parents it is their responsibility to communicate any medical concerns and limitations to the club business administrator to safeguard their children. This information will be only shared as needed with their coaches. - All registration and the payment are to be done on-line.
- Participants will not be allowed to start until all registration is complete including payment. So please do not put your children and our staff in a difficult position by sending them to start when registration and payment are not complete. Weekly class schedules are available on the website and registration seasons are as follows: - Competitive/Interclub - Annual Sept to June *\*Amendment- This is for JO level 6 and up, Level 3 Trampoline up.* Gymnastics For All Sessions; FALL: -Sept – Dec/ WINTER: Jan-Mar/ SPRING: Apr-June/ SUMMER: Late June - Aug./ Camps: Holiday's
- WG currently are not offering drop-in, parties.
- Bookings can be arranged for Cross-training and Associated Sport and School Groups.

**Motion passed with 10 votes, 3 abstain.**

**8) Thank you to 2021 Volunteers- Hodi's volunteer of the year award- For the gift of time.**

This award goes to a person who goes above and beyond, generously volunteering their time to Whistler Gymnastics.

*This year the BOD unanimously voted to recognize Tami for her enormous amount of volunteer time and dedication to the club. Thanks Tami!*

Thank you to 2021 Staff and coaches- Congratulations to Karin Jarratt for her 30-year anniversary (May 2021) with Whistler Gymnastics Club. A huge thank you for your dedication and commitment to the club and all the athletes over the years, you have made a huge impact on many peoples lives though your coaching.

*Sheila Mozes "For The Love of Gymnastics Award" – This year the award goes to Cathy Benns.*

*Rikka Tindal award- Awarded to Max Oughtred.*

**Election of Board of Directors 5-9 board positions: By acclamation if not exceeding number limitations.**

– Thank you to retiring BOD Directors: Audra, Jon, Allyson

– Nominations to date:

**Returning:** -Tami Mitchell, Susie Douglas, Nadia Demers, Dan Roth-Wallman, Wendy Miron

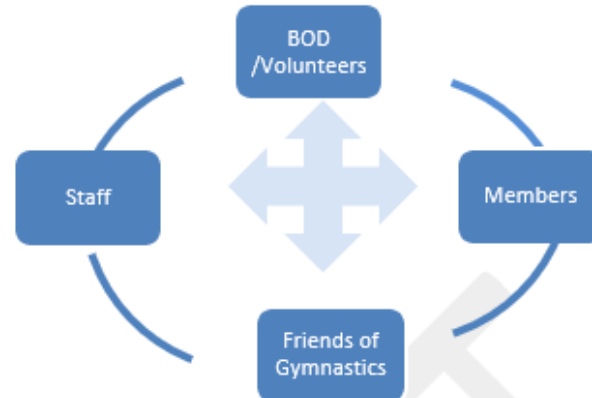
**New:** - Ryan Oughtred (present at AGM - accepted nomination), Natalie Percival, (Absent from AGM but accepted through email), Sally Whitehead (Not present at AGM we await nomination acceptance) Kelti Holdsworth (Not present at AGM- we await nomination acceptance)

Close AGM meeting 7.44pm

**Next BOD Meeting** – Set for Nov 22 6.45-8.15 pm

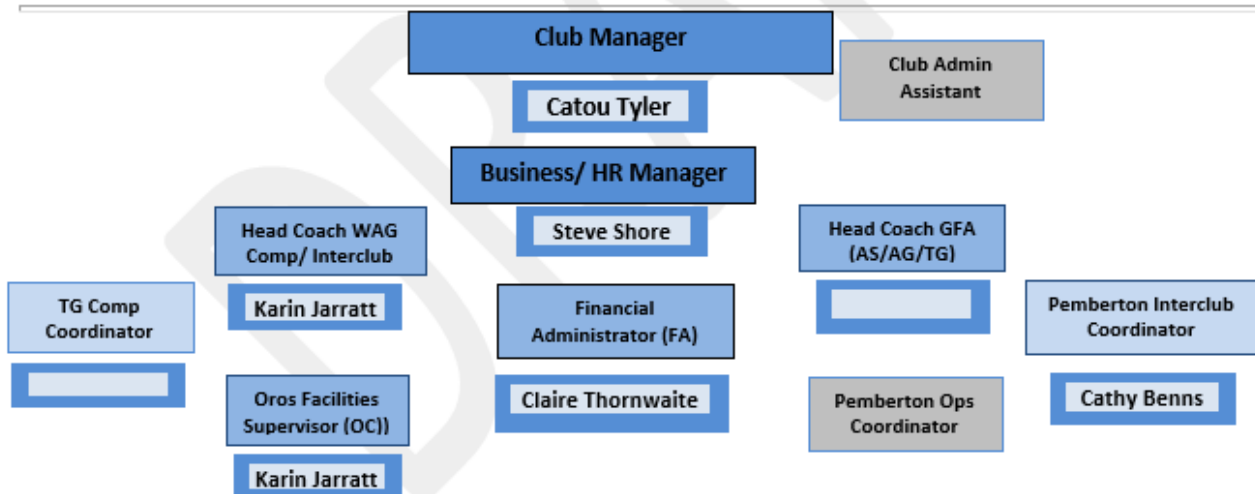


## Whistler Gymnastics Organizational Structure 2022-23-draft



### Volunteers and BOD

**Volunteer Membership**-registered adult members or designated parent of registered youth members and registered volunteers  
**Board of Directors (BOD)** 5-9 Directors elected annually from membership to form Board - positions include \*President, \*Vice President, \*Secretary/Treasurer, and Members-at-Large from: GFA, COMP and PEMBERTON  
**Volunteer Positions and \*Officers may include:-** \*Sport Advisor, \*Volunteer Coordinator, \*Funding Coordinator, \* Inclusion Advocate, \*Safety Officer \*Summer Classic Meet Coordinator, \*Policy & Procedure Advisor  
**Volunteer Committees: -Standing-**\* Executive Committee; **Special** – Hiring and Recruiting; Budgeting, Fundraising, Meet Hosting, Positive Work Environment, Pemberton Facility, Health and Safety



### Coaching Staff

Certified Coaches    Trained Coaches    Coaches-in-Training (CIT)    Pre Coaches-in-Training (PRECIT)    Volunteer Assistants

### Club and GBC Members

Club voting members:-Registered (annual) GBC participants and their designates, and registered volunteers  
 GBC membership types: - Annual, Casual, Associate (Schools/Sports Org), Non-Member Guest

### Friends of Oros

Guests, Partnerships, Sponsors, Donors, Supporter, Media, Community Groups & Associates

# FINANCIAL STATEMENTS

## Finances 2021- 2022

### Whistler Gymnastics Club Comparative Income Statement

	Actual 07/01/2021 to 06/15/2022	Budget 07/01/2021 to 06/30/2022	Percent
<b>REVENUE</b>			
<b>FEES INCOME</b>			
GBC Insurance/Admin Rev (Net)	7,913.46	15,000.00	-47.24
Comp & IC Meet Fees Rev (TG & AG)	23,720.00	40,000.00	-40.70
Comp Tramp Class Fees	44,944.82	49,450.00	-9.11
Comp Artistic Class Fees	56,439.31	66,960.00	-15.71
Interclub Class Fees	30,311.58	51,500.00	-41.14
GFA Tramp Class Fees	26,173.74	25,755.00	1.63
GFA/Gymstr Artistic Class Fees	104,035.18	60,265.00	72.63
Active Start Class Fees	45,342.74	36,055.00	25.76
Winter/Spring Camp Revenue	0.00	2,000.00	-100.00
Summer Camp Revenue (W)	35,234.95	25,000.00	40.94
Access Tramp/AG/rental	16,861.82	20,000.00	-15.69
Access School	0.00	1,000.00	-100.00
Access Party	3,124.54	0.00	0.00
<b>SUBTOTAL: WHISTLER FEES</b>	<b>386,188.68</b>	<b>377,985.00</b>	<b>2.17</b>
Pemberton GFA Artistic Class Fees	30,864.36	25,500.00	21.04
Pemberton Active Start Class Fees	22,278.90	18,350.00	21.41
Pemberton Winter/spring Camp Fees	0.00	8,000.00	-100.00
Pemberton Summer Camp Revenue	1,855.00	2,800.00	-33.75
Pemberton IntClb Meet Fees Collect	8,640.00	10,000.00	-13.60
Pemby InClb/Gymstr Class fees	44,714.60	34,665.00	28.99
<b>SUBTOTAL: PEMBERTON FEES</b>	<b>108,352.86</b>	<b>99,315.00</b>	<b>9.10</b>
<b>TOTAL FEES INCOME</b>	<b>502,455.00</b>	<b>492,300.00</b>	<b>2.06</b>
<b>FUNDRAISING/GRANT REVENUE</b>			
Choc Sales (Net)	1,029.79	1,500.00	-31.35
Poinsetta Sales(net)	1,216.85	1,000.00	21.69
Bulbs (net)	0.00	0.00	0.00
Gym Suit/ Merch Sales (net)	0.00	500.00	-100.00
Auction/Raffle - Fall OPS	0.00	2,000.00	-100.00
Volunteer Levy - Whistler	0.00	0.00	0.00
Volunteer Levy - Pemberton	0.00	0.00	0.00
Misc Fundraising	0.00	1,000.00	-100.00
<b>TOTAL FUNDRAISING</b>	<b>2,246.64</b>	<b>6,000.00</b>	<b>-62.56</b>
Federal Payroll Grants	9,153.00	0.00	0.00
Gaming Grant	37,700.00	42,700.00	-11.71
Muni Grants	2,500.00	5,500.00	-54.55
Via Sport Grant	5,000.00	3,500.00	42.86

Grants - other	5,176.00	0.00	0.00
<b>TOTAL GRANTS</b>	59,529.00	51,700.00	15.14
Whistler Meet Revenue	38,224.24	30,000.00	27.41
Less Whistler Meet Expense	-7,696.16	-5,000.00	53.92
FR Fund for Next Year Meet	0.00	0.00	0.00
Net: Whistler Meet Revenue	30,528.08	25,000.00	22.11
Donations (Equipment)	500.00	0.00	0.00
<b>TOTAL FUNDRAISING/GRANT REVENUE</b>	92,803.72	82,700.00	12.22
<b>TOTAL REVENUE</b>	595,258.72	575,000.00	3.52

## EXPENSE

### FACILITY/OFFICE EXPENSE

Gym Rental (net)	58,938.21	60,000.00	-1.77
CECRA/CERS Rent Subsidy	-9,884.52	0.00	0.00
Facility Maint Expense(current)	0.00	0.00	0.00
Facility Maint Reserve Contribution	20,000.00	5,000.00	300.00
Cleaning Expense	392.33	2,000.00	-80.38
COVID Supplies	173.24	0.00	0.00
Small Equipment and Gym Supplies	4,148.73	2,000.00	107.44
Cap Equip Reserve Fund Contribution	20,000.00	5,000.00	300.00
Lge Equip. Purch (not from Reserve)	6,387.49	0.00	0.00
Equipment Repairs/Installation	4,117.64	2,000.00	105.88
Equipment/Liab Insurance	2,593.00	1,800.00	44.06
InfoTechnology	7,345.78	5,500.00	33.56
Office Equipment Expense	1,506.66	1,000.00	50.67
Office Supplies & Misc	666.97	1,000.00	-33.30
Bank Charges (WH and Pemby)	17,575.10	20,000.00	-12.12
Postage/Freight	56.49	100.00	-43.51
Telephone/Internet	1,993.60	2,160.00	-7.70
<b>SUBTOTAL WHISTLER FACILITY EXP</b>	136,010.72	107,560.00	26.45
Pemberton facility rental	27,133.83	18,000.00	50.74
Pemberton Equipment purchase/repair	1,014.40	0.00	0.00
Pemberton Office Supplies	4.47	100.00	-95.53
<b>SUBTOTAL PEMBERTON FACILITY EXP</b>	28,152.70	18,100.00	55.54
<b>TOTAL FACILITY/OFFICE EXPENSE</b>	164,163.42	125,660.00	30.64

### PROGRAM EXPENSE

Advertising & Promotions (W)	455.75	1,500.00	-69.62
CompTravel-Out of Prov Subsidy (ATS)	0.00	1,000.00	-100.00
Meet Entry Fees Expense (W)	18,311.58	16,500.00	10.98
Meet Travel Expense (W)	4,757.41	5,000.00	-4.85
Meet Travel to be Re-all (W)	564.24	0.00	0.00
Uniforms (net)	-85.47	0.00	0.00
Awards/Certificates	0.00	500.00	-100.00
Comp Program Supplies	351.00	500.00	-29.80
GFA Program Supplies	316.41	350.00	-9.60



Active Start Program Supplies	316.41	150.00	110.94
Summer Camp program supplies	0.00	500.00	-100.00
Vollunteer/Coach Appr DNU	0.00	3,000.00	-100.00
CIT Honorariums (W)	1,527.35	2,000.00	-23.63
<b>SUBTOTAL WHISTLER PROGRAM EXP</b>	<b>26,514.68</b>	<b>31,000.00</b>	<b>-14.47</b>
Pemberton Advertising & Promo	0.00	400.00	-100.00
Pemberton Interclub Meet Fees Expen	6,721.20	6,000.00	12.02
Pemberton Meet Travel Expense	0.00	650.00	-100.00
Pemberton Interclub Uniforms (net)	78.46	0.00	0.00
Pemberton Program Supplies	75.42	500.00	-84.92
Pemberton CIT Honorariums	463.11	1,000.00	-53.69
<b>SUBTOTAL PEMBERTON PROGRAM EXP</b>	<b>7,338.19</b>	<b>8,550.00</b>	<b>-14.17</b>
Staff Events/Meetings Expense	2,428.45	500.00	385.69
Coaches Uniforms	0.00	200.00	-100.00
Dues/Subscriptions	132.27	370.00	-64.25
Miscellaneous	184.80	0.00	0.00
<b>TOTAL PROGRAM EXPENSE</b>	<b>36,598.39</b>	<b>40,620.00</b>	<b>-9.90</b>

#### PAYROLL EXPENSE

Coaching Wage	135,961.94	152,000.00	-10.55
Winter/Spring Camp Coaching Wage	0.00	2,000.00	-100.00
Summer Camp Coaching Wage	10,786.37	15,000.00	-28.09
Meet Coaching Wage - Comp	5,836.54	9,000.00	-35.15
Admin/Prog Wage (not incl contract)	137,823.37	143,000.00	-3.62
Guest/Lead/Trainer Coach Wage	0.00	500.00	-100.00
CovidTrain/PD/Meeting Wage	0.00	500.00	-100.00
Added Meet Coaching Wage	0.00	0.00	0.00
Summer Grant Wage	12,480.00	1,500.00	732.00
Summer Coordinator Wage	0.00	0.00	0.00
Cleaning Wage	4,330.75	3,000.00	44.36
<b>SUBTOTAL: WHISTLER WAGES</b>	<b>307,218.97</b>	<b>326,500.00</b>	<b>-5.91</b>
Pemberton Coaching Expense	25,325.62	18,000.00	40.70
Pemberton Camp Coaching	774.20	0.00	0.00
Pemberton Meet coaching	202.73	1,350.00	-84.98
Pemberton Cleaning Wage	0.00	500.00	-100.00
<b>SUBTOTAL: PEMBERTON WAGES</b>	<b>26,302.55</b>	<b>19,850.00</b>	<b>32.51</b>
EI Expense.	7,194.80	7,308.00	-1.55
CPP Expense	14,849.62	15,066.00	-1.44
WCB Expense	4,380.12	5,888.00	-25.61
<b>TOTAL PAYROLL BURDEN</b>	<b>26,424.54</b>	<b>28,262.00</b>	<b>-6.50</b>
Coaching (contract)	0.00	0.00	0.00
bookeeping (Whistler)	6,000.00	6,300.00	-4.76
<b>SUBTOTAL: WHISTLER CONTRACTORS</b>	<b>6,000.00</b>	<b>6,300.00</b>	<b>-4.76</b>
Pemberton Bookeeping	2,499.96	2,625.00	-4.76
Pemberton Contract Coaching	0.00	0.00	0.00
<b>SUBTOTAL: PEMBERTON CONTRACTORS</b>	<b>2,499.96</b>	<b>2,625.00</b>	<b>-4.76</b>
Proff Development/Travel	6,508.65	4,000.00	62.72

Employee Benefits	8,612.02	8,000.00	7.65
CEWS Canadian Emerg Wage Subsidy	<u>-28,374.25</u>	<u>0.00</u>	0.00
<b>TOTAL PAYROLL EXPENSE</b>	<u>355,192.44</u>	<u>395,537.00</u>	-10.20
<b>OTHER EXPENSES</b>			
Amortization Expense	0.00	13,695.00	-100.00
Suspense	<u>-2,080.00</u>	<u>0.00</u>	0.00
<b>TOTAL OTHER EXPENSE</b>	<u>-2,080.00</u>	<u>13,695.00</u>	-115.19
<b>TOTAL EXPENSE</b>	<u>553,874.25</u>	<u>575,512.00</u>	-3.76
<b>NET INCOME</b>	<u>41,384.47</u>	<u>-512.00</u>	-
			8,182.90

## Balance Sheet 2021 - 2022

### Whistler Gymnastics Club

Balance Sheet As at June 15, 2022	
<b>ASSETS</b>	
<b>Current Assets</b>	
Cheques to be deposited	0.00
Cash to be deposited	0.00
Visa/MC desk to be Deposited	0.00
Payroll EFT	0.00
Over/Short	0.00
Online over/short	0.00
Gaming Account 23,424.25	67.99
Visa/MC online to be deposited	-2,297.00
Online Dep future months	0.00
Facility Maint Reserve Acct	34,078.20
Capital Eqpmt Reserve Acct	24,733.00
Blueshore General Account	315,474.02
<b>Total Cash</b>	<b>372,056.21</b>
Accounts Receivable	0.00
Payroll Advances	0.00
<b>Total Receivable</b>	<b>0.00</b>
Athletes Travel Fund	0.00
Collabria Mastercard Payble	-976.03
CERS Subsidy Receivable	0.00
<b>Total Current Assets</b>	<b>371,080.18</b>
<b>Capital Assets</b>	
Leasehold Improvements	15,197.31
Office Furniture & Equipment	4,308.95
Audio Visual Equipment	13,194.95
Gym Equipment	270,100.23
Accum. Amort. -Furn. & Equip.	-136,950.00
Net - Furniture & Equipment	150,654.13
<b>Total Capital Assets</b>	<b>165,851.44</b>
<b>TOTAL ASSET</b>	<b>536,931.62</b>
<b>LIABILITY</b>	
<b>Current Liabilities</b>	
Accounts Payable	26,831.57
Stored Credits Uplifter	216.00
Staff Expenses from paychecks	0.00

Prepayments for next season received	0.00	
Prepmts for Whistler Summer Camps	28,306.77	
Prepyaments - Pemby Summer Camps	2,758.00	
Prepayments - GFA	0.00	
Prepayments - Tramp	0.00	
Prepayments - Pemberton	0.00	
Coaching Wages Payable	0.00	
Prepayments - Access	0.00	
Prepayments FR for Meet 2020	0.00	
<b>Total Prepayments Received</b>		<b>31,064.77</b>
Vacation payable	9,938.35	
EI Payable	498.21	
CPP Payable	1,251.44	
Federal Income Tax Payable	1,344.26	
Total Receiver General		3,093.91
WCB Payable	0.00	
CEBA Loan	60,000.00	
<b>Total Current liabilities</b>		<b>131,144.60</b>
<b>TOTAL LIABILITY</b>		<b>131,144.60</b>
<b>EQUITY</b>		
Capital Funds		
Capital Equipt Reserve Fund	35,913.00	
Facility Maint Reserve Fund	34,071.14	
<b>Total Share Capital</b>		<b>69,984.14</b>
Retained Earnings		
Retained Earnings - Previous Years	292,737.38	
Current Earnings	43,065.47	
<b>Total Retained Earnings</b>		<b>335,802.85</b>
<b>TOTAL EQUITY</b>		<b>405,786.99</b>
<b>LIABILITIES AND EQUITY</b>		<b>536,931.59</b>



**Whistler Gymnastics Club**
**FY 22-23 DRAFT Budget**

	Proposed Budget 2022-2023	
REVENUE		
FEES INCOME		
GBC Insurance/Admin Rev (Net)		12,500.00
Comp & IC Meet Fees Rev (TG & AG)	26,500.00	
Comp Tramp Class Fees	50,000.00	
Comp Artisitc Class Fees	60,000.00	
Interclub Class Fees	50,000.00	
GFA Tramp Class Fees	25,000.00	
GFA/Gymstr Artistic Class Fees	105,000.00	
Active Start Class Fees	45,000.00	
Winter/Spring Camp Revenue	2,000.00	
Summer Camp Revenue (W)	35,000.00	
Access Tramp/AG/rental	15,000.00	
Access School	0.00	
Access Party	0.00	
SUBTOTAL: WHISTLER FEES		413,500.00
Pemberton GFA Artistic Class Fees	35,000.00	
Pemberton Active Start Class Fees	22,000.00	
Pemberton Winter/spring Camp Fees	0.00	
Pemberton Summer Camp Revenue	2,500.00	
Pemberton IntClb Meet Fees Collect	9,000.00	
Pemby InClb/Gymstr Class fees	36,000.00	
SUBTOTAL: PEMBERTON FEES		104,500.00
TOTAL FEES INCOME		530,500.00
FUNDRAISING/GRANT REVENUE		
Choc Sales (Net)	800.00	
Poinsetta Sales(net)	1,000.00	
Bulbs (net)	0.00	
Gym Suit/ Merch Sales (net)	500.00	
Auction/Raffle - Fall OPS	0.00	
Volunteer Levy - Whistler	0.00	
Vollunteer Levy - Pemberton	0.00	
Misc Fundraising	0.00	
TOTAL FUNDRAISING		2,300.00
Federal Payroll Grants	0.00	
Gaming Grant	37,700.00	
Muni Grants	2,500.00	

Via Sport Grant	0.00	
Grants - other	12,000.00	
<b>TOTAL GRANTS</b>		<b>52,200.00</b>
Whistler Meet Revenue	35,735.00	
Less Whistler Meet Expense	-17,000.00	
FR Fund for Next Year Meet	0.00	
Net: Whistler Meet Revenue		<b>18,735.00</b>
Donations (Equipment)		0.00
<b>TOTAL FUNDRAISING/GRANT REVENUE</b>		<b>73,235.00</b>
<b>TOTAL REVENUE</b>		<b>603,735.00</b>
<b>EXPENSE</b>		
<b>FACILITY/OFFICE EXPENSE</b>		
Gym Rental (net)	61,000.00	
CECRA/CERS Rent Subsidy	0.00	
Facility Maint Expense(current)	0.00	
Facility Maint Reserve Contribution	5,000.00	
Cleaning Expense	1,500.00	
COVID Supplies	0.00	
Small Equipment and Gym Supplies	3,000.00	
Cap Equip Reserve Fund Contribution	10,000.00	
Lge Equip. Purch (not from Reserve)	0.00	
Equipment Repairs/Installation	2,000.00	
Equipment/Liab Insurance	3,000.00	
InfoTechnology	5,500.00	
Office Equipment Expense	1,200.00	
Office Supplies & Misc	750.00	
Bank Charges (WH and Pemby)	18,037.00	
Postage/Freight	100.00	
Telephone/Internet	2,000.00	
<b>SUBTOTAL WHISTLER FACILITY EXP</b>		<b>113,087.00</b>
Pemberton facility rental	25,000.00	
Pemberton Equipment purchase/repair	2,000.00	
Pemberton Office Supplies	50.00	
<b>SUBTOTAL PEMBERTON FACILITY EXP</b>		<b>27,050.00</b>
<b>TOTAL FACILITY/OFFICE EXPENSE</b>		<b>140,137.00</b>
<b>PROGRAM EXPENSE</b>		
Advertising & Promotions (W)	1,000.00	
CompTravel-Out of Prov Subsdy (ATS)	1,000.00	
Meet Entry Fees Expense (W)	18,000.00	
Meet Travel Expense (W)	7,000.00	
Meet Travel to be Re-all (W)	0.00	
Uniforms (net)	0.00	
Awards/Certificates	500.00	
Comp Program Supplies	300.00	

GFA Program Supplies	400.00	
Active Start Program Supplies	300.00	
Summer Camp program supplies	500.00	
Vollunteer/Coach Appreciation (W)	0.00	
CIT Honorariums (W)	2,000.00	
<b>SUBTOTAL WHISTLER PROGRAM EXP</b>		<b>31,000.00</b>
Pemberton Advertising & Promo	250.00	
Pemberton Interclub Meet Fees Expen	7,000.00	
Pemberton Meet Travel Expense	1,000.00	
Pemberton Interclub Uniforms (net)	0.00	
Pemberton Program Supplies	500.00	
Pemberton CIT Honorariums	1,500.00	
<b>SUBTOTAL PEMBERTON PROGRAM EXP</b>		<b>10,250.00</b>
<b>STAFF EVENTS</b>		<b>3,000.00</b>
Coaches Uniforms	800.00	
Dues/Subscriptions	370.00	
Miscellaneous	200.00	
<b>TOTAL PROGRAM EXPENSE</b>		<b>45,620.00</b>
<b>PAYROLL EXPENSE</b>		
Coaching Wage	147,000.00	
Winter/Spring Camp Coaching Wage	2,000.00	
Summer Camp Coaching Wage	15,000.00	
Meet Coaching Wage - Comp	8,000.00	
Admin/Prog Wage (not incl contract)	140,000.00	
Guest/Lead/Trainer Coach Wage	750.00	
CovidTrain/PD/Meeting Wage	4,000.00	
Added Meet Coaching Wage	0.00	
Summer Grant Wage	14,600.00	
Summer Coordinator Wage	0.00	
Cleaning Wage	4,000.00	
<b>SUBTOTAL: WHISTLER WAGES</b>		<b>335,350.00</b>
Pemberton Coaching Expense	26,500.00	
Pemberton Camp Coaching	1,200.00	
Pemberton Meet coaching	1,350.00	
Pemberton Cleaning Wage	1,000.00	
<b>SUBTOTAL: PEMBERTON WAGES</b>		<b>30,050.00</b>
EI Expense.	8,082.65	
CPP Expense	20,827.80	
WCB Expense	5,663.70	
<b>TOTAL PAYROLL BURDEN</b>		<b>34,574.15</b>
Coaching (contract)	0.00	
bookeeping (Whistler)	6,500.00	
<b>SUBTOTAL: WHISTLER CONTRACTORS</b>		<b>6,500.00</b>
Pemberton Bookeeping	2,500.00	
Pemberton Contract Coaching	0.00	
<b>SUBTOTAL: PEMBERTON CONTRACTORS</b>		<b>2,500.00</b>

Proff Development/Travel	5,000.00
Employee Benefits	7,000.00
CEWS Canadian Emerg Wage Subsidy	0.00
<b>TOTAL PAYROLL EXPENSE</b>	<b>420,974.15</b>
<b>OTHER EXPENSES</b>	
Amortization	
Suspense	0.00
<b>TOTAL OTHER EXPENSE</b>	<b>0.00</b>
<b>TOTAL EXPENSE</b>	<b>606,731.15</b>
<b>NET INCOME</b>	<b>-2,996.15</b>



## PRESIDENT'S REPORT BY TAMI MITCHELL

Two AGM's in one season is something new, but it's exciting to say that it feels like operations are back to what we are use to.

Whistler gymnastics is so lucky to have a great group of talented coaches who also manage the clubs operations with professionalism and passion.

Catou and her team; Steve, Karin, Lucy and Cathy have shown their creativity, dedication and innovation to keep gymnastics classes and training running and athletes progressing in a fun and safe environment.

Since last AGM in October the board, with 4 new members have worked hard to set the path for the next 4 years by working with Caroline Bagnall, connect hospitality strategies, on the 2022- -26 Strategic plan.

Caroline helped our team gather important information from our members, staff and athletes to ensure the plan is imbedded in everyday operations.

### BOD Highlights:

- Recruited 4 new board members
- Built a new strategic plan 2022 - 2026
- Tackled CIT honorariums vs employment
- Reviewed and renewed lease agreement
- Policy and Procedure committee completed Risk Management, Safety First, coach professionally and policies and created an Athlete Protection Policy.
- Successful Whistler Summer Classic fundraiser

Reflection on the board of director's goals for the past season.

- **Improved communication throughout the organization and community**
- **Ensure Program and Business excellence**
- **Maintain financial sustainability and program affordability.**
- **Guide and direct grant applications and fundraising efforts.**
- **Maintain strong community relationships.**
- **Encourage the growth and involvement of our volunteer base.**

### THANK-YOU'S

It's time we say goodbye to 2 board members.

Dan Wallman- thank you for your years of advice on best practices and keeping the club consistent with safe sport principles and healthy gym environment. Your deep discussions and shared resources really helped shape the club and ensure it's practicing fairly and efficiently.

Thank you Nadia Demers for all the endless hours spent on delivering financial reports and the re design of the financial statements at monthly meetings to make sure the club is on track at all time. Your budgeting skills and number crunching not only kept the club running through the pandemic it gave the club a strong financial base coming out of COVID which helped us keep our staff and coaches employed.

Thank you All

## OPERATIONAL REPORT BY CATOU TYLER, CLUB MANAGER

JUNE 27<sup>TH</sup>, 2022

Overall, the 2021-2022 Year has been a very successful. From the start of the year with masks on to almost back to normal! Covid 19 regulations became less strict throughout the year, working towards near normal gym times. Less closures and increase in Recreational numbers. Staffing the larger numbers has become an issue.

Highlights include:

- *Steve Shore continues to improve our efficiency with administration, online file management and updating our software systems.*
- *The 2021-2022 year had a total of 746 members.*
- *Summer session of 2021 for GFA camps lead by Lucy Stevens (summer camp coordinator). We held 9 weeks of camps with 141 participants. Competitive programs also offered regular training. We received to Summer youth employment grants for Lucy Stevens and Kristy Johnson.*
- *There was an increased numbers in the Active start and GFA classes in Whistler and in Pemberton. Please see the registration comparison chart .*
- *WAG competitive team still had a decrease in pre-covid numbers of 30%.*
- *Meets attended by WAG:*
  - Feb -Christy Fraser Memorial Invitational -*
  - Apr - \*Provincial Championships (for JO 7 and select JO 6)-Avery Lang winning silver on beam.*
  - Apr -Aviva Cup – Interclub and dev*
  - Apr - May 1- Delta Invitational -Interclub and comp*
  - June -Ogopogo Invitational*
  - June - Whistler Summer Classic*
- *Meets attended by TG:*
  - Feb Aaron Johnson Invitational*
  - Mar Shasta invitational*
  - Apr BC Championships*
  - May Westerns*
  - May Alberta Championships*
  - Nationals July with Max Oughtred and Sofia Wright qualifying.*
- *Meets attended by Pemberton Interclub:*
  - Mar Bowen Island*
  - Jun BC Gymnaestrada Comox*
  - Jun Whistler Summer Classic*
- *Trampoline competitive group is close to their pre-covid numbers and had an increase in their development pre-comp group new this year.*
- *Pre Coach-it-training course in November, Artistic foundations course in October, Trampoline foundations course in May.*
- *Steve Shore has taken his training to become a Foundations Trampoline Learning Facilitator (course conductor).*
- *GFA and AS had their annual ribbon day to show off skills to parents in Whistler and Pemberton*
- *Hosted the Gymnastics BC Trampoline Retreat and Training camp October 2021 and in May 2022.*

- *Hiring for summer and fall is currently underway. Three youth employment grants were awarded to us this year.*
- *I was a member of the GBC Gymnastics For All committee*
- *Pemberton Interclub group is attending Canadian Gymnaestrada July 1-4, 2022 for the first time.*
- *Sheila, Tami and myself have been working on Policy and Procedures*
- *A Special thanks to Tami Mitchell and Sheila Mozes for all the hard volunteer work to support the operations of the Club.*

### **Competitive Athlete Highlighted results:**

- *Sofia Wright (tramp) and Max Oughtred (DMT) mobilised to Level 5 national level to qualify for Elite Canada*

#### **BC trampoline Championships:**

- *Sofia Wright 2<sup>nd</sup> on DMT, 2 on Tramp Level 4*
- *Max Oughtred 2<sup>nd</sup> on DMT Level 4*
- *Maxine Charron 2<sup>nd</sup> on tramp Level 1*

#### **Trampoline Westerns**

- *Cade Corey 3<sup>rd</sup> on tumbling Level 1*

#### **WAG BC Championships:**

- *Avery Lang 3<sup>rd</sup> on Beam (level 6)*

#### **WAG Ogopogo Invitational:**

- *Sienna Osborn 3<sup>rd</sup> on Vault (level 6)*

## **RECOGNITION 2022**

### **BOD/VOLUNTEERS/EXECUTIVE COMMITTEE'S**

President – Tami Mitchel

Vice-President – Susie Douglas

Secretary – Susie Douglas

Treasurer– Natalie Percivil, Past Treasurer Nadia Demers

Members-at-Large- Dan Wallman, Wendy Miron, Ryan Oughtred, Sally Whitehead

<b>HR</b>	<b>Budget &amp; Finance</b>	<b>Policy &amp; Procedure</b>	<b>Health &amp; Safety Committee</b>
Tami Mitchell	Nadia Demers	Sheila Mozes	Susie Douglas
Susie Douglas	Natalie Percivil	Tami Mitchell	Dan Wallman
Catou Tyler	Catou Tyler	Catou Tyler	Catou Tyler
	Claire Thornwaite	Susie Douglas	Sheila Mozes

<b>Comms/Promotions</b>	<b>Strategic Planning</b>	<b>Fundraising</b>	<b>Volunteer Recruitment</b>
Catou Tyler	All Board of Directors	Tami Mitchell	Tami Mitchell
Susie Douglas			

### **Sponsorship and Donations**

Ryan Oughtred, Wendy Miron, Natalie Percivil, Susie Douglas, Catou Tyler

### **MANAGEMENT TEAM**

Catou Tyler	Club Manager
Steve Shore	Administration Coordinator
Karin Jarratt	Head Coach Oros Competitive Artistic Gymnastics
Tanya Liquorish (Sept. – Dec.)	Head Coach Oros Trampoline Gymnastics
Leeann Irving (Sept. – April)	Head Coach Oros Gymnastics for All
Cathy Bennis	Interclub Coordinator Pemberton
Kristy Johnson (Sept. – May)	Pemberton Program Coordinator
Claire Thornwaite	Financial Administrator

### **COACHING STAFF**

Catou Tyler, Steve Shore, Karin Jarratt, Tanya Liquorish, Adria Pitawanakwat, Cathy Bennis, Lindsey Corey, Kristy Johnson, Lucy Smith, Tilly Mealiff, Clare O'dea, Meaghan Smith, Tami Mitchell.

**Coaches in Training:** Kayna Frame, Rebecca

**Pre Coaches in Training:** Elly Mitchell, Sofia Wright, Kirra Douglas

### **EMPLOYEE SERVICE AWARDS - 5,10,15,20,25,30,35,40 YRS**

Previous recipients include:

Karin Jarratt- 30 years

Catou Tyler, Tami Mitchell, Cathy Bennis- 20 years

**SHEILA MOZES AWARD - FOR THE LOVE OF GYMNASTICS**

**HODIE AWARD - FOR THE GIFT OF TIME**