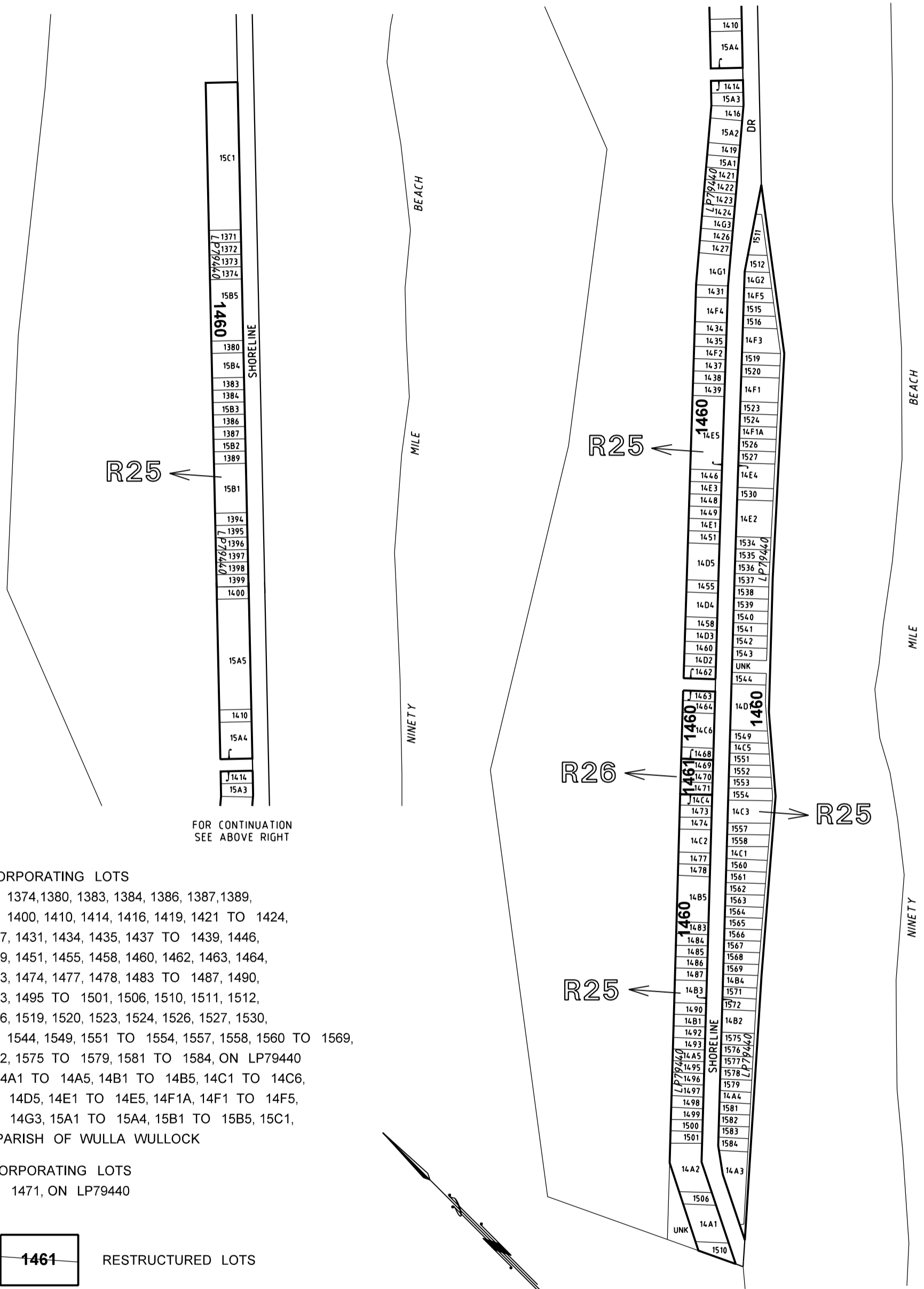


FOR CONTINUATION  
SEE BELOW LEFT



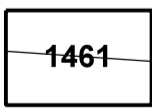
FOR CONTINUATION  
SEE ABOVE RIGHT

**R25 INCORPORATING LOTS**

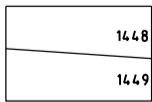
1371 TO 1374, 1380, 1383, 1384, 1386, 1387, 1389,  
1394 TO 1400, 1410, 1414, 1416, 1419, 1421 TO 1424,  
1426, 1427, 1431, 1434, 1435, 1437 TO 1439, 1446,  
1448, 1449, 1451, 1455, 1458, 1460, 1462, 1463, 1464,  
1468, 1473, 1474, 1477, 1478, 1483 TO 1487, 1490,  
1492, 1493, 1495 TO 1501, 1506, 1510, 1511, 1512,  
1515, 1516, 1519, 1520, 1523, 1524, 1526, 1527, 1530,  
1534 TO 1544, 1549, 1551 TO 1554, 1557, 1558, 1560 TO 1569,  
1571, 1572, 1575 TO 1579, 1581 TO 1584, ON LP79440  
& CA's 14A1 TO 14A5, 14B1 TO 14B5, 14C1 TO 14C6,  
14D1 TO 14D5, 14E1 TO 14E5, 14F1A, 14F1 TO 14F5,  
14G1 TO 14G3, 15A1 TO 15A4, 15B1 TO 15B5, 15C1,  
SEC C, PARISH OF WULLA WULLOCK

**R26 INCORPORATING LOTS**

1469 TO 1471, ON LP79440

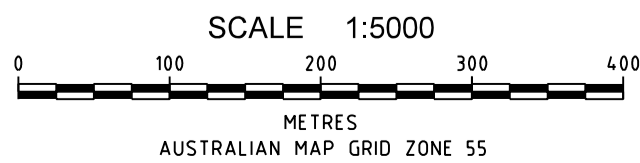


RESTRICTURED LOTS



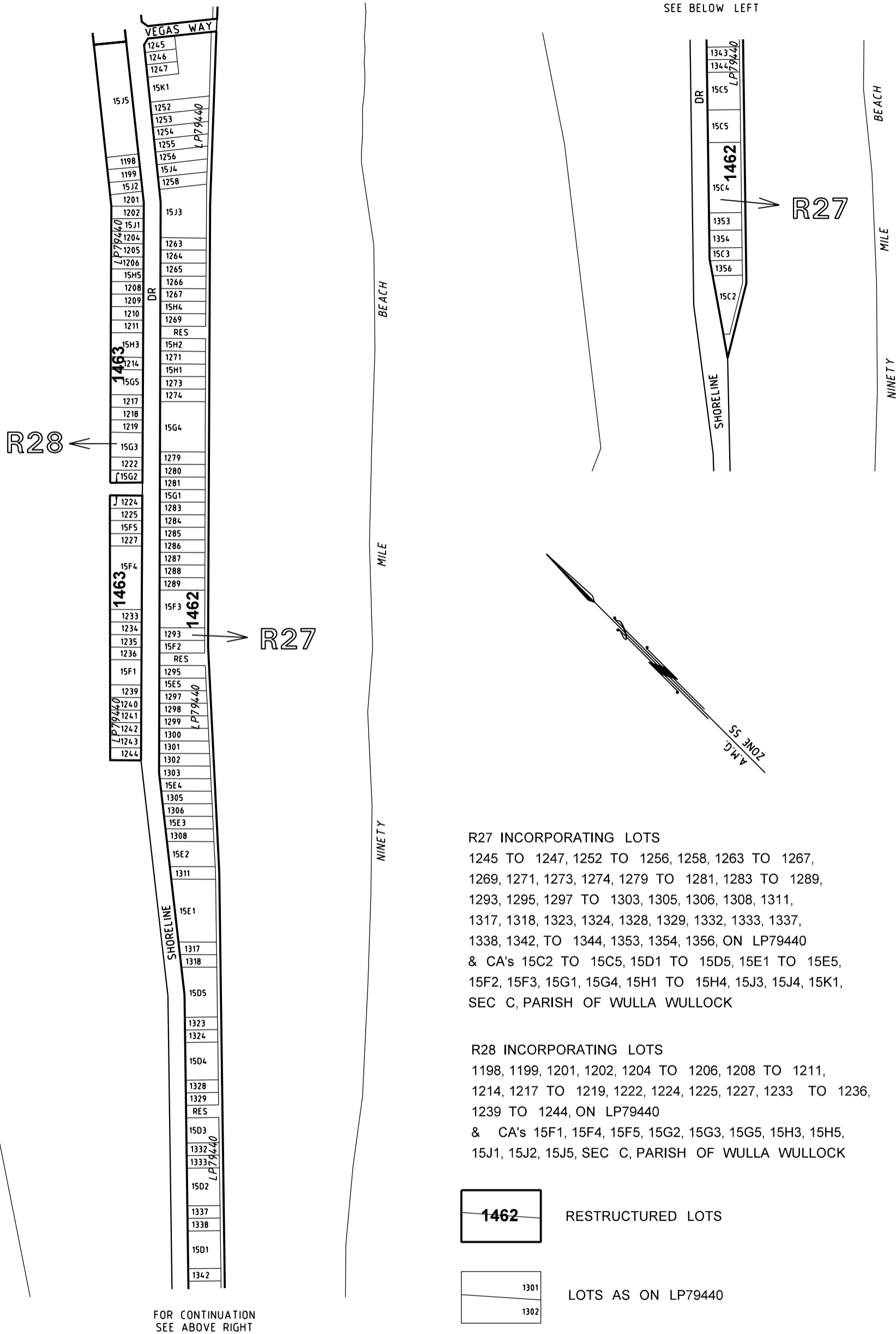
LOTS AS ON LP79440

# WELLINGTON PLANNING SCHEME - LOCAL PROVISION



**NINETY MILE BEACH  
RESTRUCTURE PLAN  
STAGE R25 & R26**

FOR CONTINUATION  
SEE BELOW LEFT

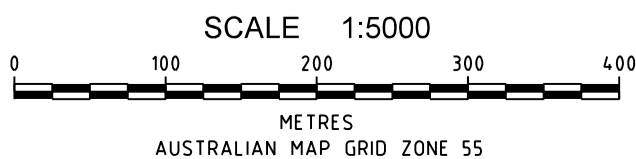


- R27 INCORPORATING LOTS**  
 1245 TO 1247, 1252 TO 1256, 1258, 1263 TO 1267,  
 1269, 1271, 1273, 1274, 1279 TO 1281, 1283 TO 1289,  
 1293, 1295, 1297 TO 1303, 1305, 1306, 1308, 1311,  
 1317, 1318, 1323, 1324, 1328, 1329, 1332, 1333, 1337,  
 1338, 1342, TO 1344, 1353, 1354, 1356, ON LP79440  
 & CA's 15C2 TO 15C5, 15D1 TO 15D5, 15E1 TO 15E5,  
 15F2, 15F3, 15G1, 15G4, 15H1 TO 15H4, 15J3, 15J4, 15K1,  
 SEC C, PARISH OF WULLA WULLOCK
- R28 INCORPORATING LOTS**  
 1198, 1199, 1201, 1202, 1204 TO 1206, 1208 TO 1211,  
 1214, 1217 TO 1219, 1222, 1224, 1225, 1227, 1233 TO 1236,  
 1239 TO 1244, ON LP79440  
 & CA's 15F1, 15F4, 15F5, 15G2, 15G3, 15G5, 15H3, 15H5,  
 15J1, 15J2, 15J5, SEC C, PARISH OF WULLA WULLOCK

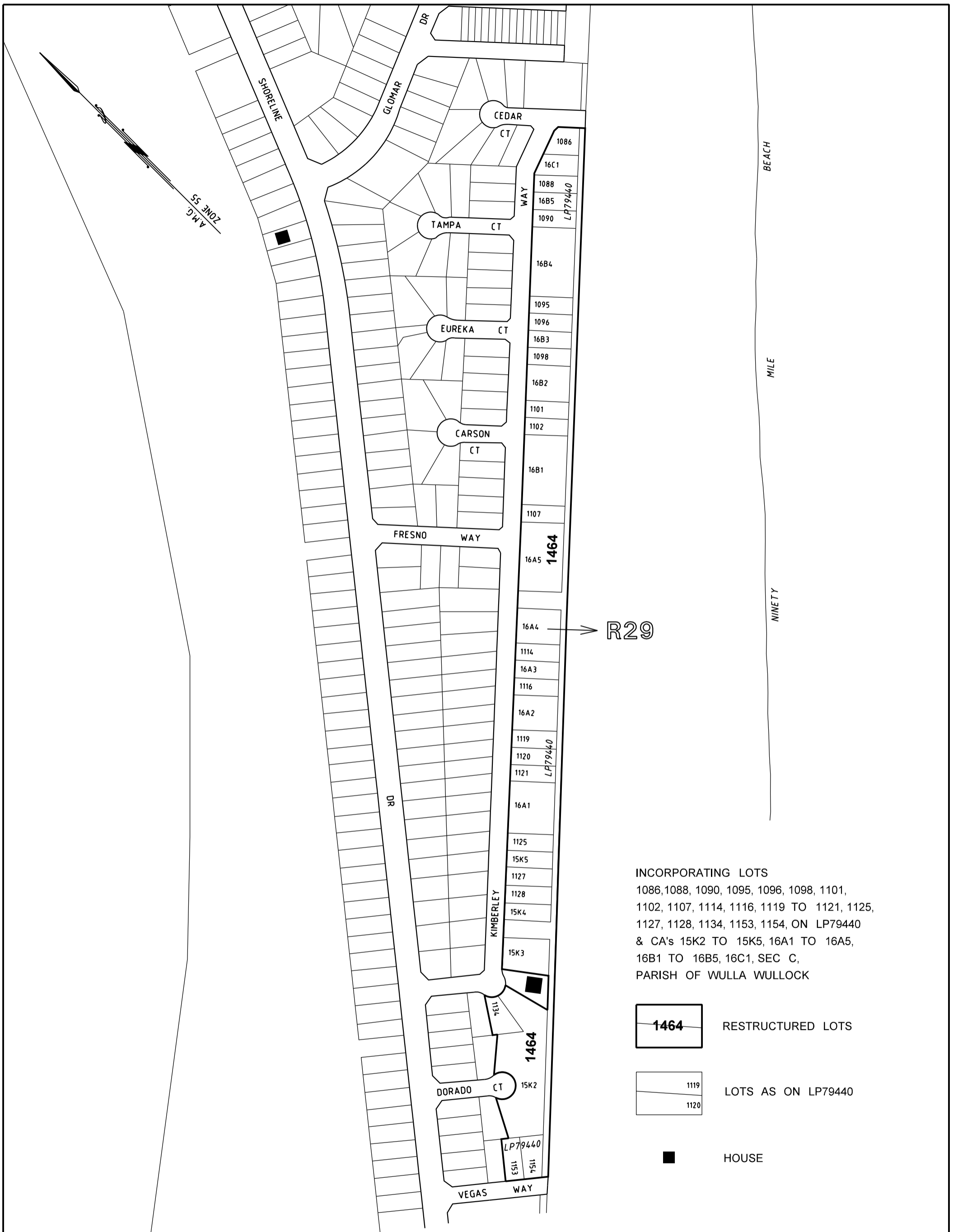
- 1462      RESTRICTED LOTS
- 1301  
1302      LOTS AS ON LP79440

FOR CONTINUATION  
SEE ABOVE RIGHT

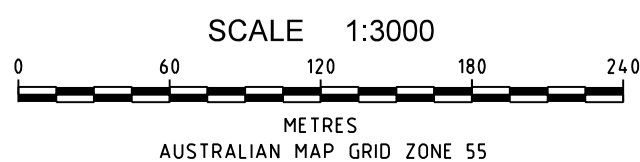
# WELLINGTON PLANNING SCHEME - LOCAL PROVISION



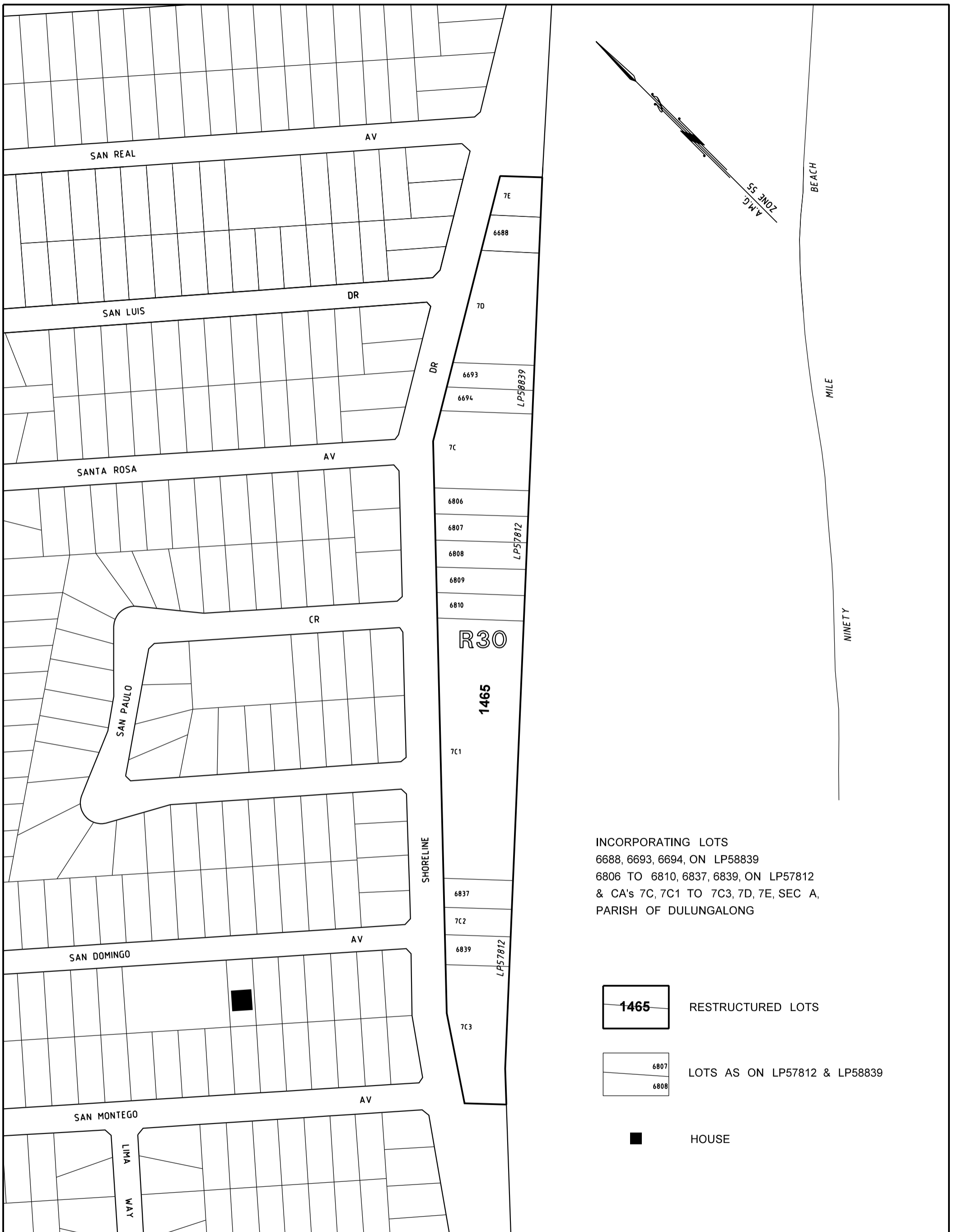
**NINETY MILE BEACH  
 RESTRUCTURE PLAN  
 STAGE R27 & R28**



# WELLINGTON PLANNING SCHEME - LOCAL PROVISION



**NINETY MILE BEACH  
 RESTRUCTURE PLAN  
 STAGE R29**



INCORPORATING LOTS  
 6688, 6693, 6694, ON LP58839  
 6806 TO 6810, 6837, 6839, ON LP57812  
 & CA's 7C, 7C1 TO 7C3, 7D, 7E, SEC A,  
 PARISH OF DULUNGALONG

- 1465 RESTRICTED LOTS
- 6807  
6808 LOTS AS ON LP57812 & LP58839
- HOUSE

# WELLINGTON PLANNING SCHEME - LOCAL PROVISION

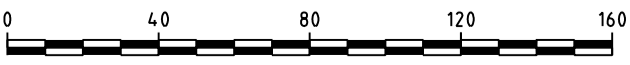


**Fisher Stewart**  
 ENGINEERS - SURVEYORS - TOWN PLANNERS  
 ENVIRONMENTAL CONSULTANTS



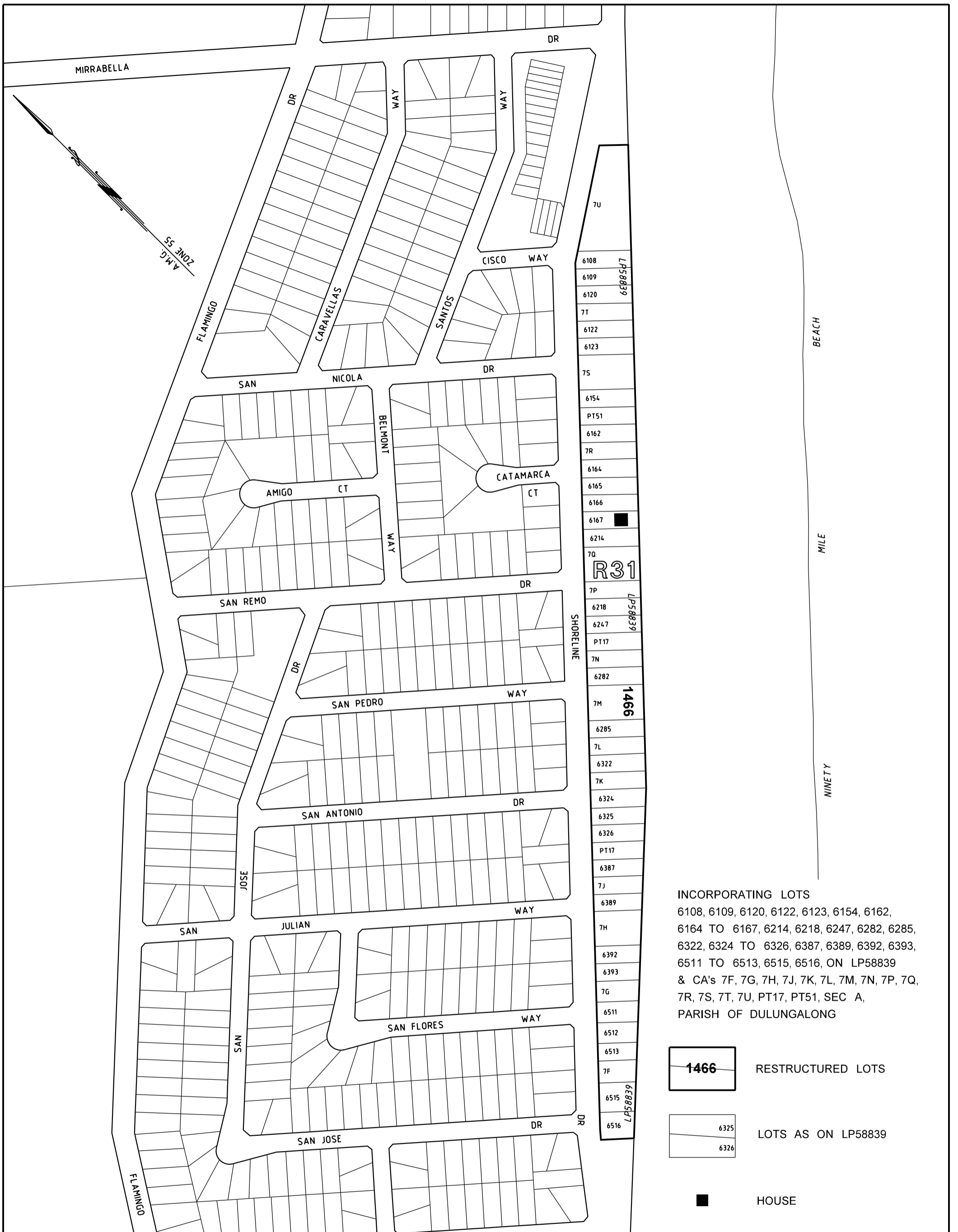
**WELLINGTON**  
 SHIRE COUNCIL  
*Prosperity from Diversity*

SCALE 1:2000



METRES  
 AUSTRALIAN MAP GRID ZONE 55

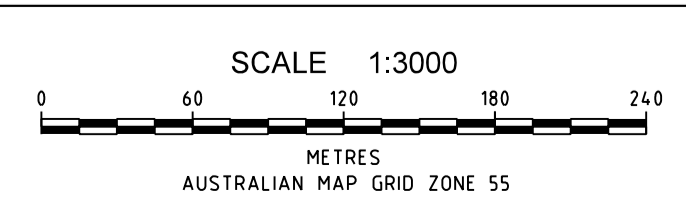
**NINETY MILE BEACH**  
**RESTRUCTURE PLAN**  
**STAGE R30**



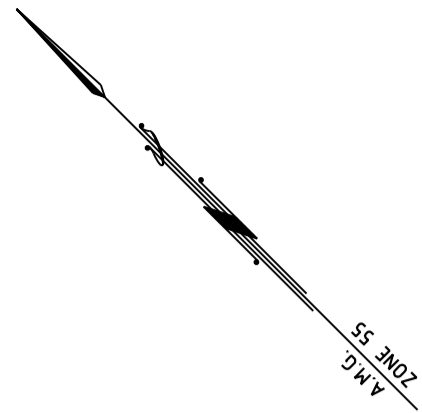
INCORPORATING LOTS  
 6108, 6109, 6120, 6122, 6123, 6154, 6162,  
 6164 TO 6167, 6214, 6218, 6247, 6282, 6285,  
 6322, 6324 TO 6326, 6387, 6389, 6392, 6393,  
 6511 TO 6513, 6515, 6516, ON LP58839  
 & CA's 7F, 7G, 7H, 7J, 7K, 7L, 7M, 7N, 7P, 7Q,  
 7R, 7S, 7T, 7U, PT17, PT51, SEC A,  
 PARISH OF DULUNGALONG

- 1466 RESTRICTURED LOTS
- 6325 LOTS AS ON LP58839
- 6326 LOTS AS ON LP58839
- HOUSE

# WELLINGTON PLANNING SCHEME - LOCAL PROVISION

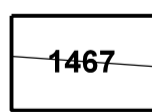


**NINETY MILE BEACH  
 RESTRUCTURE PLAN  
 STAGE R31**



NINETY MILE BEACH

INCORPORATING LOTS  
 4509, 4510, 4512, 4518, 4545, ON LP58836  
 4676, 4677, ON LP58838  
 & CA's 7V, 7W, 7X, 7Y, 7Z, SEC A,  
 PARISH OF DULUNGALONG

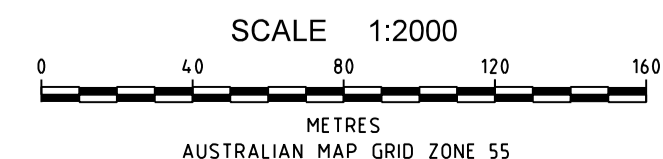


RESTRUCTURED LOTS



LOTS AS ON LP58836 AND LP58838

# WELLINGTON PLANNING SCHEME - LOCAL PROVISION



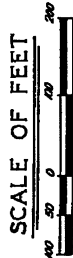
NINETY MILE BEACH  
 RESTRUCTURE PLAN  
 STAGE R32

8 SHEETS  
 SHEET 1  
 LP 82059  
 EDITION 4

PLAN OF SUBDIVISION  
 CROWN ALLOTMENTS 9D & 9E &  
 PART OF CROWN ALLOTMENT 10 SECTION C

PARISH OF WULLA WULLOCK

COUNTY OF BULN BULN



VOL. 5109 FOL. 740  
 5109 742

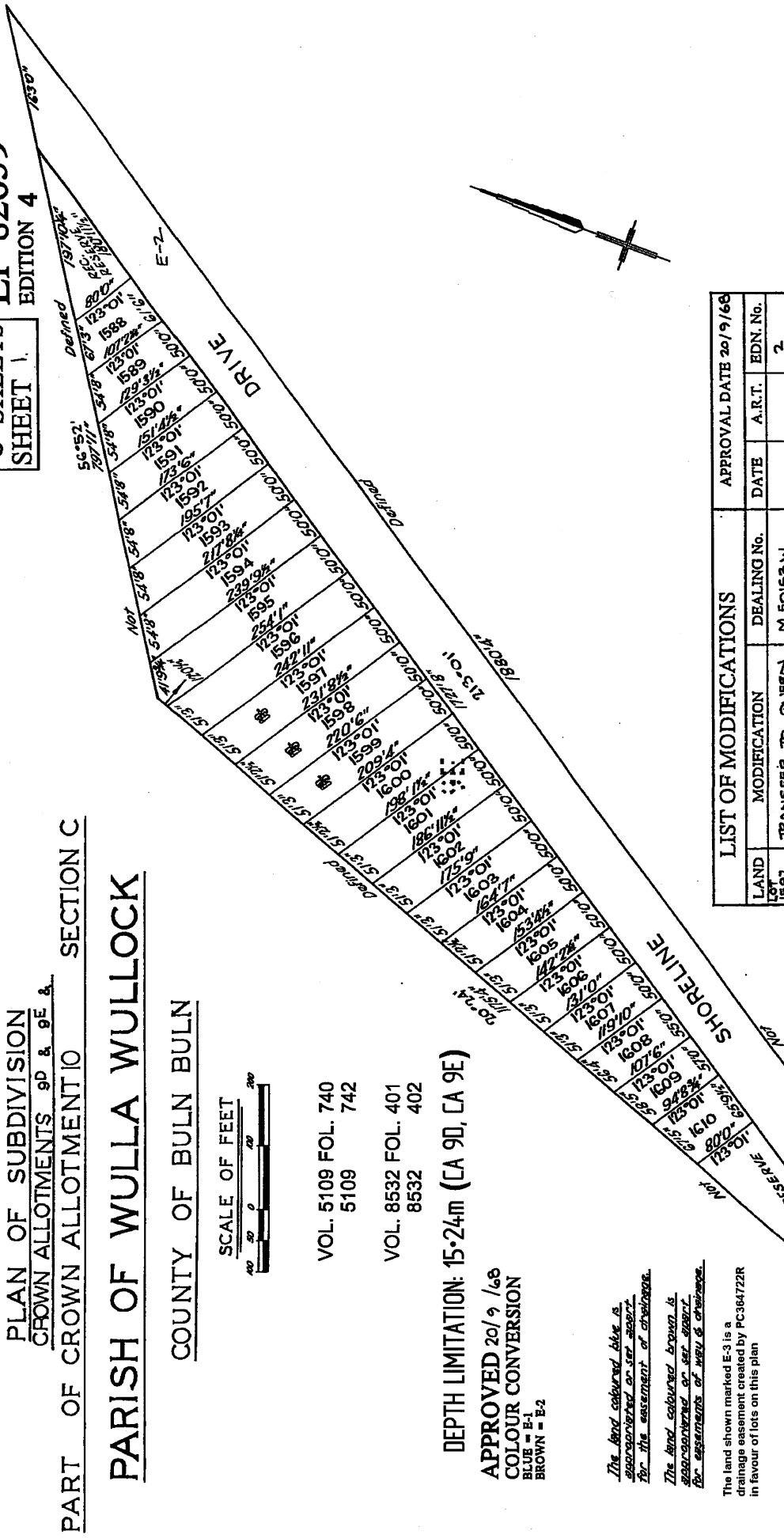
VOL. 8532 FOL. 401  
 8532 402

DEPTH LIMITATION: 15.24m (CA 9D, CA 9E)

APPROVED 20/9/68  
 COLOUR CONVERSION  
 BLUE = E-1  
 BROWN = E-2

*The land coloured blue is appropriated or set apart for the easement of drainage.*  
*The land coloured brown is appropriated or set apart for easements of way & drainage.*

The land shown marked E-3 is a drainage easement created by PC364722R in favour of lots on this plan



LIST OF MODIFICATIONS				APPROVAL DATE 20/9/68	
LAND LOT	MODIFICATION	DEALING No.	DATE	A.R.T.	EDN. No.
1597	TRANSFER TO QUEEN	M 50153W			2
1598	TRANSFER TO QUEEN	M 112035N			2
1599	TRANSFER TO QUEEN	M 112035N			2
1600	CONSOLIDATION	P.C.35694-6			3
LOT 75	CREATION OF EASEMENT	PC364722R	27/3/2003	PTL	4

WARNING: THE IMAGE OF THIS PLAN/DOCUMENT HAS BEEN DIGITALLY AMENDED. NO FURTHER AMENDMENTS ARE TO BE MADE TO THE ORIGINAL PLAN/DOCUMENT.

SEE SHEET 2