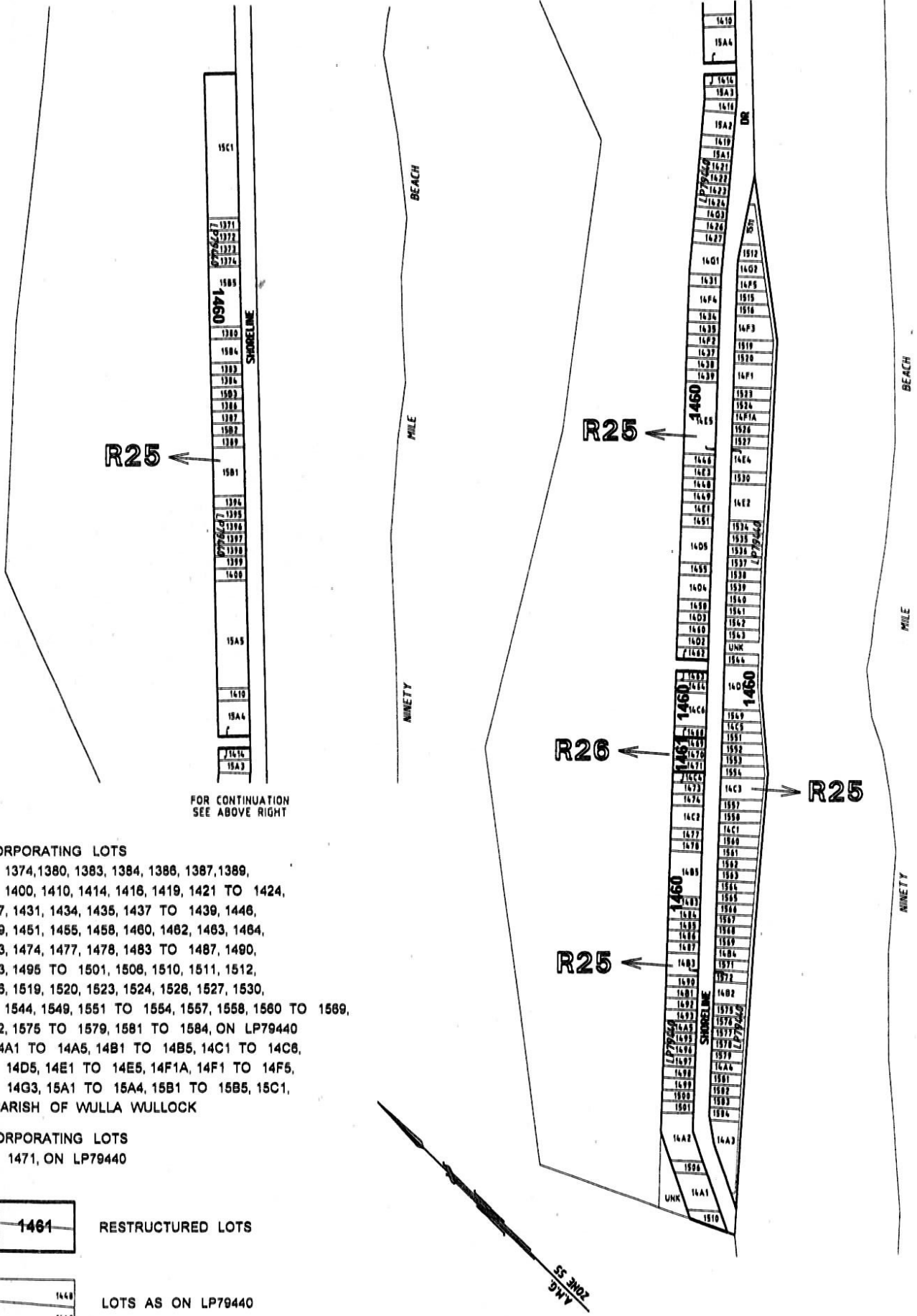


FOR CONTINUATION  
SEE BELOW LEFT



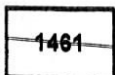
FOR CONTINUATION  
SEE ABOVE RIGHT

**R25 INCORPORATING LOTS**

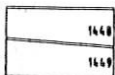
- 1371 TO 1374, 1380, 1383, 1384, 1386, 1387, 1389,
- 1394 TO 1400, 1410, 1414, 1416, 1419, 1421 TO 1424,
- 1426, 1427, 1431, 1434, 1435, 1437 TO 1439, 1446,
- 1448, 1449, 1451, 1455, 1458, 1460, 1462, 1463, 1464,
- 1468, 1473, 1474, 1477, 1478, 1483 TO 1487, 1490,
- 1492, 1493, 1495 TO 1501, 1508, 1510, 1511, 1512,
- 1515, 1516, 1519, 1520, 1523, 1524, 1526, 1527, 1530,
- 1534 TO 1544, 1549, 1551 TO 1554, 1557, 1558, 1560 TO 1569,
- 1571, 1572, 1575 TO 1579, 1581 TO 1584, ON LP79440
- & CA's 14A1 TO 14A5, 14B1 TO 14B5, 14C1 TO 14C6,
- 14D1 TO 14D5, 14E1 TO 14E5, 14F1A, 14F1 TO 14F5,
- 14G1 TO 14G3, 15A1 TO 15A4, 15B1 TO 15B5, 15C1,
- SEC C, PARISH OF WULLA WULLOCK

**R26 INCORPORATING LOTS**

- 1469 TO 1471, ON LP79440



RESTRUCTURED LOTS



LOTS AS ON LP79440

**WELLINGTON PLANNING SCHEME - LOCAL PROVISION**

WELLINGTON  
SHIRE COUNCIL



**NINETY MILE BEACH  
RESTRUCTURE PLAN  
STAGE R25 & R26**

**Fisher Stewart**

ENGINEERS • SURVEYORS • TOWN PLANNERS  
ENVIRONMENTAL CONSULTANTS