

J2 – Coaching for Equity in School Discipline

Presenters:

*Kent McIntosh & María Reina Santiago-Rosario, University of Oregon
Ruthie Payno-Simmons, Michigan's Multi-Tiered System of Supports Technical Assistance Center
Nicholas Diggs, Old Dominion University (VA)*

- **Topic: Equity**
- **Keywords: Climate, Fidelity, Diversity**



Virtual Forum Expectations

EXPECTATION	OVERALL Event	CHAT Tab	POLLS Tab (+Q&A)
BE RESPONSIBLE	<ul style="list-style-type: none"> ✧ Use a shared action plan for your team ✧ Complete session evaluations 	<ul style="list-style-type: none"> ✧ Post positive on-topic comments ✧ Questions for the presenters go in the POLLS tab ➡ 	<ul style="list-style-type: none"> ✧ Add questions before and/or during session
BE RESPECTFUL	<ul style="list-style-type: none"> ✧ Limit distractions ✧ Follow up on your assigned action items 	<ul style="list-style-type: none"> ✧ Use inclusive language 	<ul style="list-style-type: none"> ✧ Use sincere phrasing ✧ Complete additional polls when prompted
BE SAFE	<ul style="list-style-type: none"> ✧ Take movement breaks ✧ Be aware of your stress level 	<ul style="list-style-type: none"> ✧ Engage in productive dialogue 	<ul style="list-style-type: none"> ✧ Ask solution-oriented questions
<i>For Presenters</i>	<ul style="list-style-type: none"> ✧ <i>Ensure Files Tab has current materials and related weblinks</i> 	<ul style="list-style-type: none"> ✧ Monitor and remove inappropriate comments 	<ul style="list-style-type: none"> ✧ Identify common Qs to address in final 15 minutes



Tips for Participants

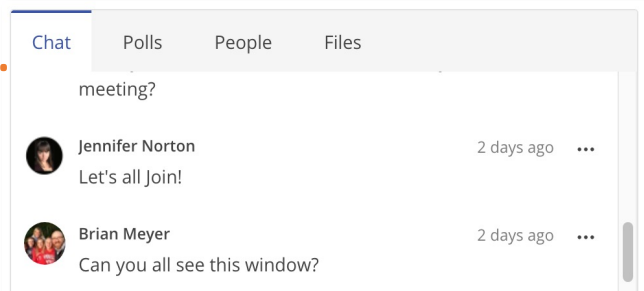
Chat, Polls, and Q&A

1. Use **Chat** for engaging with other participants around the session topic.

Presenters may use chat differently in specific sessions.

Follow overall Forum expectations for *responsible, respectful, and safe* chatting

1.

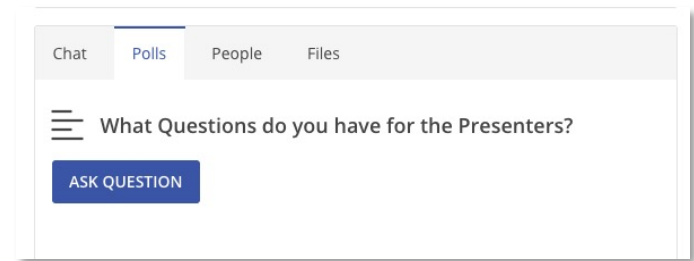


2. Find the **Q&A** under **Polls**.
Questions for presenters go there.

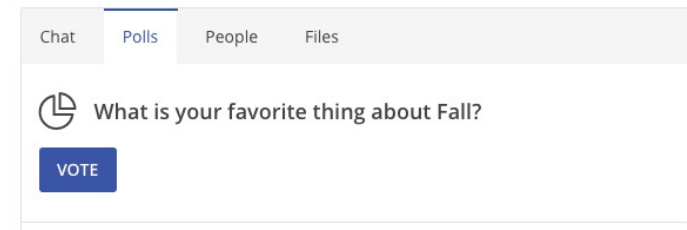
3. Some sessions have other **Polls** or more **Specific Questions**.

Complete those when prompted

2.



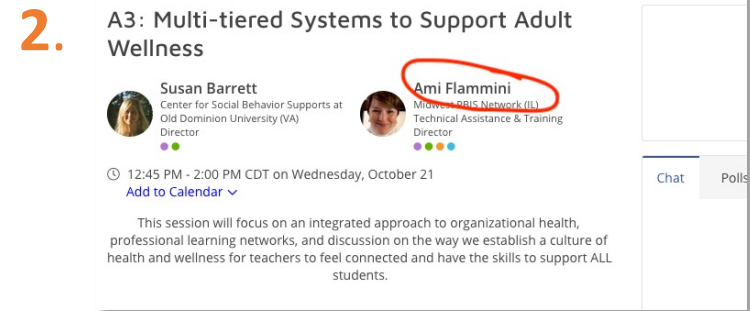
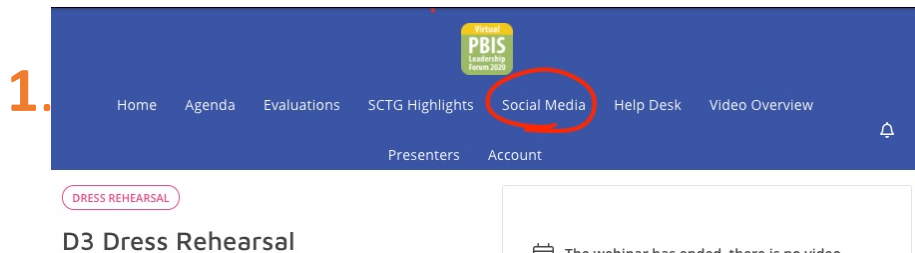
3.



Be careful of accidentally navigating away

While participating in a live Session...Be Present!

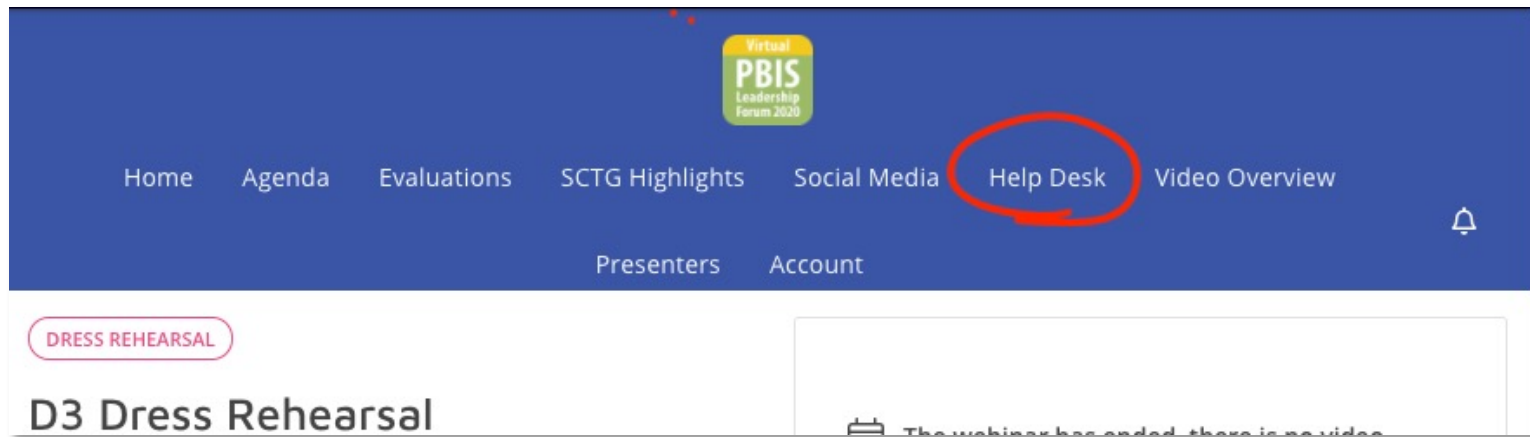
- If you navigate away from the live Session you will need to press the “Join Meeting” button to get back in.
- What does **navigating away** look like? Here are some examples:
 1. Clicking on any area of the navigation menu
 2. Clicking on a Person's name



Tips for Participants

Support is Available

If at any time you need support as a participant,
use the **Help Desk**:



When Working In Your Team

Consider 5 Questions

- How does this compare to our priorities?
- What team would oversee this work?
- What should we stop doing to make room for this work?
- How will we assess whether it's (a) implemented well and (b) working?

Panelists

Ruthie Payno-Simmons
*Michigan's MTSS Technical Assistance
Center*

María Reina Santiago-Rosario
University of Oregon

Nicholas Diggs
Old Dominion University

Prompts

Knowing that you serve
(and have served) in various roles
as coaches...

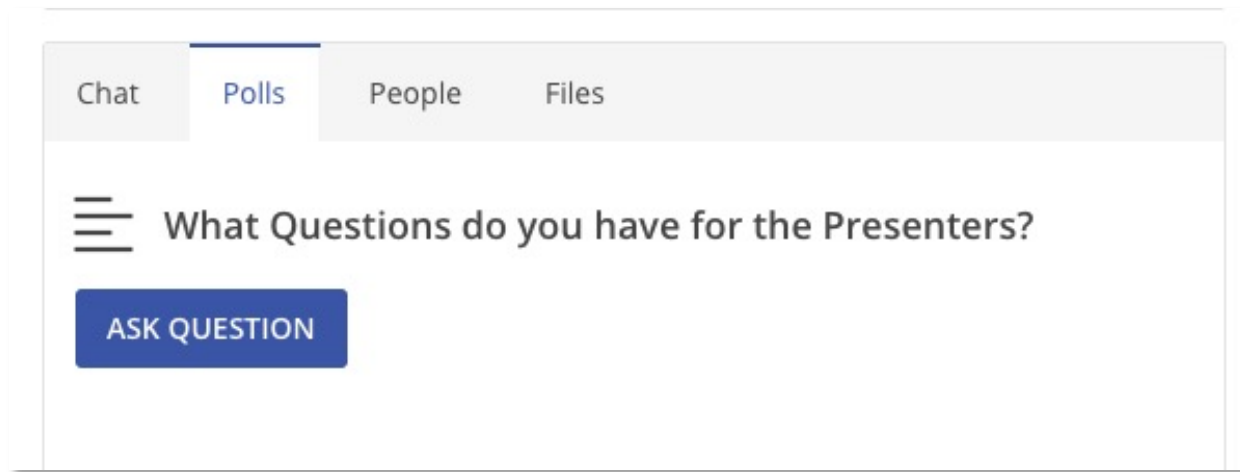
1. *How do you engage in
coaching for equity?*

2. *What are one or two lessons
you've learned?*



Questions & Answers with the Panel

Find the **Q&A** under **Polls**. Questions for presenters go there. Feel free to ask questions or “like” the questions you would most like to be answered.



Use chat to share thoughts with other attendees (but not questions for the panel).



Please Complete this Session's Evaluation

Session #J2 - Coaching for Equity in School Discipline

1. In the Event Platform/App:

- In “Files” tab,
- In “Evaluations” in the navigation menu
- In “Chat”

OR

2. QR Code



SCAN ME

**AFTER YOU SUBMIT EACH
SESSION EVALUATION, CLICK
THE LINK TO ENTER THE GIFT
CARD RAFFLE**

*Evaluations are anonymous!
We send reminder emails to all
participants.*

