

MTSS During the Pandemic: Adapting Systems of Behavior Support



Jen Freeman, Heather George, Tim Lewis,
Kent McIntosh, & Brandi Simonsen



Overview

Welcome, Introductions, & Norms

Guiding Principles

Overview of Resources from Center on PBIS

Overview of Resources and Support from States

Transition Back to School

Q & A



Introductions & Norms



Introduction to Presenters



Jen
Freeman

SCTG TA Director



Heather
George

Co-Director



Tim
Lewis

Co-Director



Kent
McIntosh

Co-Director



Brandi
Simonsen

Co-Director

Center on Positive Behavioral Interventions and Supports



US Department of Education Colleagues

Renee Bradley
Deputy Director Research to Practice
Division, Office of Special Education
Programs

Amy Banks
Carlette KyserPegram
Nicole White

Rita Foy Moss
Group Leader, Office of Safe and
Supportive Schools, Office of
Elementary and Secondary Education

Program Officers, Office of Safe and
Supportive Schools, Office of
Elementary and Secondary Education

Thank you!!!



Norms

- Please use the **Q and A** for any questions you have for the panelists.
 - When posting a question, please tell us your LEA or SEA
 - A moderator or panelist will respond during the webinar
- Please use the **Chat Box** to respond to the discussion or answer questions the panelists ask.
 - When sharing your comment, please tell us your LEA or SEA
 - We will share all responses with OSSS project officers
- Please participate in **polls** throughout webinar
- Please ensure your line remains **muted**



Poll #1: What do you need now through the end of the school year?

- Tier 1 - supporting universal behavior support/core instruction for behavior
- Tier 2 - supplemental behavior supports for those not requiring more than Tier 1 to be successful
- Tier 3 - individualized behavior supports
- Classroom PBIS Supports
- Behavior Support for Families
- Mental Health/Social-Emotional
- Student Engagement
- Students with Disabilities
- Opioid Use/Substance Misuse
- Other - please type in the chat box



Guiding Principles



Guiding Principles



Back to Basics

Do what works and do it well



Leverage Existing Systems

Use your leadership team, PD supports, & other systems



Use Data to Drive Decisions

Screen for elevated risk, monitor fidelity and outcomes, and regularly review data to make adjustments to support



Use MTSS/PBIS Framework

Organize needs and supports for students, families, and educators along a continuum (all, some, few)



Center on PBIS Resources



4 Resources to Support Students During the Pandemic

Learn More

FEATURED RESOURCES

www.pbis.org

RESPONDING TO THE NOVEL CORONAVIRUS (COVID-19) OUTBREAK THROUGH PBIS

March 2020

- Use PBIS systems to teach hygiene and safety skills
 - Frequent handwashing
 - Maintaining safe distances
- Emphasize respect and sense of community
- Support and engage families

www.pbis.org

SUPPORTING FAMILIES WITH PBIS AT HOME

March 2020

Elementary Routine Example	Secondary Routine Example
Get Ready to Learn Wake up, get ready for the day, & eat breakfast Morning Check-In Review morning checklist & expectations. Check in below on any doing (do you have any questions?) Morning Movement Consider a walk outside, yoga, "hair" break on the stairs, etc. Structured Learning Consider time for your student activities, like reading, math, writing Lunch Check-In Go back to lunch, review afternoon schedule & expectations. Check in below on any doing (do you have any questions?) Afternoon Learning Activities Consider a walk, draw, write, or consider online movement options Social Connection Connect with family members or friends via social media, phone, etc. Evening Family Time & Routines Consider family time to connect with each other	Get Ready to Learn Wake up, get ready for the day, & eat breakfast Morning Check-In Review morning checklist & expectations. Check in below on any doing (do you have any questions?) Morning Exercise Choose an exercise activity to do in the home or outdoors Morning Distance Learning Support the student in engaging in distance or remote learning activities Lunch Check-In Go back to lunch, review afternoon schedule & expectations. Check in below on any doing (do you have any questions?) Afternoon Movement Choose an exercise activity to do in the home or outdoors Afternoon Distance Learning Support the student in engaging in distance or remote learning activities Social Connection Connect with family members or friends via social media, phone, etc. Evening Family Time & Routines Consider family time to connect with each other

	Virtual Classroom	Routine	Routine
Be Safe	Be safe in your home or wherever you are staying. Do not go outside.	Be safe in your home or wherever you are staying. Do not go outside.	Be safe in your home or wherever you are staying. Do not go outside.
Be Respectful	Be respectful to others. Do not use bad language. Do not use bad behavior.	Be respectful to others. Do not use bad language. Do not use bad behavior.	Be respectful to others. Do not use bad language. Do not use bad behavior.
Be Responsible	Be responsible for your actions. Do not use bad behavior. Do not use bad language.	Be responsible for your actions. Do not use bad behavior. Do not use bad language.	Be responsible for your actions. Do not use bad behavior. Do not use bad language.

- Using school PBIS systems at home
 - Define home expectations
 - Create predictable routines
 - Give positive feedback
 - Model emotional wellness

CREATING A PBIS BEHAVIOR TEACHING MATRIX FOR REMOTE INSTRUCTION

March 2020

We are...	Existing Class	Teacher-led Whole Group Instruction	One-on-One Instruction	Small Group Activities (Structured Routines)
Safe	<ul style="list-style-type: none"> Check in & determine how safe? Use appropriate language Use appropriate behavior 	<ul style="list-style-type: none"> Ask a student if you are safe? Use appropriate language Use appropriate behavior 	<ul style="list-style-type: none"> Ask a student if you are safe? Use appropriate language Use appropriate behavior 	<ul style="list-style-type: none"> Use appropriate language Use appropriate behavior Use appropriate behavior
Respectful	<ul style="list-style-type: none"> Listen on all times Ask a student if you are respectful? Use appropriate language Use appropriate behavior 	<ul style="list-style-type: none"> Listen on all times Ask a student if you are respectful? Use appropriate language Use appropriate behavior 	<ul style="list-style-type: none"> Listen on all times Ask a student if you are respectful? Use appropriate language Use appropriate behavior 	<ul style="list-style-type: none"> Use appropriate language Use appropriate behavior Use appropriate behavior
Responsible	<ul style="list-style-type: none"> Be on time and ready to learn Ask a student if you are responsible? Use appropriate language Use appropriate behavior 	<ul style="list-style-type: none"> Be on time and ready to learn Ask a student if you are responsible? Use appropriate language Use appropriate behavior 	<ul style="list-style-type: none"> Be on time and ready to learn Ask a student if you are responsible? Use appropriate language Use appropriate behavior 	<ul style="list-style-type: none"> Use appropriate language Use appropriate behavior Use appropriate behavior

- Define and teach expectations for distance learning
 - Keep the school-wide expectations
 - Use online activities as settings
 - Teach online-specific behaviors
- Tips
 - Use evidence-based practices
 - Attend to equity in access

GUIDANCE ON ADAPTING CHECK-IN CHECK-OUT (CICO) FOR DISTANCE LEARNING

May 2020

Bugan Leaders Card

Student Name: _____, Guardian Name: _____, Date: _____

Check-in Time: _____, Check-out Time: _____

	School-wide Expectations	Morning Routine	Remote Instruction	Free Time	Chores	Bedtime Routine
Be Safe	0 1 2	0 1 2	0 1 2	0 1 2	0 1 2	0 1 2
Be Respectful	0 1 2	0 1 2	0 1 2	0 1 2	0 1 2	0 1 2
Be Responsible	0 1 2	0 1 2	0 1 2	0 1 2	0 1 2	0 1 2
TOTAL POINTS						

Point Goal: _____, Goal Met? ☐ Yes ☐ No, REWARD: _____

- Suggestions for CICO adaptations
 - Ensure positive adult interactions
 - Reassess needs of students
 - Revise the card and re-teach
 - Include families and other staff
 - Plan for flexibility in family capacity

Some State Resources

POWERED BY PBIS Positive Behavioral Interventions & Support

www.pbis.org/about/pbis-state-coordinators

PBIS State Coordinators

State	Coordinator Name	Contact Information
Alabama	Dr. Sara McDaniel	sara.mcdaniel@ua.edu
Alaska	Dr. Sara McDaniel	sara.mcdaniel@ua.edu
Arizona	Dr. Sara McDaniel	sara.mcdaniel@ua.edu
Arkansas	Dr. Sara McDaniel	sara.mcdaniel@ua.edu
California	Dr. Sara McDaniel	sara.mcdaniel@ua.edu

POWERED BY PBIS Positive Behavioral Interventions & Support

College of Education
Alabama Positive Behavior Support Office

<https://www.facebook.com/apbso/>

- Example adapted matrix
- Example adapted recognition menu
- Technology-based social, emotional learning ideas

Sara McDaniel, Ph.D.
sara.mcdaniel@ua.edu
Alabama Positive Behavior Support Office
alabamapbis.ua.edu

THE UNIVERSITY OF ALABAMA®

Florida PBIS Florida Positive Behavioral Interventions & Support Project
A Multi-Tiered System of Supports

Home About Foundations Coaching Tiers Other Topics **NEW! Online Learning** Contact

CHAT CALL JOIN
STAFF CHATS every Tuesday and Thursday.
Click here for more information.

Visit our new TA Chats [HERE](#)

Other Topics Include:
Integrating Initiatives
Climate and Safety
Equity
Mental Health & Well-being

www.flpbis.org

www.flpbis.org

Online Learning

TA Chats
The FLPBIS Project offers a series of live and recorded online TA Chats for schools and districts to use current year TA chats and to access recordings of previous chats.

Skill Development Modules
The FLPBIS Project offers a series of live and recorded online Skill Development Modules for schools and districts to use current year Skill Development Modules and to access recordings of previous chats.

Instructional Videos
By: USEPBIS.ORG

Virtual Training
Check out the available modules in the table below!

NEW! Online Learning:
TA Chats
Instructional Videos & Fact Sheets
Skill Development Modules
Virtual Training

Instructional Videos
By: USEPBIS.ORG

Overview
Supporting Virtual Schooling
Lead PBIS at Home
Essential PBIS Practices at Home
Tips for Teams: Thinking Positively
Conducting Community Building Circles Online
Supporting Families to Use Circles of Home
APBS 2020 Sessions

Georgia Department of Education GaDOE Community

- An online, community platform providing peer-to-peer and GaPBIS-facilitated communication
- Provides PBIS-related groups, forums, and learning modules
- GaPBIS proposed the idea, GaDOE adopted across multiple programs
- Launching in May, PBIS will be the first team of users across state
- Link: community.gadoe.org (only available to educators in Georgia)

27 Richard Woods, Georgia's School Superintendent | Georgia Department of Education | Educating Georgia's Future

Georgia Department of Education www.GaPBIS.org

- A content-focused website that provides resources and tools to PBIS educators (in Georgia and outside the state)
- Includes: learning modules and micro-courses, webinars, toolkits, a resource library, events info and links, data dashboards, annual reports, case studies, newsletter, podcast, and videos
- Launching end of May

28 Richard Woods, Georgia's School Superintendent | Georgia Department of Education | Educating Georgia's Future

MiMTSS Technical Assistance Center

- New website: www.mimtsstac.org
- COVID-19 Resources page
- Includes resources for Educators and Teams from our center
- Includes links to additional resources from Michigan and National Centers

MiMTSS TAC

29

MICHIGAN EDUCATION

MO SW-PBS

Who we are...

- Mo SW-PBS has provided training to schools and districts for over **13 years**
- 31** state and regional consultants
- Currently partnering with **163 districts** and **551 public schools**

What we provide

- Free Curriculum materials and resources available on our website
- Virtual Learning Modules (in progress)
 - Due to Covid 19 Pandemic, we are expediting development

Missouri Schoolwide Positive Behavior Support
missourimtsstac.org

Missouri Department of Education

MO SW-PBS

MO Center for SW-PBS
College of Education
University of Missouri

MO SW-PBS *DIY* Materials

NEW!

- [MO SW-PBS Handbook](#)
- [MO SW-PBS Tier 1 Implementation Guide \(IG\)](#)

Coming this Summer!

- MO SW-PBS Tier 2 Implementation Guide (IG)
- MO SW-PBS Virtual Training Modules: Tier 1
- MO SW-PBS Virtual Training Modules: Tier 2



Integrated Academic & Behavior Systems

- <https://www.dpi.nc.gov/districts-schools/districts-schools-support/integrated-academic-behavior-systems>

NC MTSS Implementation Guide

- <https://www.livebinders.com/play/play?id=2052295#anchor>

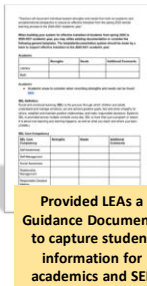
COVID-19 Response & Resources

- <https://www.dpi.nc.gov/news/covid-19-response-resources>

Support for LEAs During COVID 19



Created a tool to point LEAs to Social Emotional Learning (SEL) resources



Provided LEAs a Guidance Documents to capture student information for academics and SEL



Developing a Practice Guide with additional resources and tools to support the return to school



Multi-Tiered Systems of Support - Distance Learning Resources

[OSDE FAQ's](#)
[OTISS](#)
[Student Support](#)



Tier 1 Data



Tier 1 Data

- [Family Guide to Positive Behavior](#)
- [Behavior Management Family Guide](#)
- [Building Relationships, Hope & Resilience](#)
- [Virtual and Distance SEL](#)
- [Tools to Teach: Helpful Tips for Parents](#)
- [Self-Care for Parents & Caregivers](#)
- [Self-Care for Educators](#)



REACH MS Menu

- About
- COVID-19
- PEBS N-10
- PEBS Early Childhood
- PEBS Significant Cognitive Disabilities
- SEL
- Family
- PEBS Model Sites
- SEL Model Sites
- Positive Training
- Contact

About

REACH MS COVID-19 Resources

About REACH MS

Realizing Excellence for All Children in Mississippi (REACH MS) is Mississippi's State Personnel Development Grant which focuses primarily on supporting school-wide and district-wide implementation of Positive Behavior Intervention and Support (PBIS) at the elementary, middle, and high school levels. Recently, several new initiatives were added: PEBS Early Childhood, Universal Design for Learning and Significant Cognitive Disabilities. According to The Mississippi Department of Education in 2019, the grant is operated by the University of Southern Mississippi's Department of Curriculum, Instruction and Special Education.

Join Our Mailing List and Email:

The purpose of REACH MS is to:

- Provide high-quality professional development opportunities meeting the needs of educators, related service providers, families and children of our state.
- Increase the engagement of stakeholders within and beyond the Mississippi Department of Education to support a more unified, sustainable structure of professional development processes, products, and opportunities for both pre-service and in-service educators.
- Engage and support local education agencies, institutions of higher learning, families, and other stakeholders to increase Mississippi's capacity to meet state goals relevant to PBIS through program implementation.
- Mississippi's State Personnel Development Grant is a federal grant.
- Awarded to the Mississippi Department of Education in 2005, renewed in 2010 and 2015.
- Operated by the University of Southern Mississippi's Department of Curriculum, Instruction and Special Education.
- Tier 1 and 2 Data.

Universal Design for Learning (UDL):

- All 3 Categories:
 - **PEBS N-10**
 - **Positive Behavior Interventions and Supports (PBIS)**
 - Tier 1, 2, & 3- N-10 Initiatives
 - Student specific for students with significant cognitive disabilities (SCD) - NEW
 - Early Childhood Settings - NEW
 - Family center in
 - Academic Instruction Centers
 - Therapeutic Group Sessions

REACH MS Webinars and Resources

www.reachms.org

- *Coming Soon!:* Online MTSS PBIS Tier 2 Modules
- Online MTSS PBIS Tier 1 Modules
- PBIS Overview
- Utilizing PBIS at Home – Supporting Families During COVID – 19
- Utilizing PBIS During COVID – 19
- Early Childhood CoP: Strategies and Resources for Distance Learning
- Significant Cognitive Disabilities CoP: Strategies and Resources for Distance Learning
- At Home Learning Schedule and Daily Planning Tool
- Special Education Tip Sheet for COVID – 19
- Early Childhood Tip Sheet for COVID – 19

Rhode Island Department of Education



Rhode Island Supports for Educators, Students and Families in Response to COVID-19:

- Implementing virtual coaching for SCTG & MTSS Teams: using a variety of platforms to meet with colleagues, grantees, & LEAs to communicate support, share resources and continue the work
- Pivoting to meet the evolving needs of districts implementing Distance Learning, specific to behavioral health
- Helping people understand the policy & protocol enablers for access to behavioral health services in this pandemic response environment.



Rhode Island Department of Education: *Navigating Our Way*



The RI Department of Education [website](#) contains a variety of resources for educators, [mental health](#) professionals, students and families in response to COVID-19

This [link](#) is to BRIDGE-RI: Rhode Island's home for all things MTSS, offering free PD to RI Educators that is self-paced and facilitated: <https://mtssri.org/>



Tennessee Behavior Supports Project's

COVID-19 Response

Includes resources for:

Educators teaching online

Families teaching at home

Additional strategies for this time



<http://tennesseebsp.org/tbsp-covid-19-response>

TN Behavior Supports Project COVID-19 Response

Resources for Educators

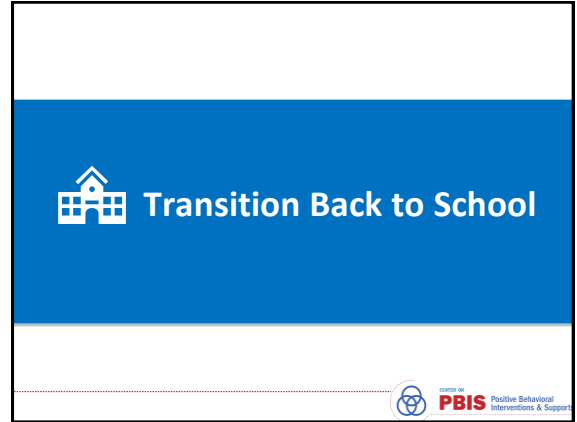
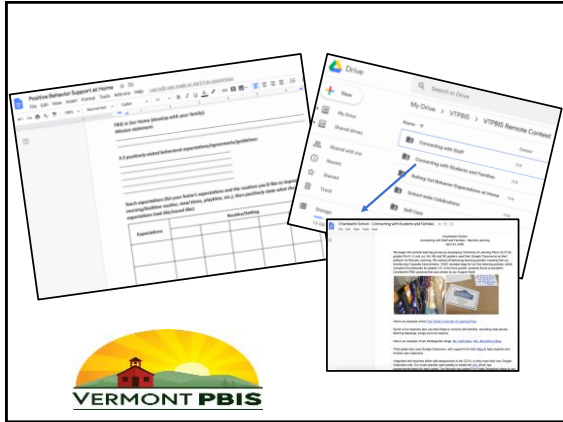
- Weekly Technical Assistance Opportunities
 - Twitter Chats (@Rti2B)
 - Virtual Office Hours
- Tip Sheets
 - Online Learning Environments
 - Tier II Home Supports (CICO, BrB)
 - Ideas to End the School Year

Resources for Families

- Quick Tips for Families
 - Video Series
 - Tip Sheets
- Sample Products for PBIS Home Implementation
 - Daily Schedule
 - Home Matrix (English & Spanish)
 - Home Acknowledgment Ticket

<http://tennesseebsp.org/tbsp-covid-19-response>

<https://www.pbisvermont.org/>



Getting Back to School after Disruptions:
Resources for Making Your School Year Safer, More Predictable, and More Positive

From the Vermont Department of Education, Vermont State Office, Burlington, Vermont

<https://www.pbis.org>

- Re-teach, remind, and acknowledge positive school-wide expectations
- Re-teach classroom routines
- Focus on the positive, and avoid punitive approaches
- Get to know your students - again.
- Look for signs that students might need more help
- Re-engage families as partners in their child's education

Path Ahead

- Many unknowns
- A year of support
- Stay in touch & let us know how we can help you!

Poll #2: Given this uncertainty, what do anticipate being the most pressing needs next Fall? Pick your top 3.

- Re-establishing MTSS to support behavior in a school
- Attending to the social/emotional needs of students
- Addressing enhance trauma students have experienced with COVID 19 serving as an Adverse Childhood Experience
- Revising MTSS to address the "new normal": Changing expectations, rules and routines, different ways of rewarding students, etc.
- Implementing MTSS is a combined/hybrid school and distance learning system
- Establishing a balance between academic, social, emotional and behavioral demands
- Academic and behavioral screening and problem-solving
- Supporting the MTSS triangle with more effective Tier 1 and 2 strategies
- "Catching students up" academically, socially, emotionally and behaviorally
- Other pressing needs? Share in chat room

Q&A

VERMONT PBIS Positive Behavioral Interventions & Support

Poll #3: What is your preferred mode for TA? Please rank order the top three preferred methods of access.

- Webinars
- Live TA Chats
- Recorded Modules
- Virtual Training
- Virtual Team Training
- Face-to-face Training
- Paper products/materials
- Other: please add in chat box

Participants:
Please complete the Evaluation
(2 options to complete)

1. Scan QR Code for online evaluation

OR

1. Click this link for online evaluation:

<https://bit.ly/CenterEventTTA>

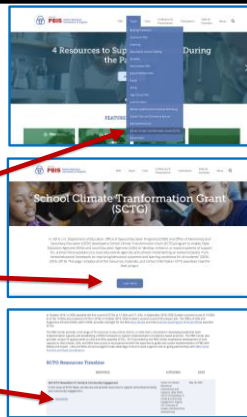


Thank you for your feedback!



To find today's webinar:

- Go to **pbis.org**
- Select **"School Climate Transformation Grant (SCTG)"** topic
- Click **Learn More**
- Webinar (recording and ppt file) will be posted as a new resource in within the next week



Thank you!

