

### Features :

- Input Voltage: 100-277VAC 50/60Hz.
- UL, DLC certified.
- 120-130 lm/W high lumen efficacy, 80+ CRI.
- 0-10V Dimmable LED driver.  
Power Adjustable: 70W/60W/50W.  
CCT Adjustable: 4000K/5000K/6000K
- High efficiency LM80 SMD LEDs.
- Designed for 50,000 hours lifetime.
- Instant startup, soft light, no glare, no noise.
- Easy for installation.

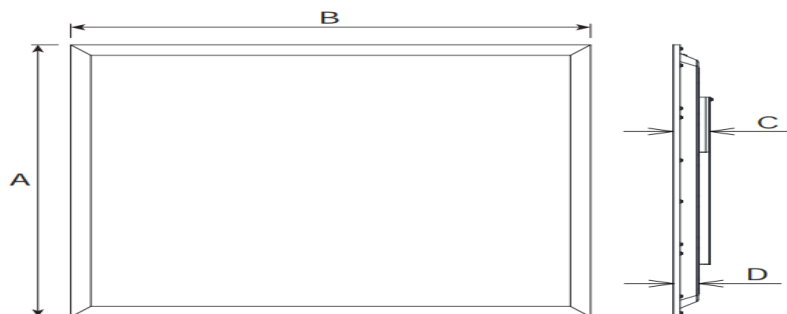


### Application:

- ◆ Factory, offices .
- ◆ Living room, clubs, lobbies.
- ◆ Supermarkets, school, hotel.
- ◆ Exhibitions, etc..



### Product Dimension:



Dimension (mm)			
A	B	C	D
603	1213	42	32

### Specifications

#### LED Backlit Panel

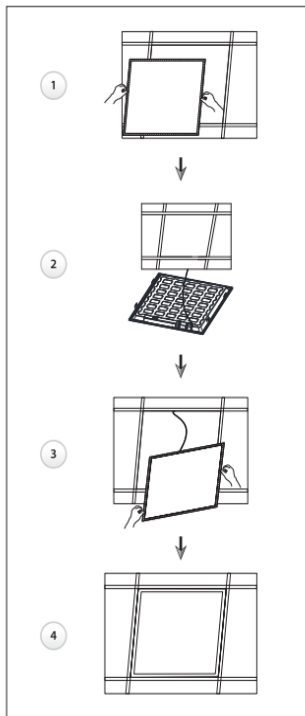
Model:	KIPA605N6031210 (BL)
Wattage:	70W/60W/50W
CCT:	4000K/5000K/6000K
Input Voltage:	100-277VAC 50/60hz
Power Factor:	>0.9
Efficacy:	125LM/W
CRI:	>80
THD:	<20
Dimmable:	Yes
Dimensions:	2*4FT 603*1213mm
Lifespan:	>50,000hours
Beam Angle:	120°
Operating Temperature:	-20°C to 50°C
IP Grade:	IP20
Certification:	UL DLC

### Package

Size	Qty/Carton	Gross Weight	Net Weight
124*25*63cm	6	25.9Kg	23.5Kg

### Installation instructions

**Recessed**



**Suspended**

