



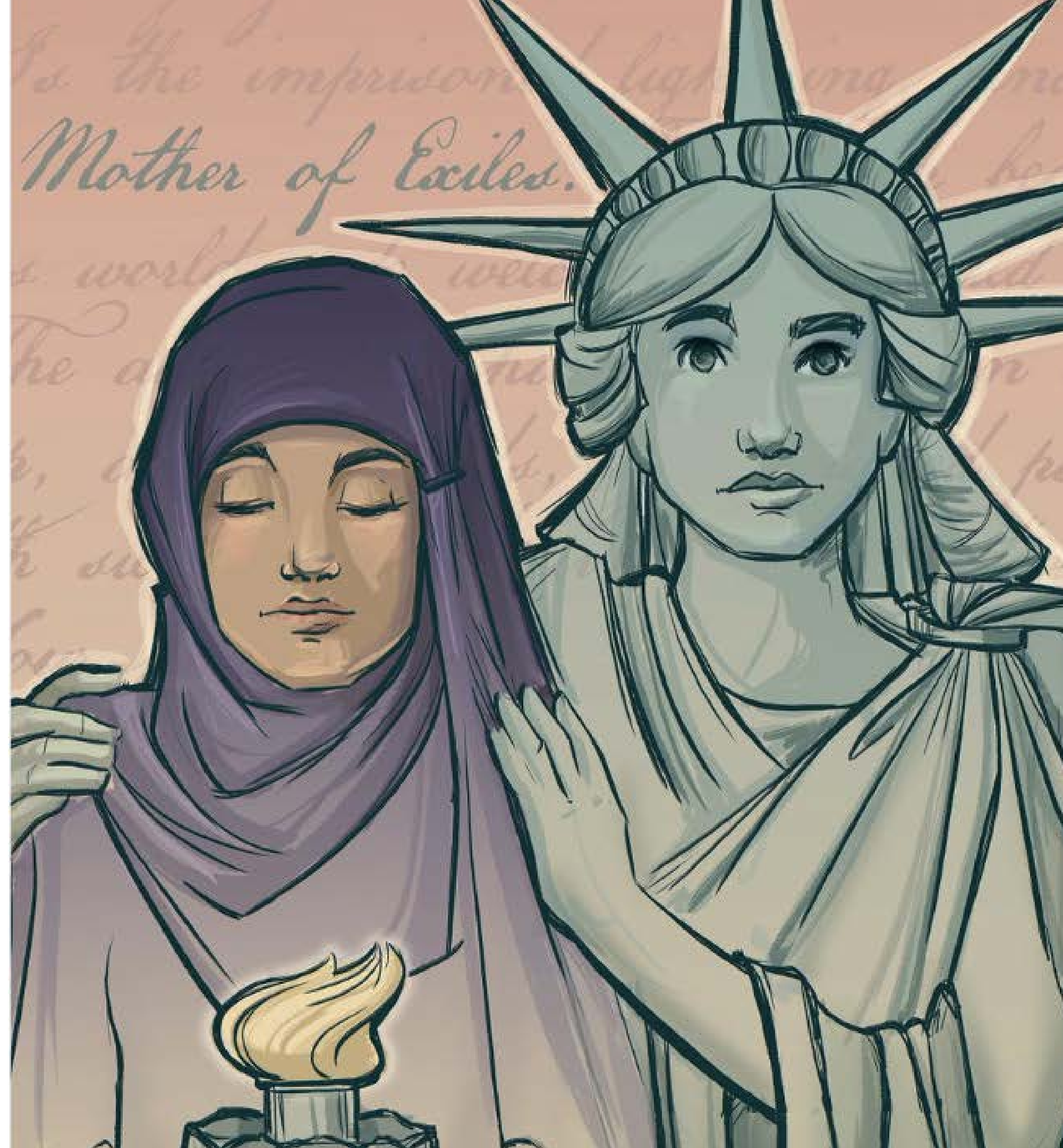
**Ming-Ming Tung-Edelman**  
*Founder & Executive Director*



**60%**

**Unemployment rate  
for refugee women\***

\*Georgetown Institute for Women, Peace and Security





**85%**

**Textiles ended in  
the landfill\***

\*Earth.org



Swapan Photography



# REFUGEE ARTISAN INITIATIVE

since 2017



**Circular Equitable Economy**



# REFUGEE ARTISAN INITIATIVE





# Nest Seal





# Upcycled Over 120,000 Items





**Diba**

*From Afghanistan*



**Baseerah**

*From Afghanistan*



**Mahbooba**

*From Afghanistan*



**Nafisa**

*From Afghanistan*



**Inzali**

*From Myanmar*



**Julie**

*From Myanmar*



**Nilofar**

*From Afghanistan*



**Diba**

*From Afghanistan*



**Adiba**

*From Afghanistan*



**Farida**

*From Afghanistan*



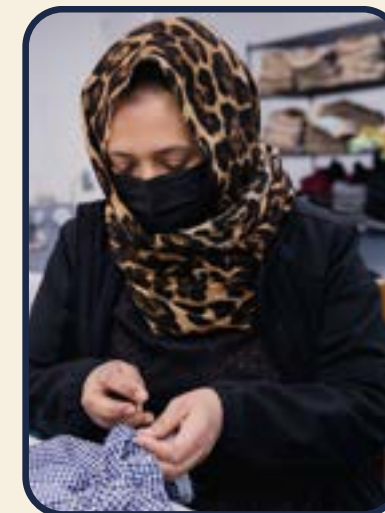
**Yalda**

*From Afghanistan*



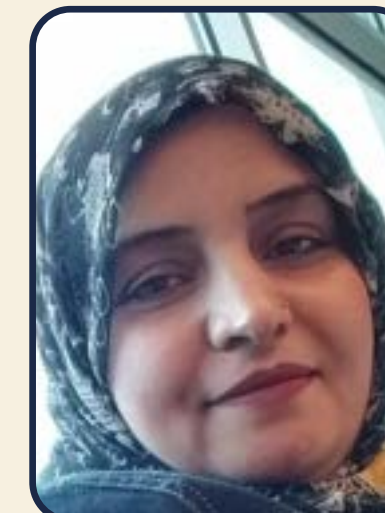
**Pri**

*From Myanmar*



**Muntaha**

*from Ethiopia*



**Mehnaz**

*From Pakistan*



**Rahel**

*From Ethiopia*



**Karima**

*From Morocco*



**Noi**

*From Vietnam*



**Nafisah,  
Maryam,  
Nooriah**

*From  
Afghanistan*



**Hpala**

*From  
Myanmar*







# Stay Connected



**Refugeesart.org**



**@refugeesarts**



**@refugeesarts**



**@Artisanrefugee**



**Refugee Artisan**

**Ming-Ming Tung-Edelman**  
*Founder & Executive Director*

**ming-ming@refugeearts.org**