

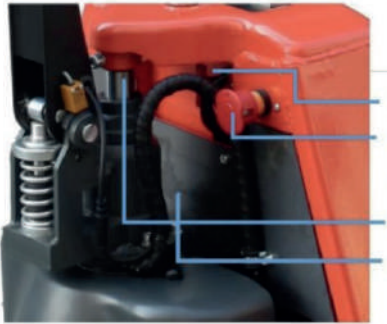
DYNALIFT 120



FULLY ELECTRIC PALLET TRUCK 2.0T

- Canbus Handle with code lock, Fully Electric handle
- Easy installation/ Maintenance/ Replacement
- Recharge alert
- Fast charging option

PRODUCT FEATURES



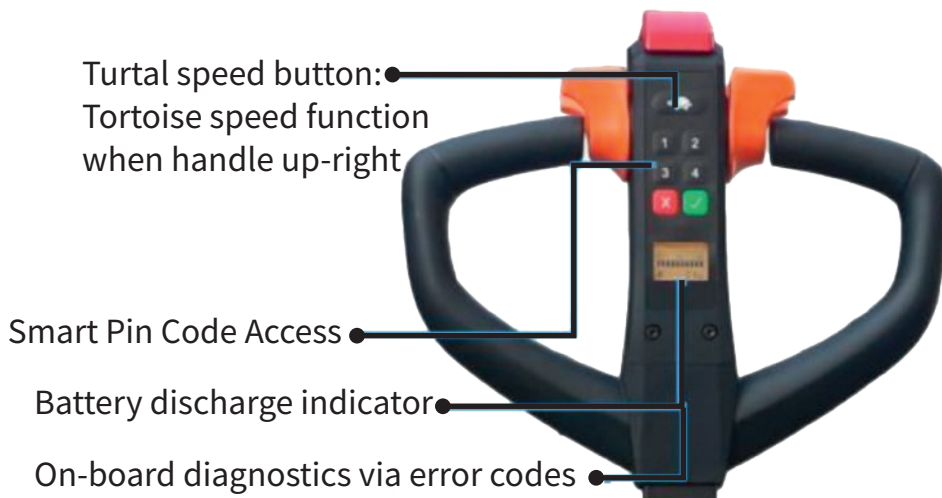
Battery plug--For charging and change battery
Emergency button-located where you can easily reach and control, assuring safety for people and truck.

Electric Lifting & Lowering
600W German Bucher Pump Station



190mm drive wheel make the truck more stable when loading & moving, 48/850W DC Brushless motor is more powerful, maintenance free, big transmission ratio gearbox, high gradeability, low energy consumption.

Rigid and robust fully enclosed drive wheel cover gives all-round foot protection for operator.



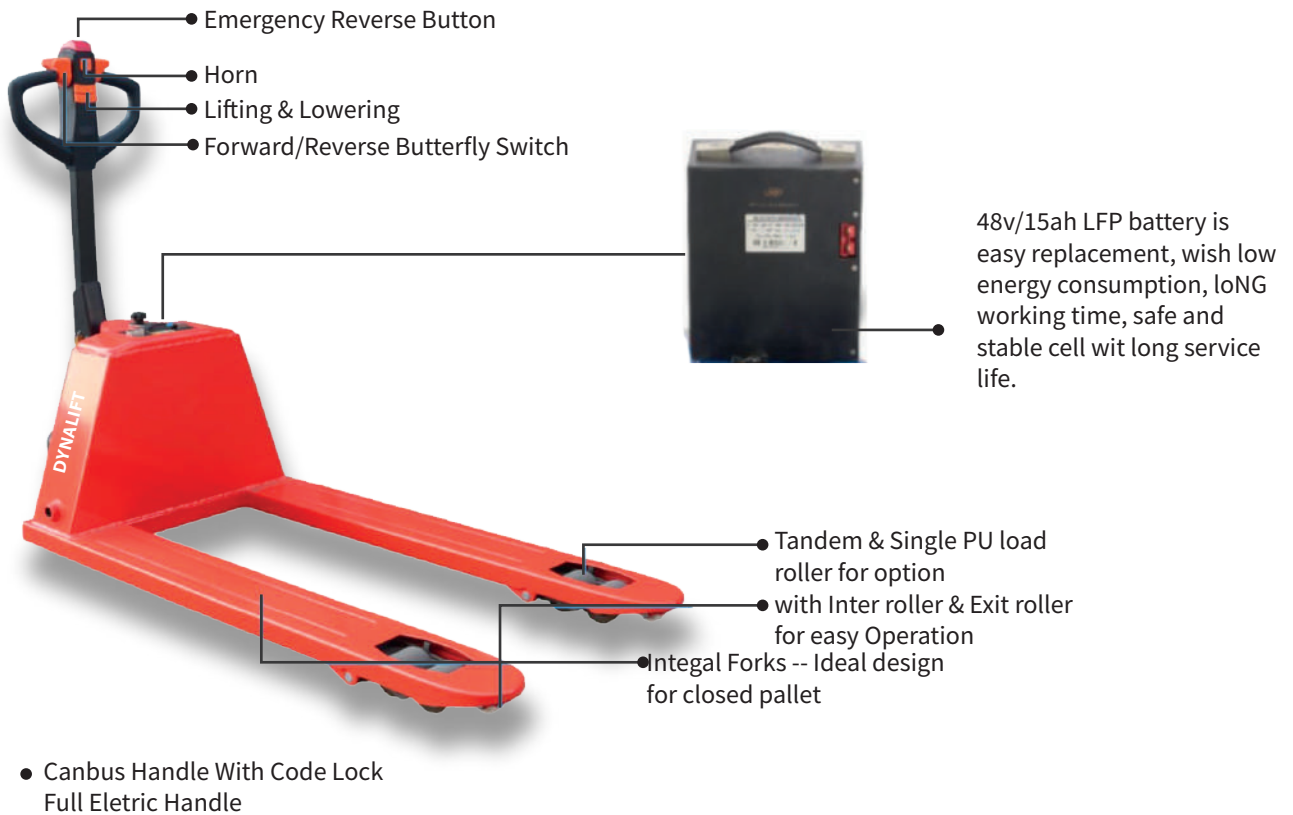
Turtle speed button:
Tortoise speed function
when handle up-right

Smart Pin Code Access

Battery discharge indicator

On-board diagnostics via error codes

PRODUCT FEATURES



PRODUCT PARAMETERS

Model designation		DYNALIFT 120
Capacity	kg	2000
Load centre	mm	600
Wheelbase	mm	1220
Drive wheel size, number	mm	Φ190x70/1
Load roller size, number	mm	Φ80x70/4
Fork height	mm	85-195
Hegiht of tiller in drive position Min/Max	mm	1200
Totally length	mm	1540
Fork size	mm	560x1150/680x1220
Ground clearance	mm	30
Min. Right-angle stack channel width, (Pallet size 1000x1200, 1200 placed along cargo fork)	mm	1500
Turning radius	x mm	1350
Drive speed with/ without loading	km/h	4.5
Gradeability	x %	8-20
Brake		Electromagnetic brake
Power of drive motor	w	850W
Power of lifting motor	w	600W
Battery capacity	V/AH	48V15AH
Battery weight	kg	6.3kg
Working time after full charge	H	>3h