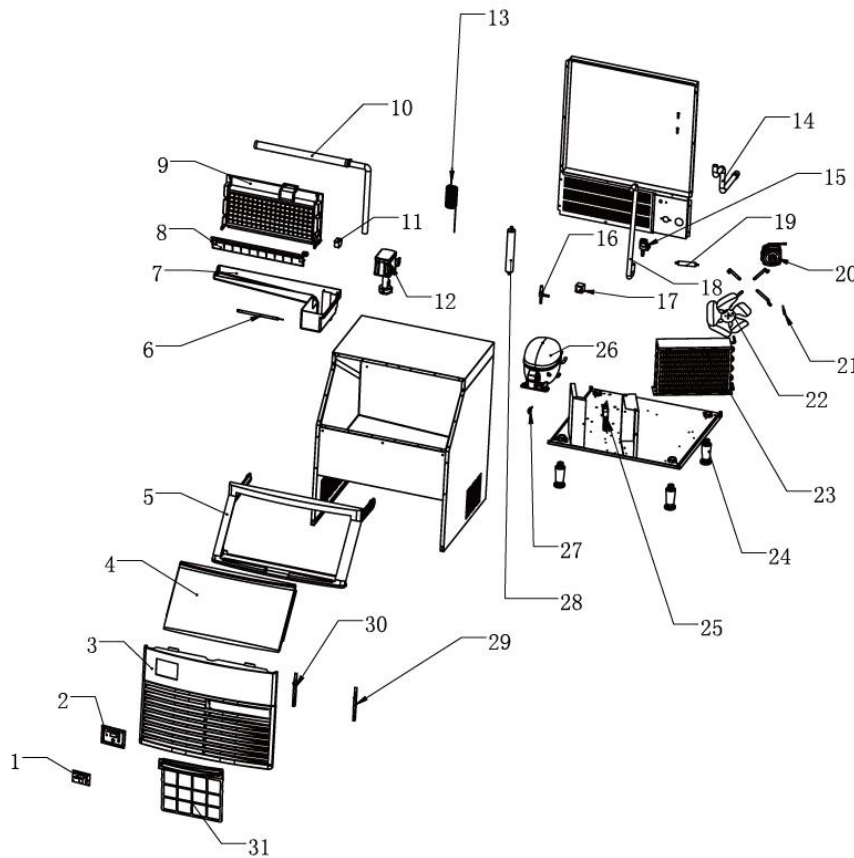


iBC-210P Parts Breakdown



Ref. Part No.	Name	Specification
1	08.0.0076-00 Display panel 66414762-01	No voice, with cleaning button
2	54.0.0017-00 Control Panel Components - 0 Series	ABS black gray
3	04.0.0014-03 Front venting window -160/210/280	ABS injection molding black gray front pumping
4	52.0.0005-03 Door panel assembly - black gray	160/210/280
5	52.0.0002-03 Door frame assembly - black gray	160/210/280
6	08.6.0012-00 Cold light	9 lights X3ES-A matte blue light L: 180
7	04.0.0027-00 Sink-160	160 injection molding overflow M5002
8	04.0.0046-00 Skateboard-210	18 injection Molding Homemade M1072
9	06.3.0010-00 Evaporator-91	Evaporator-91
10	51.1.0005-00 Sprinkler tube assembly	18 columns
11	08.1.0064-01 Ice full sensor - Hall type	1400mm-3 line with Chuangli Logo
12	55.0.0021-00 Pump assembly -60-280	White 115V
13	03.2.0363-00 Capillary	TP2M-OD2.8*ID1.27*T/*2600mm
14	03.0.0042-00 Off-board drain	Bellows gray 1.6 m M26
15	06.6.0014-00 Inlet valve	110~120V 4W 50/60HZ blue 1266220 1.2L
16	06.4.0002-00 Defrost valve body	6A
17	06.4.0027-00 Defrost valve coil	115V 6A 800MM
18	03.0.0033-00 Silicone hose	White Φ14*Φ9.5
19	06.5.0004-00 Dry filter	Φ19*150*3.1*6.5
20	06.1.0016-00 Fan	EBM 10W 115VAC 50/60HZ
21	08.1.0025-00 Condensation sensor	Stainless steel probe 1000mm
22	06.1.0031-00 Wind leaf	Φ230 28°
23	06.0.0003-00 Condenser-210	Air cooled 200A
24	52.0.0030-00 Foot assembly	Ice bucket foot
25	08.0.0032-00 PC board 66410011-21	Vertical type machine, switching power supply
26	06.2.0173-00 Compressor NLE8.0CN	115V / 60HZ / R290
27	08.1.0036-00 LED light reed switch magnetic switch	1800mm
28	06.5.0041-00 Gas-liquid separator	Φ30*220*8.1*8.1
29	04.0.0189-00 Filter right card slot -160/210/280	ABS injection molding black gray front pumping
30	04.0.0188-00 Filter left card slot -160/210/280	ABS injection molding black gray front pumping
31	04.0.0016-03 Ventilation window filter -160/210/280	ABS injection molding black gray front pumping