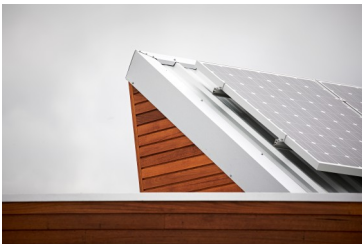


PAST PROJECT : BENDIGO BANK NEERIM SOUTH



CLIENT

- > Neerim District Community Services

LOCATION

- > Neerim South, Victoria

ARCHITECT

- > Neerim Project Design

VALUE

- > \$750k

STATUS

- > Completed Sep 2013

SUMMARY

- > Kubale Constructions was awarded the competitive tender for the construction of a custom designed branch building for the Neerim District Community Bank.

Set in the farming town of Neerim South in Gippsland in Victoria, the building design incorporated features, finishes and a colour palette to compliment the surrounds.

Construction required imported aerated ceramic Clinka blocks and extensive exterior cladding of locally sourced and milled silver top gum. The scope of works included the complete interior fit out with internal glazed partitions.

Outside, the contract included various stainless steel items, the ATM installation, solar panels on the roof and integration into the existing street scape with exposed aggregate feature paving.

The project time-frame was tight and needed to accommodate the schedule of the imported blocks. Construction was completed within the contracted budget and timeframe.

CONSTRUCTION TECHNIQUES EMPLOYED

- > Aerated ceramic Clinka blocks
- > Internal fit out with internal aluminium glazed partitions
- > Extensive decorative milled silver top gum facade