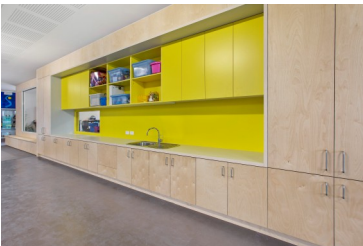


PAST PROJECT : SEAFORD PARK PRIMARY SCHOOL



CLIENT

- > Department of Education and Training

LOCATION

- > Seaford, Victoria

ARCHITECT

- > Chalk

VALUE

- > \$3.0m

STATUS

- > Completed Feb 2018

SUMMARY

- > Working within an operational education site, our most senior Site Manager began work in May 2017 to build a bespoke educational facility at the Seaford Park Primary School.

After the removal of portable rooms, the site was scratched clean and a 1300 sq. metre raft slab was laid in the shape of the letter "Y" from an aerial view. A structural steel portal frame was then erected over the slab followed by a very complex 3D roof providing atrium lighting to the central hub.

Infill steel stud work was then built within the frame over which steel Colourbond cladding was applied. Given the purpose of the rooms, almost all internal linings provided superior acoustic properties including the ceilings. Rooms were divided by oversize sliding doors and openings completed with a double-glazed commercial aluminium window suite.

The scope included extensive joinery, a kitchen and data cabling to finish. The site was handed over in time for the 2018 school year and is now fully operational.

CONSTRUCTION TECHNIQUES EMPLOYED

- > Structural steel portal frame
- > Acoustic linings throughout with double-glazing
- > 1300 sq. metre complex 3D roof in the shape of the letter "Y" from an aerial view