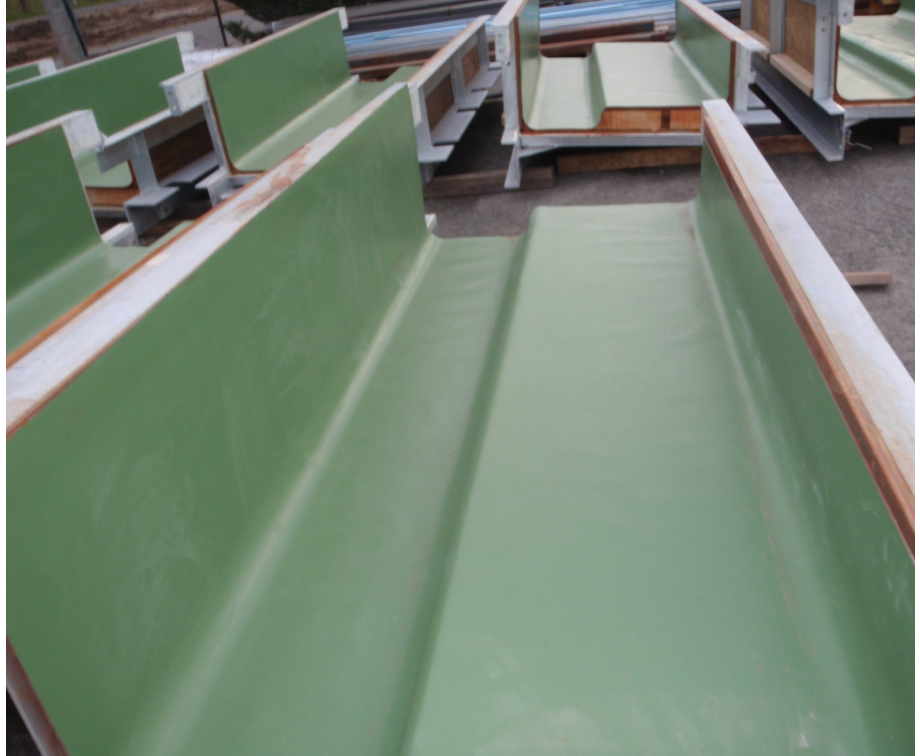
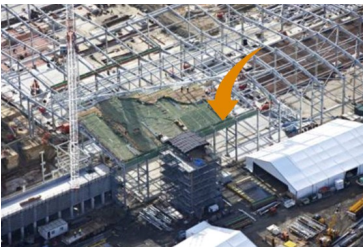
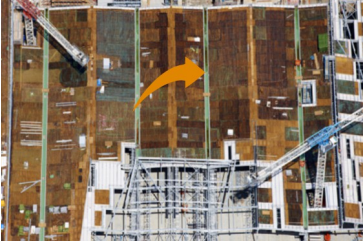


PAST PROJECT : WONTHAGGI DESALINATION PLANT GUTTERS



CLIENT

> Theiss

LOCATION

> In-house

ARCHITECT

> N/A

VALUE

> \$300k

STATUS

> Completed Aug 2011

SUMMARY

> In a departure from traditional on-site construction, Kubale Constructions was awarded the contract for the manufacture of large guttering modules for the roof at the Wonthaggi Desalination Plant. Rather than constructing them in-situ, our facility was fitted with custom designed jiggging and equipment to handle the job in-house.

The production schedule demanded by the principle contractor (Theiss) fluctuated greatly. It was necessary that we produce the modules in-step with the building schedule of the plant at Wonthaggi; delays were not accepted.

Simply handling the modules safely was difficult because each 8 metre steel section weighed over 500kg. Works included lining the modules with copper treated ply followed by a seam welded PVC membrane (technique new to AU). We were required to learn new techniques and develop our own production methodology to maintain quality and increase production output as demanded.

We hit every deadline imposed by this aggressive schedule while maintaining excellent quality in workmanship.

CONSTRUCTION TECHNIQUES EMPLOYED

- > Custom in-house jiggging and repetitive manufacturing techniques
- > Lifting and handling of massive steel and timber structures
- > Large scale adhesive application and long continuous seam welding
- > Tight scheduling and the ability to scale up and down as Theiss demanded