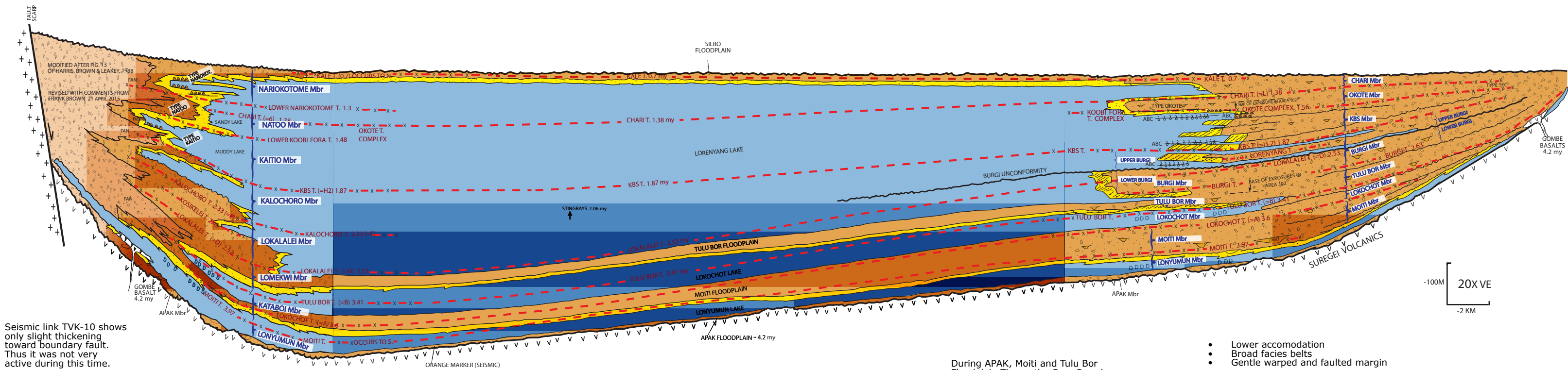


Schematic Reconstruction of Omo Group Strata
at about 0.7 my Across Northern Lake Turkana

Omo Group Strata in Nariokotome Region
Nachukui Formation

Omo Group Strata in Koobi Fora Region
Koobi Fora Formation



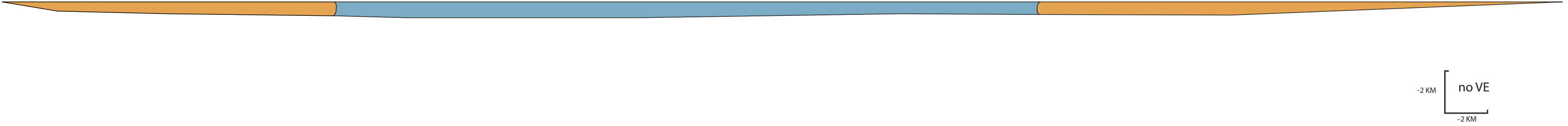
Seismic link TVK-10 shows only slight thickening toward boundary fault. Thus it was not very active during this time.

During APAK, Moiti and Tulu Bor Floodplain Times, the Omo Rver is interpreted to have flowed to the southeast becoming the Turkana River which flowed into the Indian Ocean.

During what may have been the high stand of Lorenyang Lake (about 2.06 my) stingrays entered the lake from the Indian Ocian.

- Lower accomodation
- Broad facies belts
- Gentle warped and faulted margin

Stratigraphic model (above) with no vertical exaggeration



Stratigraphic model with approximate thickness in lake axis from seismic reflection profiles

