

## FV Gunnar Langva



**FV Gunnar Langva – 74,80m Pelagic trawler/ Purse seiner. Delivered in November 2019 by Westcon Yards AS, Ølensvåg, Norway as Yard no. 35 to ship-owner Gunnar Langva AS in Ålesund. The design is by Kongsberg Maritime, Norway. The vessel is built for pelagic trawling and Purse Seining carrying the fish in RSW chilled holds.**

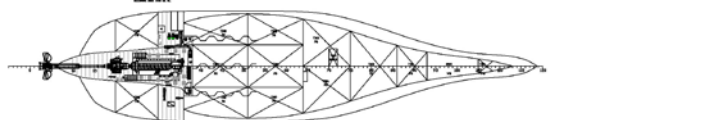
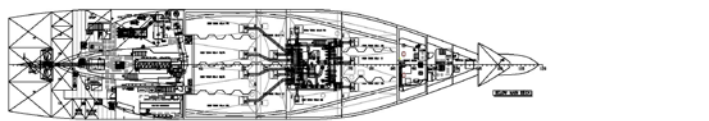
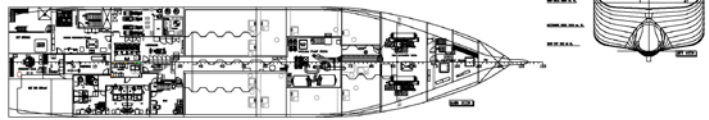
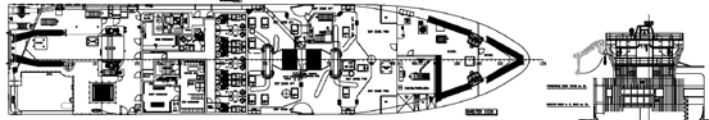
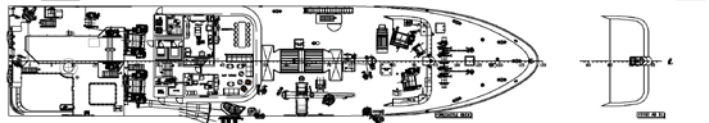
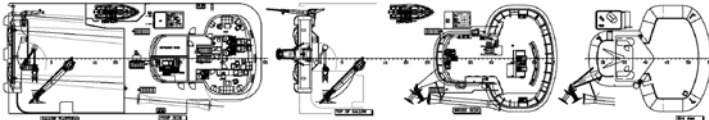
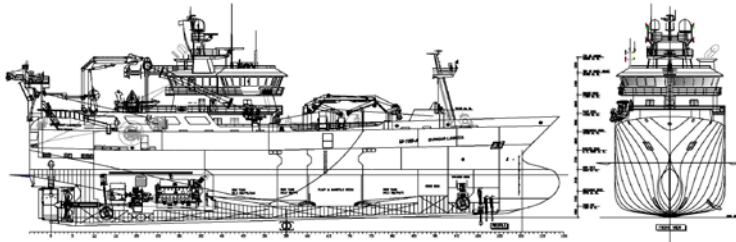
**Principal particulars**

Length o.a.:	74,80 m
Length p.p:	66,20 m
Breadth mid:	15,50 m
Depth to Main Deck:	6,80 m
Depth to Shelter Deck:	9,50 m
Scantling draught:	7,70 m
Class:	DNV +1A1, E0 Fishing Vessel

**Contact:**

Westcon Yards AS  
Jektevikvegen 45  
NO-5582 Ølensvåg, Norway  
Tel: +47 53 77 50 00  
Fax: +47 53 77 50 01  
E-mail: westcon@westcon.no

**www.westcon.no**



### Propulsion system

Main Engine: Bergen Diesel B33:45L8, 4800 kW  
 Reduction Gear: Flender GUCK 900  
 Propeller system: Kongsberg Controllable Pitch 94A1/4D-B/P/N-3800  
 Propeller nozzle: Kongsberg 3800x 0,45  
 Rudder: Kongsberg FM-P 2800X4400W/HEEL  
 Steering Gear: Kongsberg SR723 FCP  
 Thruster & Propulsion Control: Kongsberg Helocon X3

### Generators

Main generators: Cat C32 Tier3/ 994 bkW 1800 rpm  
 Harbour /Em. generator: Scania DI 13 75 M/Stamford HCM 534D2, 350 ekW  
 Shaft Generator: MarelliMotori MJRM 710MA6, 2700kW

### Side thrusters

Fwd: Kongsberg TT1650 AUX CP  
 Aft: Kongsberg TT1650 AUX CP

### Electronical equipment

Radar 1: Furuno FAR 2338S  
 Radar 2: Furuno FAR 2318  
 Echo sounder 1: Furuno FCV 1900  
 Echo sounder 2: Furuno DFF 3 Modul  
 Sonar 1: Furuno FSV 85  
 Sonar 2: Furuno FSV 25  
 NAV AID: Time Zero  
 Watch Alarm: BW 800  
 Camera: 4MP PS CMOS IP Dome camera  
 Power Supply: Anda Olsen APS7000IAS / APS-1  
 Satellite Compass: Simrad HS 80  
 Log: C168BB  
 GPS: Furuno GP170  
 AIS: Furuno FA170  
 ECDIS: Tecdis 2138B  
 VHF: Sailor 6222 DSC VHF (x2)  
 MF/HF: Sailor 6310 MF/HF 150W  
 UHF: DP 4401 AteX (x2)  
 Satellite TV: Seatel ST120  
 Satellite Communication: Sailor 6110 Mini-C GMDSS  
 Iridium Pilot Satellite Phone  
 Simrad GC80 Gyro  
 Simrad AP70 Autopilot  
 Imaginex TS337A  
 Hatteland Displays  
 Furuno NX 700B  
 Jotron Tron 60 GPS epirb  
 Jotron Sart20  
 Jotron TR-30

Navigation:  
 Autopilot:  
 Trawl System:  
 Monitors:  
 Emergency:  
 Epirb:  
 Dsart:  
 GMDSS VHF:

### Ship systems

FO separator: Alfa Laval P605  
 LO filter: CJCTM Fin Filter HDU 427/81 MZ-DE2H1P  
 Air Compressors: Sperre HL2/105A (x2)  
 Oily water separator: JOWA 3 SEP OWS 1 m<sup>3</sup>/h  
 Vent/AC-arrangement: AF Offshore AeronMollier  
 Fans: AF Offshore AeronMollier  
 Engine room firefighting: Novac 1230  
 Mob boat: Palfinger Fast Rescue Boat 610 90 HP  
 Life rafts: Viking SOLAS 16DK+E (x2)  
 Ballast monitoring system: Kongsberg - ACON  
 PMS: Kongsberg - ACON  
 Searchlights: Tranberg TEF 2650 2000W  
 Fire alarm: Consilium Salwico Cargo AE  
 Switchboard, main: Kongsberg 440/230V 60Hz,  
 Switchboard, emergency: Kongsberg 440/230V 60 Hz  
 RSW plant: FrioNordica 1200 kW (x2)  
 Vacuum pump system: Cflow

### Capacities

RSW-holds: 2298 m<sup>3</sup>  
 Fuel oil: 599 m<sup>3</sup>  
 Fresh water: 53 m<sup>3</sup>  
 Accommodation: 14 men

### Deck equipment

Net stacker crane: Triplex MacGregor NK-7500, 5,5t  
 Fish pump crane, gallow: Triplex MacGregor PK-25, 3,5t  
 Fish pump crane, fwd: Triplex MacGregor KN-60/3, 3,2t  
 Deck crane, fwd: Triplex MacGregor KN-60/4, 4t  
 Cork Line Stacker: Triplex MacGregor FLH-300  
 Ring Needle: Triplex MacGregor RN-85  
 Net Hauler winch: Triplex MacGregor 920/500, 25t  
 Aux. Winch (Flå): Triplex MacGregor SE-45, 5,75t  
 Fish pump: Z-Marine 18" (x2)  
 Aux. Mooring Winch (Flå): KM Brattvaag MX22011, 11t  
 Aux. Mooring Winch (Ørekall): KM Brattvaag LAKMX22012, 11,3t  
 Aux. Mooring Winch: KM Brattvaag MX22.008, 8t  
 Tail end winch (aft): KM Brattvaag MX132.048, 46t  
 Net drum winch (forward): KM Brattvaag MX132.074, 75t  
 Trawl winch: KM Brattvaag MX132.074 (x2), 75t  
 Net Sounder winch: KM Brattvaag UMX1270, 3,9t  
 Windlass for wire: KM Brattvaag GX63.036/ 10t  
 Purse Seine winch: KM Brattvaag LDMX13030 (x2), 30t  
 Capstan: KM Brattvaag CX12.005, 5t