

ELEVATION VIEW

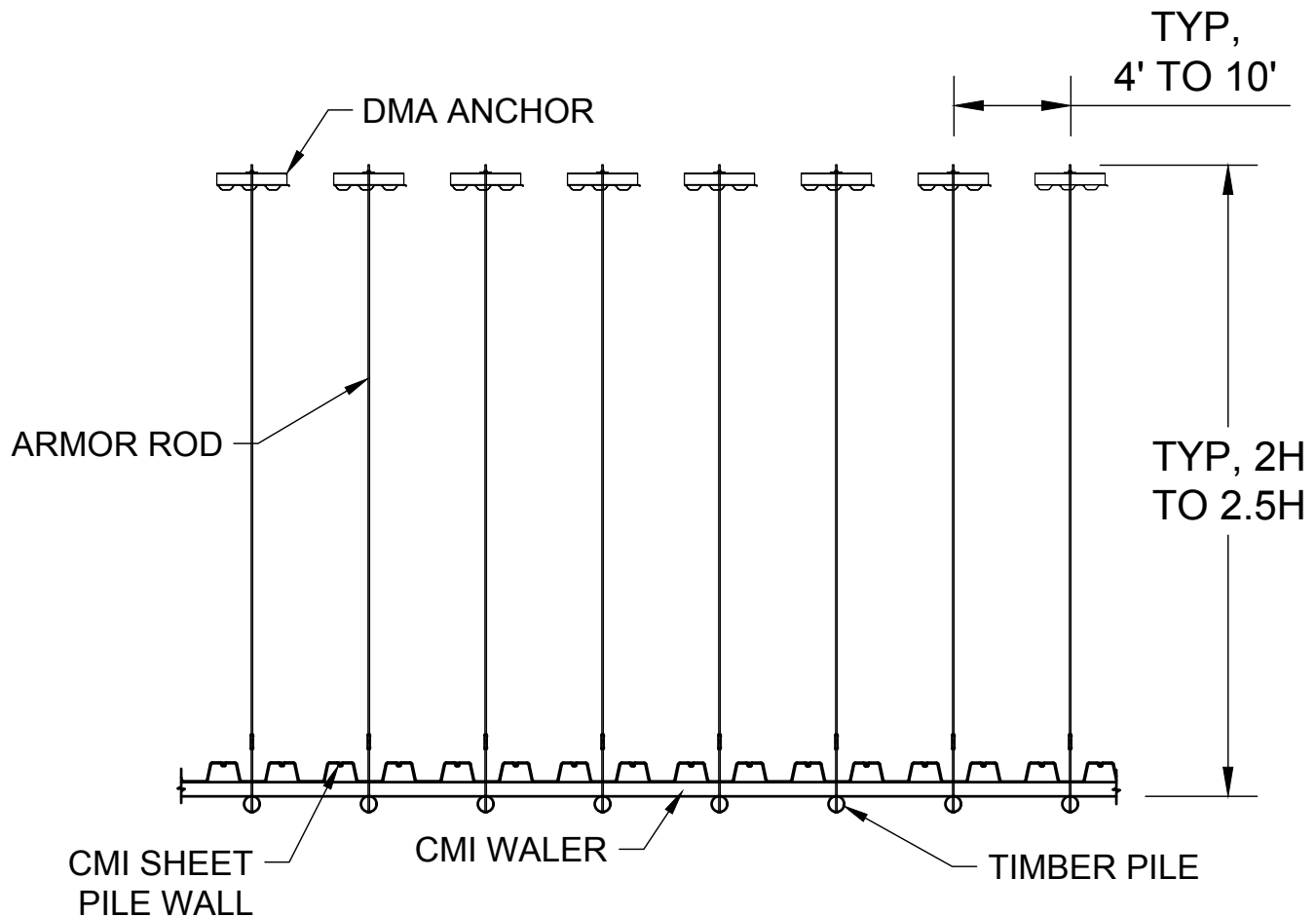
The configurations shown are considered typical and for budgetary purposes only. Please rely on your engineer for specific design recommendations. Because of the complexity of geotechnical loading calculations and the susceptibility to extreme change of soil loads with minor changes in local site conditions such as soil parameters, water levels, surcharge loads, etc., we strongly recommend the use of design professionals who are familiar with local wall construction to determine the required sheet piling and component capacities. The material contained within this drawing is not to be used for any project specific design.



605 Molly Lane, Suite 150, Woodstock, GA 30189
1-888-256-8857
info@cnilc.com | cnilc.com

ELEVATION VIEW

SIZE	DATE	FILE	REV
A	01/07/2016	NAVY STYLE SHEET PILE WALL	0
SCALE	N.T.S.	DRAWN VRP	SHEET 1 OF 3



PLAN VIEW

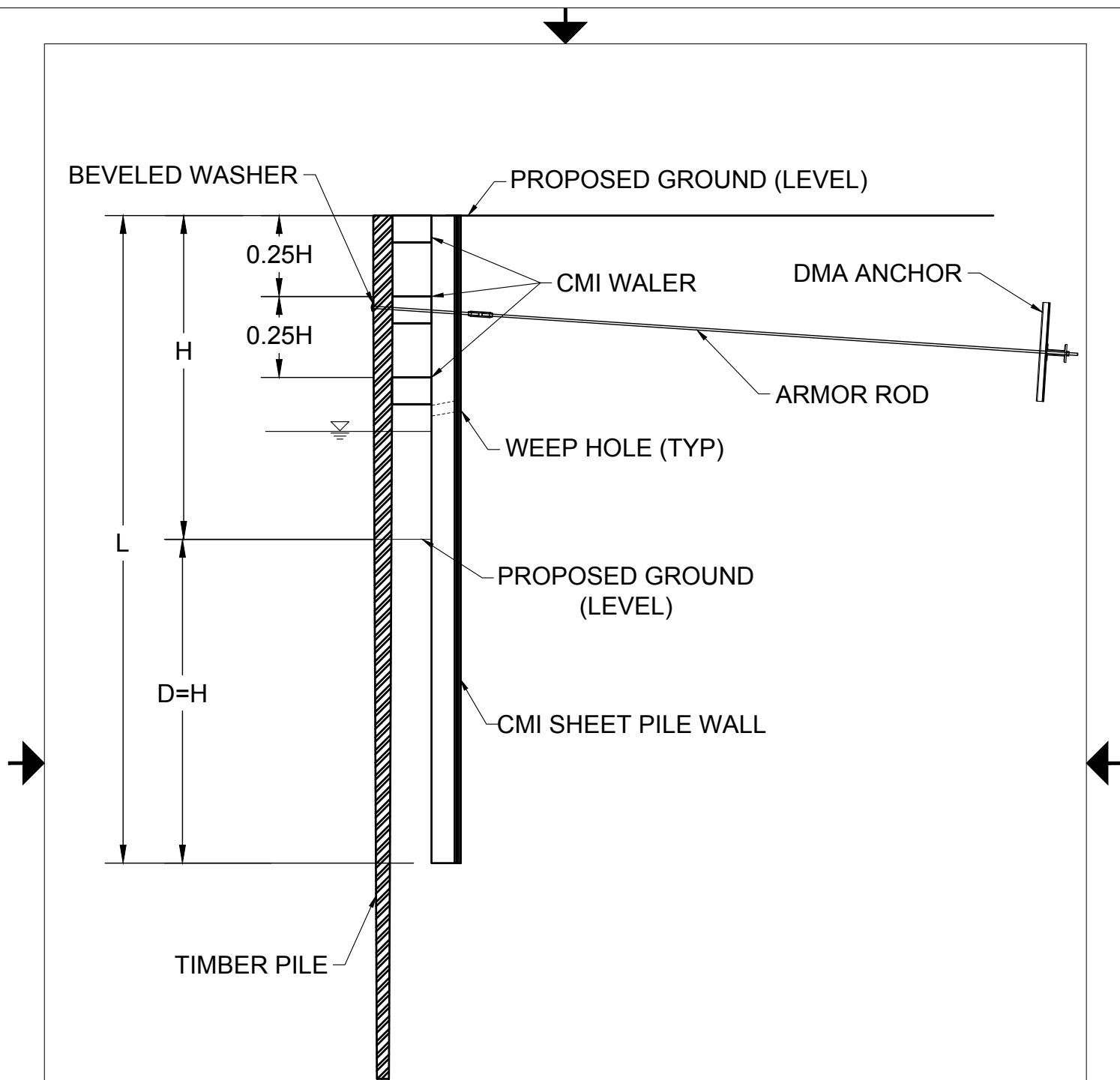
The configurations shown are considered typical and for budgetary purposes only. Please rely on your engineer for specific design recommendations. Because of the complexity of geotechnical loading calculations and the susceptibility to extreme change of soil loads with minor changes in local site conditions such as soil parameters, water levels, surcharge loads, etc., we strongly recommend the use of design professionals who are familiar with local wall construction to determine the required sheet piling and component capacities. The material contained within this drawing is not to be used for any project specific design.



605 Molly Lane, Suite 150, Woodstock, GA 30189
1-888-256-8857
info@cmilc.com | **cmilc.com**

PLAN VIEW

SIZE	DATE	FILE	REV
A	01/07/2016	NAVY STYLE SHEET PILE WALL	0
SCALE	N.T.S.	DRAWN VRP	SHEET 2 OF 3



TYPICAL CROSS-SECTION

The configurations shown are considered typical and for budgetary purposes only. Please rely on your engineer for specific design recommendations. Because of the complexity of geotechnical loading calculations and the susceptibility to extreme change of soil loads with minor changes in local site conditions such as soil parameters, water levels, surcharge loads, etc., we strongly recommend the use of design professionals who are familiar with local wall construction to determine the required sheet piling and component capacities. The material contained within this drawing is not to be used for any project specific design.



605 Molly Lane, Suite 150, Woodstock, GA 30189

1-888-256-8857

info@cmilc.com | **cmilc.com**

TYPICAL CROSS-SECTION

SIZE	DATE	FILE	REV
A	01/07/2016	NAVY STYLE SHEET PILE WALL	0
SCALE	N.T.S.	DRAWN VRP	SHEET 3 OF 3