



Boating to FISHERMAN'S COVE

Fisherman's Cove, Eastern Passage, NS, now has a floating dock and fixed dock section to provide direct access to its shops and dining establishments for pleasure boaters and water transport vessels.

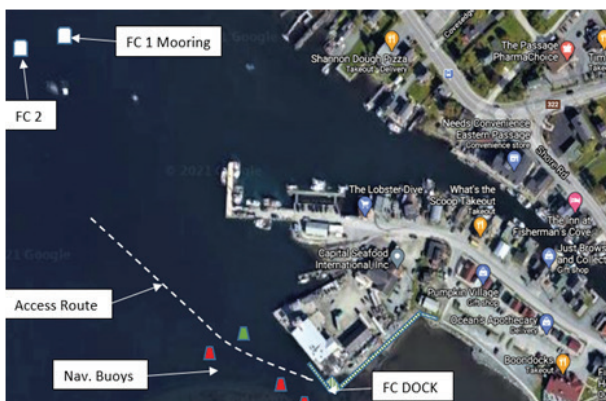
The Floating Dock and associated infrastructure were made possible by support from all three levels of government. It is

owned and operated by the Fisherman's Cove Development Association (FCDA). Its main purpose is to make Fisherman's Cove accessible to boaters. It should be noted that this dock is separate from the Government Wharf, which is intended exclusively for fishermen, and not appropriate for pleasure boaters.

USE OF THE FC DOCK IS DEPENDENT ON ADHERENCE TO THE FOLLOWING RULES:

- Shortstops to drop off and pick up passengers – no charge.
- Short term berthing to visit for dining/ shopping – no charge.
- Overnight stays at a set fee. Out of port boaters have priority. (BYC and DYC are considered out of port).
- Permanent dockage is not available at this dock.
- Boater's garbage may be placed in allocated containers.
- Discharge of bilge water or sewage is prohibited.
- Transfer of fuel to, from, or on the boat is prohibited.
- Two heavy moorings are available – no charge for a short visit, overnight rate applies.
- Boat owners & passengers to follow all posted safety signs & notices when on FCDA property.
- Coordinate your plans with FCDA staff and leave your contact information





For the local pleasure boater, Fisherman's Cove feels like that little journey away from the city without having to deal with possible adverse weather outside the mouth of the harbour. For someone who is going out on the ocean, this could be your overnight stop before proceeding further, provided space is available. For the out of port boater, this could be your first stop. For other visitors who don't have a boat, you may find water transport to bring you to the Cove and pick you up after your visit.



The above map provides some boater information. The upper left shows the location of the two Fisherman's Cove Buoys, clearly marked. When entering the dock, don't wander outside the area marked off by the red buoys. Be aware that the water in this area, at low tide, can be as shallow as 4 or 5ft. Deep draft sailboats are advised not to attempt to enter or exit the dock at low tides. Make use of one of the heavy-duty moorings and use your tender to come to the dock or arrange tender service from FC staff.

**FISHERMAN'S
COVE**

4 Government Wharf Rd.
Eastern Passage, NS, B3G 1M7
Office: 902-465-6093
Dock Cell: 902-410-9493
VHF Ch. 68
www.fishermanscove.ca

