

Viewpoint 1

Location: Interstate 390 Southbound, Town of Wayland, Steuben County

Coordinates: 42.52751° N, 77.55456° W

Distance Zone: Background

Landscape Similarity Zone: Transportation Corridor

Visually Sensitive Resource(s): Interstate 390



View looking southeast

Prattsburgh Wind Farm

Towns of Avoca, Cohocton, Howard, Prattsburgh, and Wheeler, Steuben County, New York

Visual Assessment Consultation

Attachment D

Viewpoint 2

Location: Interstate 390 Southbound, Town of Cohocton, Steuben County

Coordinates: 42.50932° N, 77.51610° W

Distance Zone: Middle Ground

Landscape Similarity Zone: Transportation Corridor

Visually Sensitive Resource(s): Interstate 390

Viewpoint Selected for
Simulation Development



View looking east



View looking southeast

Prattsburgh Wind Farm

Towns of Avoca, Cohocton, Howard, Prattsburgh, and Wheeler, Steuben County, New York

Visual Assessment Consultation

Attachment D

Viewpoint 3

Location: Interstate 390 Southbound, Town of Avoca, Steuben County

Coordinates: 42.45725° N, 77.48113° W

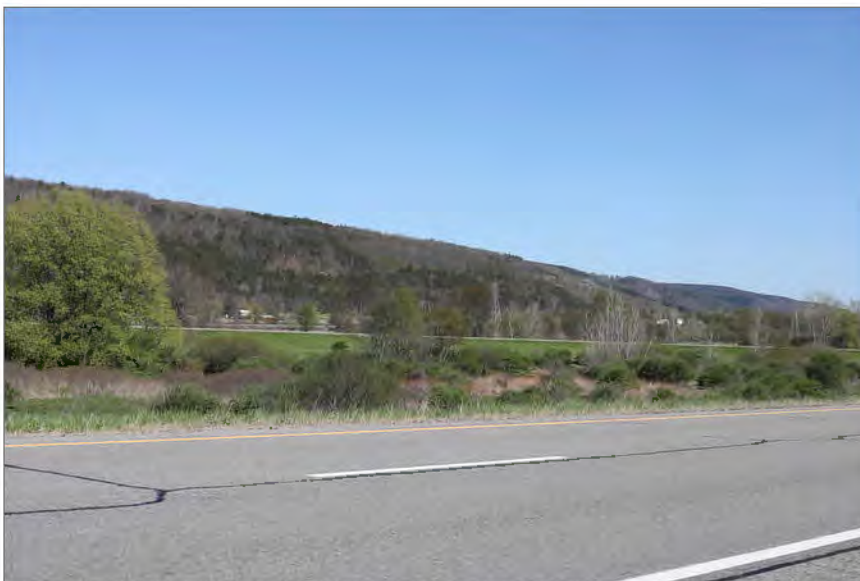
Distance Zone: Foreground

Landscape Similarity Zone: Transportation Corridor

Visually Sensitive Resource(s): Interstate 390



View looking east



View looking southeast

Prattsburgh Wind Farm

Towns of Avoca, Cohocton, Howard, Prattsburgh, and Wheeler, Steuben County, New York

Visual Assessment Consultation

Attachment D

Viewpoint 4

Location: Interstate 86 Westbound, Town of Avoca, Steuben County

Coordinates: 42.38546° N, 77.37588° W

Distance Zone: Background

Landscape Similarity Zone: Transportation Corridor

Visually Sensitive Resource(s): Interstate 390, Interstate 86



View looking west

Prattsburgh Wind Farm

Towns of Avoca, Cohocton, Howard, Prattsburgh, and Wheeler, Steuben County, New York

Visual Assessment Consultation

Attachment D

Viewpoint 5

Location: Interstate 86 Westbound, Town of Howard, Steuben County

Coordinates: 42.38137° N, 77.53535° W

Distance Zone: Foreground

Landscape Similarity Zone: Transportation Corridor

Visually Sensitive Resource(s): Interstate 86



View looking west

Prattsburgh Wind Farm

Towns of Avoca, Cohocton, Howard, Prattsburgh, and Wheeler, Steuben County, New York

Visual Assessment Consultation

Attachment D

Viewpoint 6

Location: Intersection of State Route 21 and Sawdust Road, Town of Wayland, Steuben County

Coordinates: 42.56883° N, 77.57611° W

Distance Zone: Background

Landscape Similarity Zone: Rural Valley

Visually Sensitive Resource(s): NYS Route 21



View looking east



View looking southeast



View looking south

Prattsburgh Wind Farm

Towns of Avoca, Cohocton, Howard, Prattsburgh, and Wheeler, Steuben County, New York

Visual Assessment Consultation

Attachment D

Viewpoint 7

Location: State Route 21, Town of Wayland, Steuben County

Coordinates: 42.57055° N, 77.54498° W

Distance Zone: Background

Landscape Similarity Zone: Rural Valley

Visually Sensitive Resource(s): NYS Route 21



View looking southeast



View Looking southeast

Prattsburgh Wind Farm

Towns of Avoca, Cohocton, Howard, Prattsburgh, and Wheeler, Steuben County, New York

Visual Assessment Consultation

Attachment D

Viewpoint 8

Location: State Route 21, Town of Cohocton, Steuben County

Coordinates: 42.56448° N, 77.49688° W

Distance Zone: Background

Landscape Similarity Zone: Rural Valley

Visually Sensitive Resource(s): NYS Route 21



View looking southeast

Prattsburgh Wind Farm

Towns of Avoca, Cohocton, Howard, Prattsburgh, and Wheeler, Steuben County, New York

Visual Assessment Consultation

Attachment D

Viewpoint 9

Location: State Route 21, Town of Cohocton, Steuben County

Coordinates: 42.56539° N, 77.49226° W

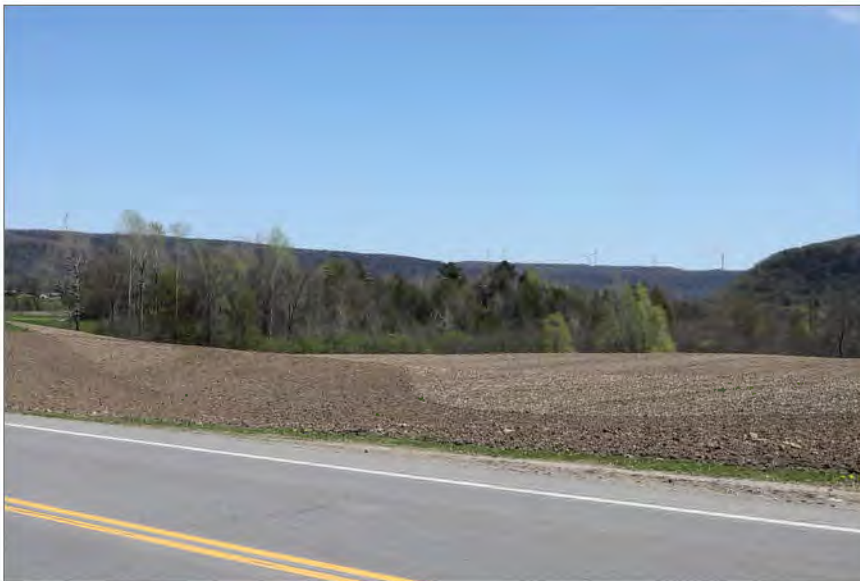
Distance Zone: Background

Landscape Similarity Zone: Rural Valley

Visually Sensitive Resource(s): NYS Route 21



View looking east



View looking southeast

Prattsburgh Wind Farm

Towns of Avoca, Cohocton, Howard, Prattsburgh, and Wheeler, Steuben County, New York

Visual Assessment Consultation

Attachment D

Viewpoint 10

Location: Intersection of State Route 21 and State Route 371, Town of Cohocton, Steuben County

Coordinates: 42.56146° N, 77.46481° W

Distance Zone: Background

Landscape Similarity Zone: Hamlet

Visually Sensitive Resource(s): NYS Route 21, NYS Route 371, Hamlet of North Cohocton



View Looking south

Prattsburgh Wind Farm

Towns of Avoca, Cohocton, Howard, Prattsburgh, and Wheeler, Steuben County, New York

Visual Assessment Consultation

Attachment D

Viewpoint 11

Location: State Route 21, Town of Cohocton, Steuben County

Coordinates: 42.56339° N, 77.46409° W

Distance Zone: Background

Landscape Similarity Zone: Rural Valley

Visually Sensitive Resource(s): NYS Route 21, Hamlet of North Cohocton



View looking south

Prattsburgh Wind Farm

Towns of Avoca, Cohocton, Howard, Prattsburgh, and Wheeler, Steuben County, New York

Visual Assessment Consultation

Attachment D

Viewpoint 12

Location: State Route 21, Town of Cohocton, Steuben County

Coordinates: 42.56715° N, 77.46088° W

Distance Zone: Background

Landscape Similarity Zone: Rural Valley

Visually Sensitive Resource(s): NYS Route 21



View looking south



View looking southwest

Prattsburgh Wind Farm

Towns of Avoca, Cohocton, Howard, Prattsburgh, and Wheeler, Steuben County, New York

Visual Assessment Consultation

Attachment D

Viewpoint 13

Location: State Route 371, Town of Cohocton, Steuben County

Coordinates: 42.55755° N, 77.46385° W

Distance Zone: Background

Landscape Similarity Zone: Hamlet

Visually Sensitive Resource(s): Quad County Snowmobile Trail, NYS Route 371, Hamlet of North Cohocton

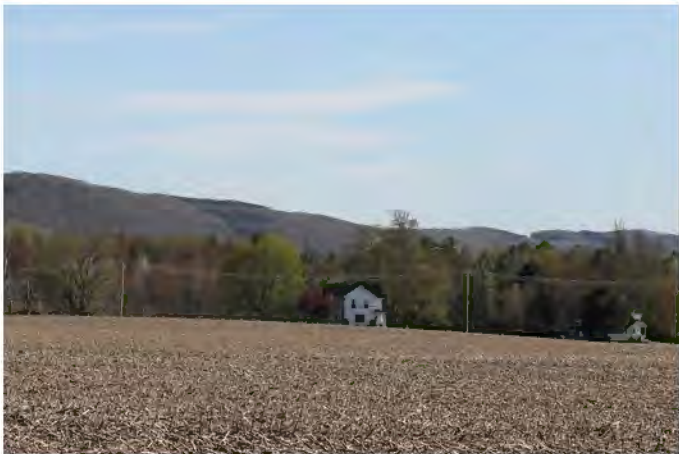
Viewpoint Selected for
Simulation Development



View looking east



View looking southeast



View looking southeast

Prattsburgh Wind Farm

Towns of Avoca, Cohocton, Howard, Prattsburgh, and Wheeler, Steuben County, New York

Visual Assessment Consultation

Attachment D

Viewpoint 14

Location: State Route 371, Town of Cohocton, Steuben County

Coordinates: 42.54185° N, 77.46155° W

Distance Zone: Middle Ground

Landscape Similarity Zone: Rural Valley

Visually Sensitive Resource(s): NYS Route 371



View looking south

Prattsburgh Wind Farm

Towns of Avoca, Cohocton, Howard, Prattsburgh, and Wheeler, Steuben County, New York

Visual Assessment Consultation

Attachment D

Viewpoint 15

Location: Intersection of State Route 371 and State Route 415, Town of Cohocton, Steuben County

Coordinates: 42.50055° N, 77.49354° W

Distance Zone: Middle Ground

Landscape Similarity Zone: City/Village

Visually Sensitive Resource(s): NYS Route 371, NYS Route 415, Village of Cohocton



View looking south

Prattsburgh Wind Farm

Towns of Avoca, Cohocton, Howard, Prattsburgh, and Wheeler, Steuben County, New York

Visual Assessment Consultation

Attachment D

Viewpoint 16

Location: State Route 415, Town of Wayland, Steuben County

Coordinates: 42.52073° N, 77.54253° W

Distance Zone: Background

Landscape Similarity Zone: Rural Valley

Visually Sensitive Resource(s): NYS Route 415



View looking east



View looking southeast

Prattsburgh Wind Farm

Towns of Avoca, Cohocton, Howard, Prattsburgh, and Wheeler, Steuben County, New York

Visual Assessment Consultation

Attachment D

Viewpoint 17

Location: State Route 415 near Larowe House, Town of Cohocton, Steuben County

Coordinates: 42.49830° N, 77.49447° W

Distance Zone: Middle Ground

Landscape Similarity Zone: City/Village

Visually Sensitive Resource(s): NYS Route 415, Village of Cohocton, Larowe House



View looking south

Prattsburgh Wind Farm

Towns of Avoca, Cohocton, Howard, Prattsburgh, and Wheeler, Steuben County, New York

Visual Assessment Consultation

Attachment D

Viewpoint 18

Location: State Route 415, Town of Cohocton, Steuben County

Coordinates: 42.49644° N, 77.49464° W

Distance Zone: Middle Ground

Landscape Similarity Zone: City/Village

Visually Sensitive Resource(s): NYS Route 415, Village of Cohocton



View looking south

Prattsburgh Wind Farm

Towns of Avoca, Cohocton, Howard, Prattsburgh, and Wheeler, Steuben County, New York

Visual Assessment Consultation

Attachment D

Viewpoint 19

Location: State Route 415, Town of Cohocton, Steuben County

Coordinates: 42.47841° N, 77.47937° W

Distance Zone: Foreground

Landscape Similarity Zone: Forest

Visually Sensitive Resource(s): NYS Route 415



View looking south



View looking southwest

Prattsburgh Wind Farm

Towns of Avoca, Cohocton, Howard, Prattsburgh, and Wheeler, Steuben County, New York

Visual Assessment Consultation

Attachment D

Viewpoint 20

Location: State Route 415, Town of Avoca, Steuben County

Coordinates: 42.45858° N, 77.47081° W

Distance Zone: Foreground

Landscape Similarity Zone: Rural Valley

Visually Sensitive Resource(s): NYS Route 415

Viewpoint Selected for
Simulation Development



View looking south



View looking southwest

Prattsburgh Wind Farm

Towns of Avoca, Cohocton, Howard, Prattsburgh, and Wheeler, Steuben County, New York

Visual Assessment Consultation

Attachment D

Viewpoint 21

Location: State Route 415, Town of Avoca, Steuben County

Coordinates: 42.44780° N, 77.46102° W

Distance Zone: Foreground

Landscape Similarity Zone: Hamlet

Visually Sensitive Resource(s): NYS Route 415, Hamlet of Wallace

Viewpoint Selected for
Simulation Development



View looking southwest



View looking west



View looking north

Prattsburgh Wind Farm

Towns of Avoca, Cohocton, Howard, Prattsburgh, and Wheeler, Steuben County, New York

Visual Assessment Consultation

Attachment D

Viewpoint 22

Location: State Route 415, Town of Avoca, Steuben County

Coordinates: 42.44782° N, 77.46081° W

Distance Zone: Foreground

Landscape Similarity Zone: Hamlet

Visually Sensitive Resource(s): NYS Route 415, Hamlet of Wallace



View Looking southwest



View looking west



View Looking north

Prattsburgh Wind Farm

Towns of Avoca, Cohocton, Howard, Prattsburgh, and Wheeler, Steuben County, New York

Visual Assessment Consultation

Attachment D

Viewpoint 23

Location: State Route 415, Town of Avoca, Steuben County

Coordinates: 42.44130° N, 77.45855° W

Distance Zone: Foreground

Landscape Similarity Zone: Hamlet

Visually Sensitive Resource(s): NYS Route 415, Hamlet of Wallace



View Looking west

Prattsburgh Wind Farm

Towns of Avoca, Cohocton, Howard, Prattsburgh, and Wheeler, Steuben County, New York

Visual Assessment Consultation

Attachment D

Viewpoint 24

Location: State Route 415, Town of Avoca, Steuben County

Coordinates: 42.39774° N, 77.41556° W

Distance Zone: Middle Ground

Landscape Similarity Zone: Rural Valley

Visually Sensitive Resource(s): NYS Route 415



View looking northwest



View looking north



View looking northeast



View looking northeast

Prattsburgh Wind Farm

Towns of Avoca, Cohocton, Howard, Prattsburgh, and Wheeler, Steuben County, New York

Visual Assessment Consultation

Attachment D

Viewpoint 25

Location: State Route 53, Town of Prattsburgh, Steuben County

Coordinates: 42.55476° N, 77.35367° W

Distance Zone: Middle Ground

Landscape Similarity Zone: Rural Upland

Visually Sensitive Resource(s): NYS Route 53

Viewpoint Selected for
Simulation Development



View looking southwest

Prattsburgh Wind Farm

Towns of Avoca, Cohocton, Howard, Prattsburgh, and Wheeler, Steuben County, New York

Visual Assessment Consultation

Attachment D

Viewpoint 26

Location: State Route 53, Town of Wheeler, Steuben County

Coordinates: 42.43364° N, 77.33007° W

Distance Zone: Middle Ground

Landscape Similarity Zone: Rural Valley

Visually Sensitive Resource(s): NYS Route 53



View looking northwest



View looking northwest

Prattsburgh Wind Farm

Towns of Avoca, Cohocton, Howard, Prattsburgh, and Wheeler, Steuben County, New York

Visual Assessment Consultation

Attachment D

Viewpoint 27

Location: State Route 53, Town of Wheeler, Steuben County

Coordinates: 42.43135° N, 77.33148° W

Distance Zone: Middle Ground

Landscape Similarity Zone: Hamlet

Visually Sensitive Resource(s): NYS Route 53, Hamlet of Wheeler



View looking west



View looking northwest

Prattsburgh Wind Farm

Towns of Avoca, Cohocton, Howard, Prattsburgh, and Wheeler, Steuben County, New York

Visual Assessment Consultation

Attachment D

Viewpoint 28

Location: State Route 470, Town of Bath, Steuben County

Coordinates: 42.32513° N, 77.28479° W

Distance Zone: Background

Landscape Similarity Zone: Rural Valley

Visually Sensitive Resource(s): NYS Route 415, State Bike Route 17



View looking northwest

Prattsburgh Wind Farm

Towns of Avoca, Cohocton, Howard, Prattsburgh, and Wheeler, Steuben County, New York

Visual Assessment Consultation

Attachment D

Viewpoint 29

Location: Intersection of County Route 33 and Fribolin Road, Town of South Bristol, Ontario County

Coordinates: 42.68441° N, 77.37568° W

Distance Zone: Background

Landscape Similarity Zone: Rural Valley

Visually Sensitive Resource(s): None Identified



View looking south

Prattsburgh Wind Farm

Towns of Avoca, Cohocton, Howard, Prattsburgh, and Wheeler, Steuben County, New York

Visual Assessment Consultation

Attachment D

Viewpoint 30

Location: Carolabarb Park, Town of South Bristol, Ontario County

Coordinates: 42.67211° N, 77.37305° W

Distance Zone: Background

Landscape Similarity Zone: Rural Valley

Visually Sensitive Resource(s): None Identified



View looking south

Prattsburgh Wind Farm

Towns of Avoca, Cohocton, Howard, Prattsburgh, and Wheeler, Steuben County, New York

Visual Assessment Consultation

Attachment D

Viewpoint 31

Location: Intersection of County Route 33 and Clement Road, Town of Naples, Ontario County

Coordinates: 42.66072° N, 77.42042° W

Distance Zone: Background

Landscape Similarity Zone: Rural Valley

Visually Sensitive Resource(s): Finger Lakes Trail



View looking south

Prattsburgh Wind Farm

Towns of Avoca, Cohocton, Howard, Prattsburgh, and Wheeler, Steuben County, New York

Visual Assessment Consultation

Attachment D

Viewpoint 32

Location: County Route 33, Town of Naples, Ontario County

Coordinates: 42.62773° N, 77.41199° W

Distance Zone: Background

Landscape Similarity Zone: Rural Valley

Visually Sensitive Resource(s): None Identified



View looking south

Prattsburgh Wind Farm

Towns of Avoca, Cohocton, Howard, Prattsburgh, and Wheeler, Steuben County, New York

Visual Assessment Consultation

Attachment D

Viewpoint 33

Location: County Route 35, Town of Italy, Yates County

Coordinates: 42.60038° N, 77.24503° W

Distance Zone: Background

Landscape Similarity Zone: Rural Upland

Visually Sensitive Resource(s): None Identified



View looking southwest



View Looking southwest

Prattsburgh Wind Farm

Towns of Avoca, Cohocton, Howard, Prattsburgh, and Wheeler, Steuben County, New York

Visual Assessment Consultation

Attachment D

Viewpoint 34

Location: County Route 122, Town of Prattsburgh, Steuben County

Coordinates: 42.55763° N, 77.26306° W

Distance Zone: Middle Ground

Landscape Similarity Zone: Forest

Visually Sensitive Resource(s): None Identified



View looking southwest

Prattsburgh Wind Farm

Towns of Avoca, Cohocton, Howard, Prattsburgh, and Wheeler, Steuben County, New York

Visual Assessment Consultation

Attachment D

Viewpoint 35

Location: Intersection of County Road 74 and Morgan Street, Town of Prattsburgh, Steuben County

Coordinates: 42.52227° N, 77.28488° W

Distance Zone: Middle Ground

Landscape Similarity Zone: Hamlet

Visually Sensitive Resource(s): Hamlet of Prattsburgh



View looking west

Prattsburgh Wind Farm

Towns of Avoca, Cohocton, Howard, Prattsburgh, and Wheeler, Steuben County, New York

Visual Assessment Consultation

Attachment D

Viewpoint 36

Location: County Route 35, Town of Cohocton, Steuben County

Coordinates: 42.52323° N, 77.41648° W

Distance Zone: Foreground

Landscape Similarity Zone: Rural Upland

Visually Sensitive Resource(s): None Identified



View looking east



View looking southeast



View looking south



View looking southwest

Prattsburgh Wind Farm

Towns of Avoca, Cohocton, Howard, Prattsburgh, and Wheeler, Steuben County, New York

Visual Assessment Consultation

Attachment D

Viewpoint 37

Location: County Route 121, Town of Cohocton, Steuben County

Coordinates: 42.49671° N, 77.51360° W

Distance Zone: Middle Ground

Landscape Similarity Zone: Rural Valley

Visually Sensitive Resource(s): None Identified

Viewpoint Selected for
Simulation Development



View looking northeast



View looking east



View looking southeast

Prattsburgh Wind Farm

Towns of Avoca, Cohocton, Howard, Prattsburgh, and Wheeler, Steuben County, New York

Visual Assessment Consultation

Attachment D

Viewpoint 38

Location: County Route 8, Town of Wheeler, Steuben County

Coordinates: 42.45282° N, 77.35674° W

Distance Zone: Near Foreground

Landscape Similarity Zone: Rural Upland

Visually Sensitive Resource(s): View from County Route 8 between Fritz Hill Road and Wagner Hill Road

Viewpoint Selected for
Simulation Development



View looking south



View looking west



View looking northwest



View Looking north

Prattsburgh Wind Farm

Towns of Avoca, Cohocton, Howard, Prattsburgh, and Wheeler, Steuben County, New York

Visual Assessment Consultation

Attachment D

Viewpoint 39

Location: County Route 8, Town of Wheeler, Steuben County

Coordinates: 42.44699° N, 77.35678° W

Distance Zone: Near Foreground

Landscape Similarity Zone: Rural Upland

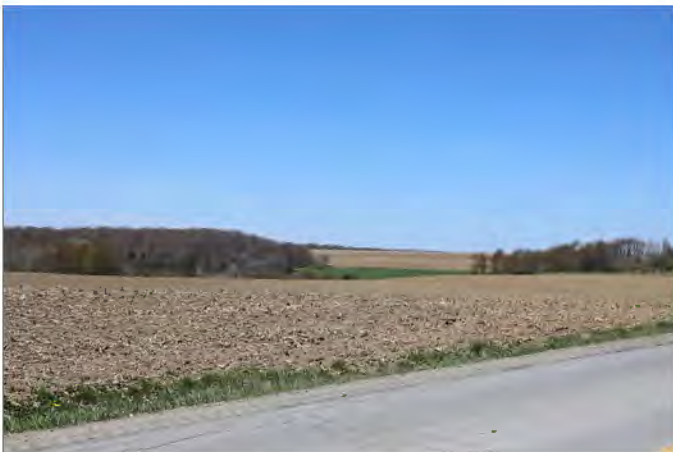
Visually Sensitive Resource(s): View from County Route 8 between Fritz Hill Road and Wagner Hill Road



View looking south



View looking southwest



View looking northwest



View looking north

Prattsburgh Wind Farm

Towns of Avoca, Cohocton, Howard, Prattsburgh, and Wheeler, Steuben County, New York

Visual Assessment Consultation

Attachment D

Viewpoint 40

Location: Intersection of County Route 54 and Jones Road, Town of Fremont, Steuben County

Coordinates: 42.39965° N, 77.57247° W

Distance Zone: Foreground

Landscape Similarity Zone: Rural Upland

Visually Sensitive Resource(s): None Identified

Viewpoint Selected for
Simulation Development



View looking northeast



View looking east



View looking southeast

Prattsburgh Wind Farm

Towns of Avoca, Cohocton, Howard, Prattsburgh, and Wheeler, Steuben County, New York

Visual Assessment Consultation

Attachment D

Viewpoint 41

Location: County Route 70, Town of Howard, Steuben County

Coordinates: 42.39547° N, 77.51209° W

Distance Zone: Near Foreground

Landscape Similarity Zone: Rural Upland

Visually Sensitive Resource(s): None Identified



View looking northwest



View looking north



View Looking southeast



View Looking west

Prattsburgh Wind Farm

Towns of Avoca, Cohocton, Howard, Prattsburgh, and Wheeler, Steuben County, New York

Visual Assessment Consultation

Attachment D

Viewpoint 42

Location: County Route 70, Town of Howard, Steuben County

Coordinates: 42.37192° N, 77.50810° W

Distance Zone: Foreground

Landscape Similarity Zone: Rural Upland

Visually Sensitive Resource(s): None Identified



View Looking northwest



View Looking north



View looking northeast

Prattsburgh Wind Farm

Towns of Avoca, Cohocton, Howard, Prattsburgh, and Wheeler, Steuben County, New York

Visual Assessment Consultation

Attachment D

Viewpoint 43

Location: County Route 70, Town of Howard, Steuben County

Coordinates: 42.36629° N, 77.50894° W

Distance Zone: Foreground

Landscape Similarity Zone: Transportation Corridor

Visually Sensitive Resource(s): Bath Snowflakes Snowmobile Trail, Interstate 86, NYS Route 962B



View looking northwest



View looking north



View looking northeast

Prattsburgh Wind Farm

Towns of Avoca, Cohocton, Howard, Prattsburgh, and Wheeler, Steuben County, New York

Visual Assessment Consultation

Attachment D

Viewpoint 44

Location: County Route 70A, Town of Howard, Steuben County

Coordinates: 42.37946° N, 77.53584° W

Distance Zone: Foreground

Landscape Similarity Zone: Rural Upland

Visually Sensitive Resource(s): State Bike Route 17



View looking west



View looking north



View looking east

Prattsburgh Wind Farm

Towns of Avoca, Cohocton, Howard, Prattsburgh, and Wheeler, Steuben County, New York

Visual Assessment Consultation

Attachment D

Viewpoint 45

Location: Intersection of County Route 70A and Miller Road, Town of Howard, Steuben County

Coordinates: 42.36486° N, 77.51884° W

Distance Zone: Foreground

Landscape Similarity Zone: Hamlet

Visually Sensitive Resource(s): State Bike Route 17, Hamlet of Howard

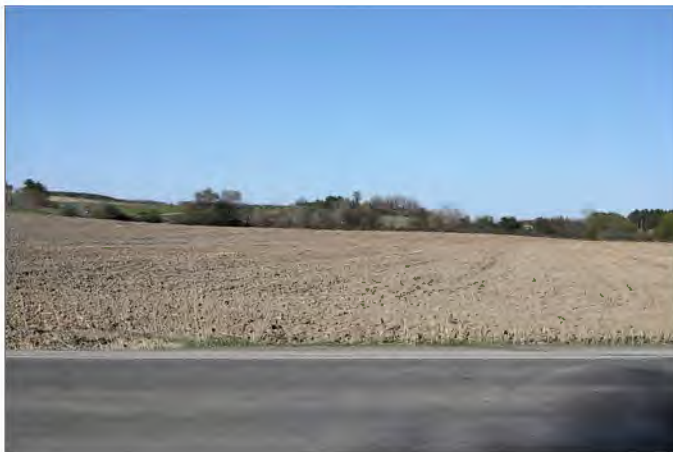
Viewpoint Selected for
Simulation Development



View looking northwest



View looking north



View looking northeast

Prattsburgh Wind Farm

Towns of Avoca, Cohocton, Howard, Prattsburgh, and Wheeler, Steuben County, New York

Visual Assessment Consultation

Attachment D

Viewpoint 46

Location: County Route 70A, Town of Howard, Steuben County

Coordinates: 42.36403° N, 77.50809° W

Distance Zone: Foreground

Landscape Similarity Zone: Hamlet

Visually Sensitive Resource(s): State Bike Route 17, Hamlet of Howard



View looking northeast



View looking northwest

Prattsburgh Wind Farm

Towns of Avoca, Cohocton, Howard, Prattsburgh, and Wheeler, Steuben County, New York

Visual Assessment Consultation

Attachment D

Viewpoint 47

Location: Intersection of County Route 113 and Longwell Road, Town of Urbana, Steuben County

Coordinates: 42.39355° N, 77.18814° W

Distance Zone: Background

Landscape Similarity Zone: Rural Upland

Visually Sensitive Resource(s): Finger Lakes Trail, North Country National Scenic Trail



View looking west



View Looking northwest



View looking northwest

Prattsburgh Wind Farm

Towns of Avoca, Cohocton, Howard, Prattsburgh, and Wheeler, Steuben County, New York

Visual Assessment Consultation

Attachment D

Viewpoint 48

Location: Carolabarb Park, Town of South Bristol, Ontario County

Coordinates: 42.67220° N, 77.37309° W

Distance Zone: Background

Landscape Similarity Zone: Rural Valley

Visually Sensitive Resource(s): None Identified



View looking south

Prattsburgh Wind Farm

Towns of Avoca, Cohocton, Howard, Prattsburgh, and Wheeler, Steuben County, New York

Visual Assessment Consultation

Attachment D

Viewpoint 49

Location: Hill Road near Clark Gully Trailhead, Town of Middlesex, Yates County

Coordinates: 42.67336° N, 77.33763° W

Distance Zone: Background

Landscape Similarity Zone: Forest

Visually Sensitive Resource(s): High Tor WMA



View looking southwest

Prattsburgh Wind Farm

Towns of Avoca, Cohocton, Howard, Prattsburgh, and Wheeler, Steuben County, New York

Visual Assessment Consultation

Attachment D

Viewpoint 50

Location: Drum Road, Town of Wayland, Steuben County

Coordinates: 42.51470° N, 77.55031° W

Distance Zone: Background

Landscape Similarity Zone: Rural Upland

Visually Sensitive Resource(s): None Identified



View looking east



View looking southeast

Prattsburgh Wind Farm

Towns of Avoca, Cohocton, Howard, Prattsburgh, and Wheeler, Steuben County, New York

Visual Assessment Consultation

Attachment D

Viewpoint 51

Location: Lake Road, Town of Wayland, Steuben County

Coordinates: 42.49993° N, 77.56532° W

Distance Zone: Background

Landscape Similarity Zone: Open Water

Visually Sensitive Resource(s): Loon Lake



View looking south

Prattsburgh Wind Farm

Towns of Avoca, Cohocton, Howard, Prattsburgh, and Wheeler, Steuben County, New York

Visual Assessment Consultation

Attachment D

Viewpoint 52

Location: Chapel Road, Town of Wayland, Steuben County

Coordinates: 42.48682° N, 77.56986° W

Distance Zone: Background

Landscape Similarity Zone: Rural Upland

Visually Sensitive Resource(s): None Identified



View looking southeast

Prattsburgh Wind Farm

Towns of Avoca, Cohocton, Howard, Prattsburgh, and Wheeler, Steuben County, New York

Visual Assessment Consultation

Attachment D

Viewpoint 53

Location: Davis Road, Town of Wayland, Steuben County

Coordinates: 42.45052° N, 77.56030° W

Distance Zone: Middle Ground

Landscape Similarity Zone: Rural Upland

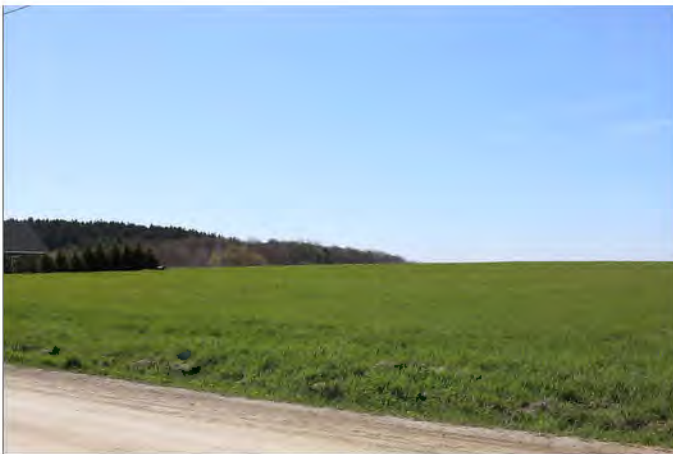
Visually Sensitive Resource(s): None Identified



View looking east



View looking east



View looking southeast

Prattsburgh Wind Farm

Towns of Avoca, Cohocton, Howard, Prattsburgh, and Wheeler, Steuben County, New York

Visual Assessment Consultation

Attachment D

Viewpoint 54

Location: Davis Road, Town of Fremont, Steuben County

Coordinates: 42.45044° N, 77.56014° W

Distance Zone: Middle Ground

Landscape Similarity Zone: Rural Upland

Visually Sensitive Resource(s): None Identified



View looking east



View looking east

Prattsburgh Wind Farm

Towns of Avoca, Cohocton, Howard, Prattsburgh, and Wheeler, Steuben County, New York

Visual Assessment Consultation

Attachment D

Viewpoint 55

Location: Wagner Road, Town of Dansville, Steuben County

Coordinates: 42.44658° N, 77.59886° W

Distance Zone: Middle Ground

Landscape Similarity Zone: Forest

Visually Sensitive Resource(s): Quad County Snowmobile Trail



View looking northeast



View looking east

Prattsburgh Wind Farm

Towns of Avoca, Cohocton, Howard, Prattsburgh, and Wheeler, Steuben County, New York

Visual Assessment Consultation

Attachment D

Viewpoint 56

Location: Hardee Hollow Road, Town of Cohocton, Steuben County

Coordinates: 42.57669° N, 77.49377° W

Distance Zone: Background

Landscape Similarity Zone: Rural Upland

Visually Sensitive Resource(s): Quad County Snowmobile Trail



View looking east



View looking southeast

Prattsburgh Wind Farm

Towns of Avoca, Cohocton, Howard, Prattsburgh, and Wheeler, Steuben County, New York

Visual Assessment Consultation

Attachment D

Viewpoint 57

Location: Hardee Hollow Road, Town of Cohocton, Steuben County

Coordinates: 42.57532° N, 77.48864° W

Distance Zone: Background

Landscape Similarity Zone: Forest

Visually Sensitive Resource(s): None Identified



View looking east



View looking southeast



View looking southeast

Prattsburgh Wind Farm

Towns of Avoca, Cohocton, Howard, Prattsburgh, and Wheeler, Steuben County, New York

Visual Assessment Consultation

Attachment D

Viewpoint 58

Location: Clearview Cemetery, Town of Cohocton, Steuben County

Coordinates: 42.56042° N, 77.47285° W

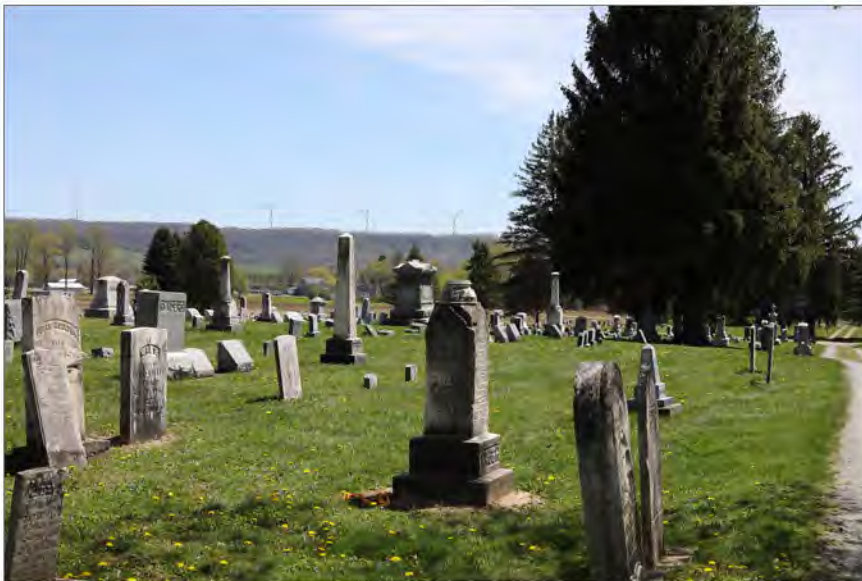
Distance Zone: Background

Landscape Similarity Zone: Hamlet

Visually Sensitive Resource(s): Hamlet of North Cohocton



View looking southeast



View looking south

Prattsburgh Wind Farm

Towns of Avoca, Cohocton, Howard, Prattsburgh, and Wheeler, Steuben County, New York

Visual Assessment Consultation

Attachment D

Viewpoint 59

Location: Atlanta Back Road, Town of Cohocton, Steuben County

Coordinates: 42.52227° N, 77.48328° W

Distance Zone: Middle Ground

Landscape Similarity Zone: Rural Valley

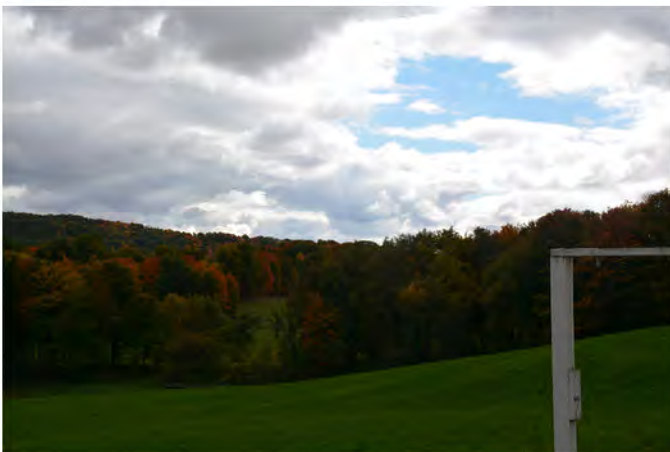
Visually Sensitive Resource(s): None Identified



View looking east



View looking southeast



View looking south

Prattsburgh Wind Farm

Towns of Avoca, Cohocton, Howard, Prattsburgh, and Wheeler, Steuben County, New York

Visual Assessment Consultation

Attachment D

Viewpoint 60

Location: Mattice Road, Town of Cohocton, Steuben County

Coordinates: 42.50879° N, 77.41943° W

Distance Zone: Near Foreground

Landscape Similarity Zone: Rural Upland

Visually Sensitive Resource(s): None Identified



View looking northeast



View looking southeast



View looking south



View looking southwest

Prattsburgh Wind Farm

Towns of Avoca, Cohocton, Howard, Prattsburgh, and Wheeler, Steuben County, New York

Visual Assessment Consultation

Attachment D

Viewpoint 61

Location: Intersection of Cayward Road and Rynders Road, Town of Cohocton, Steuben County

Coordinates: 42.50473° N, 77.44569° W

Distance Zone: Foreground

Landscape Similarity Zone: Rural Upland

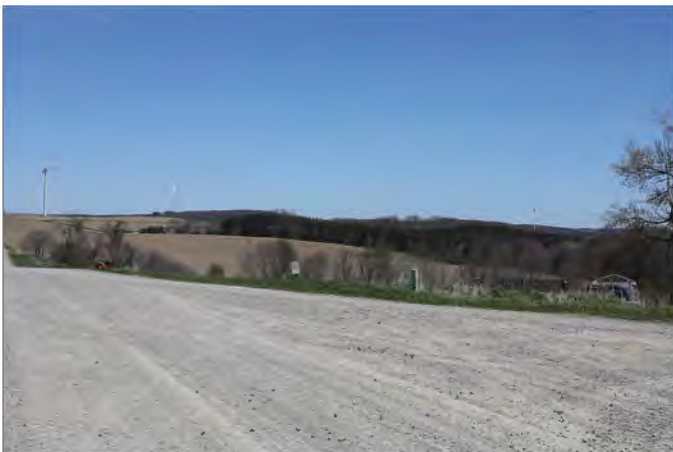
Visually Sensitive Resource(s): None Identified



View looking northeast



View looking east



View looking south



View looking southwest

Prattsburgh Wind Farm

Towns of Avoca, Cohocton, Howard, Prattsburgh, and Wheeler, Steuben County, New York

Visual Assessment Consultation

Attachment D

Viewpoint 62

Location: Cohocton Elementary School, Town of Cohocton, Steuben County

Coordinates: 42.49710° N, 77.49826° W

Distance Zone: Middle Ground

Landscape Similarity Zone: City/Village

Visually Sensitive Resource(s): Village of Cohocton, Cohocton Elementary School

Viewpoint Selected for
Simulation Development



View looking southeast



View looking south

Prattsburgh Wind Farm

Towns of Avoca, Cohocton, Howard, Prattsburgh, and Wheeler, Steuben County, New York

Visual Assessment Consultation

Attachment D

Viewpoint 63

Location: Cohocton Elementary School, Town of Cohocton, Steuben County

Coordinates: 42.49438° N, 77.49963° W

Distance Zone: Middle Ground

Landscape Similarity Zone: City/Village

Visually Sensitive Resource(s): Village of Cohocton, Cohocton Elementary School



View looking southeast



View looking south

Prattsburgh Wind Farm

Towns of Avoca, Cohocton, Howard, Prattsburgh, and Wheeler, Steuben County, New York

Visual Assessment Consultation

Attachment D

Viewpoint 64

Location: Interstate 390 Scenic Overlook, Town of Cohocton, Steuben County

Coordinates: 42.47626° N, 77.49377° W

Distance Zone: Middle Ground

Landscape Similarity Zone: Rural Valley

Visually Sensitive Resource(s): None Identified



View looking east



View looking southeast

Prattsburgh Wind Farm

Towns of Avoca, Cohocton, Howard, Prattsburgh, and Wheeler, Steuben County, New York

Visual Assessment Consultation

Attachment D

Viewpoint 65

Location: Intersection of Potter Hill Road and Loveland Road, Town of Cohocton, Steuben County

Coordinates: 42.46367° N, 77.53513° W

Distance Zone: Middle Ground

Landscape Similarity Zone: Rural Upland

Visually Sensitive Resource(s): None Identified

Viewpoint Selected for
Simulation Development



View looking northeast



View looking east



View looking southeast



View looking south

Prattsburgh Wind Farm

Towns of Avoca, Cohocton, Howard, Prattsburgh, and Wheeler, Steuben County, New York

Visual Assessment Consultation

Attachment D

Viewpoint 66

Location: Wentworth Road, Town of Cohocton, Steuben County

Coordinates: 42.46165° N, 77.48354° W

Distance Zone: Foreground

Landscape Similarity Zone: Transportation Corridor

Visually Sensitive Resource(s): Interstate 390



View looking northeast



View looking east



View Looking south



View looking southwest

Prattsburgh Wind Farm

Towns of Avoca, Cohocton, Howard, Prattsburgh, and Wheeler, Steuben County, New York

Visual Assessment Consultation

Attachment D

Viewpoint 67

Location: Cook School Road, Town of Prattsburgh, Steuben County

Coordinates: 42.54434° N, 77.32635° W

Distance Zone: Foreground

Landscape Similarity Zone: Forest

Visually Sensitive Resource(s): None Identified



View looking south



View looking southwest

Prattsburgh Wind Farm

Towns of Avoca, Cohocton, Howard, Prattsburgh, and Wheeler, Steuben County, New York

Visual Assessment Consultation

Attachment D

Viewpoint 68

Location: Cook School Road, Town of Prattsburgh, Steuben County

Coordinates: 42.54434° N, 77.32277° W

Distance Zone: Foreground

Landscape Similarity Zone: Rural Upland

Visually Sensitive Resource(s): None Identified



View looking east



View looking southeast

Prattsburgh Wind Farm

Towns of Avoca, Cohocton, Howard, Prattsburgh, and Wheeler, Steuben County, New York

Visual Assessment Consultation

Attachment D

Viewpoint 69

Location: Prattsburgh Village Square Park, Town of Prattsburgh, Steuben County

Coordinates: 42.52247° N, 77.28817° W

Distance Zone: Middle Ground

Landscape Similarity Zone: Hamlet

Visually Sensitive Resource(s): Hamlet of Prattsburgh



View looking northwest

Prattsburgh Wind Farm

Towns of Avoca, Cohocton, Howard, Prattsburgh, and Wheeler, Steuben County, New York

Visual Assessment Consultation

Attachment D

Viewpoint 70

Location: Howe Street, Town of Prattsburgh, Steuben County

Coordinates: 42.52334° N, 77.28385° W

Distance Zone: Middle Ground

Landscape Similarity Zone: Hamlet

Visually Sensitive Resource(s): Hamlet of Prattsburgh



View looking west

Prattsburgh Wind Farm

Towns of Avoca, Cohocton, Howard, Prattsburgh, and Wheeler, Steuben County, New York

Visual Assessment Consultation

Attachment D

Viewpoint 71

Location: Butts Road, Town of Prattsburgh, Steuben County

Coordinates: 42.51521° N, 77.33766° W

Distance Zone: Foreground

Landscape Similarity Zone: Forest

Visually Sensitive Resource(s): None Identified



View looking south



View looking southwest



View looking west

Prattsburgh Wind Farm

Towns of Avoca, Cohocton, Howard, Prattsburgh, and Wheeler, Steuben County, New York

Visual Assessment Consultation

Attachment D

Viewpoint 72

Location: Intersection of Mattoon Road and Cayward Road, Town of Prattsburgh, Steuben County

Coordinates: 42.50772° N, 77.32227° W

Distance Zone: Foreground

Landscape Similarity Zone: Rural Upland

Visually Sensitive Resource(s): View from Matton Rd at Cayward Road Looking SW



View looking west



View looking northwest

Prattsburgh Wind Farm

Towns of Avoca, Cohocton, Howard, Prattsburgh, and Wheeler, Steuben County, New York

Visual Assessment Consultation

Attachment D

Viewpoint 73

Location: Mattoon Road, Town of Prattsburgh, Steuben County

Coordinates: 42.50328° N, 77.32695° W

Distance Zone: Foreground

Landscape Similarity Zone: Rural Upland

Visually Sensitive Resource(s): None Identified



View looking southwest



View looking southwest



View Looking west



View Looking northwest

Prattsburgh Wind Farm

Towns of Avoca, Cohocton, Howard, Prattsburgh, and Wheeler, Steuben County, New York

Visual Assessment Consultation

Attachment D

Viewpoint 74

Location: Allis Road, Town of Prattsburgh, Steuben County

Coordinates: 42.49657° N, 77.39358° W

Distance Zone: Foreground

Landscape Similarity Zone: Rural Upland

Visually Sensitive Resource(s): None Identified



View looking east



View Looking southwest



View looking west



View looking northwest

Prattsburgh Wind Farm

Towns of Avoca, Cohocton, Howard, Prattsburgh, and Wheeler, Steuben County, New York

Visual Assessment Consultation

Attachment D

Viewpoint 75

Location: Wraight Road, Town of Prattsburgh, Steuben County

Coordinates: 42.50034° N, 77.35643° W

Distance Zone: Near Foreground

Landscape Similarity Zone: Rural Upland

Visually Sensitive Resource(s): None Identified



View looking south



View Looking southwest



View looking northeast

Prattsburgh Wind Farm

Towns of Avoca, Cohocton, Howard, Prattsburgh, and Wheeler, Steuben County, New York

Visual Assessment Consultation

Attachment D

Viewpoint 76

Location: Wraight Road, Town of Prattsburgh, Steuben County

Coordinates: 42.50040° N, 77.35621° W

Distance Zone: Near Foreground

Landscape Similarity Zone: Rural Upland

Visually Sensitive Resource(s): None Identified

Viewpoint Selected for
Simulation Development



View looking south



View looking southwest



View looking west



View looking northeast

Prattsburgh Wind Farm

Towns of Avoca, Cohocton, Howard, Prattsburgh, and Wheeler, Steuben County, New York

Visual Assessment Consultation

Attachment D

Viewpoint 77

Location: Wraight Road, Town of Prattsburgh, Steuben County

Coordinates: 42.50035° N, 77.34870° W

Distance Zone: Near Foreground

Landscape Similarity Zone: Rural Upland

Visually Sensitive Resource(s): None Identified



View Looking southwest



View looking west



View looking northeast



View looking north

Prattsburgh Wind Farm

Towns of Avoca, Cohocton, Howard, Prattsburgh, and Wheeler, Steuben County, New York

Visual Assessment Consultation

Attachment D

Viewpoint 78

Location: Armstrong Road, Town of Pulteney, Steuben County

Coordinates: 42.54044° N, 77.23670° W

Distance Zone: Background

Landscape Similarity Zone: Forest

Visually Sensitive Resource(s): None Identified



View looking southwest



View looking west

Prattsburgh Wind Farm

Towns of Avoca, Cohocton, Howard, Prattsburgh, and Wheeler, Steuben County, New York

Visual Assessment Consultation

Attachment D

Viewpoint 79

Location: Skyline Drive, Town of Jerusalem, Yates County

Coordinates: 42.52418° N, 77.13131° W

Distance Zone: Background

Landscape Similarity Zone: Rural Valley

Visually Sensitive Resource(s): None Identified



View looking southwest



View looking west

Prattsburgh Wind Farm

Towns of Avoca, Cohocton, Howard, Prattsburgh, and Wheeler, Steuben County, New York

Visual Assessment Consultation

Attachment D

Viewpoint 80

Location: Olmstead Hill Road, Town of Wheeler, Steuben County

Coordinates: 42.47588° N, 77.42176° W

Distance Zone: Near Foreground

Landscape Similarity Zone: Rural Upland

Visually Sensitive Resource(s): None Identified



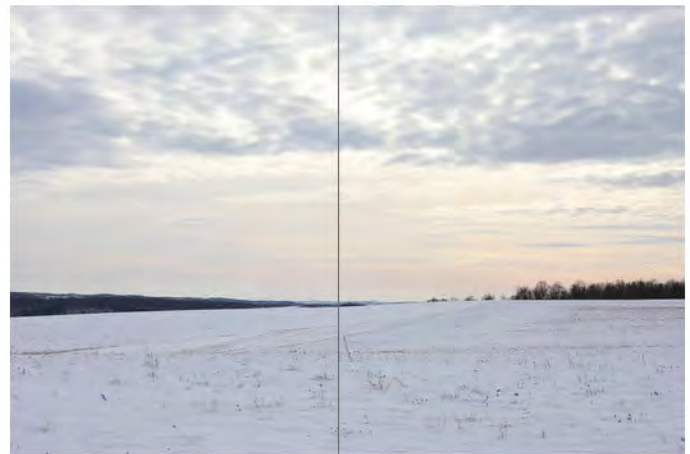
View looking northwest



View looking northeast



View looking southeast



View looking southwest

Prattsburgh Wind Farm

Towns of Avoca, Cohocton, Howard, Prattsburgh, and Wheeler, Steuben County, New York

Visual Assessment Consultation

Attachment D

Viewpoint 81

Location: Zimmer Road, Town of Wheeler, Steuben County

Coordinates: 42.45636° N, 77.39343° W

Distance Zone: Foreground

Landscape Similarity Zone: Rural Upland

Visually Sensitive Resource(s): None Identified



View looking southwest



View looking west



View looking north

Prattsburgh Wind Farm

Towns of Avoca, Cohocton, Howard, Prattsburgh, and Wheeler, Steuben County, New York

Visual Assessment Consultation

Attachment D

Viewpoint 82

Location: Intersection of Two Rod Road and Van Ness Road, Town of Urbana, Steuben County

Coordinates: 42.43113° N, 77.25283° W

Distance Zone: Background

Landscape Similarity Zone: Rural Upland

Visually Sensitive Resource(s): None Identified



View looking southwest



View looking west



View looking northwest

Prattsburgh Wind Farm

Towns of Avoca, Cohocton, Howard, Prattsburgh, and Wheeler, Steuben County, New York

Visual Assessment Consultation

Attachment D

Viewpoint 83

Location: Canfield Road, Town of Fremont, Steuben County

Coordinates: 42.41475° N, 77.58319° W

Distance Zone: Middle Ground

Landscape Similarity Zone: Rural Upland

Visually Sensitive Resource(s): None Identified



View looking northeast



View looking east



View looking southeast

Prattsburgh Wind Farm

Towns of Avoca, Cohocton, Howard, Prattsburgh, and Wheeler, Steuben County, New York

Visual Assessment Consultation

Attachment D

Viewpoint 84

Location: Russell Road, Town of Fremont, Steuben County

Coordinates: 42.35275° N, 77.57784° W

Distance Zone: Middle Ground

Landscape Similarity Zone: Rural Upland

Visually Sensitive Resource(s): None Identified



View looking northeast



View looking northeast

Prattsburgh Wind Farm

Towns of Avoca, Cohocton, Howard, Prattsburgh, and Wheeler, Steuben County, New York

Visual Assessment Consultation

Attachment D

Viewpoint 85

Location: Waterbury Hill Road, Town of Avoca, Steuben County

Coordinates: 42.43879° N, 77.48477° W

Distance Zone: Near Foreground

Landscape Similarity Zone: Rural Upland

Visually Sensitive Resource(s): None Identified



View looking south



View looking southwest



View looking west



View looking northwest

Prattsburgh Wind Farm

Towns of Avoca, Cohocton, Howard, Prattsburgh, and Wheeler, Steuben County, New York

Visual Assessment Consultation

Attachment D

Viewpoint 86

Location: Cohocton River Public Fishing Access Location, Town of Avoca, Steuben County

Coordinates: 42.43734° N, 77.45734° W

Distance Zone: Middle Ground

Landscape Similarity Zone: Rural Valley

Visually Sensitive Resource(s): Cohocton River, Cohocton River Public Fishing Access



View looking west

Prattsburgh Wind Farm

Towns of Avoca, Cohocton, Howard, Prattsburgh, and Wheeler, Steuben County, New York

Visual Assessment Consultation

Attachment D

Viewpoint 87

Location: Clymo Road, Town of Avoca, Steuben County

Coordinates: 42.42044° N, 77.50300° W

Distance Zone: Near Foreground

Landscape Similarity Zone: Rural Upland

Visually Sensitive Resource(s): None Identified



View looking northeast



View looking east



View looking south



View looking southwest

Prattsburgh Wind Farm

Towns of Avoca, Cohocton, Howard, Prattsburgh, and Wheeler, Steuben County, New York

Visual Assessment Consultation

Attachment D

Viewpoint 88

Location: Jacobs Ladder Cemetery, Town of Avoca, Steuben County

Coordinates: 42.41460° N, 77.43922° W

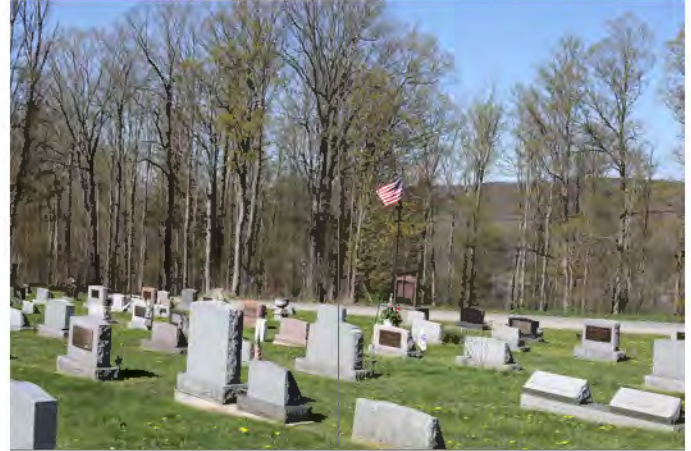
Distance Zone: Middle Ground

Landscape Similarity Zone: Rural Valley

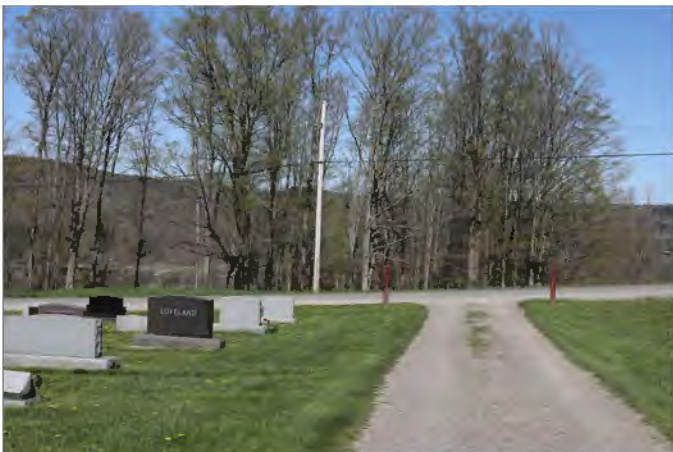
Visually Sensitive Resource(s): View from Jacob's Ladder Cemetery in Avoca



View looking north



View looking northeast



View looking east

Prattsburgh Wind Farm

Towns of Avoca, Cohocton, Howard, Prattsburgh, and Wheeler, Steuben County, New York

Visual Assessment Consultation

Attachment D

Viewpoint 89

Location: Main Street, Town of Avoca, Steuben County

Coordinates: 42.41392° N, 77.42267° W

Distance Zone: Middle Ground

Landscape Similarity Zone: City/Village

Visually Sensitive Resource(s): Village of Avoca



View looking west



View looking northwest



View looking north

Prattsburgh Wind Farm

Towns of Avoca, Cohocton, Howard, Prattsburgh, and Wheeler, Steuben County, New York

Visual Assessment Consultation

Attachment D

Viewpoint 90

Location: Hees Park, Town of Avoca, Steuben County

Coordinates: 42.41069° N, 77.42539° W

Distance Zone: Middle Ground

Landscape Similarity Zone: City/Village

Visually Sensitive Resource(s): NYS Route 415, Village of Avoca, Hees Park



View looking north

Prattsburgh Wind Farm

Towns of Avoca, Cohocton, Howard, Prattsburgh, and Wheeler, Steuben County, New York

Visual Assessment Consultation

Attachment D

Viewpoint 91

Location: Main Street, Town of Avoca, Steuben County

Coordinates: 42.40715° N, 77.42113° W

Distance Zone: Middle Ground

Landscape Similarity Zone: City/Village

Visually Sensitive Resource(s): Village of Avoca



View looking west



View looking northwest



View looking north

Prattsburgh Wind Farm

Towns of Avoca, Cohocton, Howard, Prattsburgh, and Wheeler, Steuben County, New York

Visual Assessment Consultation

Attachment D

Viewpoint 92

Location: Main Street, Town of Avoca, Steuben County

Coordinates: 42.40074° N, 77.41951° W

Distance Zone: Middle Ground

Landscape Similarity Zone: City/Village

Visually Sensitive Resource(s): NYS Route 415, Village of Avoca

Viewpoint Selected for
Simulation Development



View looking north

Prattsburgh Wind Farm

Towns of Avoca, Cohocton, Howard, Prattsburgh, and Wheeler, Steuben County, New York

Visual Assessment Consultation

Attachment D

Viewpoint 93

Location: Main Street, Town of Avoca, Steuben County

Coordinates: 42.40046° N, 77.41930° W

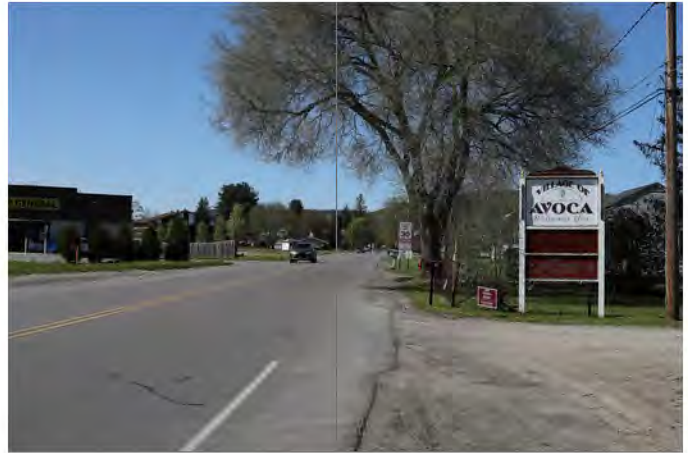
Distance Zone: Middle Ground

Landscape Similarity Zone: City/Village

Visually Sensitive Resource(s): NYS Route 415, Village of Avoca



View looking northwest



View looking north



View looking northeast

Prattsburgh Wind Farm

Towns of Avoca, Cohocton, Howard, Prattsburgh, and Wheeler, Steuben County, New York

Visual Assessment Consultation

Attachment D

Viewpoint 94

Location: Jacobs Ladder Road, Town of Avoca, Steuben County

Coordinates: 42.40182° N, 77.44369° W

Distance Zone: Middle Ground

Landscape Similarity Zone: Rural Upland

Visually Sensitive Resource(s): None Identified



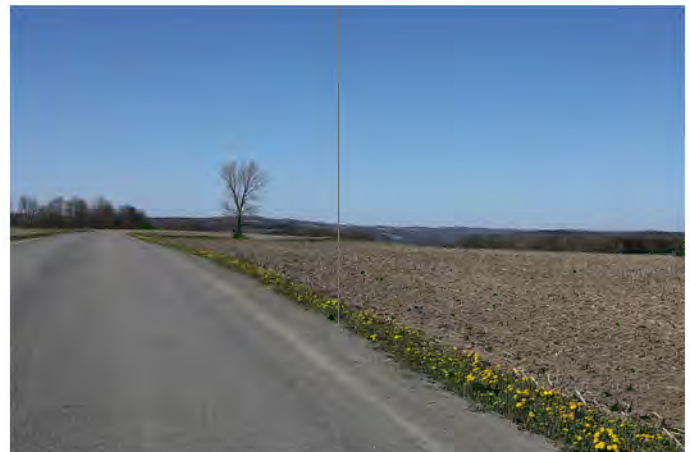
View looking southwest



View looking northwest



View looking north



View looking north

Prattsburgh Wind Farm

Towns of Avoca, Cohocton, Howard, Prattsburgh, and Wheeler, Steuben County, New York

Visual Assessment Consultation

Attachment D

Viewpoint 95

Location: Michigan Hollow Road, Town of Avoca, Steuben County

Coordinates: 42.40095° N, 77.40584° W

Distance Zone: Middle Ground

Landscape Similarity Zone: Transportation Corridor

Visually Sensitive Resource(s): Interstate 390, NYS Route 961J



View looking northwest



View looking north

Prattsburgh Wind Farm

Towns of Avoca, Cohocton, Howard, Prattsburgh, and Wheeler, Steuben County, New York

Visual Assessment Consultation

Attachment D

Viewpoint 96

Location: Baueter Road near Loucks Pond, Town of Avoca, Steuben County

Coordinates: 42.39210° N, 77.44279° W

Distance Zone: Middle Ground

Landscape Similarity Zone: Open Water

Visually Sensitive Resource(s): Loucks Pond



View looking northeast

Prattsburgh Wind Farm

Towns of Avoca, Cohocton, Howard, Prattsburgh, and Wheeler, Steuben County, New York

Visual Assessment Consultation

Attachment D

Viewpoint 97

Location: Smith Pond Road, Town of Avoca, Steuben County

Coordinates: 42.39046° N, 77.46728° W

Distance Zone: Foreground

Landscape Similarity Zone: Open Water

Visually Sensitive Resource(s): Bath Snowflakes Snowmobile Trail

Viewpoint Selected for
Simulation Development



View looking southwest



View looking west



View looking northwest

Prattsburgh Wind Farm

Towns of Avoca, Cohocton, Howard, Prattsburgh, and Wheeler, Steuben County, New York

Visual Assessment Consultation

Attachment D

Viewpoint 98

Location: Loucks Pond Road, Town of Avoca, Steuben County

Coordinates: 42.38629° N, 77.45521° W

Distance Zone: Middle Ground

Landscape Similarity Zone: Rural Upland

Visually Sensitive Resource(s): View from road at 7609 Loucks Pond Road

Viewpoint Selected for
Simulation Development



View looking west



View looking northwest



View looking north

Prattsburgh Wind Farm

Towns of Avoca, Cohocton, Howard, Prattsburgh, and Wheeler, Steuben County, New York

Visual Assessment Consultation

Attachment D

Viewpoint 99

Location: Parker Road, Town of Howard, Steuben County

Coordinates: 42.42050° N, 77.52728° W

Distance Zone: Foreground

Landscape Similarity Zone: Rural Upland

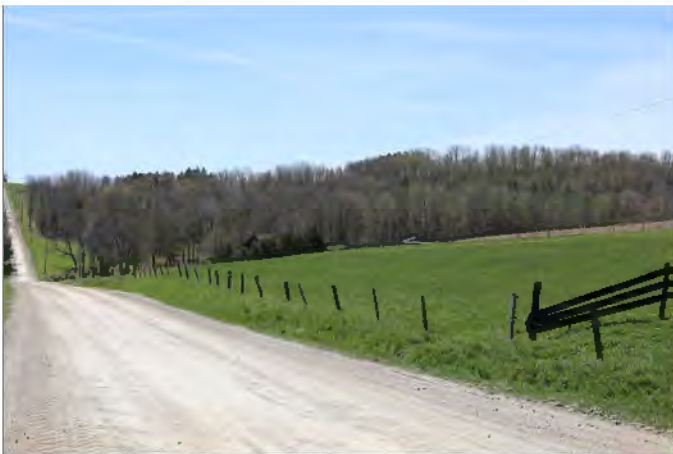
Visually Sensitive Resource(s): None Identified



View looking northeast



View looking southeast



View looking south



View looking west

Prattsburgh Wind Farm

Towns of Avoca, Cohocton, Howard, Prattsburgh, and Wheeler, Steuben County, New York

Visual Assessment Consultation

Attachment D

Viewpoint 100

Location: Smith Pond Road, Town of Howard, Steuben County

Coordinates: 42.39063° N, 77.47103° W

Distance Zone: Foreground

Landscape Similarity Zone: Open Water

Visually Sensitive Resource(s): Smith Pond



View looking west



View looking west

Prattsburgh Wind Farm

Towns of Avoca, Cohocton, Howard, Prattsburgh, and Wheeler, Steuben County, New York

Visual Assessment Consultation

Attachment D

Viewpoint 101

Location: Lyke Road, Town of Howard, Steuben County

Coordinates: 42.38246° N, 77.49527° W

Distance Zone: Near Foreground

Landscape Similarity Zone: Rural Upland

Visually Sensitive Resource(s): None Identified



View looking west



View looking northwest



View looking north



View looking northeast

Prattsburgh Wind Farm

Towns of Avoca, Cohocton, Howard, Prattsburgh, and Wheeler, Steuben County, New York

Visual Assessment Consultation

Attachment D

Viewpoint 102

Location: Intersection of Miller Road and Welch Road, Town of Howard, Steuben County

Coordinates: 42.37559° N, 77.51824° W

Distance Zone: Near Foreground

Landscape Similarity Zone: Rural Upland

Visually Sensitive Resource(s): None Identified



View looking west



View looking north



View looking east

Prattsburgh Wind Farm

Towns of Avoca, Cohocton, Howard, Prattsburgh, and Wheeler, Steuben County, New York

Visual Assessment Consultation

Attachment D

Viewpoint 103

Location: Lander Road, Town of Howard, Steuben County

Coordinates: 42.37466° N, 77.53879° W

Distance Zone: Foreground

Landscape Similarity Zone: Rural Upland

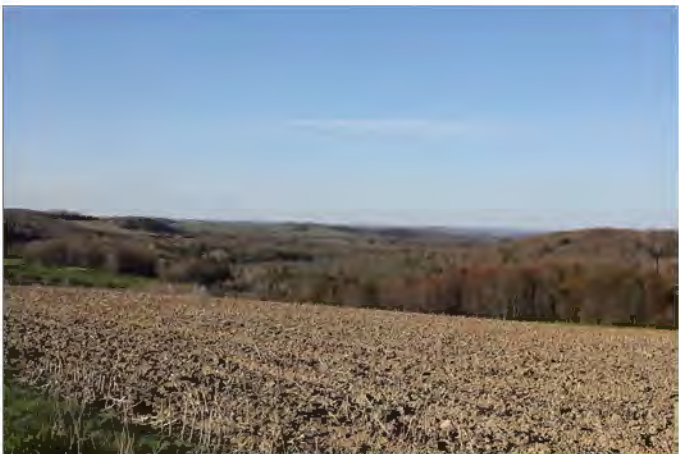
Visually Sensitive Resource(s): None Identified



View looking north



View looking northeast



View looking northeast



View looking east

Prattsburgh Wind Farm

Towns of Avoca, Cohocton, Howard, Prattsburgh, and Wheeler, Steuben County, New York

Visual Assessment Consultation

Attachment D

Viewpoint 104

Location: Camprathbun Road, Town of Howard, Steuben County

Coordinates: 42.34737° N, 77.47558° W

Distance Zone: Middle Ground

Landscape Similarity Zone: Open Water

Visually Sensitive Resource(s): Lake Demons



View looking northwest

Prattsburgh Wind Farm

Towns of Avoca, Cohocton, Howard, Prattsburgh, and Wheeler, Steuben County, New York

Visual Assessment Consultation

Attachment D

Viewpoint 105

Location: Camprathbun Road, Town of Howard, Steuben County

Coordinates: 42.34533° N, 77.47844° W

Distance Zone: Middle Ground

Landscape Similarity Zone: Open Water

Visually Sensitive Resource(s): None Identified



View looking northwest

Prattsburgh Wind Farm

Towns of Avoca, Cohocton, Howard, Prattsburgh, and Wheeler, Steuben County, New York

Visual Assessment Consultation

Attachment D

Viewpoint 106

Location: Turnpike Road, Town of Howard, Steuben County

Coordinates: 42.37559° N, 77.51824° W

Distance Zone: Middle Ground

Landscape Similarity Zone: Rural Upland

Visually Sensitive Resource(s): Finger Lakes Trail, North Country National Scenic Trail

Viewpoint Selected for
Simulation Development



View looking northwest



View looking north



View looking northeast

Prattsburgh Wind Farm

Towns of Avoca, Cohocton, Howard, Prattsburgh, and Wheeler, Steuben County, New York

Visual Assessment Consultation

Attachment D

Viewpoint 107

Location: Palmer Road, Town of Howard, Steuben County

Coordinates: 42.33930° N, 77.54269° W

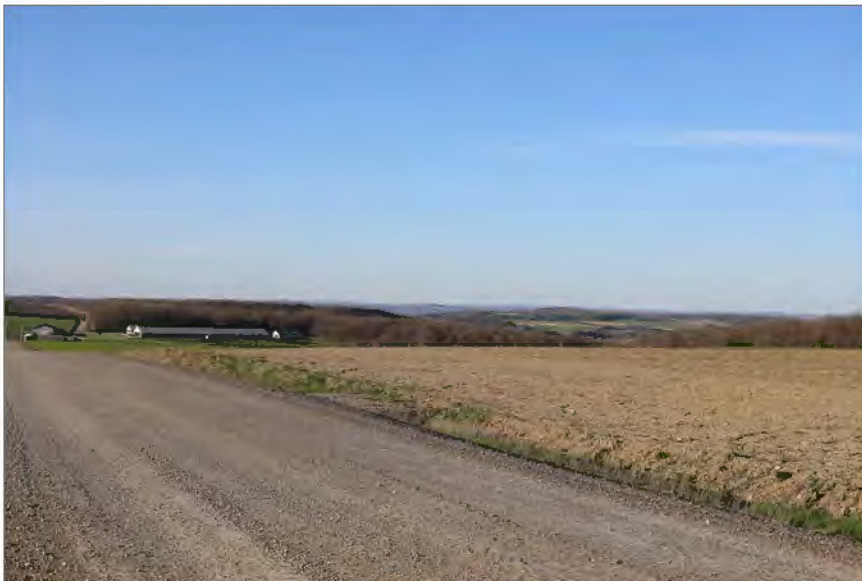
Distance Zone: Middle Ground

Landscape Similarity Zone: Rural Upland

Visually Sensitive Resource(s): None Identified



View looking north



View looking northeast

Prattsburgh Wind Farm

Towns of Avoca, Cohocton, Howard, Prattsburgh, and Wheeler, Steuben County, New York

Visual Assessment Consultation

Attachment D

Viewpoint 108

Location: Spencer Hill Road, Town of Howard, Steuben County

Coordinates: 42.31370° N, 77.55160° W

Distance Zone: Background

Landscape Similarity Zone: Rural Upland

Visually Sensitive Resource(s): Finger Lakes Trail, North Country National Scenic Trail



View looking east



View looking southeast

Prattsburgh Wind Farm

Towns of Avoca, Cohocton, Howard, Prattsburgh, and Wheeler, Steuben County, New York

Visual Assessment Consultation

Attachment D

Viewpoint 109

Location: Dewey Road, Town of Hornellsville, Steuben County

Coordinates: 42.34861° N, 77.62184° W

Distance Zone: Background

Landscape Similarity Zone: Rural Upland

Visually Sensitive Resource(s): None Identified



View looking northeast

Prattsburgh Wind Farm

Towns of Avoca, Cohocton, Howard, Prattsburgh, and Wheeler, Steuben County, New York

Visual Assessment Consultation

Attachment D

Viewpoint 110

Location: Bath National Cemetery, Town of Bath, Steuben County

Coordinates: 42.34963° N, 77.35271° W

Distance Zone: Background

Landscape Similarity Zone: Rural Valley

Visually Sensitive Resource(s): NYS Soldiers & Sailor's Home/Bath VA Center HD

Viewpoint Selected for
Simulation Development



View looking north

Prattsburgh Wind Farm

Towns of Avoca, Cohocton, Howard, Prattsburgh, and Wheeler, Steuben County, New York

Visual Assessment Consultation

Attachment D

Viewpoint 111

Location: Moore Road, Town of Bath, Steuben County

Coordinates: 42.31932° N, 77.35656° W

Distance Zone: Background

Landscape Similarity Zone: Rural Upland

Visually Sensitive Resource(s): None Identified



View looking northwest



View looking northwest



View looking north

Prattsburgh Wind Farm

Towns of Avoca, Cohocton, Howard, Prattsburgh, and Wheeler, Steuben County, New York

Visual Assessment Consultation

Attachment D

Viewpoint 112

Location: Moore Road, Town of Bath, Steuben County

Coordinates: 42.31936° N, 77.35653° W

Distance Zone: Background

Landscape Similarity Zone: Rural Upland

Visually Sensitive Resource(s): None Identified



View looking northwest



View looking north

Prattsburgh Wind Farm

Towns of Avoca, Cohocton, Howard, Prattsburgh, and Wheeler, Steuben County, New York

Visual Assessment Consultation

Attachment D

Viewpoint 113

Location: Mossy Bank Park Scenic Overlook, Town of Bath, Steuben County

Coordinates: 42.32279° N, 77.31392° W

Distance Zone: Background

Landscape Similarity Zone: City/Village

Visually Sensitive Resource(s): Mossy Bank Park

Viewpoint Selected for
Simulation Development



View looking northwest



View looking northwest



View looking north



View looking northeast

Prattsburgh Wind Farm

Towns of Avoca, Cohocton, Howard, Prattsburgh, and Wheeler, Steuben County, New York

Visual Assessment Consultation

Attachment D

Viewpoint 114

Location: Oak Hill Road, Town of Canisteo, Steuben County

Coordinates: 42.27196° N, 77.46763° W

Distance Zone: Background

Landscape Similarity Zone: Rural Upland

Visually Sensitive Resource(s): None Identified



View looking north



View looking northeast

Prattsburgh Wind Farm

Towns of Avoca, Cohocton, Howard, Prattsburgh, and Wheeler, Steuben County, New York

Visual Assessment Consultation

Attachment D

Viewpoint 115

Location: Stonehouse Road, Town of Cameron, Steuben County

Coordinates: 42.25417° N, 77.42008° W

Distance Zone: Background

Landscape Similarity Zone: Rural Upland

Visually Sensitive Resource(s): Cameron State Forest



View looking north

Prattsburgh Wind Farm

Towns of Avoca, Cohocton, Howard, Prattsburgh, and Wheeler, Steuben County, New York

Visual Assessment Consultation

Attachment D