

keep



OUR STORY IS VERY SIMPLE

After producing glass for top designers, KEEP was launched with the intention of bringing a new and unique offering of lighting to the marketplace.

Launched in late 2015 by partners Susan Spiranovich + Adam Holtzinger, KEEP hand-blown glass lighting utilizes traditional Italian glassmaking techniques to create contemporary lighting with exquisite craftsmanship and signature glass patterning.

KEEP is dedicated to maintaining the craft of glass blowing, producing objects with a current sensibility.

KEEP IS HAND BLOWN IN BROOKLYN, LED BY A MAN WITH SERIOUS SKILLS

Those skills belong to Adam Holtzinger. Adam's dedication to the craft of glassblowing is apparent through his passion and love for all things glass, more than 15 years of rigorous practice and his impressive list of clients in the art and design worlds.

Adam has produced work for prestigious designers, architects, artists and museums and continues to teach and demonstrate around the globe.



212_271_0080

KEEPBROOKLYN.COM

 @KEEPBROOKLYN



LIKE A RAINBOW IN THE DARK

Inspired by mid-century design, the POKE Pendant is our solution for a colorful accent piece suitable for any space.

We've chosen interesting neutrals and rich jewel tones for dramatic pops of color.

Six color options are available to mix and match or go monochromatic.

Each POKE Pendant is indented or "poked" by hand, making each piece truly unique.



ITEM

POKE Pendant

ITEM NUMBER

PP01

YEAR OF DESIGN

2014, Susan Spiranovich + Adam Holtzinger

DIMENSIONS + WEIGHT

9" Diameter, 3lbs. with hardware

MATERIALS

Hand-blown from partially recycled glass

REQUIRED ASSEMBLY

Licensed electrician needed to install

UL CERTIFICATION

Upon request, additional fee applies

RETAIL PRICE

985

STANDARD LEAD TIME

6 – 8 weeks from time of deposit
Custom + large order lead times, TBD

PAYMENT TERMS

50% down, 50% due at delivery

CUSTOM OPTIONS

Please inquire
Custom fee applies

SHIPPING LOGISTICS

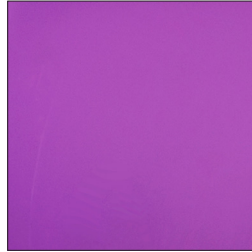
Buyer assumes shipping fees
Shipped UPS unless otherwise stated

ITEM SHIPS FROM

Brooklyn, NY 11217

GLASS COLOR

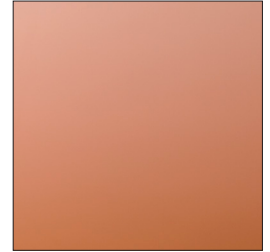
Amethyst



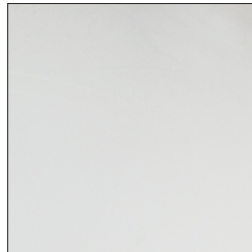
Aquamarine



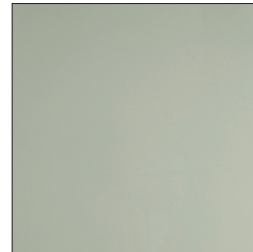
Citrine



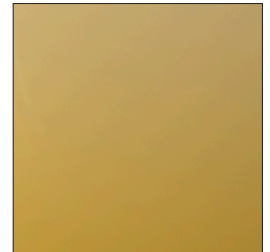
Opal



Slate



Topaz



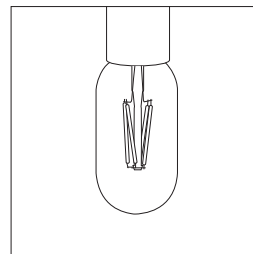
CLOTH COVERED CORD COLORS

4' Onyx or 4' Steel

BRASS ROD option also available
Please inquire for additional pricing



BULB



3.6w dimmable LED tube included
(35w incandescent equivalent)
Up to 30,000 life hours

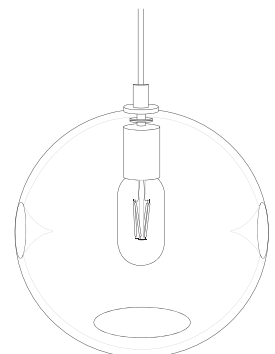
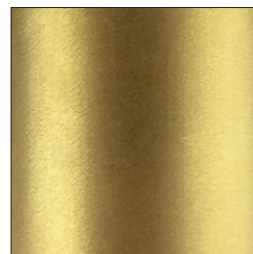
350 lumens, 2700K warm light
120 volt, E26 Medium Base
T14, 1.74" dia. x 4.35" total height

HARDWARE

5" x 1" Matching canopy included
Hand-finished blackened brass



Hand-finished satin brass



keep

POKE PENDANTS



POKE PENDANT Aquamarine detail



[turn over for more images]



POKE Amethyst, hand-finished blackened brass hardware



POKE Aquamarine, hand-finished blackened brass hardware



POKE Citrine, hand-finished blackened brass hardware



POKE Opal, hand-finished blackened brass hardware



POKE Slate, hand-finished satin brass hardware



POKE Topaz, hand-finished satin brass hardware

