

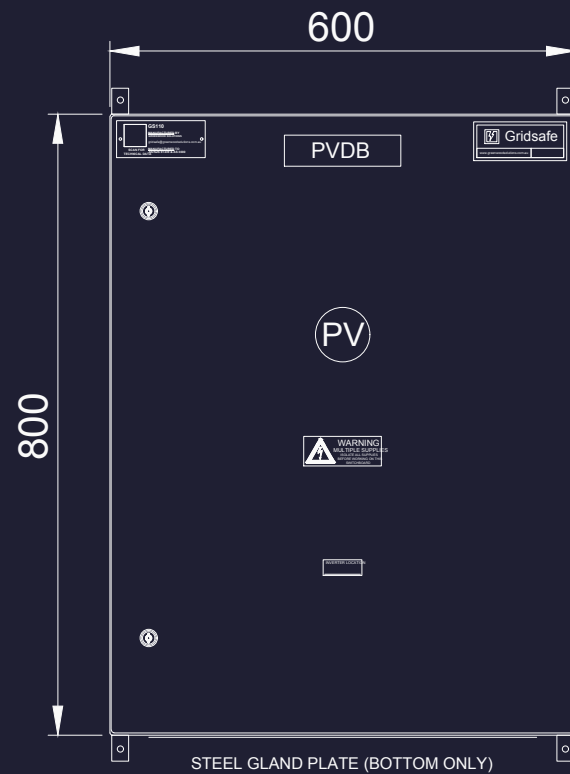


GS110+ Network Protection Board Data Sheet

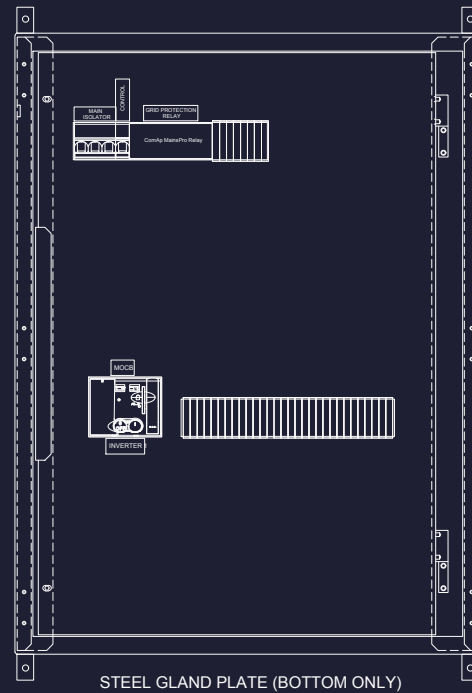
By installers for installers. The GS110+ is a tried and true network protection product that's ready to go whenever you are. Mount, connect your cables, set and forget.

SUITABLE FOR 110KVA SYSTEMS	
IP RATING	IP65
MAIN CIRCUIT BREAKER	200A
FAULT RATING	25KA
MATERIAL	MILD STEEL
CIRCUIT BREAKER CAPACITY	4 x MCB (NOT INCLUDED)
RELAY	COMAP MAINSPRO
SETTINGS	AS4777
PV LABEL KIT	INCLUDED
EASY FIXING TABS	INCLUDED
DIMENSIONS	800 X 600 X 250, 45KG
CABLE ENTRY / EXIT	BOTTOM
WARRANTY	12 MONTHS

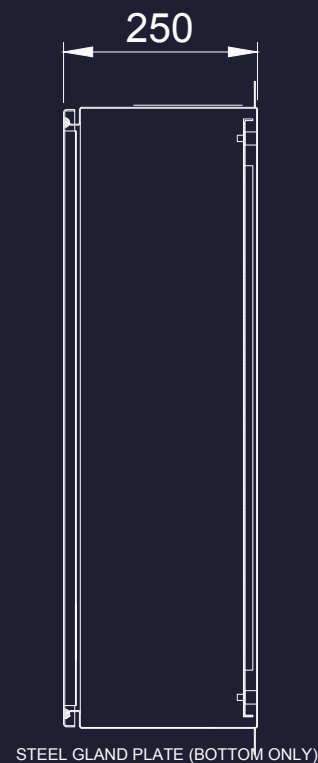




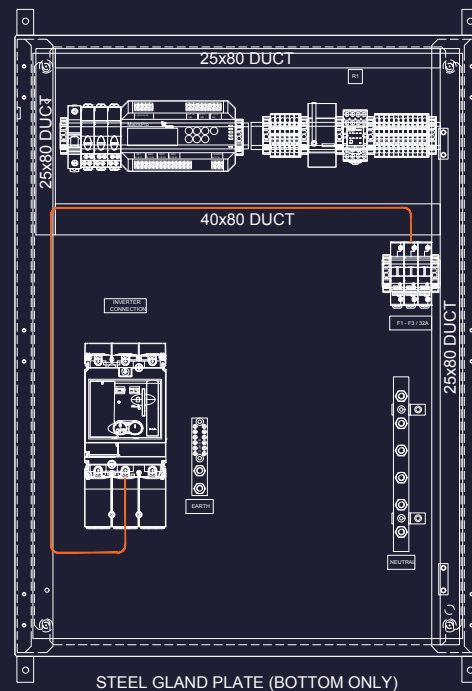
FRONT ELEVATION



FRONT ELEVATION
FRONT DOOR NOT SHOWN

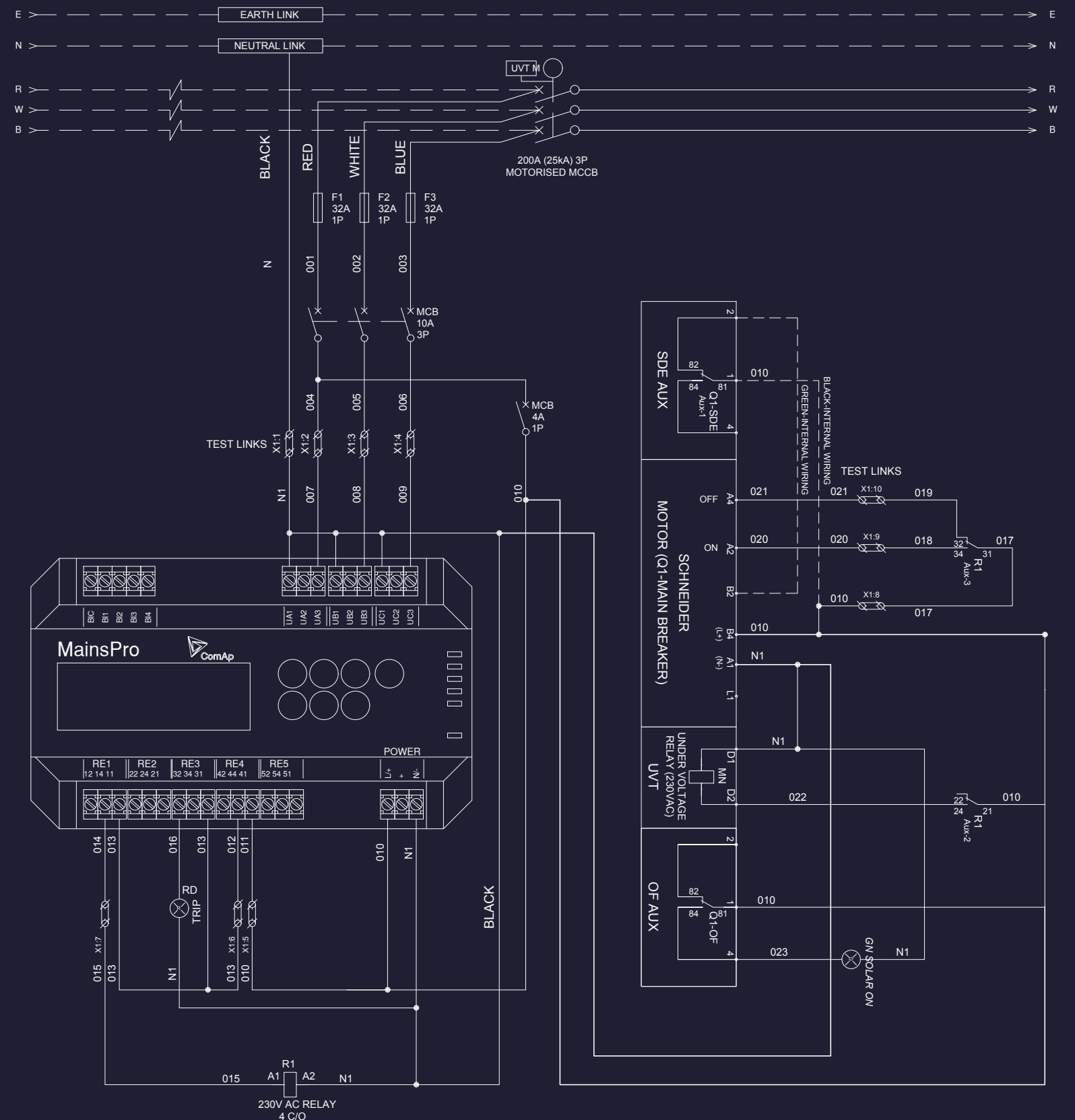


SIDE VIEW



FRONT ELEVATION
FRONT DOOR & ESCUTCHEON NOT SHOWN

LINE SIDE (GRID)



GRIDSAFE STANDARD PRODUCT WARRANTY

This limited warranty (“**Warranty**”) is given by **Greenwood Solutions Pty Ltd (“Greenwood”)** (ABN 21 609 772 385) only to the end-user/retail purchaser (referred to in this warranty as “**Original Purchaser**”, “**You**”, or “**Your**”).

Our goods come with guarantees that cannot be excluded under the Australian Consumer Law. The Original Purchaser is entitled to a replacement or refund for a major failure for the GridSafe product/s (“**the Product**”). The Original Purchaser is also entitled to have the goods repaired or replaced if the goods fail to be of acceptable quality and the failure does not amount to a major failure.

1. Coverage

This Warranty applies to Greenwood’s GridSafe network protection boards purchased from Greenwood or via an authorised 3rd party distributor.

2. Scope

Greenwood warrants that the workmanship and materials used will be free from defects for the Warranty Period.

3. Rectification

In the event of any of the works or materials supplied by us suffering an electrical or mechanical failure or fault within the warranty period we will at our discretion either repair the fault, supply the services and materials again or pay for all parts, labour and service call out fees required for the works and materials to be repaired to normal working order subject to the following terms and conditions.

4. Period

Subject to the terms and conditions laid out in this warranty, Greenwood warrants performance of GridSafe products for 12 months from the Commencement Date (“**Warranty Period**”).

5. Commencement date

The applicable warranty period (12 months) commences on the date that the product is delivered to your nominated delivery address, or from the date of practical completion on all works and materials supplied by us in accordance with this warranty. Where no proof of delivery is available, the applicable warranty period will commence from the date the goods are dispatched to your nominated registered electrical contractor (REC) installer.

6. What is not covered

This warranty does not extend to:

- Perishable or consumable parts;
- Parts not supplied by Greenwood;
- Cosmetic damage which does not affect the intended function or operation of the board;
- Normal wear & tear

7. When this warranty does not apply

This Warranty does not apply to claims occurring under the following conditions:

- misuse or abuse of the product;
- incorrect operation or not following the operation instructions (as noted in the operating instructions) by the Original Purchaser or third party;
- improper installation;
- installation performed by a party that is not suitably qualified party with a valid electrical works licence
- incorrect or improper maintenance or failure to maintain the product;
- incorrect voltage or non-authorised electrical connections;
- adverse external conditions such as incorrect or fluctuations in electrical voltage;
- thunderstorm activity, acts of God, acts of terrorism, damage caused byvermin, or the like;
- exposure to excessive heat, and, or dust, moisture or dampness;
- exposure to abnormally corrosive conditions;
- alterations or modifications to the product made by the Original Purchaser or a third party;
- damage as a result of accident, liquid, grit, impact or lack of proper care as indicated in the operating instructions;
- damage resulting from rough handling;
- overloaded beyond its specified or recommended capacities;
- damage caused by carrier or shipper;
- transported, installed, inspected, commissioned, operated or maintained negligently or not in accordance with both any applicable local laws and regulations and Greenwood’s instructions or recommended procedures;
- used other than for the purpose for which it was designed;
- if any serial number or appliance plate on the product has been tampered with, removed or defaced.

8. Liability

Greenwood does not accept any liability for any direct or consequential damage, loss or other damages arising from conditions under Section 7.

9. Transferability

This warranty is entered into with the Original Purchaser only and is not transferable to another party.

10. Making a claim

You must claim under this Warranty by notifying us of a claim in writing within the Warranty Period. No claims under this warranty will be accepted after the end of the Warranty Period.

11. Contact details for claims

Our contact details for making a claim:
Business address: 12c Hoddle St, Abbotsford VIC 3067
Mail address: As above
Phone: 03 9131 9807
Email: info@greenwoodsolutions.com.au

GRIDSAFE STANDARD PRODUCT DISCLAIMER

This product offering is purpose built and is not designed to be modified in any way.

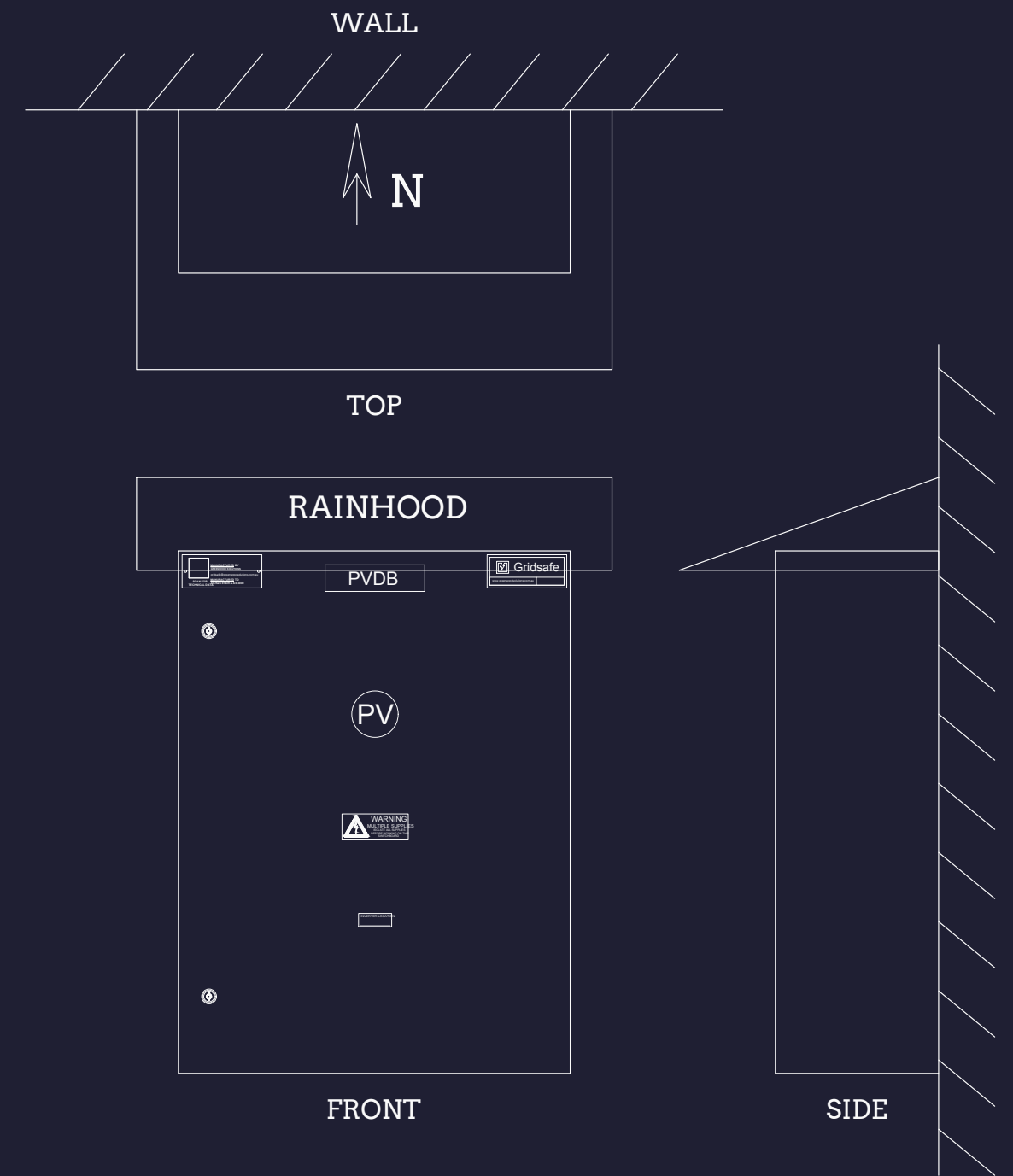
In addition, its installation must follow sound and proven methodologies. Otherwise the standard product warranty contained is voided.

This product is programmed to AS4777.2020 settings. At times the pre-programmed settings may need to be changed to meet local DNSP requirements. Changing such settings is at the installer's risk. Greenwood does not take responsibility for programming error and as this is a standardised product – we do not offer over the phone support and suggest reviewing the product manual or the relay manual should issues arise.

The installation principles to be adhered to are as follows, should the product be installed outside:

- The product should not be installed in direct sunlight. For example a north, west or east location.
- The product should not be exposed to the weather, or steps should be taken to minimise such effects. For example:
 - Rain hood
 - PVDB stand with back, side and top shields

Please refer to the outdoor installation illustration for a south facing outdoor installation example.



OUTDOOR Installation