

RETAIN THIS INFORMATION FOR YOUR
RECORDS

Serial No.:

Make:

Model:

Color:

Registration No.:

CRIME PREVENTION



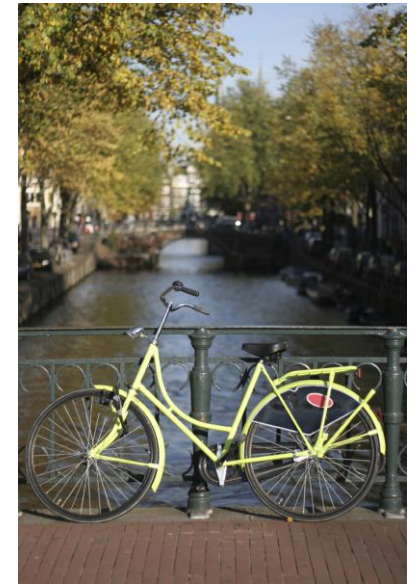
EMERGENCY
9-1-1

City of Kimball
Police Department
Non-Emergency
Phone: (308) 235-3608
Fax: (308) 235-2002
223 S. Chestnut St.
Kimball, NE 69145
www.kimballne.org

For more information regarding
Bicycle Registration and Theft
Prevention: please contact the City
of Kimball or the City of Kimball
Police Department.



City of Kimball
Bicycle
Registration &
Theft Prevention



Protect your Bicycle

BICYCLE THEFT

Thefts of bicycles can be reduced if owners acknowledge the need for adequate security, and invest in equipment that will be effective.



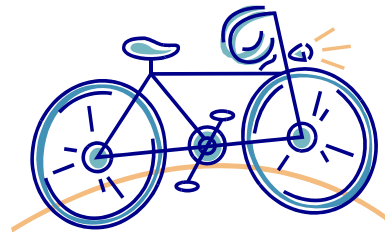
PROTECT YOUR BICYCLE

- Register your bicycle with the City of Kimball
- Use a good quality locking device such as a hardened steel “U” shaped lock, or a hardened steel chain and padlock.
- Lock your bicycle and both wheels to an immovable object which cannot be cut or broken.

Weak, inexpensive locks will not deter a proficient thief.

IDENTIFICATION OF YOUR BICYCLE

Manufacturers mark most bicycles with a serial number. If yours does not have a serial number, engrave an identifying number on the frame. You may wish to put the same number on the wheels and other components.



To prevent the loss of accessories such as lights and bags, etc., they should be detached and taken with you when the bicycle is left unattended.

REGISTER YOUR BICYCLE

Registering your bicycle will greatly assist in its recovery if stolen.

Two methods of registration:

1. On-line registration at www.kimballne.org
2. Fill out the attached registration form and return it to the City of Kimball, 223 S. Chestnut St., Kimball, NE 69145.

PROTECT YOURSELF

Before riding your bicycle, take steps to protect yourself from injury.

Wear an approved bicycle safety helmet.

Use proper lights and reflectors.

Follow all of the safety rules.