



Color Box

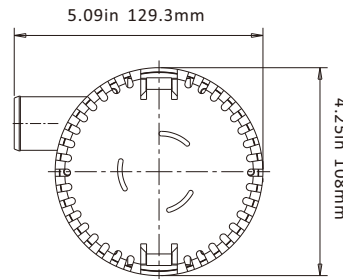
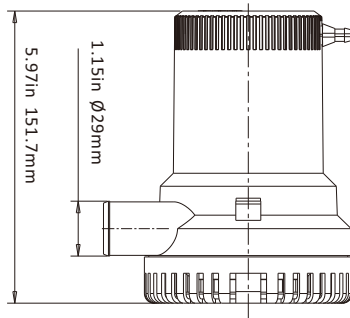
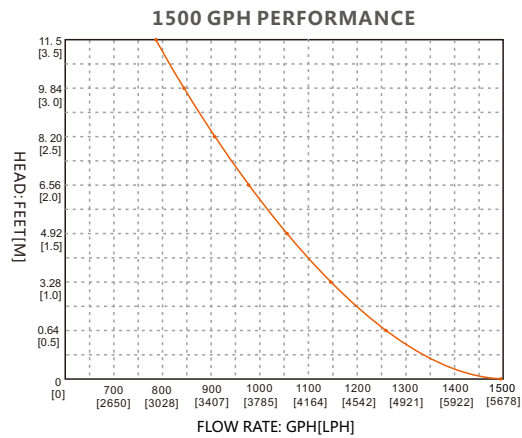


Blister

## NON - AUTOMATIC BILGE PUMPS 01 SERIES 1500/2000 GPH

### FEATURES

- CE, RoHS, ISO 8846, ISO 8849 standards
- Traditional operation by switch or float switch
- Entirely Submersible
- Run dry capable for workloads
- Quiet operation
- Stainless steel shaft
- Snap-off strainer base for easy maintenance
- Pump and switch are stand alone products
- Sealed efficient, long life motors
- Anti-Airlock protection
- Exclusive moisture tight seals
- Marine grade blocked wiring



### STANDARD PUMP CONFIGURATIONS

Model	Flowrate	Volts	Current	Head	Wire lead	Outlet Dia.	N.W./G.W.
SFBP1-G1500-01	1500 GPH	12V	8.0A	5 m/16'	1 m/3'	29 mm/1-1/8"	1.13/1.21 kg
SFBP2-G1500-01	1500 GPH	24V	4.0A	5 m/16'	1 m/3'	29 mm/1-1/8"	1.13/1.21 kg
SFBP1-G2000-01	2000 GPH	12V	8.5A	6 m/19'	1 m/3'	29 mm/1-1/8"	1.13/1.21 kg
SFBP2-G2000-01	2000 GPH	24V	5.0A	6 m/19'	1 m/3'	29 mm/1-1/8"	1.13/1.21 kg